

FHWA REGION NO.	STATE	PROJECT NUMBER	FISCAL YEAR	SHEET NUMBER	TOTAL SHEETS
7	KANSAS	87N-0080-01	1997	19	162

BY	DATE

REFERENCES NOTED	REFERENCES CHECKED

STATION 0+910.129, 4 669 LT., CONSTRUCT MANHOLE (TYPE P) (1.220 m DIA.). INSTALL 450 mm x 20.139 m STORM SEWER (RCP) (E.). INSTALL 450 mm x 81.614 m STORM SEWER (RCP) (N.). SEE SHEETS 20, 37, 66

STATION 0+992.982 LT., CONSTRUCT INLET (TYPE 2F) (CURB) (SPECIAL). INSTALL 600 mm x 28.289 m STORM SEWER (RCP) (N.). SEE SHEETS 20, 63

STATION 0+480.158 (THIRD), SAW EXISTING PAVEMENT TO NEAT LINE. REMOVE AND REPLACE BITUMINOUS SURFACE AS NECESSARY (50 mm) (BM-2)

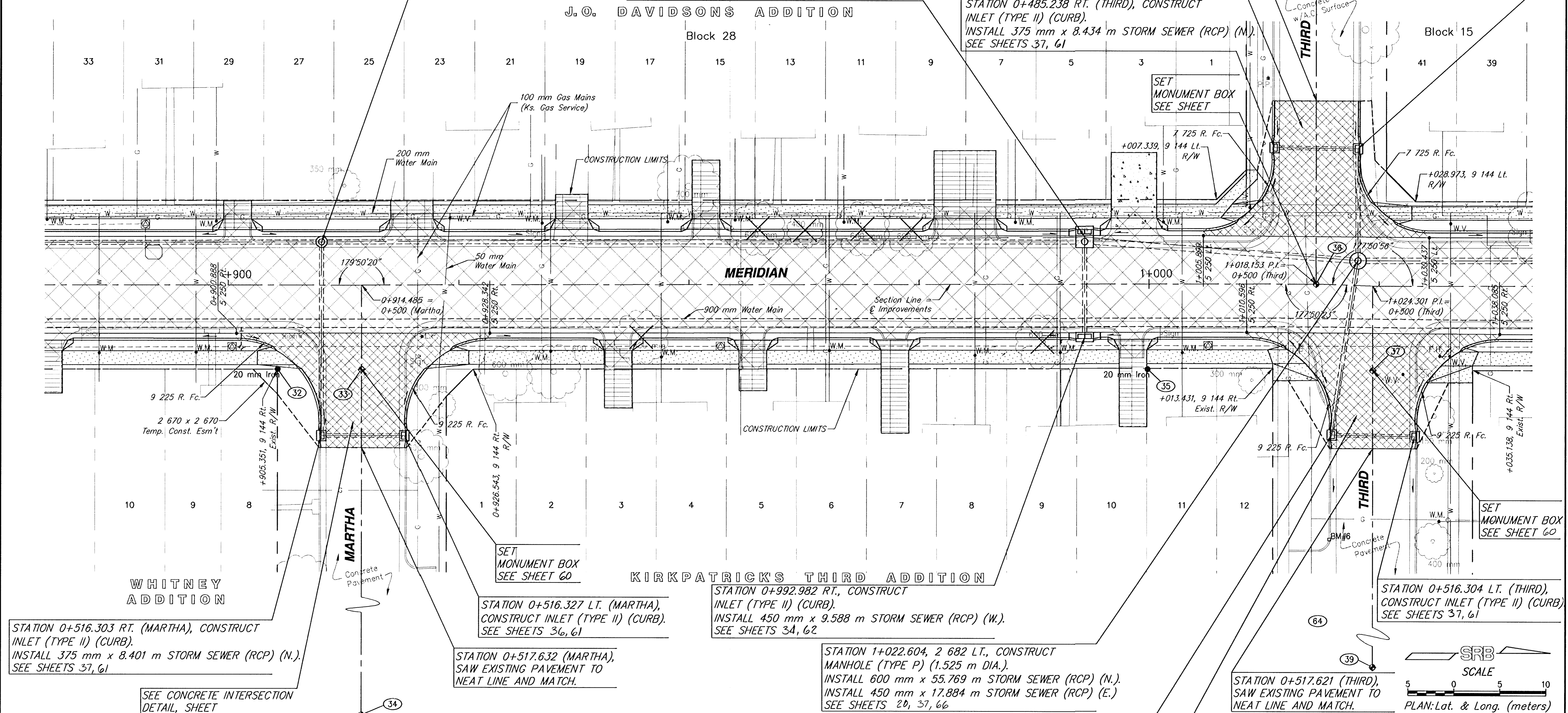
STATION 0+485.353 LT. (THIRD), CONSTRUCT INLET (TYPE II) (CURB). INSTALL 450 mm x 11.007 m STORM SEWER (RCP) (E.). SEE SHEETS

STATION 0+485.238 RT. (THIRD), CONSTRUCT INLET (TYPE II) (CURB). INSTALL 375 mm x 8.434 m STORM SEWER (RCP) (N.). SEE SHEETS 37, 61

SEE CONCRETE INTERSECTION DETAIL, SHEET

SET MONUMENT BOX SEE SHEET

SET MONUMENT BOX SEE SHEET 60



STATION 0+516.303 RT. (MARTHA), CONSTRUCT INLET (TYPE II) (CURB). INSTALL 375 mm x 8.401 m STORM SEWER (RCP) (N.). SEE SHEETS 37, 61

SEE CONCRETE INTERSECTION DETAIL, SHEET

STATION 0+516.327 LT. (MARTHA), CONSTRUCT INLET (TYPE II) (CURB). SEE SHEETS 36, 61

STATION 0+517.632 (MARTHA), SAW EXISTING PAVEMENT TO NEAT LINE AND MATCH.

STATION 0+992.982 RT., CONSTRUCT INLET (TYPE II) (CURB). INSTALL 450 mm x 9.588 m STORM SEWER (RCP) (W.). SEE SHEETS 34, 62

STATION 1+022.604, 2 682 LT., CONSTRUCT MANHOLE (TYPE P) (1.525 m DIA.). INSTALL 600 mm x 55.769 m STORM SEWER (RCP) (N.). INSTALL 450 mm x 17.884 m STORM SEWER (RCP) (E.). SEE SHEETS 20, 37, 66

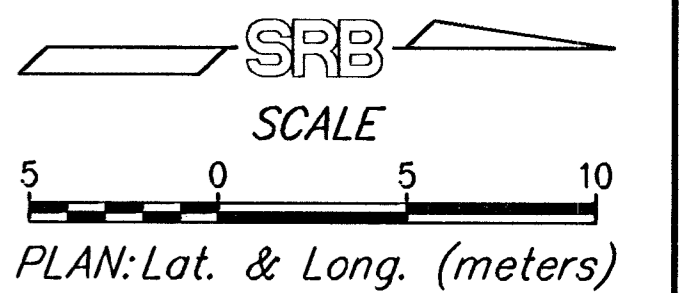
STATION 0+516.143 RT. (THIRD), CONSTRUCT INLET (TYPE II) (CURB). INSTALL 375 mm x 8.386 m STORM SEWER (RCP) (N.). SEE SHEETS 37, 61

SEE CONCRETE INTERSECTION DETAIL, SHEET 42

STATION 0+517.621 (THIRD), SAW EXISTING PAVEMENT TO NEAT LINE AND MATCH.

STATION 0+516.304 LT. (THIRD), CONSTRUCT INLET (TYPE II) (CURB). SEE SHEETS 37, 61

BM #6 "□" CUT IN TOP OF CURB OF WEST RETURN OF FIRST DRIVE EAST OF MERIDIAN ON SOUTH SIDE OF THIRD. ELEV. 397.150



SRB		SAVOY, RUGGLES & BOHM, P.A. ENGINEERING & SURVEYING	
224 NORTH MAIN WICHITA, KANSAS 67203 Tel: 316-264-8008 Fax: 316-264-4821 E-Mail: srbs@srb.com	316-264-8008 316-264-4821 www.srb.com	PROJECT NUMBER 472-76-245-82740-000-000-001	PROJECT TITLE MERIDIAN STATION 0+880 TO STATION 1+035
DRAWN M. Long/TEB	DESIGN T.C.R.	REVIEW JCR	DATE Jan. 8, 1999
UTILITY SRB JOB 5397			SHEET 19 TOTAL 162