

FHWA REGION NO.	STATE	PROJECT NUMBER	FISCAL YEAR	SHEET NUMBER	TOTAL SHEETS
7	KANSAS	87N-0080-01	1997	25	162

BY	DATE

STATION 1+391.500, 2 744 LT., CONSTRUCT MANHOLE (TYPE P) (1.525 m DIA.). INSTALL 900 mm x 18.496 m STORM SEWER (RCP) (N.). SEE SHEETS 26, 66

STATION 1+391.500 LT., CONSTRUCT INLET (TYPE II) (CURB). INSTALL 375 mm x 1.944 m STORM SEWER (RCP) (E.). SEE SHEETS 34, 61

STATION 0+477.051 (NEWELL), BEGIN REGRADE AND RESURFACE (SA-X)

STATION 0+488.197, 2 828 RT. (NEWELL), CONSTRUCT MANHOLE (TYPE P) (1.525 m DIA.) OVER EXISTING 600 mm RCP. SEE SHEETS 39, 61

STATION 1+460.216, END STANDARD PAVEMENT SECTION. SAW EXISTING PAVEMENT TO NEAT LINE AND MATCH WITH NEW OVERLAY SURFACE.

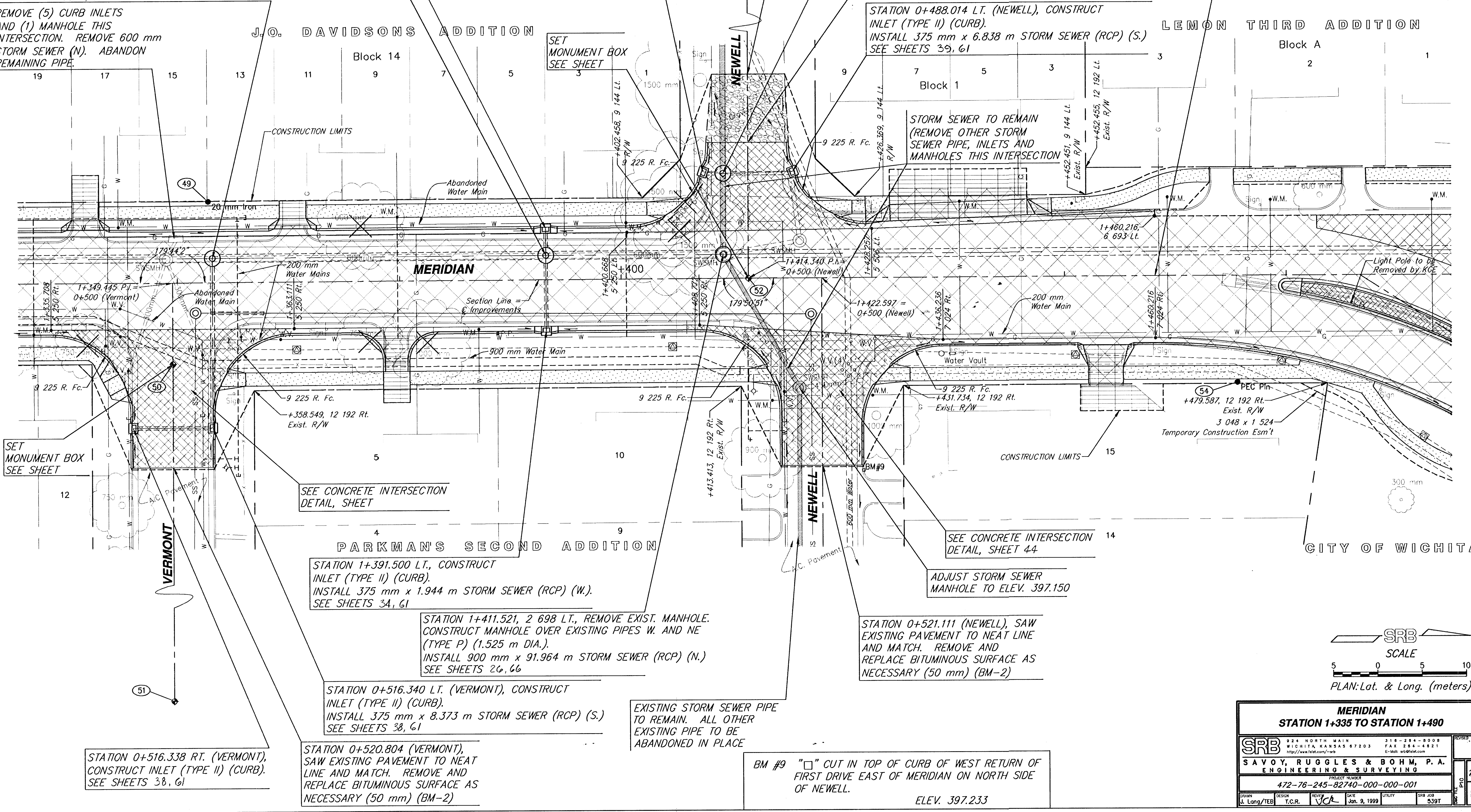
STATION 1+353.949, 2 744 LT., CONSTRUCT MANHOLE (TYPE P) (1.525 m DIA.). INSTALL 450 mm x 17.978 m STORM SEWER (RCP) (E.). INSTALL 900 mm x 36.026 m STORM SEWER (RCP) (N.). SEE SHEETS 26, 37, 66

STATION 0+488.031 RT. (NEWELL), CONSTRUCT INLET (TYPE II) (CURB). INSTALL 375 mm x 1.224 m STORM SEWER (RCP) (N.). SEE SHEETS 39, 61

STATION 0+484.723 (NEWELL), BEGIN PAVEMENT

STATION 0+488.014 LT. (NEWELL), CONSTRUCT INLET (TYPE II) (CURB). INSTALL 375 mm x 6.838 m STORM SEWER (RCP) (S.). SEE SHEETS 39, 61

REMOVE (5) CURB INLETS AND (1) MANHOLE THIS INTERSECTION. REMOVE 600 mm STORM SEWER (N.). ABANDON REMAINING PIPE.



SET MONUMENT BOX SEE SHEET

SEE CONCRETE INTERSECTION DETAIL, SHEET

SEE CONCRETE INTERSECTION DETAIL, SHEET 44

ADJUST STORM SEWER MANHOLE TO ELEV. 397.150

STATION 0+521.111 (NEWELL), SAW EXISTING PAVEMENT TO NEAT LINE AND MATCH. REMOVE AND REPLACE BITUMINOUS SURFACE AS NECESSARY (50 mm) (BM-2)

EXISTING STORM SEWER PIPE TO REMAIN. ALL OTHER EXISTING PIPE TO BE ABANDONED IN PLACE

BM #9 "□" CUT IN TOP OF CURB OF WEST RETURN OF FIRST DRIVE EAST OF MERIDIAN ON NORTH SIDE OF NEWELL. ELEV. 397.233

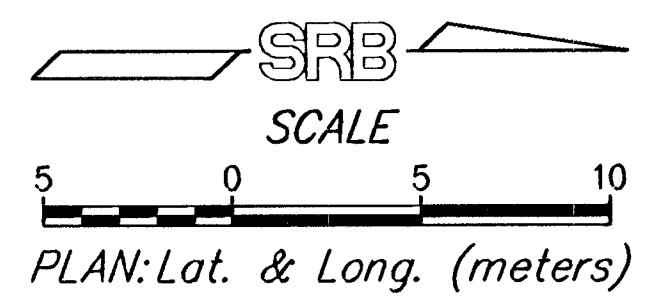
STATION 0+516.338 RT. (VERMONT), CONSTRUCT INLET (TYPE II) (CURB). SEE SHEETS 38, 61

STATION 0+520.804 (VERMONT), SAW EXISTING PAVEMENT TO NEAT LINE AND MATCH. REMOVE AND REPLACE BITUMINOUS SURFACE AS NECESSARY (50 mm) (BM-2)

STATION 1+391.500 LT., CONSTRUCT INLET (TYPE II) (CURB). INSTALL 375 mm x 1.944 m STORM SEWER (RCP) (W.). SEE SHEETS 34, 61

STATION 1+411.521, 2 698 LT., REMOVE EXIST. MANHOLE. CONSTRUCT MANHOLE OVER EXISTING PIPES W. AND NE (TYPE P) (1.525 m DIA.). INSTALL 900 mm x 91.964 m STORM SEWER (RCP) (N.). SEE SHEETS 26, 66

STATION 0+516.340 LT. (VERMONT), CONSTRUCT INLET (TYPE II) (CURB). INSTALL 375 mm x 8.373 m STORM SEWER (RCP) (S.). SEE SHEETS 38, 61



MERIDIAN STATION 1+335 TO STATION 1+490				
SRB 924 NORTH MAIN WICHITA, KANSAS 67203 http://www.srb.com/~srbo		316-284-8008 FAX 316-284-1821 E-Mail: srbo@srbo.com		
SAVOY, RUGGLES & BOHM, P.A. ENGINEERING & SURVEYING				
PROJECT NUMBER 472-76-245-82740-000-000-001				
DRAWN J. Long/TEB	DESIGN T.C.R.	REVIEW VCA	DATE Jan. 9, 1999	UTILITY 539T
				25
				162