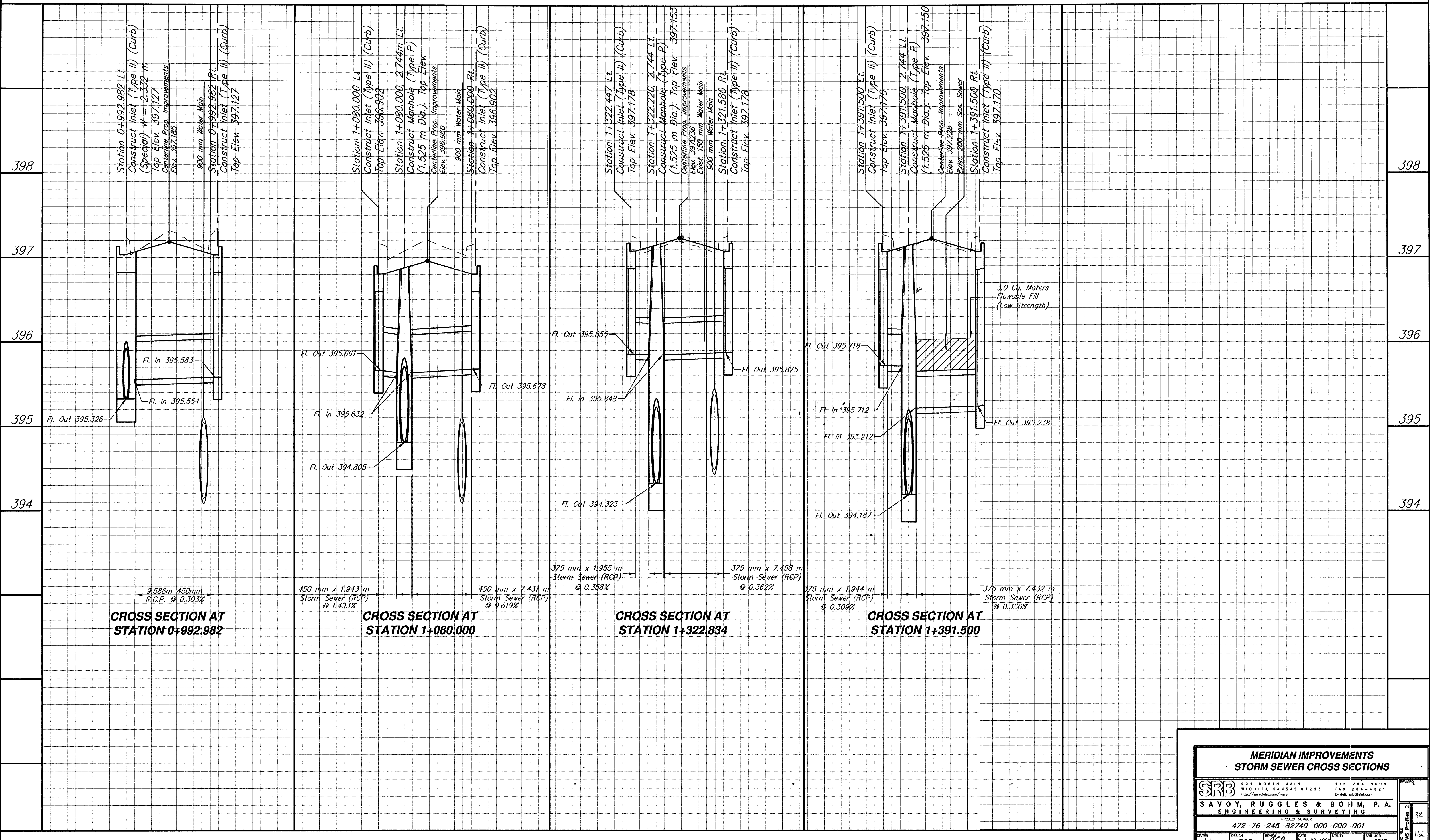


BY	DATE
REFERENCES NOTED	CHECKED



CROSS SECTION AT STATION 0+992.982

CROSS SECTION AT STATION 1+080.000

CROSS SECTION AT STATION 1+322.834

CROSS SECTION AT STATION 1+391.500

**MERIDIAN IMPROVEMENTS
STORM SEWER CROSS SECTIONS**

	924 NORTH MAIN WICHITA, KANSAS 67203 WWW.MERIDIAN-IMP.COM	316-264-8008 FAX 316-264-4821 E-MAIL: info@merid.com	REVISION 34 160
	SAVOY, RUGGLES & BOHM, P.A. ENGINEERING & SURVEYING PROJECT NUMBER 472-76-245-82740-000-001		
DRAWN J. Lang	DESIGN T.C.R.	CHECKED VCR	DATE Sept. 28, 1998