

QUANTITIES:

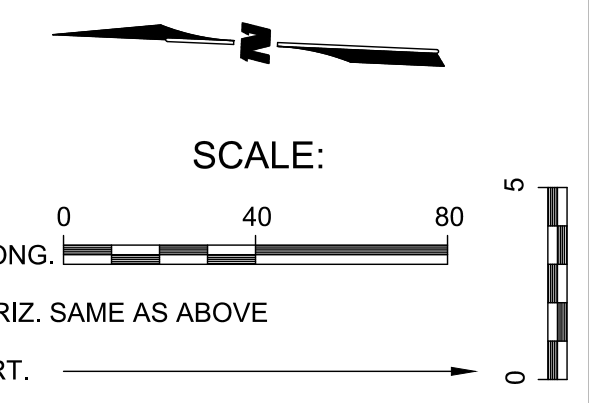
PIPE:
8" C900 PVC - 1,061.2'

VALVES:
8" - 1

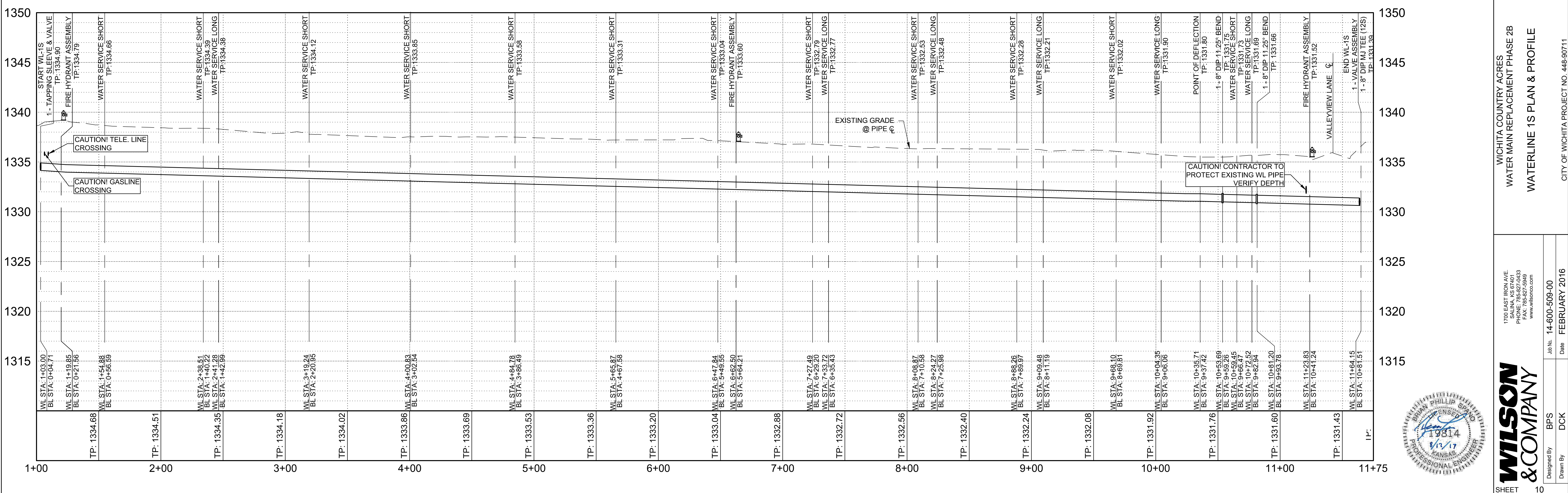
TAPPING SLEEVE & VALVE
12" x 8" - 1

HYDRANT:
NEW - 2
RELOCATED - 1

SERVICES:
LONG - 6
SHORT - 12



WATERLINE 1S



M:\FIS14-600-509-00\CADD\SHEETS\Deliverables 07_2017\SOUTH WL 90711\SOUTH PNP's\146509_PNP_1_2S.dwg 8/17/2017 1:20 PM

WICHITA COUNTRY ACRES
WATER MAIN REPLACEMENT PHASE 2B
WATERLINE 1S PLAN & PROFILE
CITY OF WICHITA PROJECT NO. 448-90711

1700 EAST BORN AVE
SALINA, KS 67401
PHONE: 785-827-0833
FAX: 785-827-0836
WWW.WILSON-AND-COMPANY.COM

WILSON & COMPANY

DESIGNED BY: BPS
DRAWN BY: DCK
JOB NO.: 14-600-509-00
DATE: FEBRUARY 2016

SHEET 10

