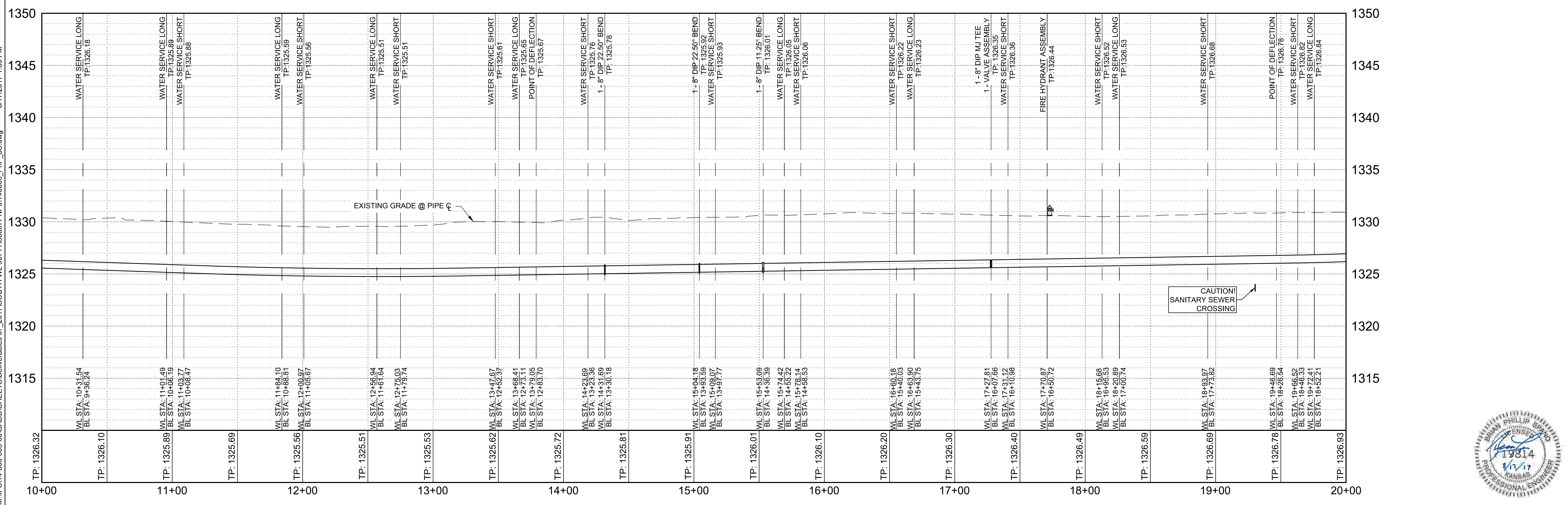
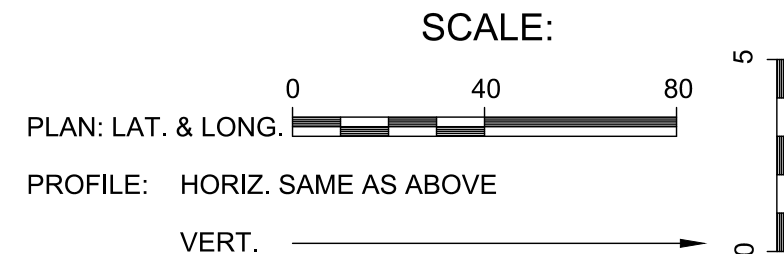
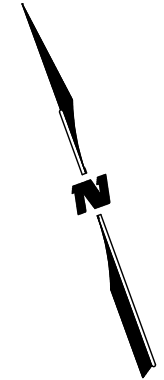


- QUANTITIES:**  
 PIPE:  
 8" C900 PVC - 1,043.7'  
 VALVES:  
 8" - 1  
 HYDRANT:  
 RELOCATED - 1  
 SERVICES:  
 LONG - 9  
 SHORT - 12



WICHITA COUNTRY ACRES  
 WATER MAIN REPLACEMENT PHASE 2B  
 WATERLINE 6S PLAN & PROFILE

1700 EAST BROWN AVE  
 SALINA, KS 67401  
 PHONE: 785-827-0833  
 FAX: 785-827-0836  
 WWW.WILSON-AND-COMPANY.COM

Designed By: BPS  
 Drawn By: DCK  
 Job No.: 14-600-509-00  
 Date: FEBRUARY 2016  
 SHEET 21



M:\IFS\14-600-509-00\CADD\SHEETS\Deliverables\07\_2017\17SOUTH\WL\_90711\South\_PNP\6S.dwg 8/17/2017 1:33 PM