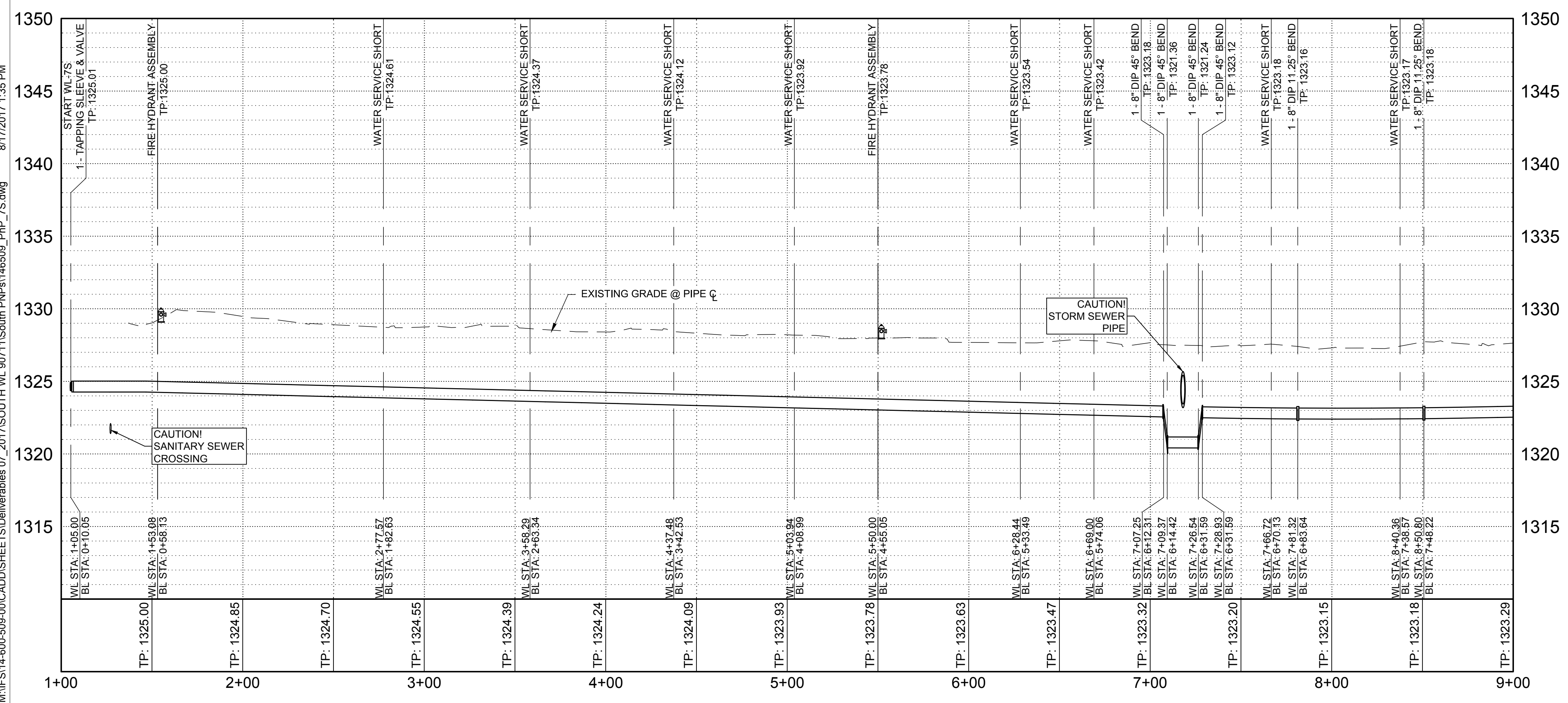
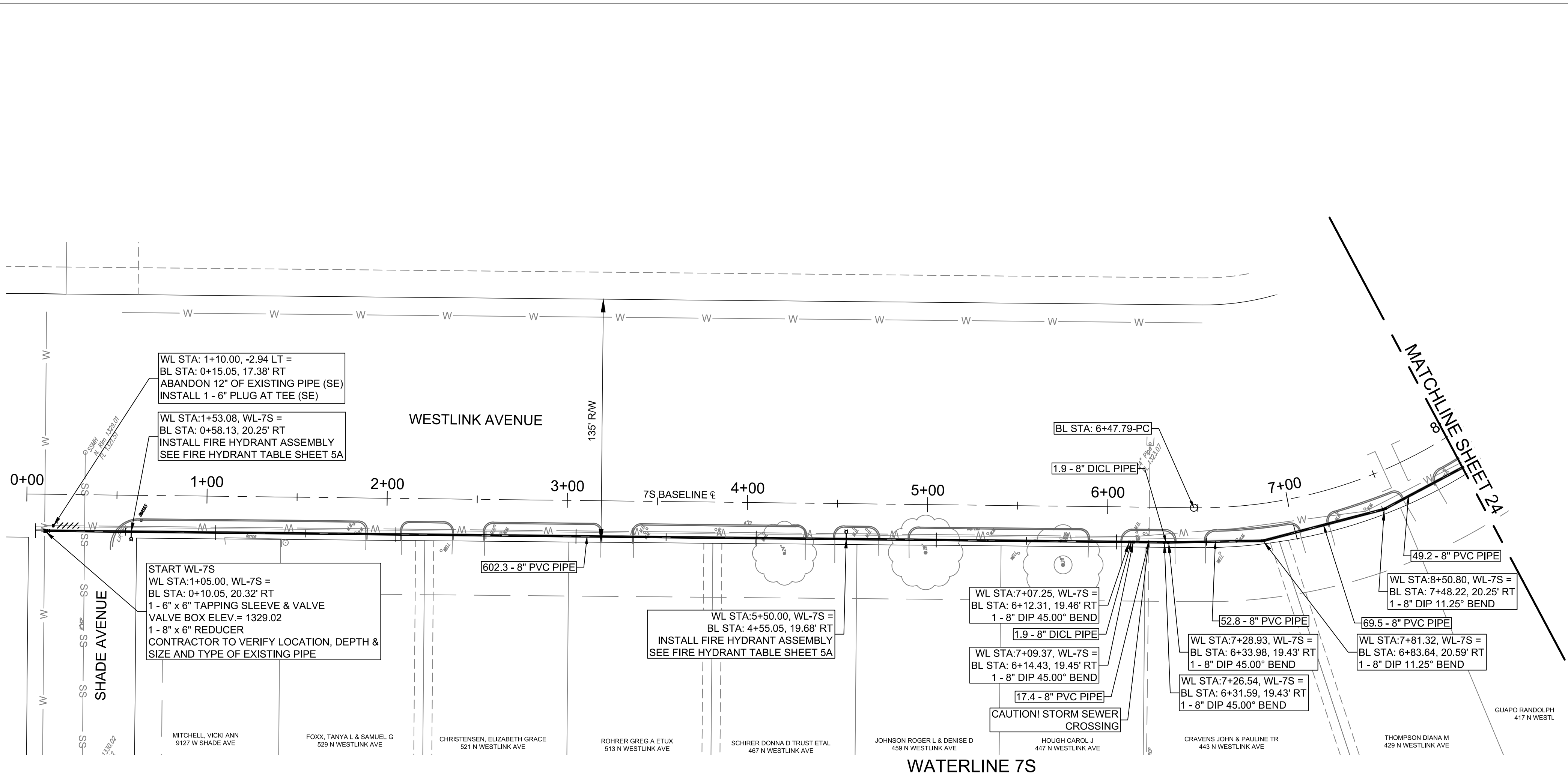
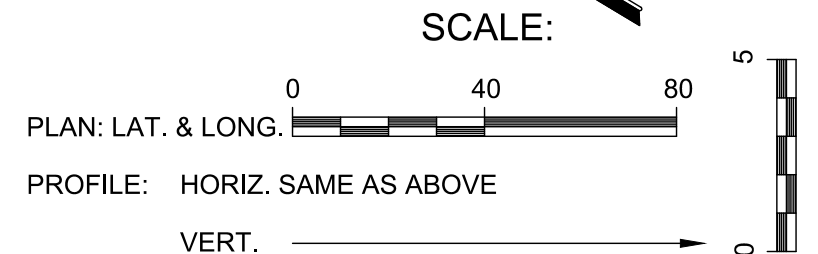


**QUANTITIES:**  
 PIPE:  
 8" C900 PVC - 791.2'  
 8" DICL - 3.8'  
 TAPPING SLEEVE & VALVE  
 6" x 6" - 1  
 HYDRANT:  
 NEW - 2  
 SERVICES:  
 LONG - 0  
 SHORT - 8



M:\FS14-600-509-00\CADD\SHEETS\Deliverables 07\_2017\SOUTH WL 90711\SOUTH PNP's\146509\_PnP\_7S.dwg 8/17/2017 1:35 PM

WICHITA COUNTRY ACRES  
 WATER MAIN REPLACEMENT PHASE 2B  
 WATERLINE 7S PLAN & PROFILE  
 CITY OF WICHITA PROJECT NO. 448-90711

1700 EAST IRON AVE  
 SALINA, KS 67401  
 PHONE: 785-827-0833  
 FAX: 785-827-0838  
 WWW.WILSON-AND-COMPANY.COM

**WILSON & COMPANY**  
 BPS DCK  
 14-600-509-00  
 FEBRUARY 2016

