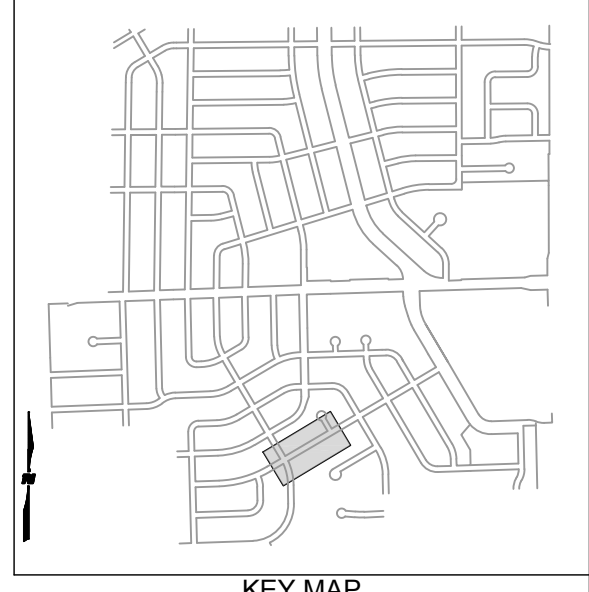
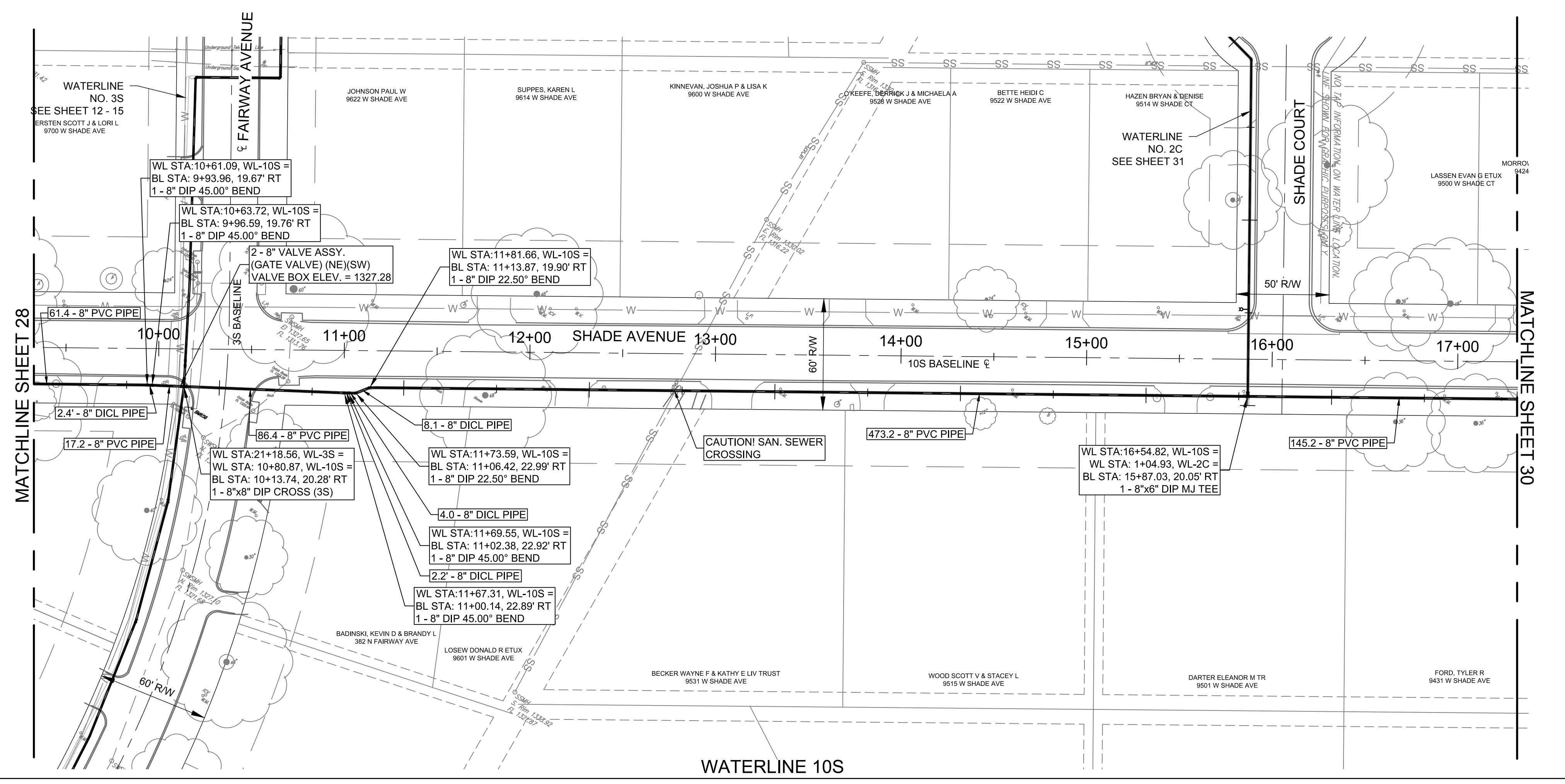
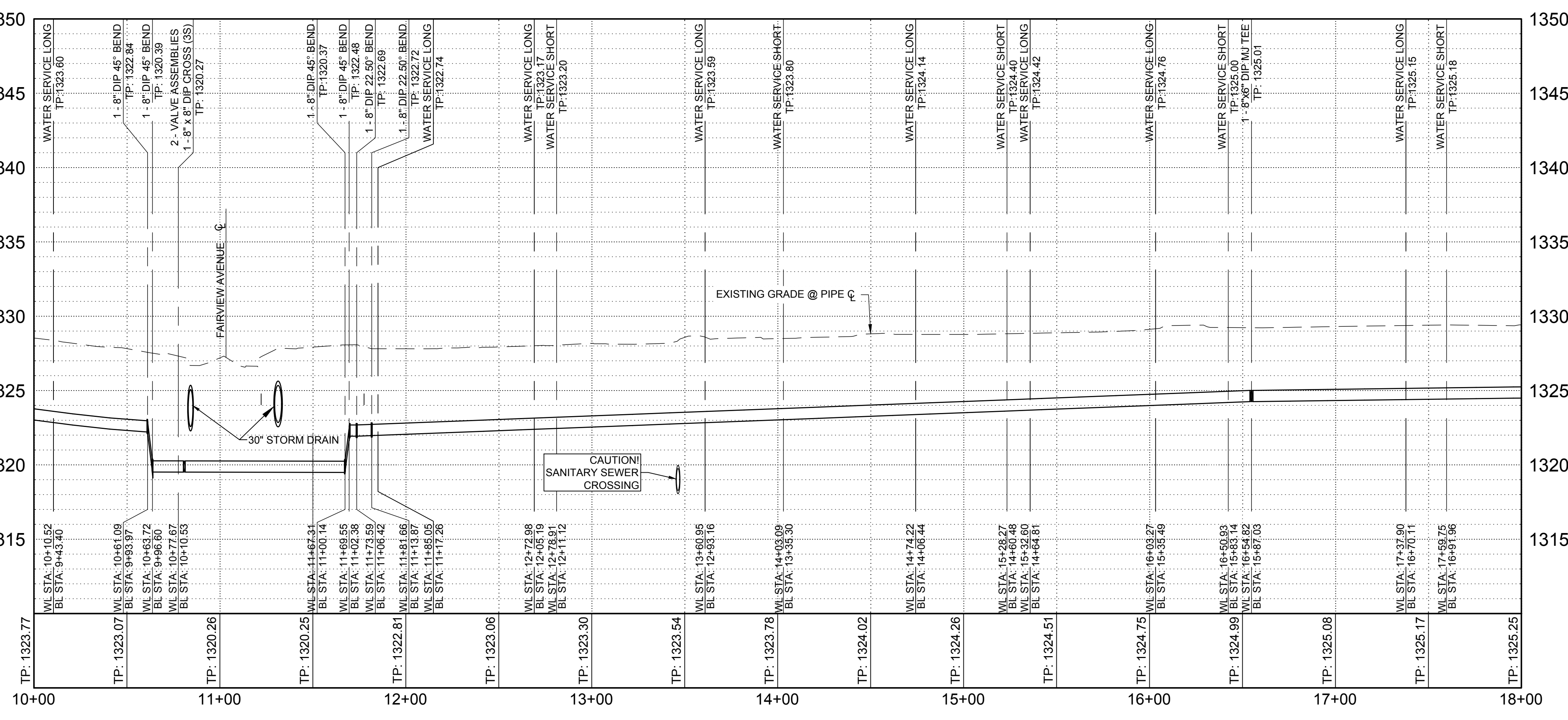
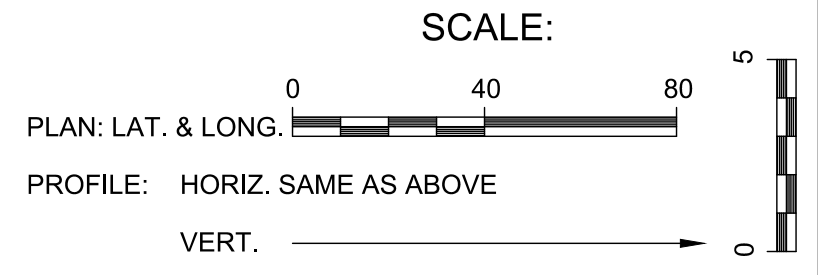
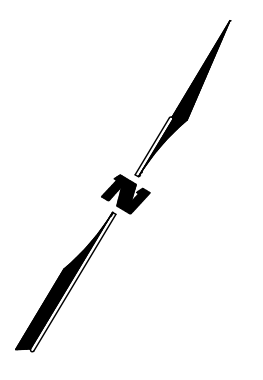


M:\IFS\14-600-509-00\CADD\SHEETS\Deliverables\07_2017\SOUTH\WL_90711\South PNP\146509_PnP_10S.dwg 8/17/2017 1:41 PM



- QUANTITIES:**
PIPE:
 8" C900 PVC - 783.4'
 8" DIP - 16.7'
VALVES:
 8" - 2
HYDRANT:
 NEW - 0
SERVICES:
 LONG - 8
 SHORT - 5



WICHITA COUNTRY ACRES
 WATER MAIN REPLACEMENT PHASE 2B
 WATERLINE 10S PLAN & PROFILE

1700 EAST IRON AVE
 SALINA, KS 67401
 PHONE: 785-827-0833
 FAX: 785-827-0839
 WWW.WILSON-AND-COMPANY.COM

WILSON & COMPANY
 BPS DCK
 FEBRUARY 2016
 SHEET 29

