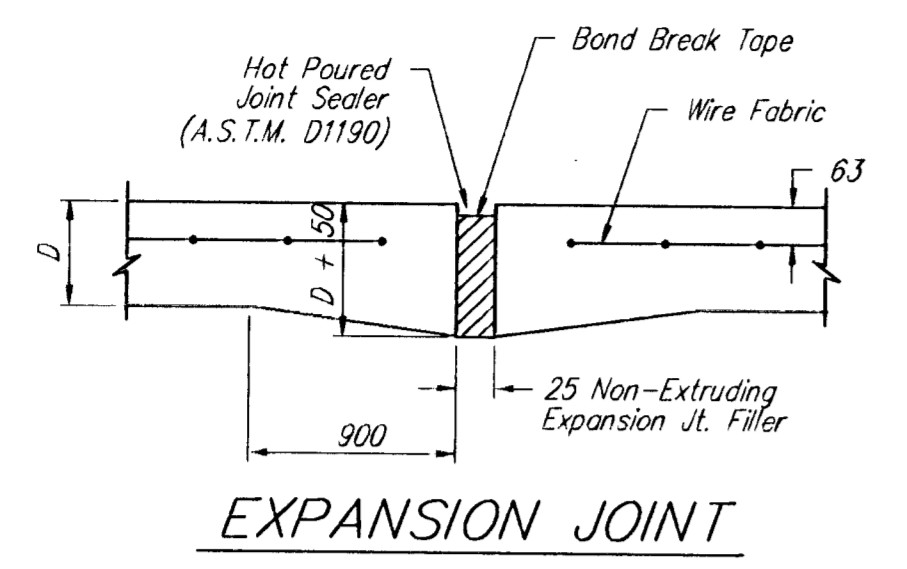


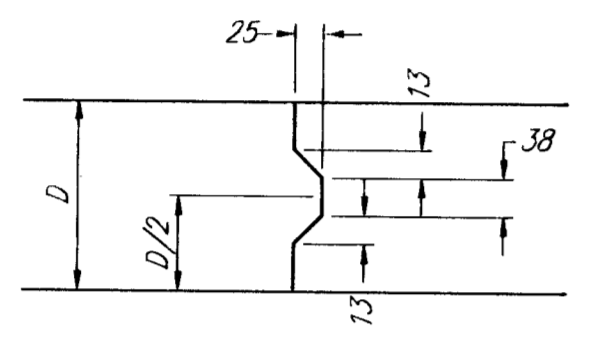
FHWA REGION NO.	STATE	PROJECT NUMBER	FISCAL YEAR	SHEET NUMBER	TOTAL SHEETS
7	KANSAS	87N-0080-01	1997	58	162

BY	DATE
REFERENCES NOTED	REFERENCES CHECKED

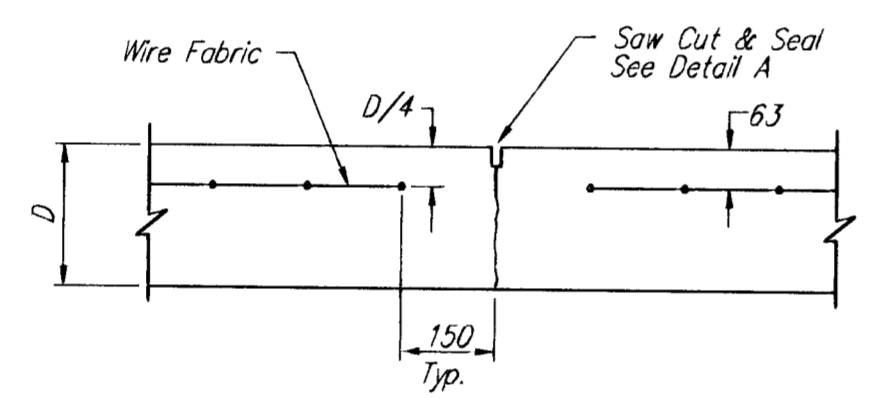


EXPANSION JOINT

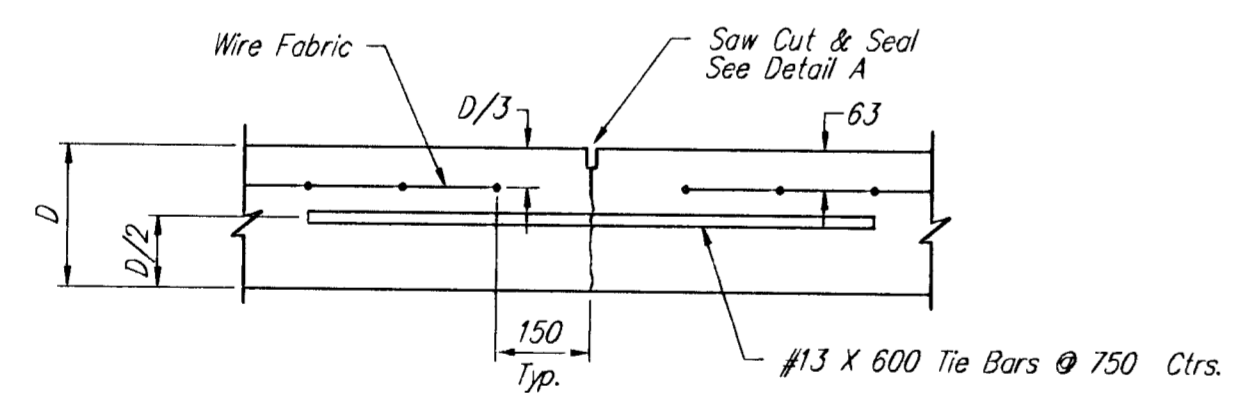
NOTE: Extra Thickness to be Subsidiary to Price of Square Yards Pavement



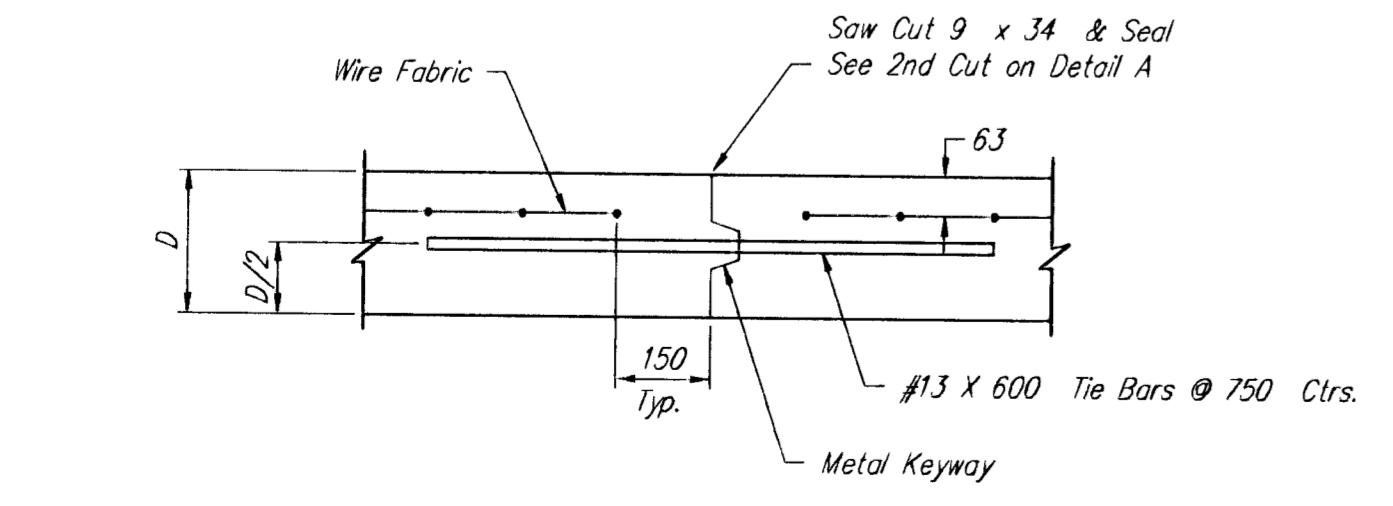
KEYWAY DETAIL



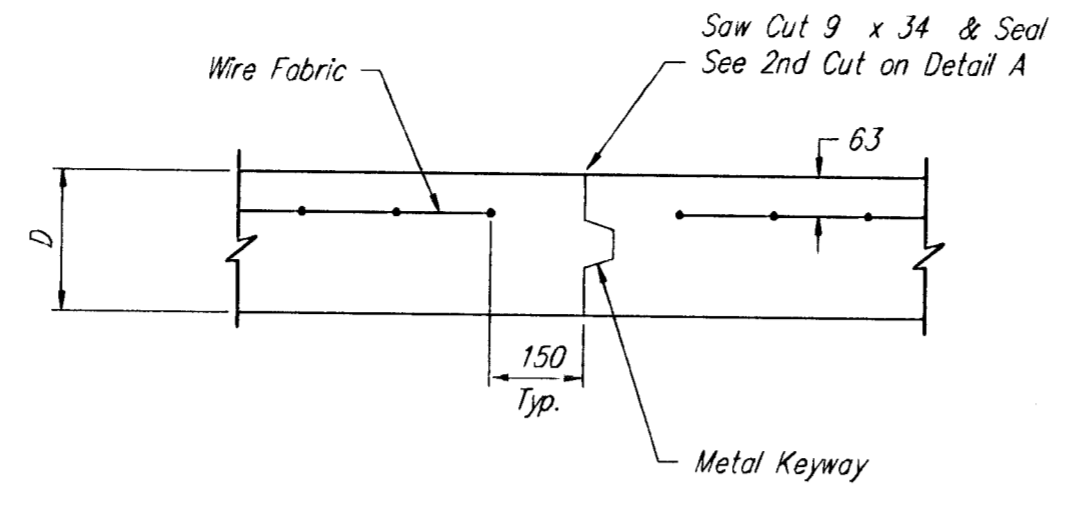
CONTRACTION JOINT DETAIL (C.J.)



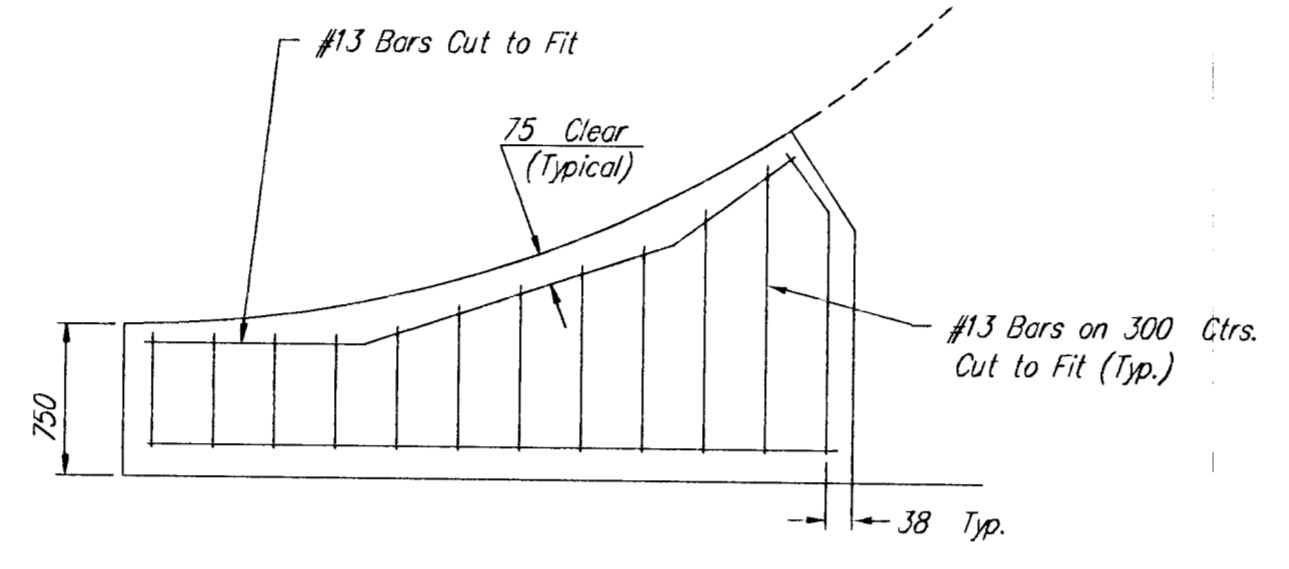
LONGITUDINAL JOINT DETAIL (L.J.)



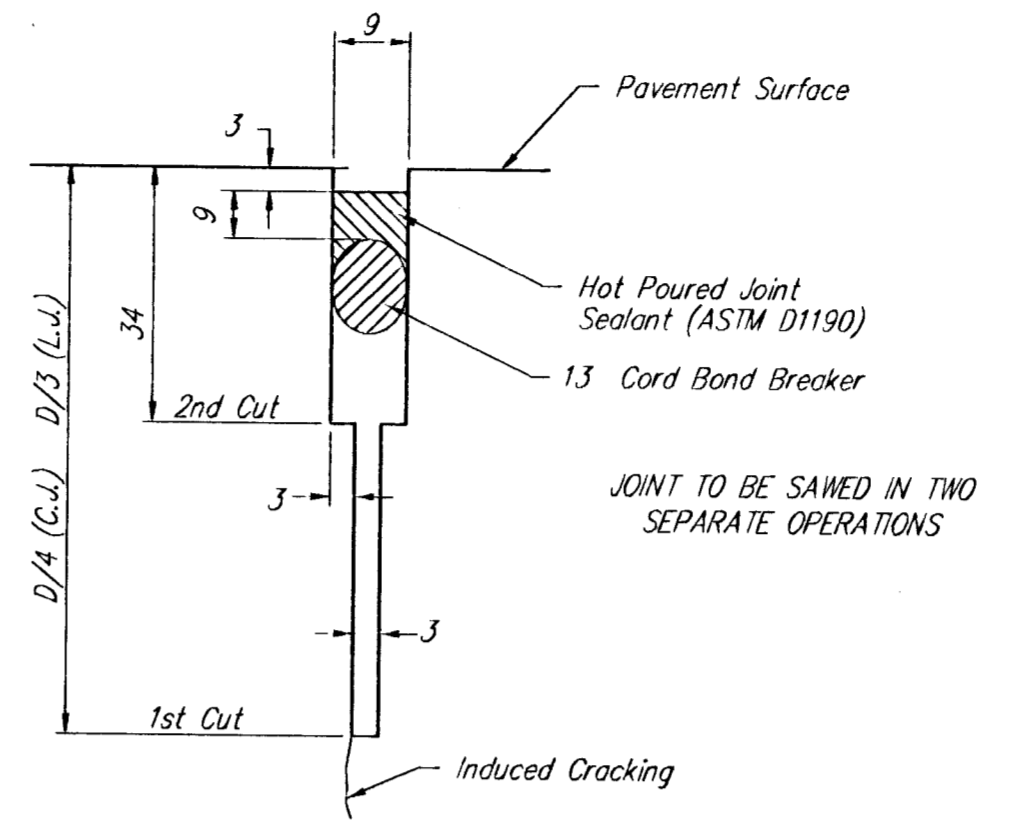
OPTIONAL LONGITUDINAL JOINT DETAIL (L.J.)



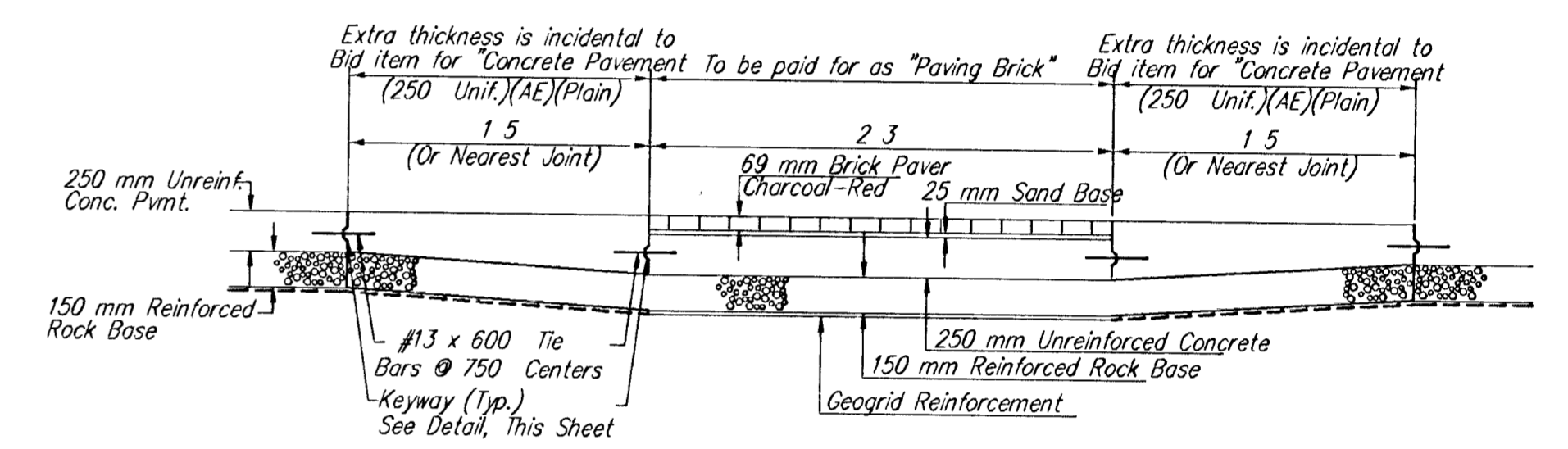
OPTIONAL CONTRACTION JOINT



WING REINFORCING DETAIL

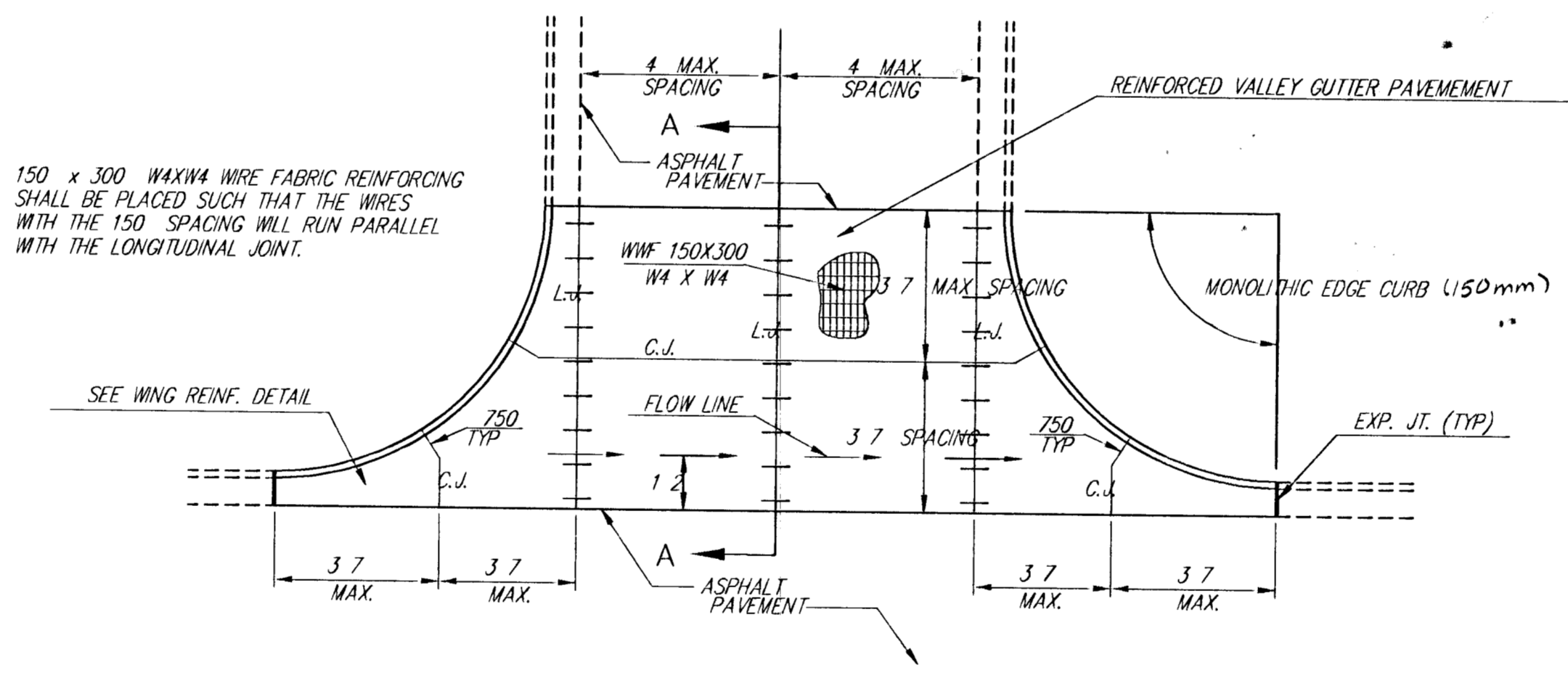


SAW JOINT DETAIL

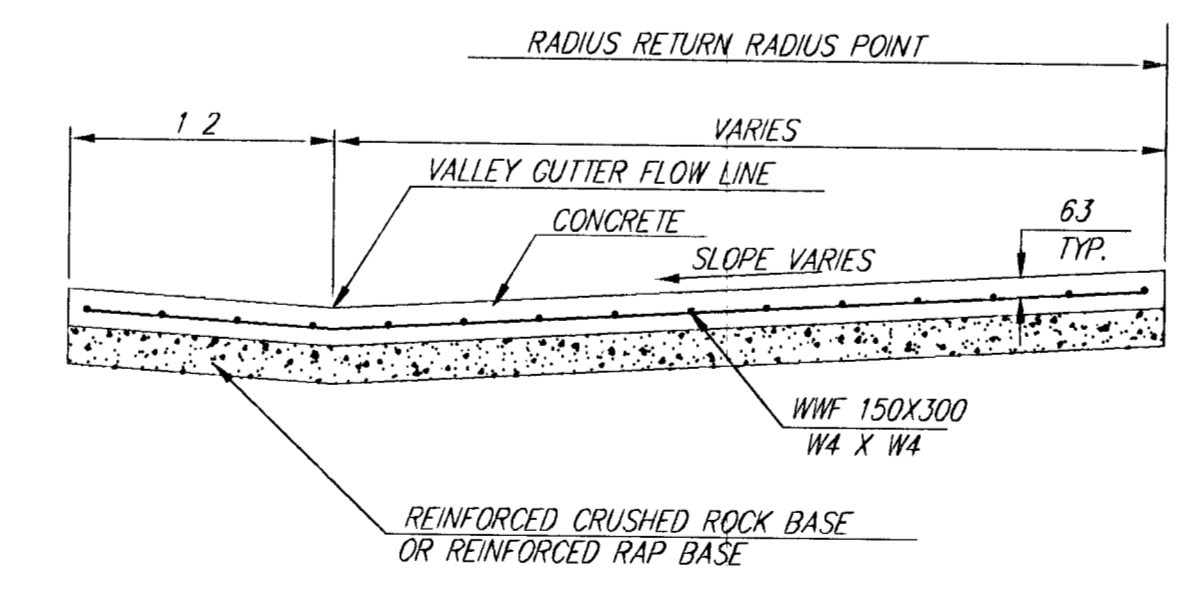


CROSSWALK BRICK PAVER SURFACE DETAIL

NOTE: Construction of the interlocking precast concrete paving stones shall conform to special provision 902-3956.



PLAN



SECTION A-A

REINFORCED VALLEY GUTTER DETAIL

MERIDIAN IMPROVEMENTS VALLEY GUTTER DETAILS

SRB 924 NORTH MAIN WICHITA, KANSAS 67203 318-264-8008 FAX 318-264-4821
SAVOY, RUGGLES & BOHM, P. A. ENGINEERING & SURVEYING
PROJECT NUMBER 472-92740
DRAWN DESIGN REVISIONS DATE UTILITY SRB JOB