

GENERAL NOTES

- THE CONTRACTOR SHALL COMPLY WITH ALL APPLICABLE SAFETY REGULATIONS. ALL CONSTRUCTION SHALL BE COMPLETED FOLLOWING CURRENT CITY STANDARD SPECIFICATIONS AND SPECIAL PROVISIONS.
- CONTRACTOR WILL BE REQUIRED TO PROVIDE NOTICE TO UTILITY COMPANIES A MINIMUM OF SEVENTY-TWO (72) HOURS PRIOR TO ANY EXCAVATION, AS FOLLOWS:

KANSAS ONE-CALL 687-2470

THE CONTRACTOR MUST NOTIFY THE FOLLOWING IN CASE OF AN EMERGENCY:

AT&T 1-800-246-8464
 BLACK HILLS ENERGY 1-800-694-8989
 CITY OF WICHITA WATER & SEWER 1-316-219-8921
 CITY OF WICHITA STORMWATER 1-316-268-4090
 CITY OF WICHITA TRAFFIC 1-316-268-4034
 COX COMMUNICATIONS 1-888-249-3530
 KANSAS GAS SERVICE 1-888-482-4950
 WESTAR ENERGY 1-800-544-4857

- UTILITY SERVICE LINES, POLES, ETC. ARE TO BE ADJUSTED AS NECESSARY BY OTHERS PRIOR TO CONSTRUCTION UNLESS THE PLANS SPECIFICALLY CALL FOR THEIR ADJUSTMENT BY THE CONTRACTOR OR UNLESS THE PLANS SPECIFICALLY IDENTIFY A UTILITY TO BE ADJUSTED BY ITS OWNER DURING CONSTRUCTION. EXISTING UTILITIES AND THEIR LOCATION, AS SHOWN ON THE PLANS, REPRESENT THE BEST INFORMATION OBTAINABLE FOR DESIGN. THE CONTRACTOR WILL BE REQUIRED TO WORK AROUND EXISTING UTILITIES WITHIN THE RIGHT-OF-WAY WHICH DO NOT CONFLICT WITH PROPOSED CONSTRUCTION.

- RUBBLE FROM THE REMOVAL OF MISCELLANEOUS STRUCTURES AND EXCESS EXCAVATION WHICH IS TO BE WASTED SHALL BE DISPOSED OF ON SITES TO BE PROVIDED BY THE CONTRACTOR. THESE SITES SHALL BE APPROVED BY THE ENGINEER AS TO SUITABILITY, APPEARANCE AND SITE LOCATION. LOCATIONS, IN THE OPINION OF THE ENGINEER, THAT WILL LEAVE AN UNSIGHTLY APPEARANCE WILL NOT BE APPROVED. ALL DISPOSAL SITES MUST BE APPROVED BY THE KANSAS DEPARTMENT OF HEALTH AND ENVIRONMENT. MATERIAL EITHER STOCKPILED OR DISPOSED OF IN A FLOOD PLAIN WILL REQUIRE A KANSAS STATE BOARD OF AGRICULTURE PERMIT. ANY MATERIAL DUMPED IN WATERS OF THE UNITED STATES OR WETLANDS IS SUBJECT TO U.S. CORPS. OF ENGINEERS PERMITTING REGULATIONS. ANY MATERIAL BURIED OR STOCKPILED BEYOND APPROVED CONSTRUCTION LIMITS WILL REQUIRE ADDITIONAL ARCHAEOLOGICAL INVESTIGATIONS UNLESS BURIED IN A PREVIOUSLY APPROVED BORROW LOCATION.

- TREES AND SHRUBS IN PUBLIC RIGHT-OF-WAY WHICH ARE IN DIRECT CONFLICT WITH PROPOSED NEW CONSTRUCTION SHALL BE REMOVED BY THE CONTRACTOR WITH THE CITY ENGINEER'S APPROVAL. TREES AND SHRUBS WHICH ARE NOT IN DIRECT CONFLICT WITH PROPOSED NEW CONSTRUCTION SHALL BE SAVED AND PROTECTED FROM DAMAGE.

- THE CONTRACTOR SHALL GIVE ALL PROPERTY OWNERS AND/OR TENANTS OF DEVELOPED PROPERTY ADJUTING THE CONSTRUCTION OF THIS PROJECT A MINIMUM OF TEN (10) DAYS NOTICE PRIOR TO START OF CONSTRUCTION.

- THE CONTRACTOR SHALL BE RESPONSIBLE FOR PRESERVING PROPERTY IRONS. THE CONTRACTOR WILL BE REQUIRED TO RE-ESTABLISH ANY PROPERTY IRONS WHICH ARE DAMAGED OR DESTROYED BY HIS CONSTRUCTION OPERATIONS. SUCH IRONS SHALL BE RE-ESTABLISHED BY A LICENSED LAND SURVEYOR IN ACCORDANCE WITH STATE LAWS.

- THE ENGINEERING DIVISION SHALL FIELD LOCATE WATER VALVES ONE TIME DURING CONSTRUCTION WHEN REQUESTED BY THE CONTRACTOR. IT SHALL BE THE CONTRACTOR'S RESPONSIBILITY TO PRESERVE SUCH FIELD LOCATIONS DURING THE CONSTRUCTION PROCESS. WATER VALVES, VALVE BOXES OR FIRE HYDRANTS DAMAGED DURING CONSTRUCTION SHALL BE REPAIRED BY CONTRACTOR AT HIS OWN EXPENSE. VALVE BOXES AND WATER METERS WITHIN THE PROJECT LIMITS SHALL BE ADJUSTED TO MATCH FINAL GRADES BY THE CONTRACTOR.

- THE CONTRACTOR SHALL NOTIFY THE INSPECTING ENGINEER AND TOM MASON AT 316-268-4574 WITH THE CITY OF WICHITA WITH THE ANTICIPATED CONSTRUCTION START DATE AND NOTIFY THEM OF PROJECT COMPLETION. STAKING AND INSPECTION FOR THIS PROJECT WILL BE THE RESPONSIBILITY OF THE CONTRACTOR.

- IF TRAFFIC WILL BE IMPACTED BY CONSTRUCTION, A TRAFFIC CONTROL PLAN MUST BE SUBMITTED AND APPROVED BY THE CITY TRAFFIC ENGINEER, BRIAN COON AT TRAFFIC@WICHITA.GOV BEFORE CONSTRUCTION CAN BEGIN. THE CONTRACTOR SHALL BE RESPONSIBLE FOR ALL TRAFFIC CONTROL MEASURES TO FACILITATE CONSTRUCTION. ALL CONSTRUCTION ZONE MARKINGS AND SIGNAGE SHALL CONFORM TO THE LATEST VERSION OF THE MANUAL ON UNIFORM TRAFFIC CONTROL DEVICES (MUTCD) AS PUBLISHED BY THE US DEPT. OF TRANSPORTATION, FEDERAL HIGHWAY ADMINISTRATION. ALL COSTS ASSOCIATED WITH CONSTRUCTION MARKINGS AND SIGNAGE SHALL BE THE CONTRACTOR'S RESPONSIBILITY.

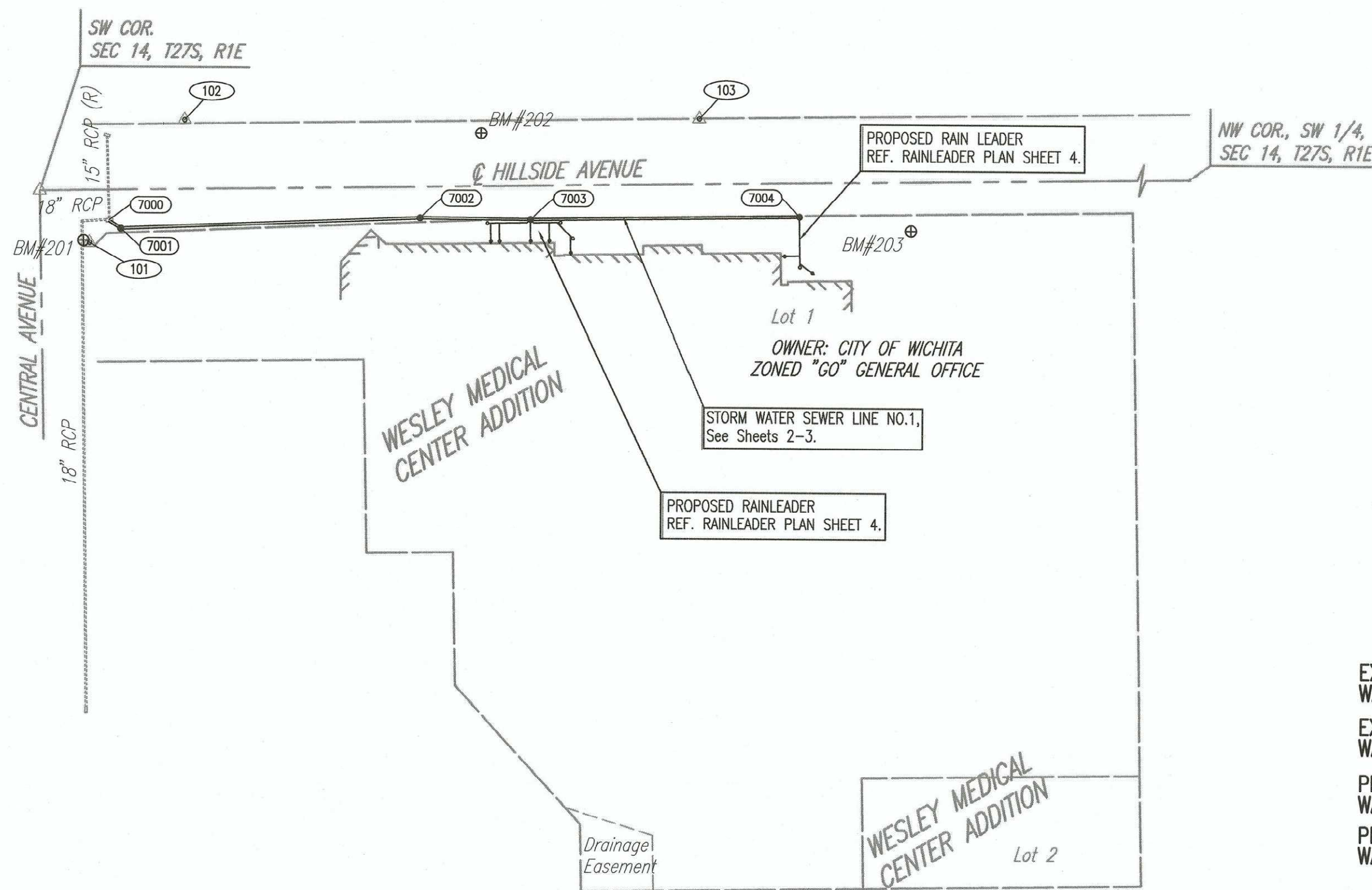
- ALL ELEVATIONS SHOWN ARE NAVD 88.

- ALL AREAS DISTURBED DURING CONSTRUCTION THAT WILL NOT BE UNDER PROPOSED PAVEMENT SHALL BE RESTORED TO MATCH EXISTING CONDITIONS.

- ANY SIDEWALK, DRIVE APPROACH, OR STREET PAVEMENT REMOVED TO CONSTRUCT PROJECT MUST HAVE A PAVEMENT CUT PERMIT AND BE REPLACED BY THE CITY CONTRACTOR. PERMITS CAN BE OBTAINED BY CALLING 316-268-4501 OR 316-268-4480.
- CITY MAINTENANCE OF STORM SEWER ENDS AT THE LAST STRUCTURE IN THE EASEMENT OR RIGHT-OF-WAY.

BID NOTES

- EACH BIDDER SHALL VISIT THE SITE OF THE PROJECT BEFORE SUBMITTING THE PROPOSAL FOR THIS WORK SO THAT HE WILL BE FULLY INFORMED OF THE EXISTING FIELD CONDITIONS AND THE OBSTACLES WHICH MIGHT BE ENCOUNTERED. UPON AWARD OF THE CONTRACT THE CONTRACTOR WILL NOT BE GRANTED ANY ADDITIONAL COMPENSATION WITH REGARDS TO TIME AND MONEY FOR CONDITIONS THAT MAY HAVE BEEN EVALUATED DURING ANY INSPECTION OF THE SITE.
- MEASUREMENT OF STORM SEWER CONDUIT IS FROM CENTER TO CENTER OF STRUCTURES.
- PAVEMENT REMOVAL AND REPLACEMENT LIMITS ARE APPROXIMATE. CONTRACTOR SHALL REMOVE AND REPLACE PAVEMENT TO THE NEAREST JOINT. CONTRACTOR SHALL PROVIDE A NEAT FULL DEPTH SAW CUT AT PAVEMENT REMOVAL LIMITS.
- CONTRACTOR SHALL CUT AND CAP IRRIGATION LINES AS NEEDED FOR CONSTRUCTION. CONTRACTOR SHALL NOTIFY OWNER AND ASSIST OWNER AS NEEDED WITH LOCATION OF DAMAGED LINES TO BE REPAIRED BY THE OWNER'S LANDSCAPE CONTRACTOR. ALL COST FOR THIS WORK SHALL BE INCLUDED IN THE CONTRACTOR'S BID FOR "SITE CLEARING AND RESTORATION."



BENCHMARKS

- BM#201- N: 1,688,577.43, E: 1,659,870.26
 SQUARE CUT ON THE NORTH BACK-OF-CURB OF CENTRAL AVE. ON THE NORTHEAST CORNER OF HILLSIDE ST. AND CENTRAL AVE. ON THE SOUTHWEST SIDE OF THE SIDEWALK RAMP. +/- 5.8' NORTH-NORTHEAST TO HCP-101. +/- 13.1' NORTH-NORTHWEST TO THE SOUTHWEST BOLT ON THE TRAFFIC SIGNAL POLE. +/- 13.5' NORTHEAST TO THE SOUTHWEST CORNER OF THE RETAINING WALL.
 ELEV.= 1332.02 NAVD88
- BM#202- N: 1,688,935.68, E: 1,659,771.44
 SQUARE CUT ON THE WEST BACK-OF-CURB OF HILLSIDE ST. AND NORTH OF EAST ENTRANCE TO MCDONALDS. +/- 30.0' SOUTH TO CENTERLINE OF ENTRANCE TO MCDONALDS. +/- 7.3' NORTHWEST TO THE SOUTHWEST BOLT ON THE BASE OF A BUS STOP SIGN POST. +/- 20.0' SOUTHWEST TO THE BASE OF THE NORTHEAST CORNER OF THE DRIVE-THRU SIGN POST.
 ELEV.= 1337.46 NAVD88
- BM#203- N: 1,689,322.24, E: 1,659,857.95
 SQUARE CUT ON THE WEST BACK-OF-CURB OF THE WEST PARKING SPACE, ON THE SOUTH SIDE OF THE PEDESTRIAN CATWALK. +/- 17.3' SOUTH TO THE CENTERLINE OF THE EXIT DRIVE ON THE SOUTH SIDE OF THE PEDESTRIAN CATWALK. +/- 19.0' NORTHEAST TO THE BASE OF A HANDICAPPED PARKING SIGN. +/- 25.0' WEST TO THE EAST CURB LINE OF HILLSIDE ST.
 ELEV.= 1338.89 NAVD88

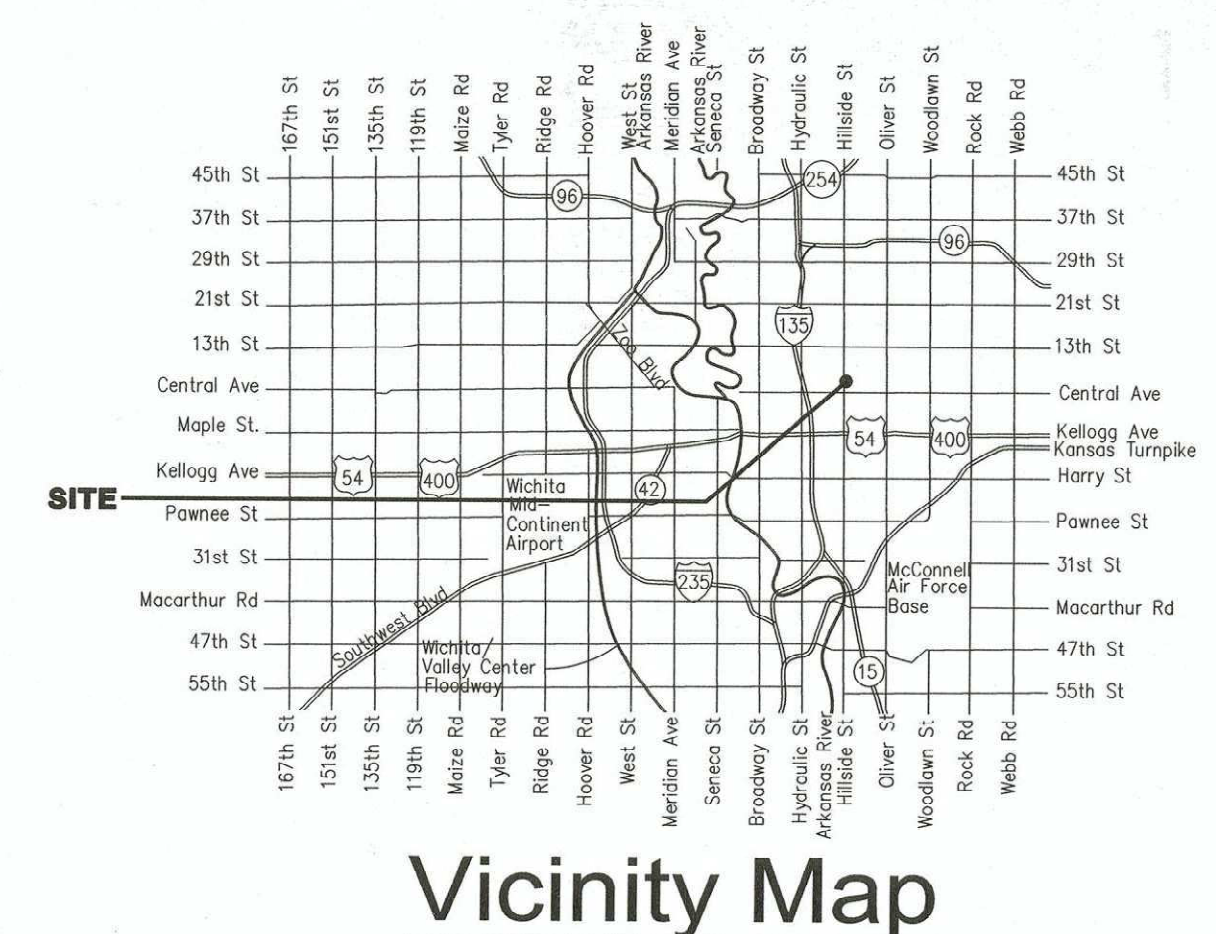
CONTROL POINTS

- PT.-101
 N: 1,688,582.807, E: 1,659,872.220
 MAG NAIL SET IN A CONCRETE JOINT ON THE NORTHEAST CORNER OF HILLSIDE ST. AND CENTRAL AVE.
 1) 7.94' NORTHEAST TO THE SOUTHWEST CORNER OF THE TALL RETAINING WALL RUNNING NORTH AND EAST.
 2) 10.73' NORTHWEST TO THE SOUTHWEST BOLT ON THE BASE OF THE TRAFFIC SIGNAL POLE.
 3) 23.00' SOUTHWEST TO THE EAST END OF THE CURB RETURN ON THE NORTHEAST CORNER OF THE INTERSECTION.
- PT.-102
 N: 1,688,667.311, E: 1,659,760.652
 MAG NAIL SET IN A CONCRETE JOINT, SOUTH OF THE EAST DRIVE TO CHIPOTLE.
 1) 0.75' WEST TO THE WEST EDGE OF THE SIDEWALK.
 2) 12.06' NORTH TO THE SOUTH CURB LINE OF THE DRIVE.
 3) 17.71' SOUTHWEST TO THE SOUTH CURB RETURN OF THE DRIVE.
- PT.-103
 N: 1,689,131.332, E: 1,659,757.227
 LARGE PHILLIPS SCREW SET IN A CONCRETE JOINT IN THE SIDEWALK, NORTHEAST OF MCDONALDS.
 1) 11.45' EAST-SOUTHWEST TO THE SOUTH CURB RETURN OF ELM ST.
 2) 14.70' NORTH-NORTHWEST TO THE WEST CURB RETURN ON THE SOUTH SIDE OF ELM ST.
 3) 19.79' NORTHWEST TO THE BASE OF THE STOP SIGN POST.

COORDINATE LIST		
POINT	NORTHING	EASTING
7000	1,688,600.5237	1,659,851.5924
7001	1,688,610.9364	1,659,859.2823
7002	1,688,880.9024	1,659,848.3493
7003	1,688,980.3619	1,659,849.3737
7004	1,689,221.9647	1,659,845.7884

STORM SEWER IMPROVEMENTS to serve WESLEY MEDICAL CENTER

550 N. Hillside Street
 CITY OF WICHITA, KANSAS
 Gary Janzen, P.E. City Engineer
 Project Number
 0471 PPD (133119)



SHEET INDEX

- | | |
|-------------|------------------------------------------------|
| SHEET NO. 1 | TITLE SHEET |
| SHEET NO. 2 | SWS LINE NO. 1 |
| SHEET NO. 3 | SWS LINE NO. 1 |
| SHEET NO. 4 | RAINLEADER PLAN |
| SHEET NO. 5 | PRECAST MANHOLE DETAIL |
| SHEET NO. 6 | MISCELLANEOUS DETAILS |
| | EROSION CONTROL BMP'S (REFERENCE CITY WEBSITE) |

Stormwater Certification:
 Redevelopment

These construction plans were prepared in accordance with the current Stormwater Management Regulations as set forth in the City of Wichita's Stormwater Management Ordinance 16.32 and the policies/guidelines presented in the Wichita/Sedgwick County Stormwater Manual.

Disturbed Area = 0.30 ACRES
 Water Quality Treatment: N/A
 Downstream Channel Protection: N/A
 Detention: N/A
 The BMP used for this development is N/A

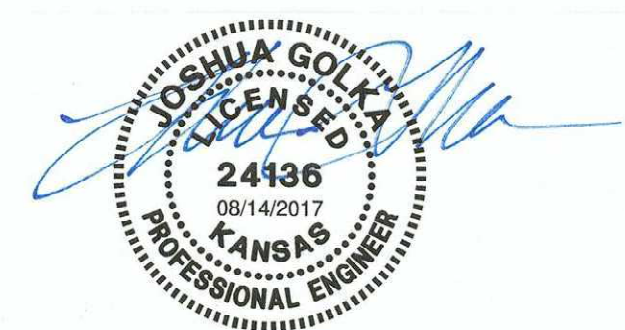
APPROVED AS NOTED
 BY WICHITA PUBLIC WORKS ENGINEERING
 AND STORMWATER DIVISION

Engineering *Robert Diefel* 8/15/2017
 Stormwater *Joe Heible* PE 8/15/17

NOTE TO CONTRACTORS

Inspection and testing for this project is to be provided by a Licensed Consulting Engineering Firm under contract with the Owner/Developer. Said Inspection to be in accordance with the City of Wichita standard construction engineering practices and certified by a Licensed Professional Engineer in the state of Kansas. No work shall be performed by the Contractor without such inspection nor shall any work be commenced without written authorization by City Engineering. All Construction and Materials shall comply with the current City of Wichita Specifications and Standards and Special Provisions. (on file and available at Wichita.gov).

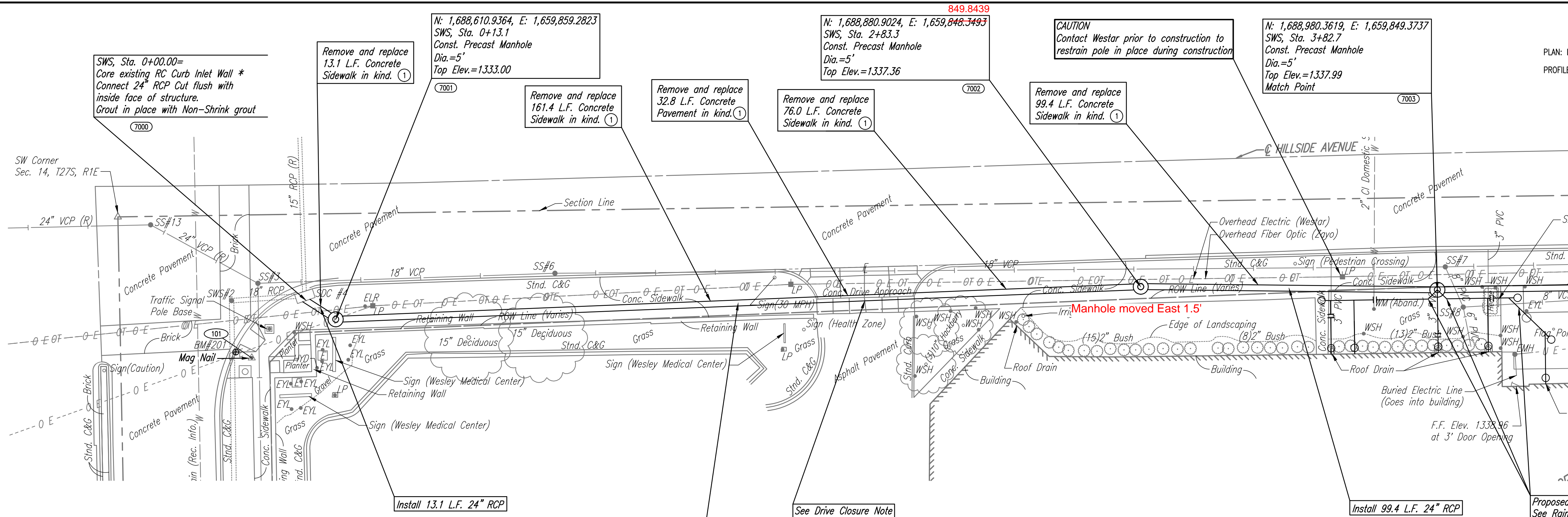
An approved copy of these plans signed by City staff are required on-site.



PLAN	CHECKED	DATE
	CHECKED	

PROFILE	CHECKED	DATE
	CHECKED	

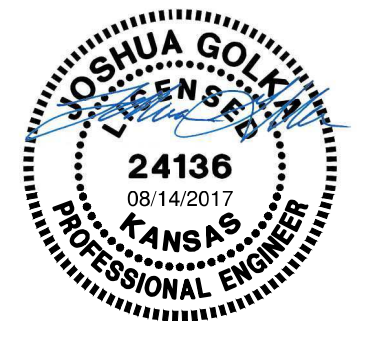
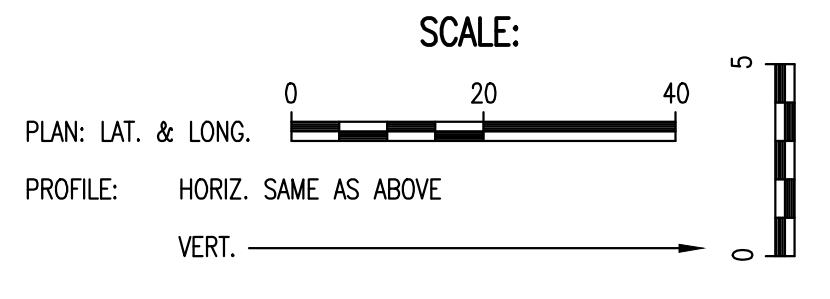
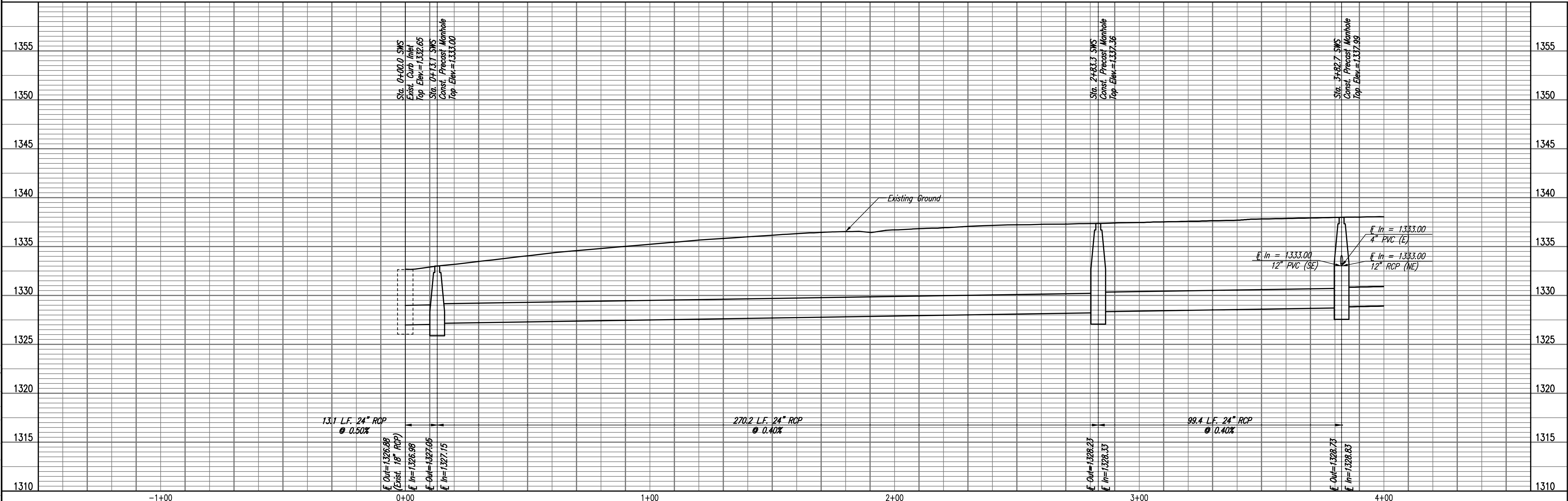
Saved: 08-14-2017 2:50:27 PM by KIPRIS/DEKAT
 Plot Scale: 1" = 10'-0" (Horizontal) 1" = 10'-0" (Vertical)
 U:\Projects\2017\170645\Drawings\170645-002-SWS LINE NO.1



DRIVE CLOSURE NOTE
 CONTRACTOR SHALL MAKE EVERY EFFORT TO MINIMIZE CLOSURE TIME AT EMERGENCY ROOM ENTRANCE DRIVE. TRENCH SHALL BE PLATED AND OPENED FOR ACCESS WHEN CONSTRUCTION ACTIVITIES CEASE FOR A PERIOD OF MORE THAN 4 HOURS. CONTRACTOR SHALL REPLACE DRIVE PAVEMENT WITH HIGH EARLY STRENGTH CONCRETE PAVEMENT. WORK SHALL BE PERMITTED AND COORDINATED THROUGH THE STREET INSPECTOR. REFERENCE GENERAL NOTE NO. 13.

7000 - SEE SHEET NO. 1 FOR SWS COORDINATES
 ① - REFERENCE GENERAL NOTE NO. 13.
 * PRIOR TO BEGINNING CONSTRUCTION, THE CONTRACTOR SHALL EXCAVATE THE EXISTING RC CURB INLET AT STATION 0+00.00 TO VERIFY ITS HORIZONTAL AND VERTICAL LOCATION. THE STRUCTURE LOCATION SHALL BE REPORTED TO THE ENGINEER SO THAT ANY NECESSARY PLAN MODIFICATIONS CAN BE MADE. ALL LABOR AND MATERIALS NECESSARY TO COMPLETE THE CONNECTION SHALL BE CONSIDERED SUBSIDIARY TO THE PROJECT.

SWS LINE NO. 1

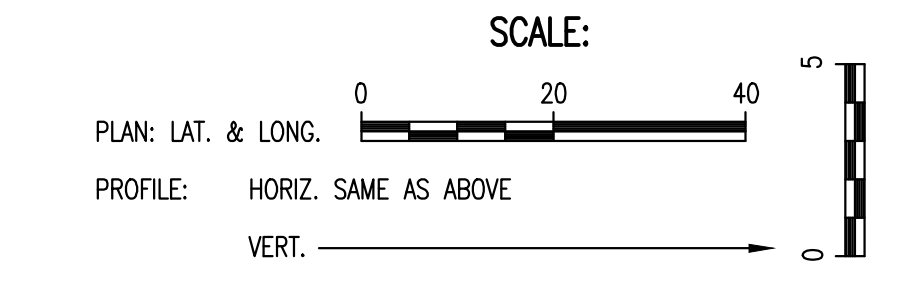
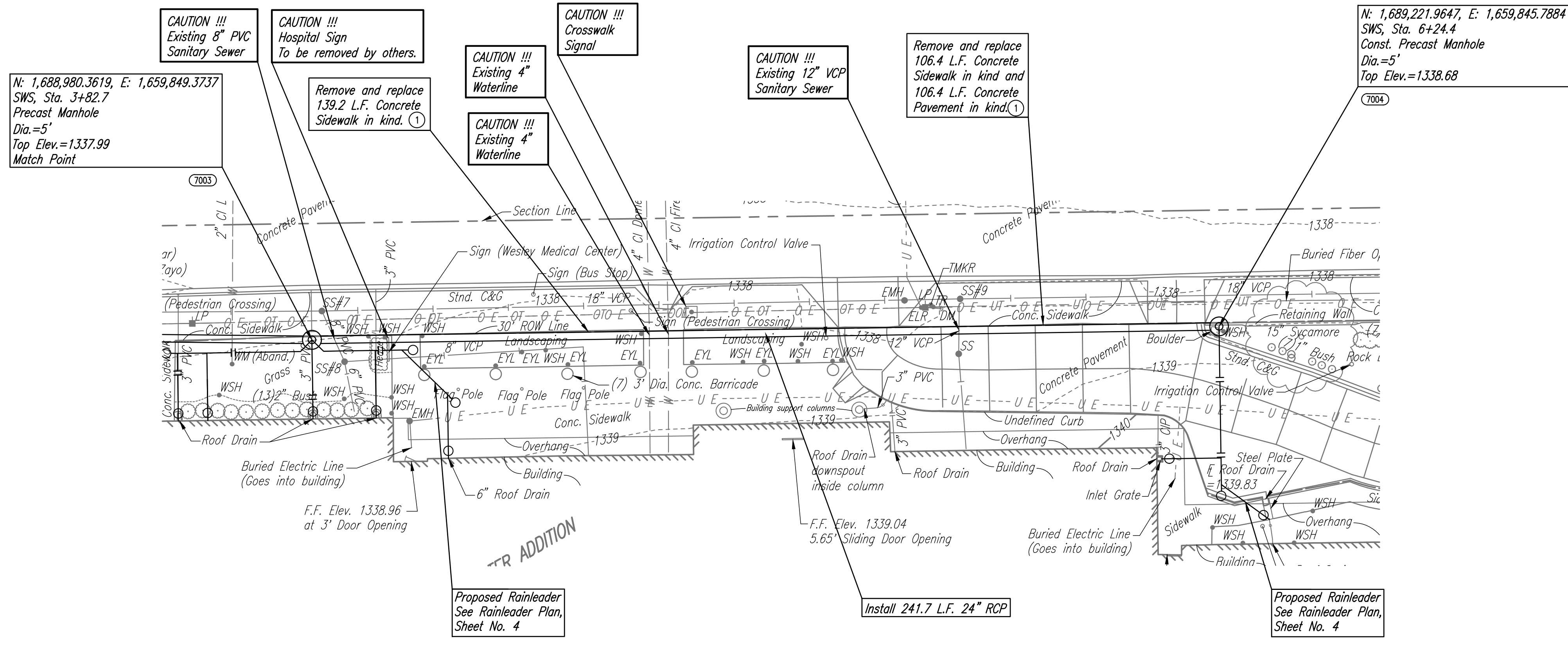


Storm Sewer Improvements
 to Serve Wesley Medical Center
SWS LINE NO. 1
 Designed by JAG, G&S
 Drawn by G&S
 Job No. 35-170645-000
 Date JULY 2017
 CITY OF WICHITA PROJECT NO. 0471 PPD (133119)
 GARY JANZEN, P.E. - CITY ENGINEER

PLAN	CHECKED	CHECKED
BY		
DATE		

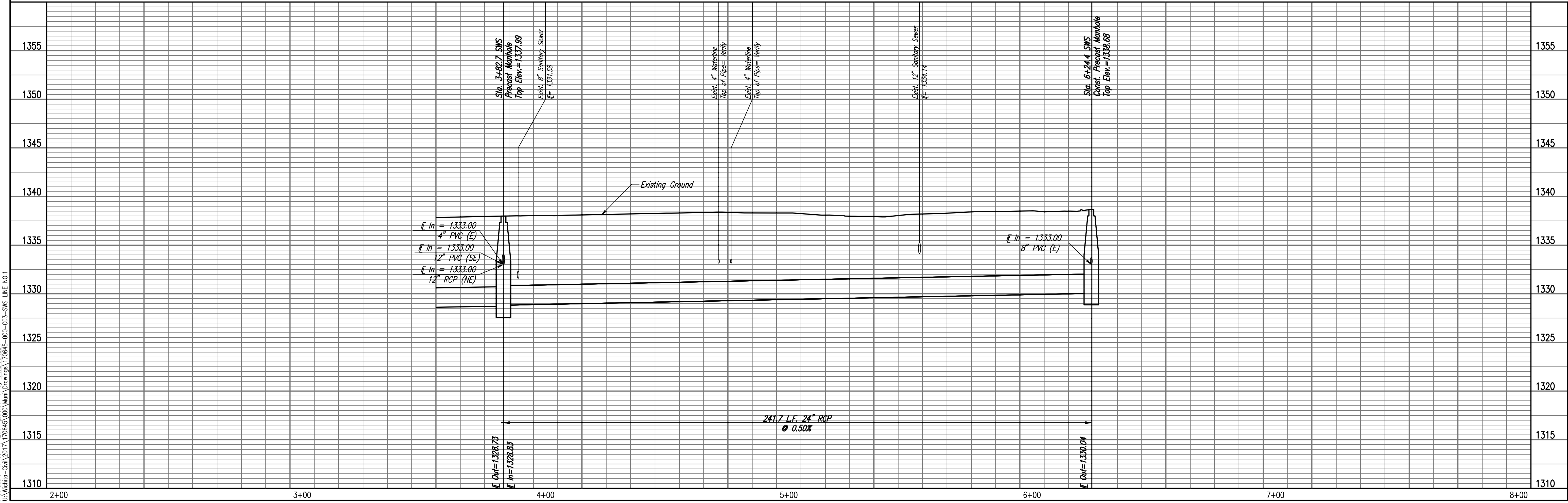
PROFILE	CHECKED	CHECKED
BY		
DATE		

Saved: 08-14-2017 2:53:46 PM by KIPRIS/DEKAT
 Plot Scale: 1" = 10'-0" (1:120) 2:56:31 PM by GAGE/SCHAEER
 U:\Wichita-Civil\2017\170645\000\Wm\Drawings\170645-000-SWS LINE NO.1



7000 - SEE SHEET NO. 1 FOR SWS COORDINATES
 1 - REFERENCE GENERAL NOTE NO. 13.

SWS LINE NO. 1



STORM SEWER IMPROVEMENTS
 TO SERVE WESLEY MEDICAL CENTER

SWS LINE NO. 1

Designed By: JAG, GAG
 Drawn By: GAG

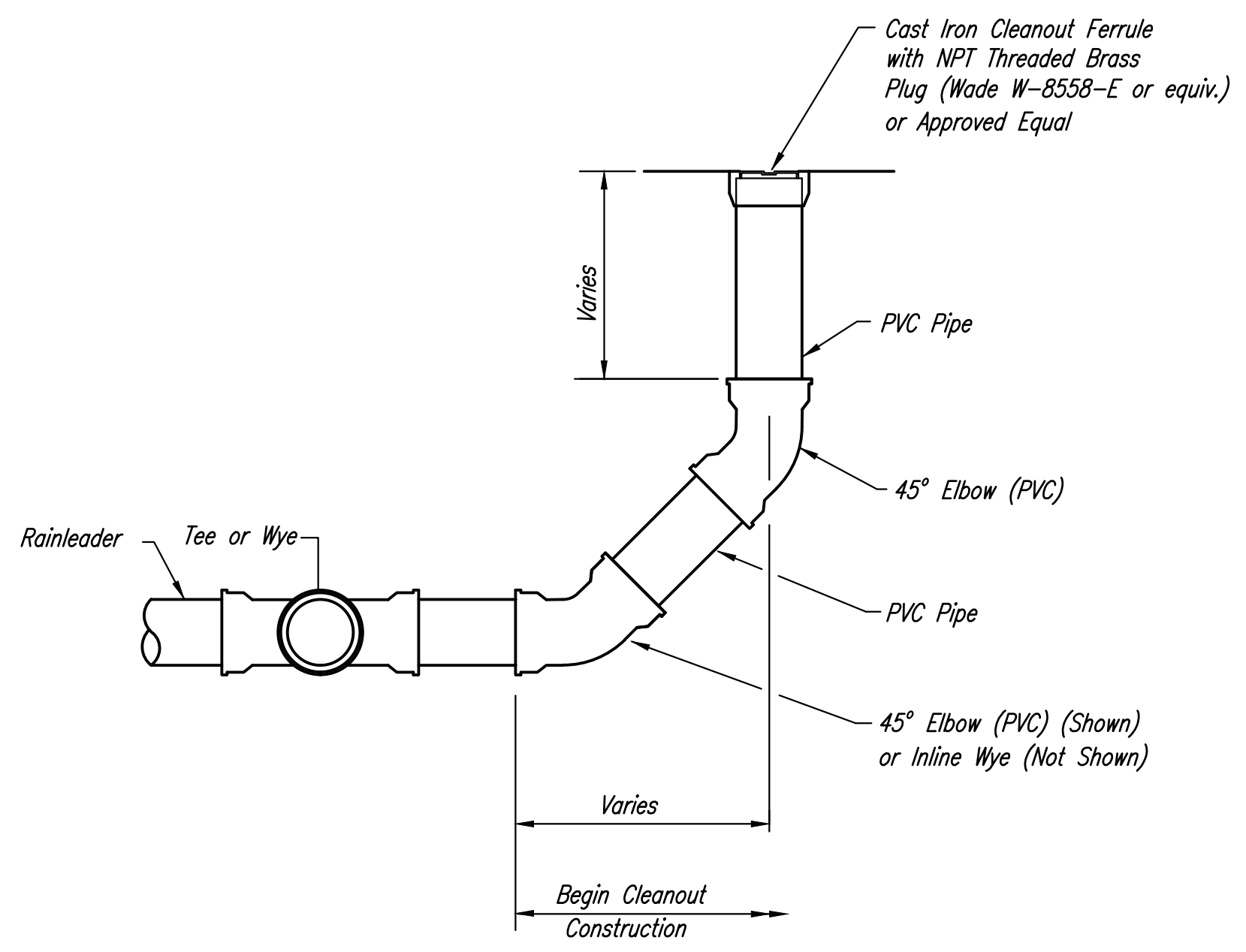
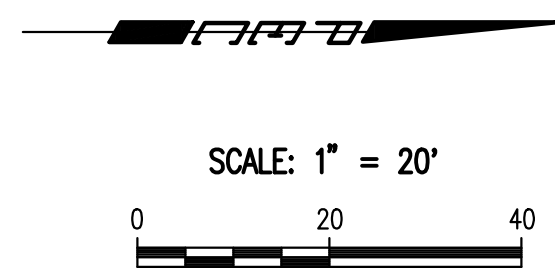
Job No.: 35-170645-000
 Date: JULY 2017

GARY JANZEN, P.E. - CITY ENGINEER
 CITY OF WICHITA PROJECT NO. 0471 PPD (133119)

PROFESSIONAL ENGINEERING CONSULTANTS P.A.
 303 SOUTH TOPEKA WICHITA, KS 67202
 316-262-2691 www.pec.com

PEC

Sheet 3 of 6

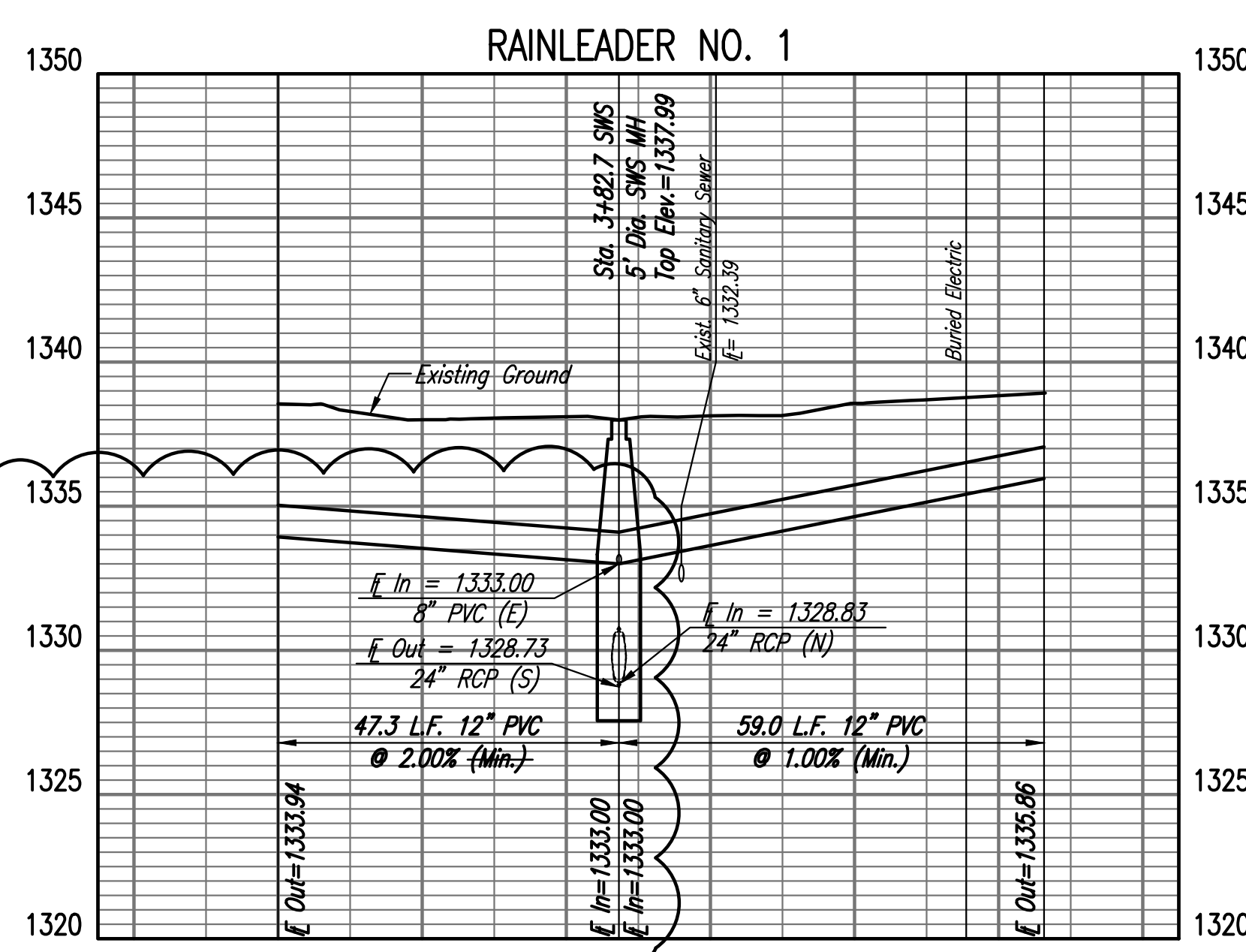
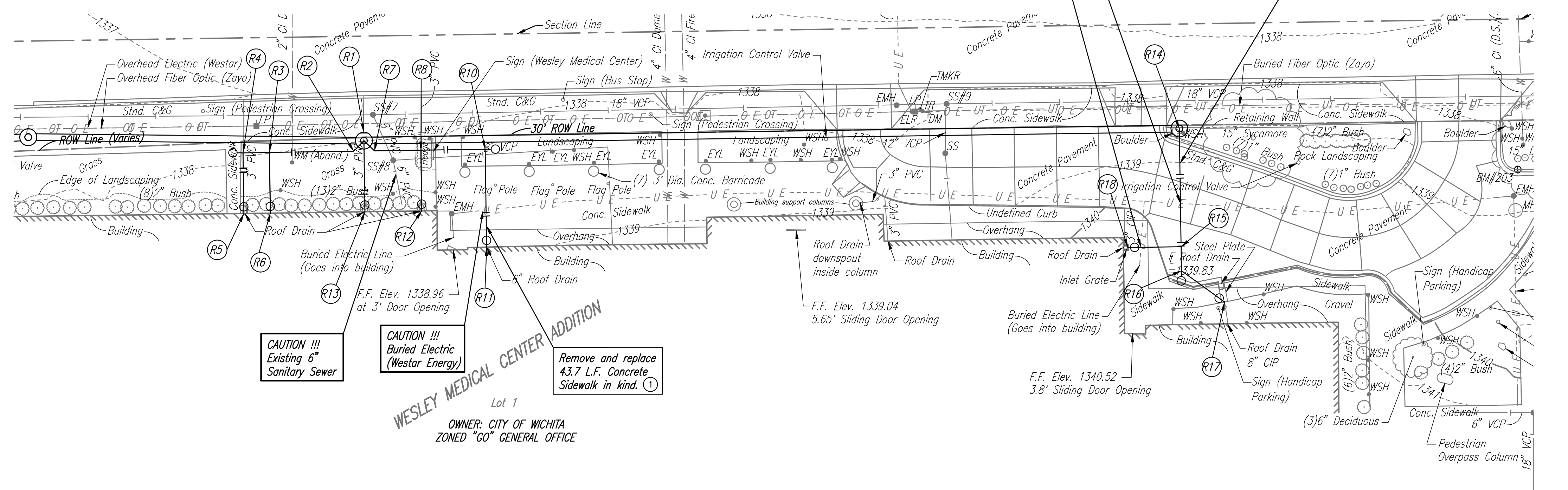


RAINLEADER CLEANOUT ASSEMBLY DETAIL
NOT TO SCALE

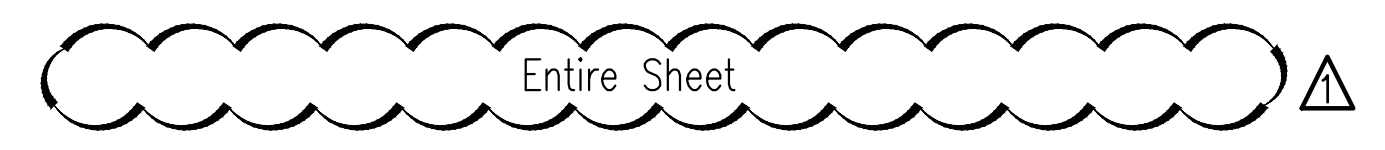
NOTE: CLEANOUT RISERS SHALL BE 6" FOR RAINLEADERS LARGER THAN 4". FITTINGS, REDUCERS, AND ADAPTORS AS NECESSARY.

MECHANICAL COORDINATION NOTE
1. THE MECHANICAL CONTRACTOR SHALL BE RESPONSIBLE FOR REMOVING EXISTING CONCRETE SPLASH PADS WITH GRATES AND CONNECTING BUILDING PIPING TO DRAIN BASINS. THE DRAIN BASINS SET BY THE SITE CONTRACTOR SHALL BE SET IN APPROXIMATELY THE SAME LOCATION AS THE EXISTING CONCRETE SPLASH PADS.

- R1: N: 1,688,980.3619, E: 1,659,849.3737
SWS, Sta. 3+82.7
Precast Conc. MH
Top of MH Elev. = 1337.99
In = 1333.00 (12" RL) (SE)
In = 1333.00 (12" RL) (NE)
In = 1333.00 (8" RL) (E)
In = 1328.83 (24" RCP) (N)
Out = 1328.73 (24" RCP) (S)
See sheet no. 2 for continuation.
- R2: N: 1,688,967.9297, E: 1,659,859.6424
1- 12" Bend
Defl. = 45°00'00"
4.3'- 12" PVC Pipe (NW) @ 2.0% Slope (Min.)
In = 1333.08 (Min.)
- R3: N: 1,688,952.4844, E: 1,659,859.8730
1- 12" x 8" Reducer (S)
1- 12" x 12" Wye
25.0'- 12" PVC Pipe (N) @ 2.0% Slope (Min.)
In = 1333.58 (Min.)
- R4: N: 1,688,944.6403, E: 1,659,859.990
1- 8" x 8" Wye
1- Cleanout Assembly
7.8'- 8" PVC Pipe (N) @ 2.0% Slope (Min.)
In = 1333.45 (Min.)
- R5: N: 1,688,944.8035, E: 1,659,870.9889
1- 8" ADS Drain Basin with Standard Light Duty grate or approved Equal.
See Mechanical Coordination Note, This Sheet.
Top = Match Existing
In = 1335.86 (Min.)
18.0'- 8" PVC Pipe (W) @ 2% Slope (Min.)
- R6: N: 1,688,952.6476, E: 1,659,870.8684
1- 12" x 12" ADS Tee. Cap (E) for Mechanical Contractor.
1- 12" x 8" Reducer (Vert.)
1- 8" ADS Drain Basin with Standard Light Duty grate or approved Equal.
Top = Match Existing
18.0'- 12" PVC Pipe (W) @ 2.0% Slope (Min.)
Cap and Flag for Mechanical Contractor.
In = 1333.94
- R7: N: 1,688,987.3420, E: 1,659,859.2331
1- 12" Bend
Defl. = 45°00'00"
4.3'- 12" PVC Pipe (SW) @ 1.0% Slope (Min.)
In = 1333.04 (Min.)
- R8: N: 1,688,997.3418, E: 1,659,859.2034
1- 12" x 8" Wye
13.7'- 12" PVC Pipe (S) @ 1.0% Slope (Min.)
In = 1333.18 (Min.)
- R9: Not Used
- R10: N: 1,689,016.3012, E: 1,659,851.9195
1- 12" x 12" Wye
1- Cleanout Assembly
19.1'- 12" PVC Pipe (S) @ 1% Slope (Min.)
Out = 1333.37 (Min.)
- R11: N: 1,689,016.7349, E: 1,659,880.9405
1- Cleanout Assembly
29.0'- 12" PVC Pipe (W) @ 1.0% Slope (Min.)
Cap and Flag for Mechanical Contractor.
Out = 1335.86
- R12: N: 1,688,997.5052, E: 1,659,870.2021
1- 8" ADS Drain Basin with Standard Light Duty grate or approved Equal.
See Mechanical Coordination Note, This Sheet.
Top = Match Existing
In = 1335.86 (Min.)
18.0'- 8" PVC Pipe (W) @ 2% Slope (Min.)
- R13: N: 1,688,980.6747, E: 1,659,870.4521
1- 8" ADS Drain Basin with Standard Light Duty grate or approved Equal.
See Mechanical Coordination Note, This Sheet.
Top = Match Existing
In = 1335.86 (Min.)
21.1'- 8" PVC Pipe (W) @ 2% Slope (Min.)
- R14: N: 1,689,221.9647, E: 1,659,845.7884
Precast Conc. MH
Top of MH Elev. = 1338.68
In = 1333.0 (8" RL) (E)
Out = 1330.04 (24" RCP) (S)
See sheet no. 3 for continuation.
- R15: N: 1,689,222.4848, E: 1,659,878.8349
1- 8" x 4" Wye
35.0'- 8" PVC Pipe (W) @ 1% Slope (Min.)
Out = 1333.35 (Min.)
- R16: N: 1,689,222.5904, E: 1,659,887.9526
1- 8" x 8" Wye
1- Cleanout Assembly
7.1'- 8" PVC Pipe (W) @ 1.0% Slope (Min.)
Out = 1333.42 (Min.)
- R17: N: 1,689,235.3708, E: 1,659,897.2453
Connect PVC Rainleader to Existing Building Piping as required.
Out = Match Existing
15.8'- 8" PVC Pipe (SW) @ 1.0% Slope (Min.)
1- Cleanout Assembly
- R18: N: 1,689,206.7087, E: 1,659,881.0690
Connect PVC Rainleader to Existing Building Piping as required.
Out = Match Existing
1- 4" x 3" Reducer
1- Cleanout Assembly
15.8'- 4" PVC Pipe (N) @ 1.0% Slope (Min.)



- RAIN LEADER NOTES**
- REMOVE EXISTING CURB CUT BOXES, GRATES, AND MISCELLANEOUS APPURTENANCES AS REQUIRED. CONTRACTOR TO FIELD VERIFY WITH OWNER AND ENGINEER PRIOR TO DEMOLITION AND REPLACE CURB CUT BOXES AND GRATES WITH CONCRETE. CAP EXISTING RAIN LEADERS ABANDONED IN PLACE. EXISTING RAIN LEADERS IN CONFLICT WITH PROPOSED PIPE TO BE REMOVED BY THE CONTRACTOR. ALL COST SHALL BE CONSIDERED SUBSIDIARY TO OTHER RAINLEADER BID ITEMS. ALL CURB WORK SHALL BE IN ACCORDANCE WITH GENERAL NOTE NO. 13.
 - PIPE SLOPES PROVIDED ARE MINIMUM. CONTRACTOR MAY MAKE FIELD ADJUSTMENTS AS NEEDED TO COMPLETE THE WORK. UNDER NO CONDITION WILL THE SLOPE BE LESS THAN THE MINIMUM INDICATED ON THE PLANS.
 - CONNECT RAINLEADERS TO SWS MANHOLES, CUT FLUSH WITH INSIDE FACE OF MANHOLE AND GROUT IN PLACE WITH NON-SHRINK GROUT.
 - PIPE 12" IN DIAMETER AND SWS STRUCTURES ARE APPROVED WITH 0471 PPD. PIPE LESS THAN 12" IN DIAMETER WILL BE REVIEWED, APPROVED, AND INSPECTED BY MABCD.
 - CLEANOUTS, WYES, REDUCERS, AND ALL BENDS OR MISCELLANEOUS FITTINGS REQUIRED TO COMPLETE THE WORK SHALL NOT BE PAID FOR SEPARATELY AND SHALL BE INCLUDED IN THE CONTRACTORS UNIT PRICE BID PER LINEAR FOOT OF RAIN LEADER PIPE.



Joshua G. K...
24136
08/28/2011
KANSAS
PROFESSIONAL ENGINEER

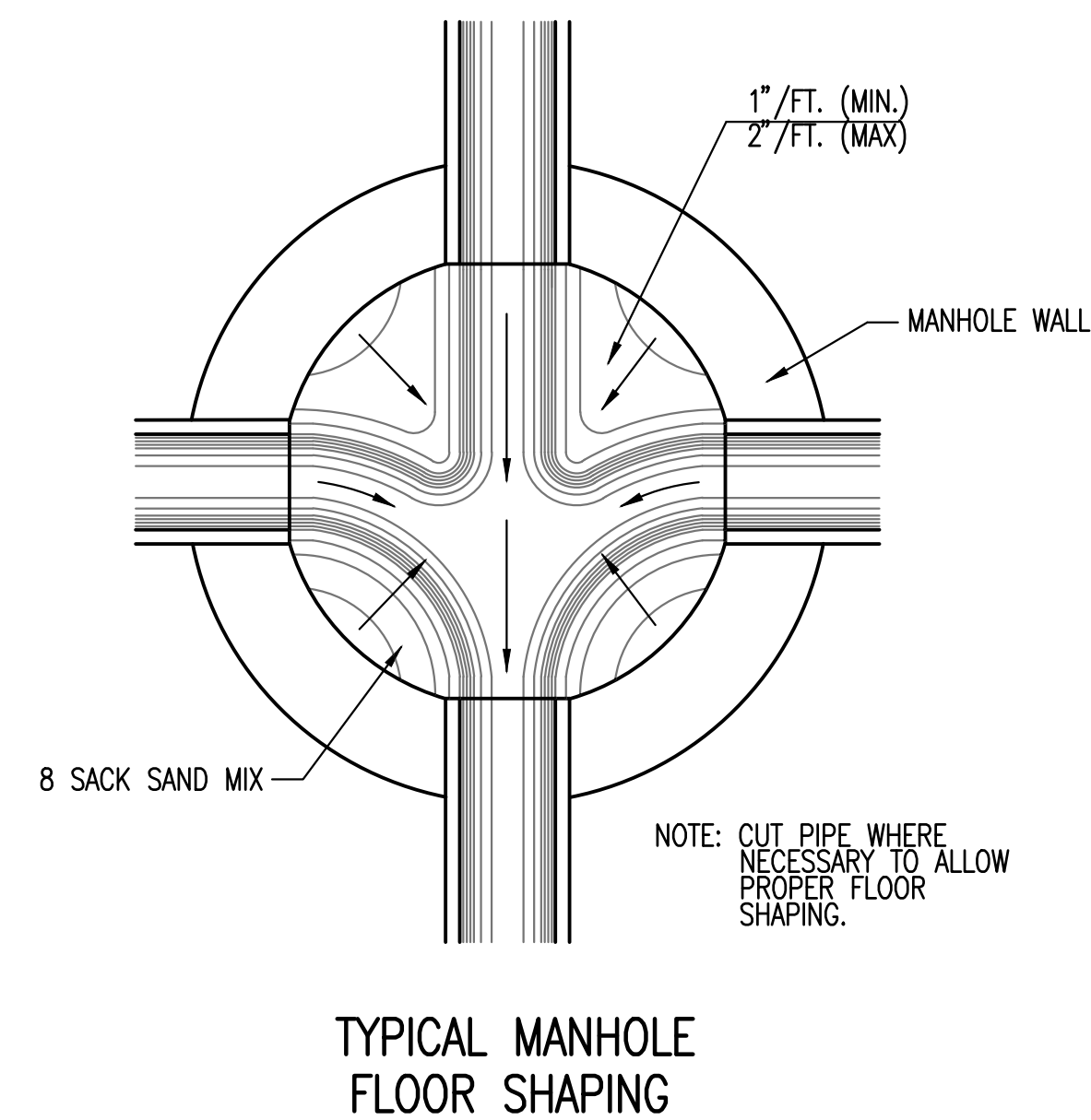
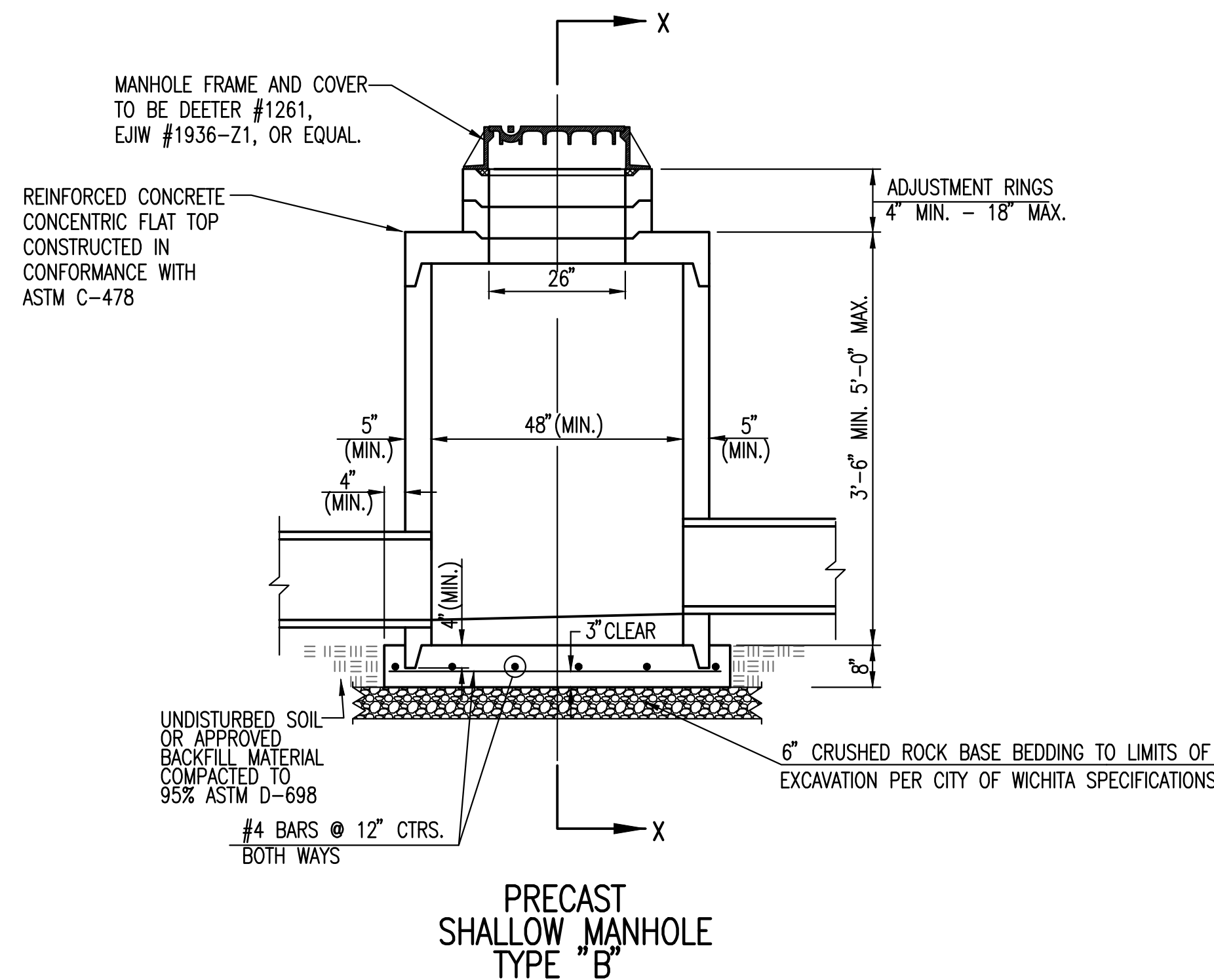
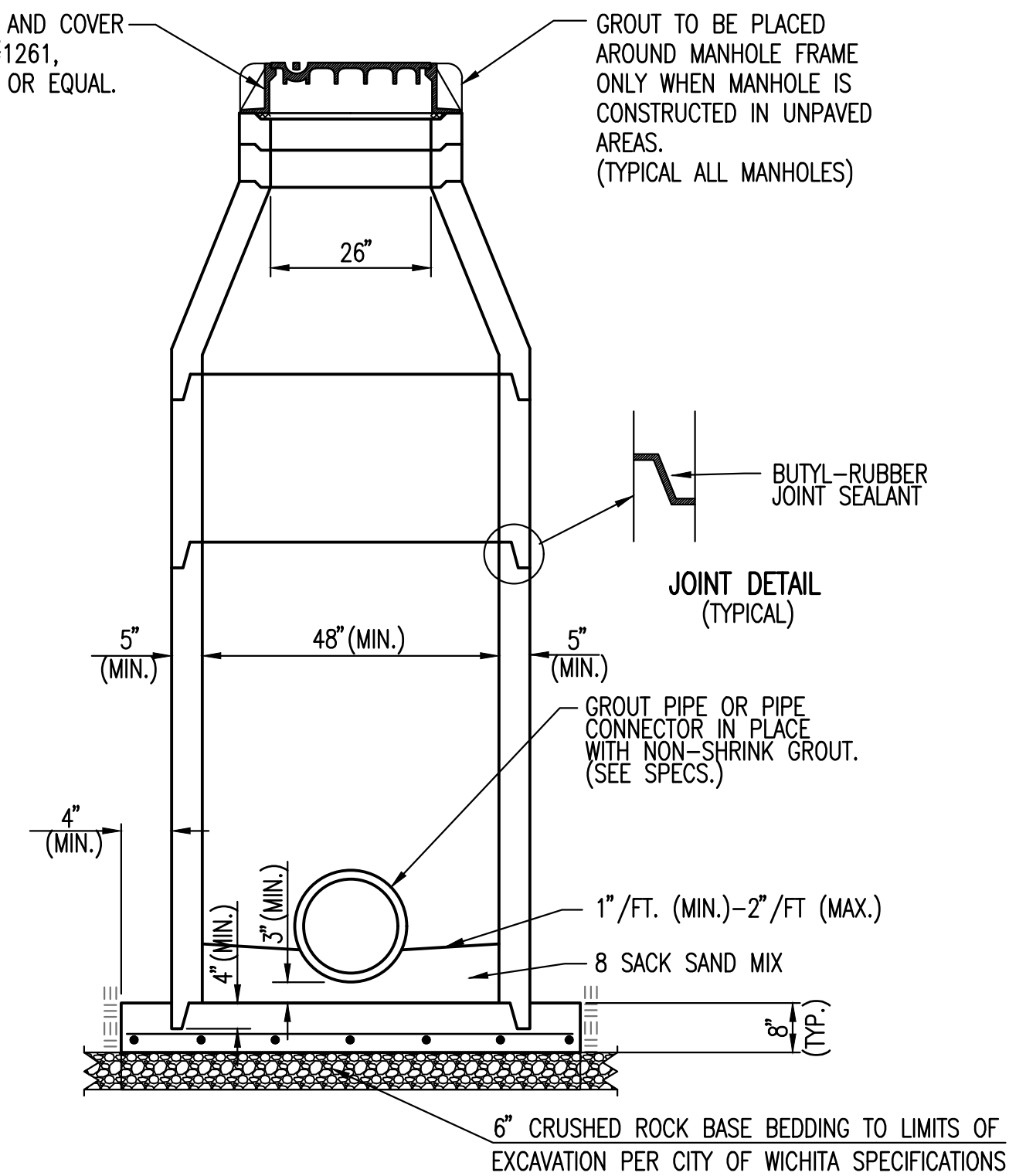
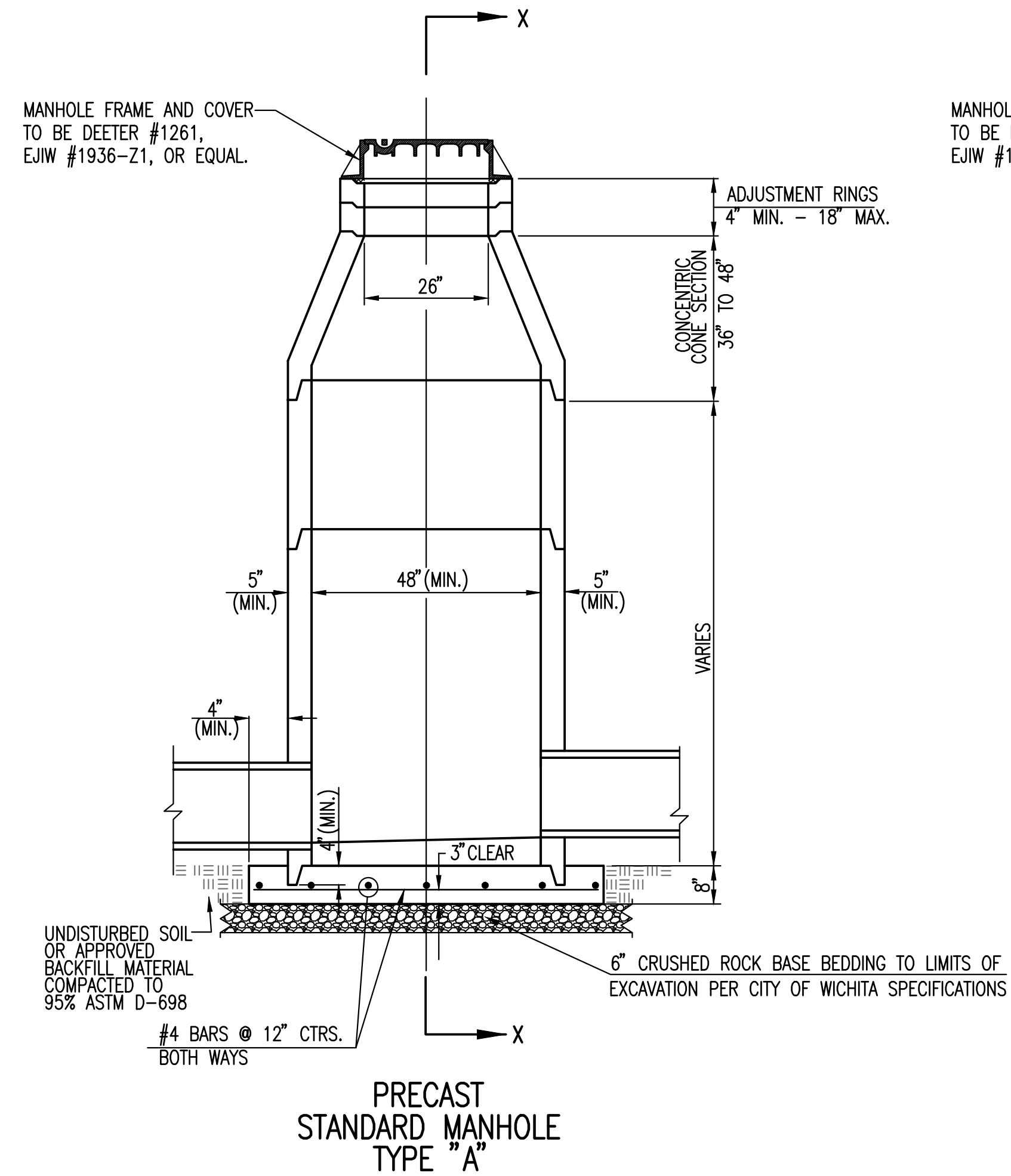
Addendum #2-R6 Flowline and Drain Basin Revision JAG 08/28/2017
Addendum #1-Rainleader Revisions JAG 08/22/2017

No.	Revision	By	Date

STORM SEWER IMPROVEMENTS TO SERVE WESLEY MEDICAL CENTER RAINLEADER PLAN
GARY JANZEN, P.E. - CITY ENGINEER
CITY OF WICHITA PROJECT NO. 0471 PPD (133119)
PROFESSIONAL ENGINEERING CONSULTANTS, P.A.
303 SOUTH TOPEKA WICHITA, KS 67202
316-262-2691 www.pec1.com

Designed by JAG, GAS Job No. 35-170645-000 SHT. 4 of 6
Drawn by GAS Date JULY 2017

Sowed: 08-28-2017 1:31:33 PM by GAGE SCHEER
 Plot Scale: 1" = 40'-0" 08-28-2017 1:32:33 PM by GAGE SCHEER
 U:\Wichita-Civil\2017\170645\000\Drawings\170645-000-00-RAINLEADER PLAN-Addendum 2



GENERAL NOTES

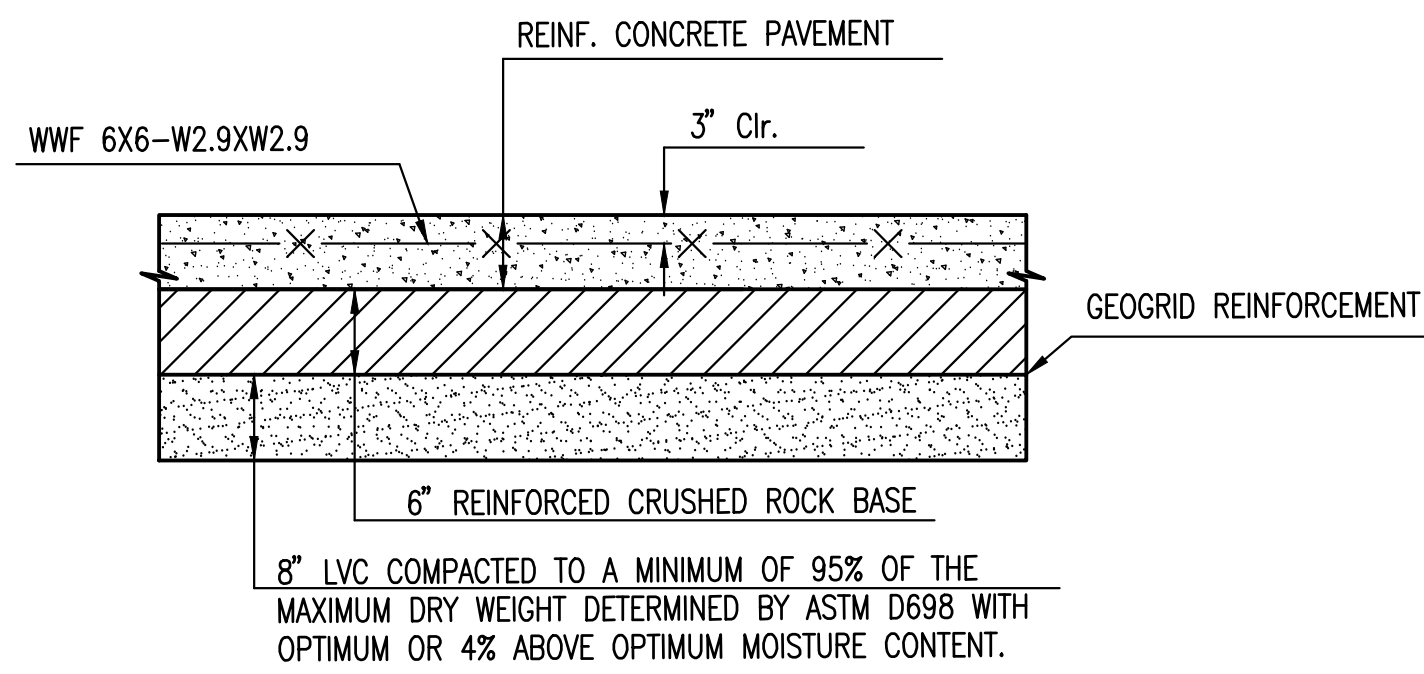
- IF, IN THE OPINION OF THE ENGINEER, THE MANHOLE SUBGRADE APPEARS UNSTABLE, THE CONTRACTOR WILL HAVE THE OPTION TO COMPACT SUBGRADE AS SHOWN OR INCREASE THE THICKNESS OF THE MANHOLE BASE AS DIRECTED BY THE ENGINEER.
- STEEL REINFORCING WILL BE REQUIRED IN ALL MANHOLE BASES.
- ALL MANHOLE CONSTRUCTION SHALL BE WATER TIGHT.
- TOP OF MANHOLE FLOOR SLAB SHALL BE AT LEAST 3 INCHES BELOW THE FLOW LINE OF THE OUTLET PIPE TO INSURE SUFFICIENT MINIMUM THICKNESS OF SHAPED INVERT.
- ALL PRECAST CONCRETE MANHOLE SECTIONS SHALL CONFORM TO THE LATEST REVISION OF ASTM C-478 AS MODIFIED BY THE SPECIFICATIONS.
- CONCRETE USED FOR MANHOLE CONSTRUCTION SHALL CONFORM TO CITY OF WICHITA SPECIFICATIONS FOR CONCRETE PAVEMENT MIX.
- PRECAST MANHOLES SHALL BE SET AT LEAST 4 INCHES INTO MANHOLE BASE.
- MANHOLES WITH PIPE SIZES 24" AND LARGER SHALL HAVE 5 FOOT INSIDE DIAMETER (MIN.)
- MANHOLES WITH PRECAST BASES MAY BE USED AT THE CONTRACTORS OPTION. THESE MANHOLES SHALL HAVE AN 8" MINIMUM BASE THICKNESS AND SHALL BE PLACED ON AN 8" MIN. CRUSHED ROCK BASE. PIPES SHALL BE ENCASED WITH CRUSHED ROCK TO AT LEAST 3 FEET FROM THE MANHOLE WALL.
- CONTRACTOR SHALL REMOVE LIFTING HOOKS AFTER INSTALLATION. RECESSES IN MANHOLE WALL SHALL BE GROUTED FLUSH TO THE MANHOLE WALL WITH HYDRAULIC CEMENT AFTER THE MANHOLE IS IN PLACE. LIFTING HOLES THRU THE MANHOLE WALL WILL NOT BE ACCEPTED.
- THE ENDS OF ALL PIPES IN MANHOLES SHALL BE CUT OFF FLUSH WITH THE INSIDE FACE OF THE MANHOLE WALL.
- MANHOLE INVERT SHALL BE SHAPED WITH 8 SACK SAND MIX CONCRETE TO CREATE FLOW CHANNELS AND TO INCREASE HYDRAULIC EFFICIENCY SUCH THAT THE MANHOLE WILL BE SELF CLEANING BETWEEN ALL INLET AND/OR OUTLET PIPES.
- MANHOLE FRAME AND COVER TO BE DEETER #1261, EJIW #1936-Z1, OR APPROVED EQUAL, SEE SW-303.
- FOR FLAT GRATED INLET APPLICATION, GRATE TO BE DEETER #1933, EJIW #1205 MDI, OR APPROVED EQUAL.
- FOR BEEHIVE GRATE APPLICATION, GRATE TO BE DEETER #4495, EJIW #120545, OR APPROVED EQUAL.

Sheet 08-00-2017, 1:18:30 PM, by: GAGE SCHLEPER
 Plot: Scale: 1:1, 08-14-2017 2:58:47 PM, by: KLEISS, DEKAT
 U:\Wichita-Civil\2017\1708645\000\Misc\Drawings\1708645-000-005-PRECAST MANHOLE

REVISED: MARCH 2015

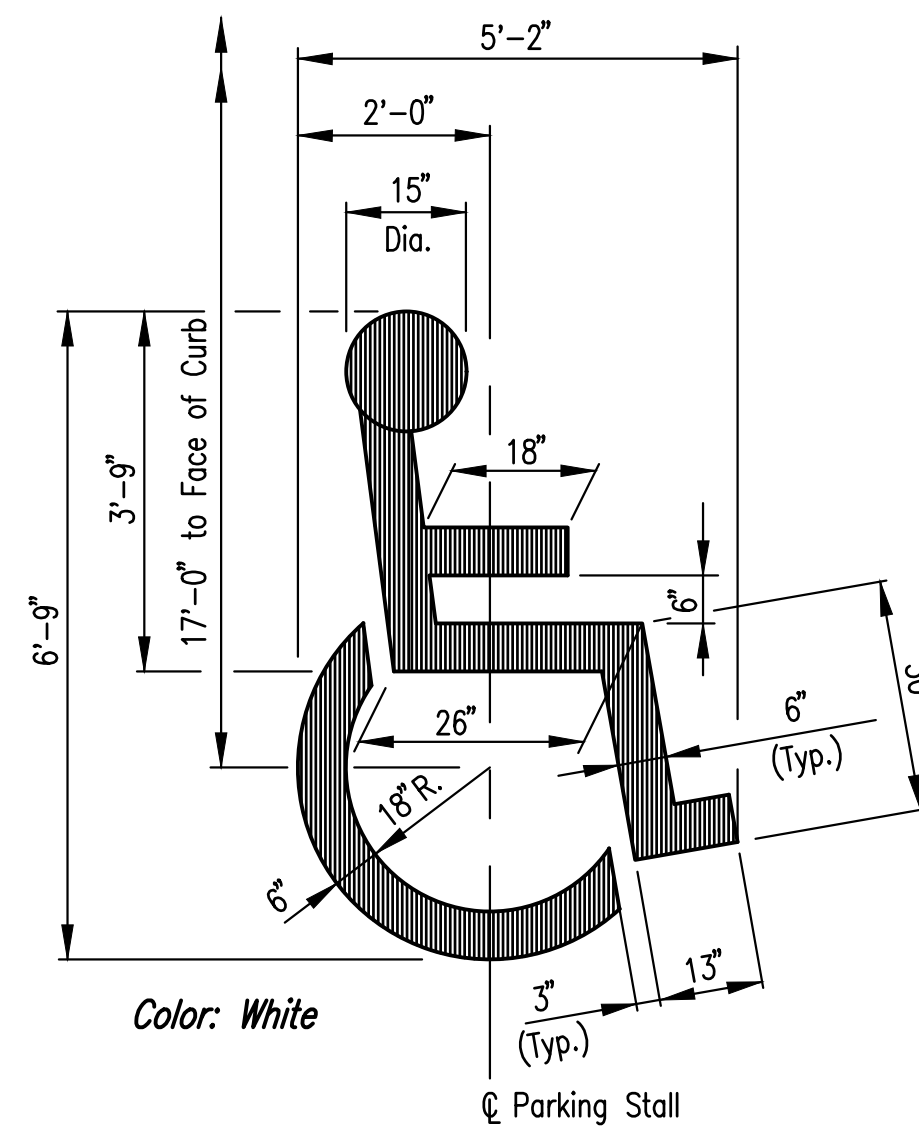


PRECAST CONCRETE MANHOLE (STORM SEWER)		
CITY ENGINEER GARY JANZEN, P.E.		
PROJECT NUMBER 0471 PPD	OCA NUMBER (133119)	DATE JULY 2017
CITY ENGINEER'S OFFICE CITY HALL - SEVENTH FLOOR 455 NORTH MAIN STREET WICHITA, KANSAS 67202-1620 (316) 268-4501		SHEET 5 of 6



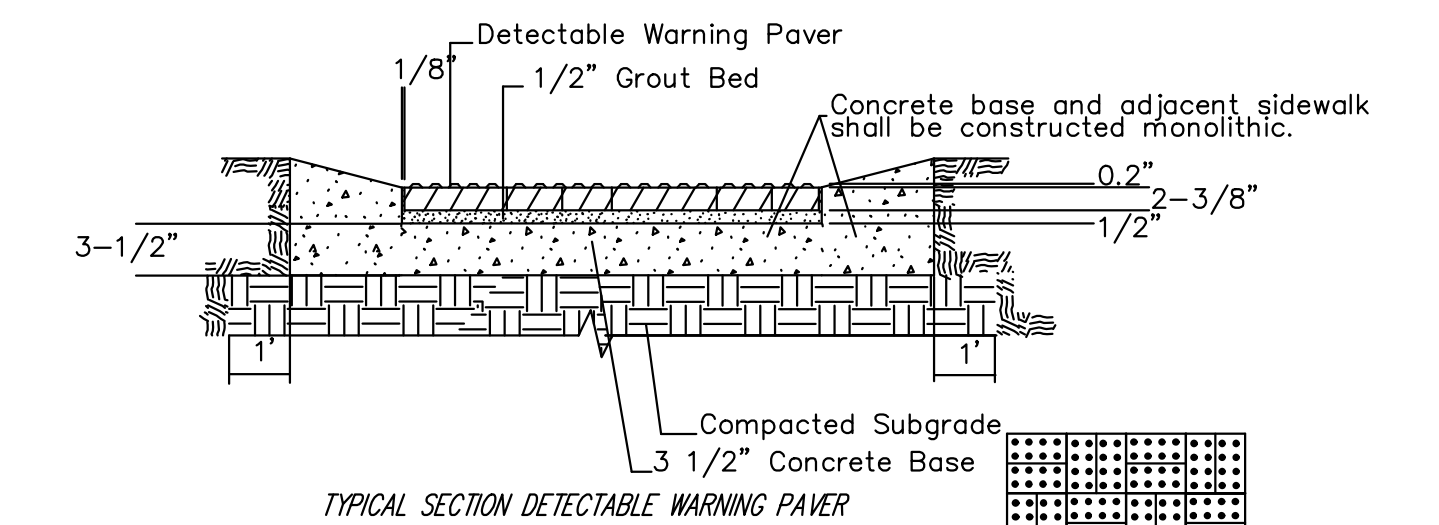
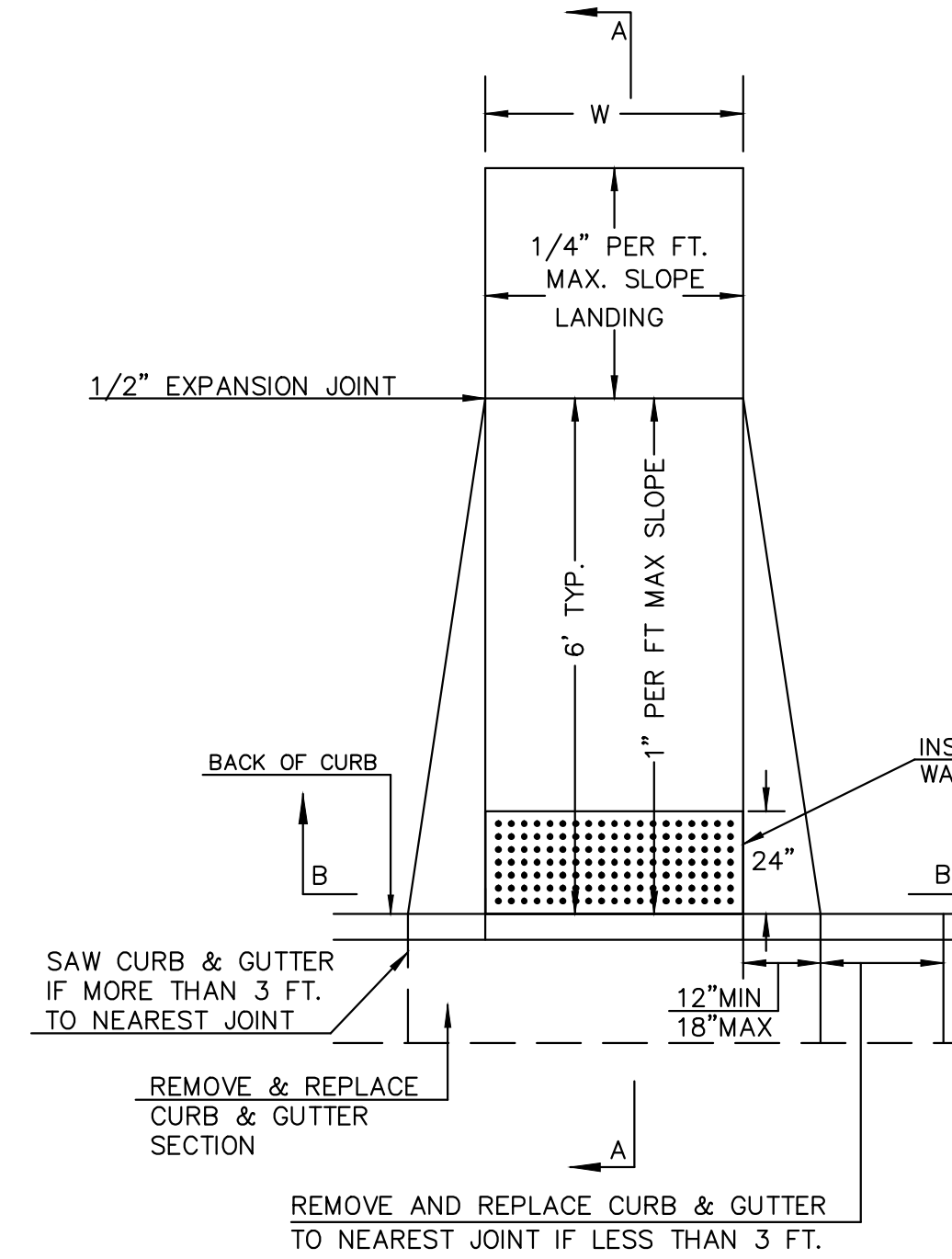
- NOTES:
1. STABILIZED SUBBASE SHALL BE EXTENDED TO 1' BEYOND THE LIMITS OF ALL PAVING, EXCEPT WHERE ADJACENT TO EXISTING PAVING.
 2. REINFORCED CONCRETE PAVEMENT THICKNESS SHALL MATCH EXISTING OR 6", WHICHEVER IS GREATER.

REINFORCED CONCRETE PAVEMENT
TYPICAL SECTION



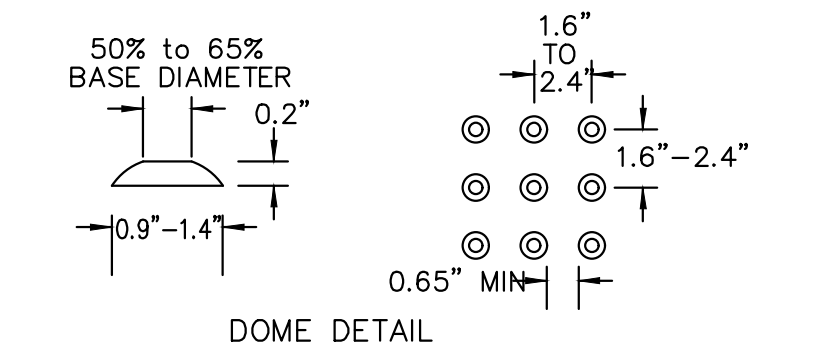
ADA PARKING SYMBOL

W= 4'0" FOR STANDARD RAMP
W= 5'0" FOR RAMPS AT SCHOOL CROSSWALKS
(OR TO MATCH EXISTING)

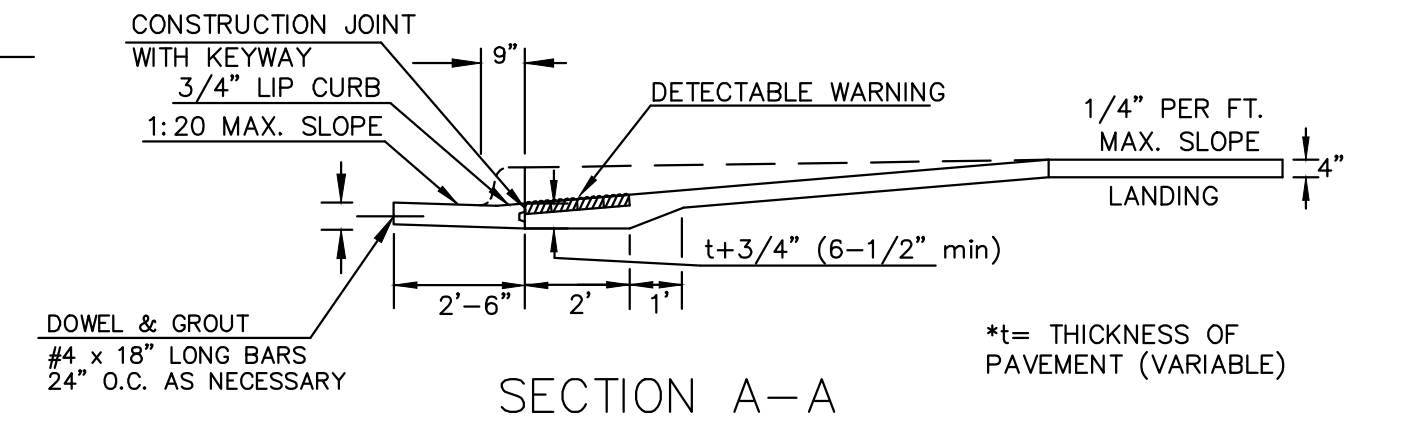


NOTE: RAMPS TO COMPLY WITH LATEST ADAAG GUIDELINES. PAVESTONE DETECTABLE WARNING PAVERS (OR AN APPROVED EQUAL) SHALL BE USED IN ALL WHEELCHAIR RAMPS. THE RED PAVER SHALL BE INSTALLED USING A BASKET WEAVE/PARQUET PATTERN. OTHER PATTERNS MAY BE USED WITH APPROVAL OF ENGINEER. SAND FILL JOINTS. ALIGN DOMES IN THE DIRECTION OF PEDESTRIAN TRAVEL.

SECTION B-B

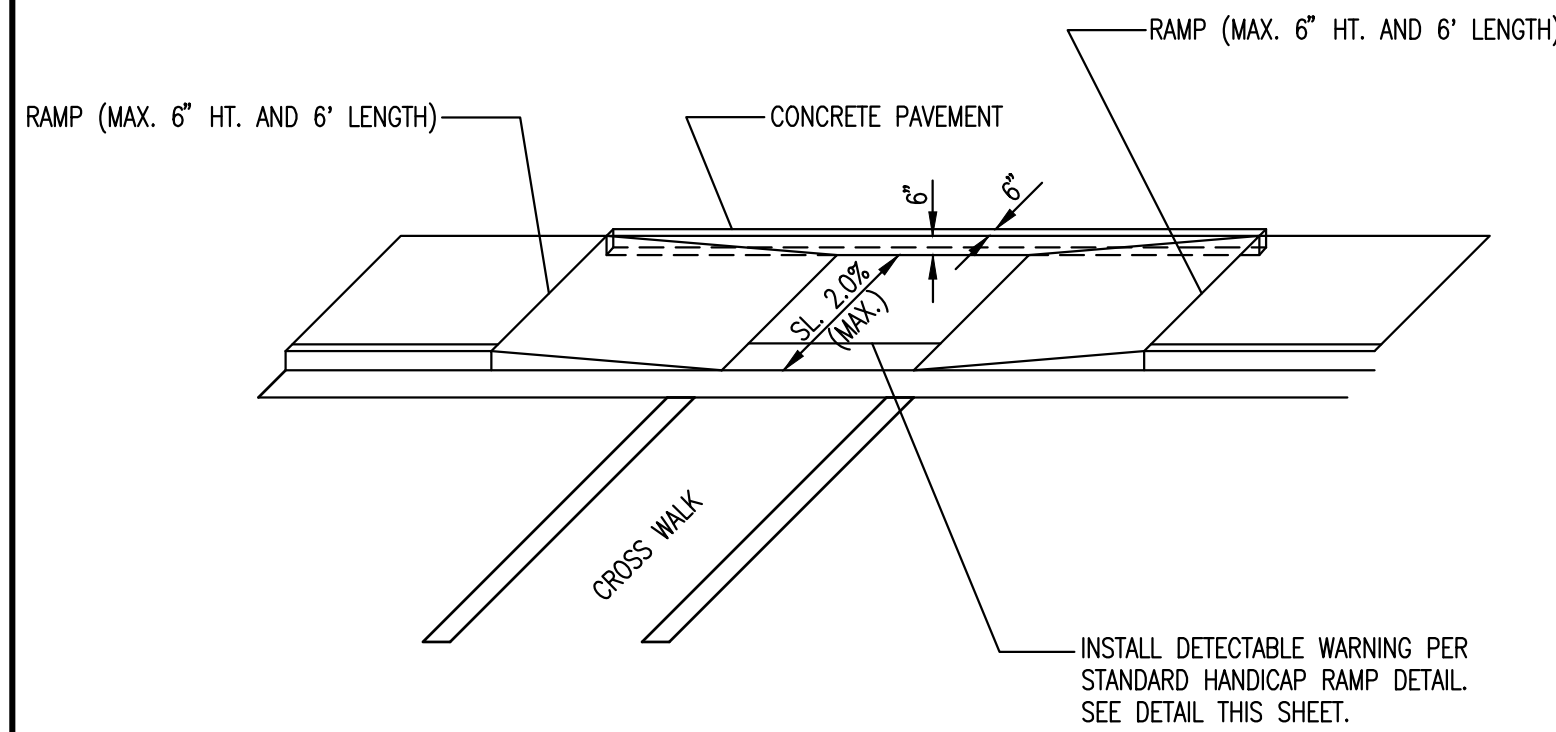


DOMES DETAIL

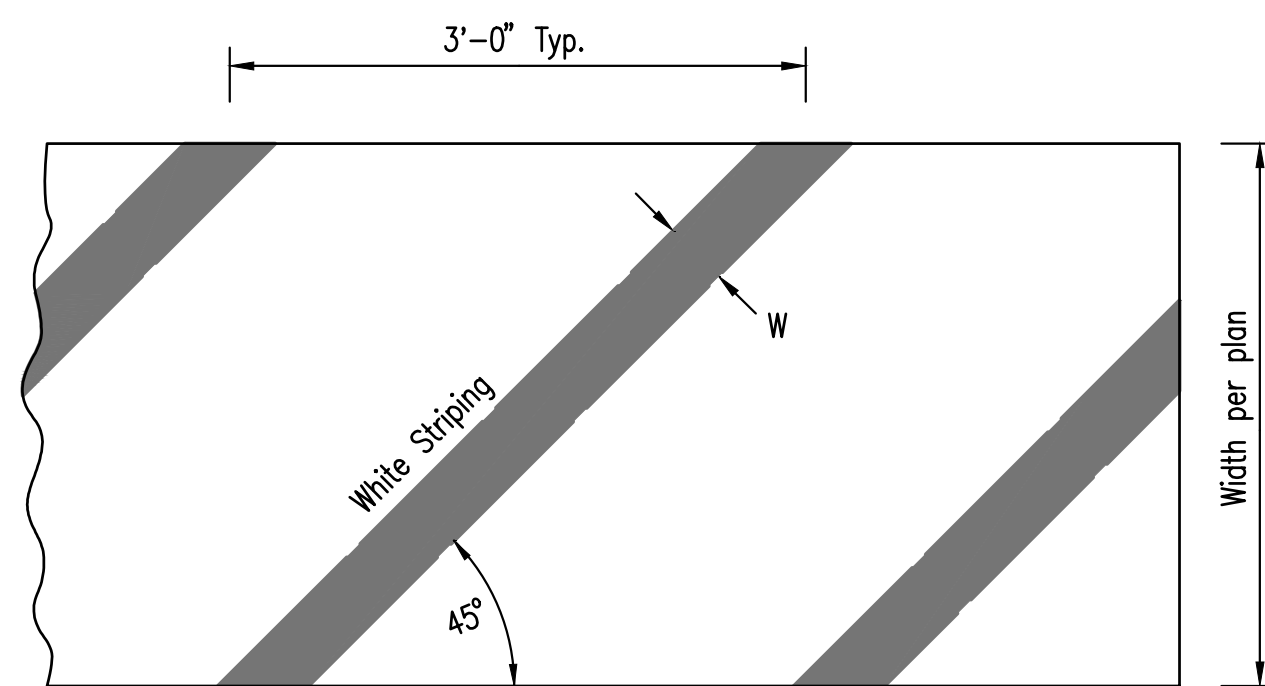


(TYPE A)
STANDARD WHEELCHAIR RAMP
WITH DETECTABLE WARNING
CONSTRUCTION DETAIL FOR STREETS
WITH COMBINED CURB & GUTTER

AUGUST 4, 2003

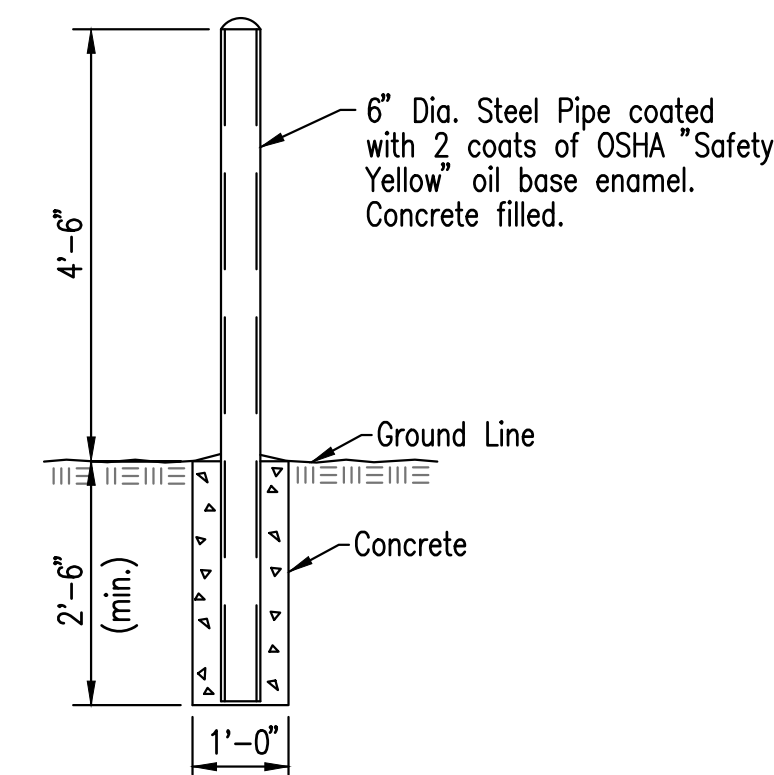


SECTION B-B
DOUBLE RAMP WITH LANDING

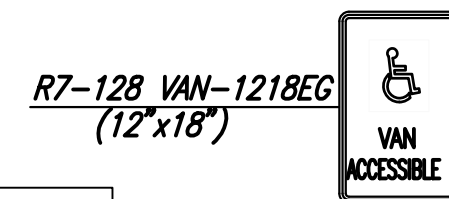


W = 4", Parking Areas
NOTE: PARKING STALL STRIPING ON NEW ASPHALT TO BE 4" WIDE WHITE STRIPE.

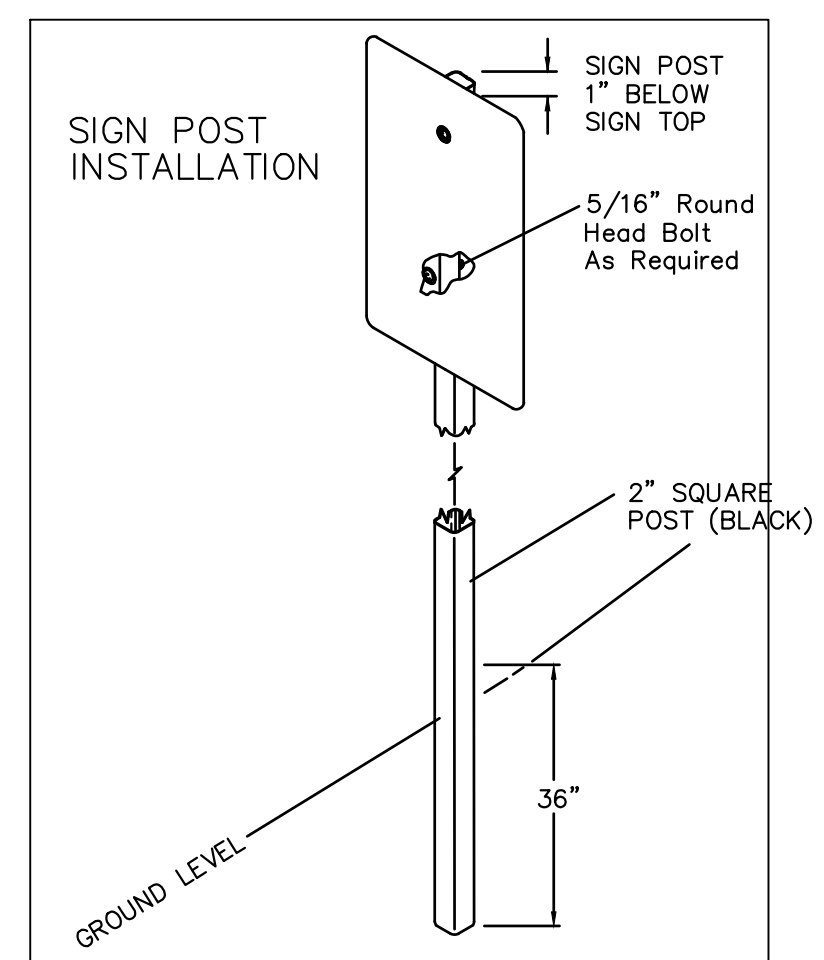
PAINT STRIPE AND STRIPING CROSS HATCH DETAIL



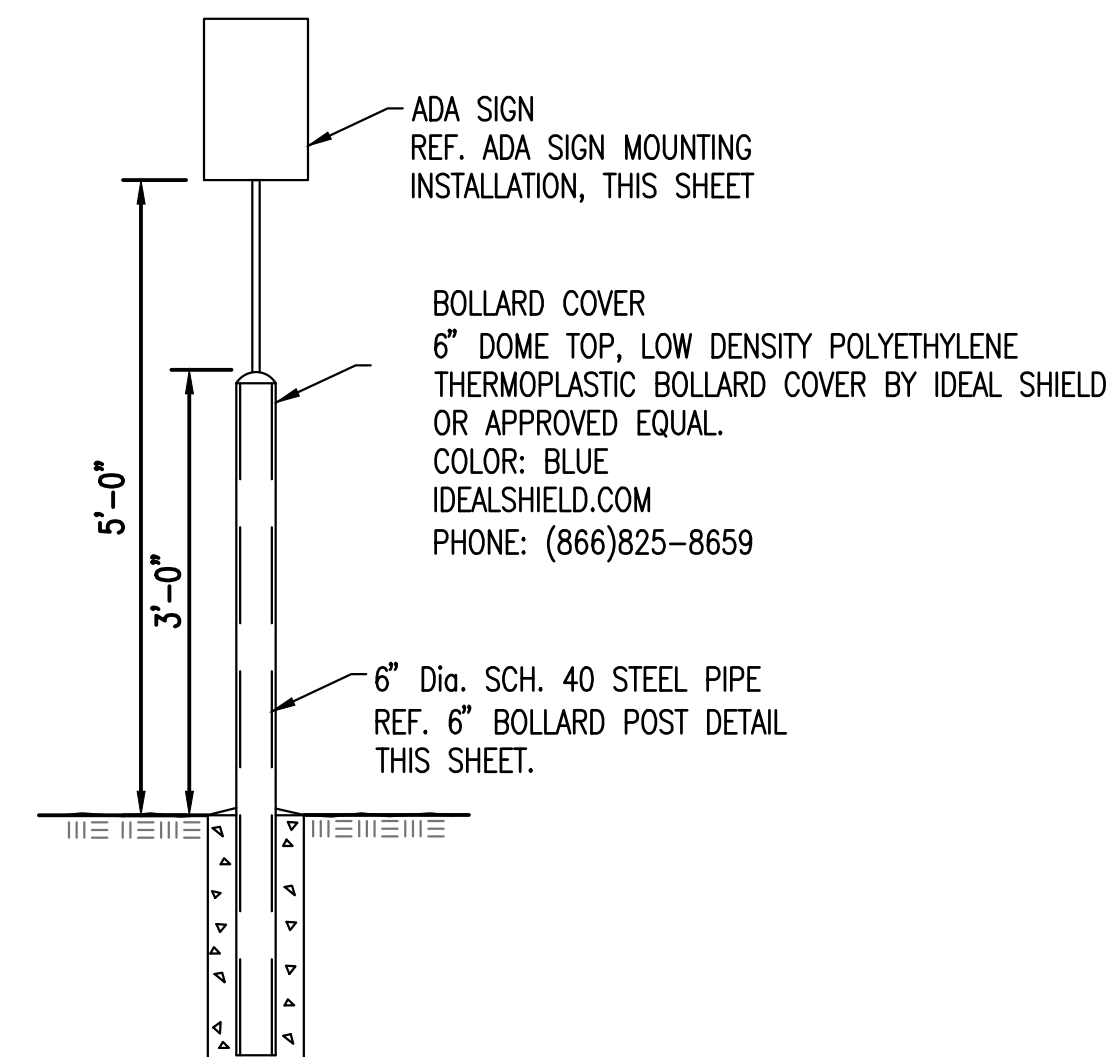
PIPE BOLLARD DETAIL



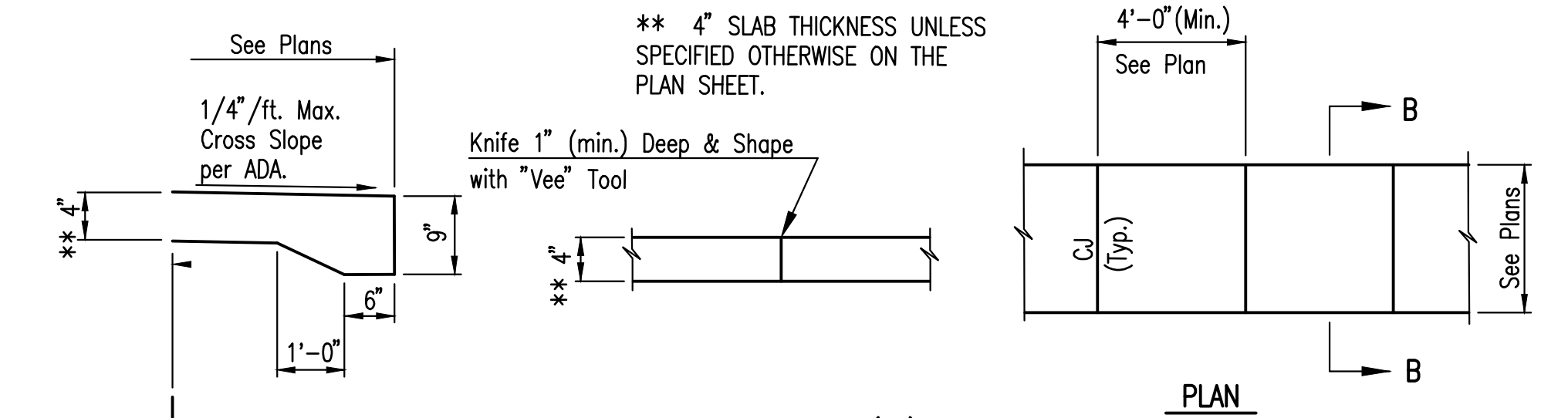
SIGN
(PICTURED)



ADA SIGN MOUNTING INSTALLATION

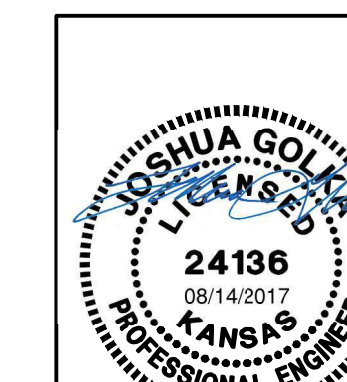


6" BOLLARD WITH ADA SIGN



CONTRACTION JOINT (CJ)
Note: No sawn contraction joints will be allowed

CONCRETE WALK DETAILS



No.	Revision	By	Date
STORM SEWER IMPROVEMENTS TO SERVE WESLEY MEDICAL CENTER MISCELLANEOUS DETAILS			
GARY JANZEN, P.E. - CITY ENGINEER CITY OF WICHITA PROJECT NO. 0471 PPD (133119)			
PROFESSIONAL ENGINEERING CONSULTANTS, P.A. 303 SOUTH TOPEKA WICHITA, KS 67202 316-262-2691 www.pec1.com			
Designed by	JAG, GAS	Job No.	35-170645-000
Drawn by	GAS	Date	JULY 2017
			Sht. 6 of 6