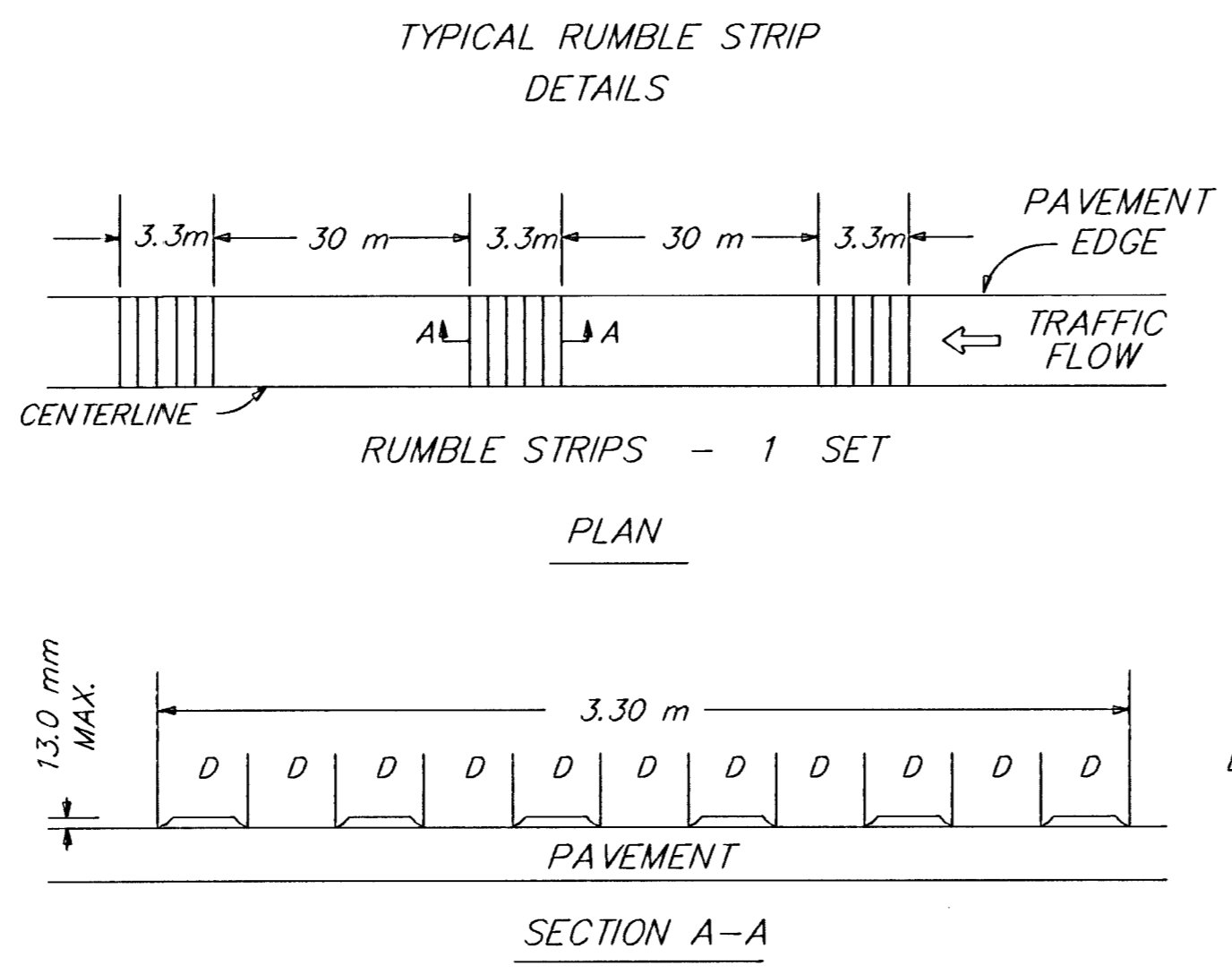
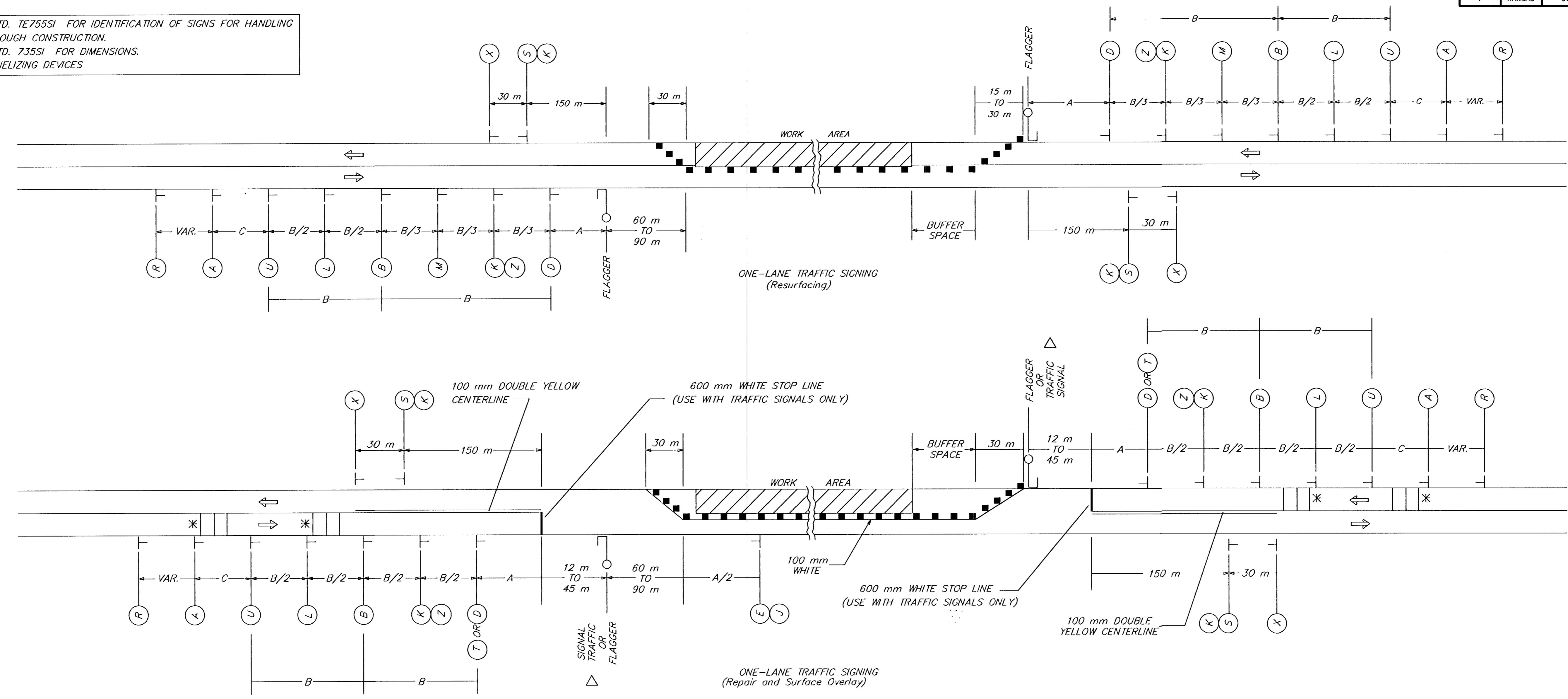


FHWA REGION NO.	STATE	PROJECT NUMBER	FISCAL YEAR	SHEET NUMBER	TOTAL SHEETS
7	KANSAS	87N-0080-01	1997	111	162

REFER TO STD. T755SI FOR IDENTIFICATION OF SIGNS FOR HANDLING TRAFFIC THROUGH CONSTRUCTION.
REFER TO STD. 735SI FOR DIMENSIONS.
■ = CHANNELIZING DEVICES

BY	DATE
REFERENCES NOTED	
REFERENCES CHECKED	



* TWO SETS OF RUMBLE STRIPS SHALL BE PLACED: ONE SET BETWEEN SIGNS (A) AND (U), AND ONE SET BETWEEN SIGNS (B) AND (L). MATERIALS FOR THE RUMBLE STRIPS SHALL BE FURNISHED BY K.D.O.T. TEMPLATE, HAULING, INSTALLATION AND REMOVAL ARE TO BE BY THE CONTRACTOR. PAYMENT SHALL BE SUBSIDIARY TO OTHER BID ITEMS.

△ REFER TO T804SI AND T805SI FOR ADDITIONAL TEMPORARY TRAFFIC SIGNAL DETAILS.

IT IS INTENDED THAT TEMPORARY SIGNAL POLES BE LOCATED BASED ON THE MAXIMUM BUFFER SPACE EACH DIRECTION. THIS WILL EXTEND THE WORK AREA ON THE DOWNSTREAM SIDE OF THE CLOSED LANE.

3					
2	10/10/96	ADDED M4-20 AND END OF WORK ZONE R2-1 SIGNS	WPR	NAB	
1		ADDED SIGNAL POLE NOTE	TCP	NAB	
NO.	DATE	REVISION	BY	APP'D	

KANSAS DEPARTMENT OF TRANSPORTATION
TYPICAL TRAFFIC CONTROL
TWO-LANE HIGHWAY
ONE LANE CLOSED
TE743SI 7/1/94

DESIGNED	QUANTITIES	APP'D	Nelda A. Buckley
DESIGN CK.	DETAIL CK.	QUAN. CK.	TRACE CK.