

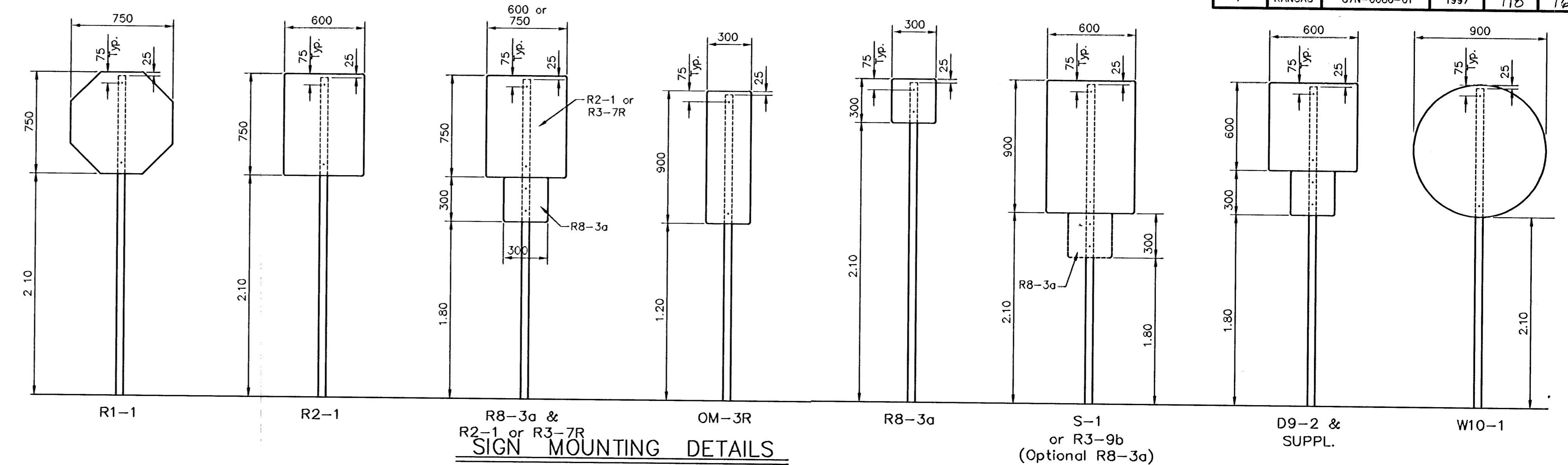
TRAFFIC CONTROL SIGNS & SIGN POSTS

FHWA REGION NO.	STATE	PROJECT NUMBER	FISCAL YEAR	SHEET NUMBER	TOTAL SHEETS
7	KANSAS	87N-0080-01	1997	118	162

STATION	LOCATION FROM C	SIGN POST LENGTH															
		R1-1	S-1	R2-1	R3-7R	①	②	R3-9b	D9-2	Suppl.	OM-3R	W10-1	R4-7	R1-2	R3-1L	OM-1	
0+043	9.5 Rt.			1													3 150
0+067	9.7 Rt.							1									3 300
0+100 **	9.6 Rt.								1	1							3 000
0+489 *	6.0 Rt.	1															3 150
0+515 *	6.5 Lt.	1															3 150
0+245	5.3 Lt.			1													3 150
0+265	5.3 Lt.																3 150
0+328	8.2 Lt.																2 450
0+350 **	8.2 Lt.							1									3 000
0+478 * **	7.0 Rt.																3 000
0+410	9.9 Rt.			1													3 150
0+452	9.6 Rt.								1								3 300
0+469 **	9.6 Rt.									1	1						3 000
0+489 *	6.0 Rt.	1															3 150
0+515 *	6.6 Lt.	1															3 150
0+694	9.6 Rt.																3 300
0+787	4.8 Lt.								1								3 300
0+841	9.5 Rt.									1							3 300
0+871 **	6.9 Rt.										1	1					3 000
0+510 *	8.0 Lt.	1															3 150
1+007	7.1 Lt.																3 300
0+490 *	6.5 Rt.	1															3 150
0+511 *	7.0 Lt.	1															3 150
1+038	7.0 Rt.																3 300
0+510 *	7.9 Lt.	1															3 150
1+161.5	7.0 Rt.																3 300
1+185	6.9 Lt.																3 300
0+510 *	7.9 Lt.	1															3 150
1+254	7.0 Rt.																3 300
1+266	7.0 Lt.																3 300
0+513 *	6.3 Lt.	1															3 300
1+400	6.9 Lt.																3 150
0+490 *	7.8 Rt.	1															3 300
0+513 *	7.0 Lt.	1															3 150
1+472	1.3 Rt.												1				3 150
1+504	7.9 Lt.														1		3 150
1+513	4.3 Rt.															1	3 000

* Side Street Stationing

STATION	LOCATION FROM C	R1-1	S-1	R2-1	R3-7R	①	②	R3-9b	D9-2	Suppl.	OM-3R	W10-1	R4-7	R1-2	R3-1L	OM-1	SIGN POST LENGTH
0+043	9.5 Rt.			1													3 150
0+067	9.7 Rt.							1									3 300
0+100 **	9.6 Rt.								1	1							3 000
0+489 *	6.0 Rt.	1															3 150
0+515 *	6.5 Lt.	1															3 150
0+245	5.3 Lt.			1													3 150
0+265	5.3 Lt.																3 150
0+328	8.2 Lt.																2 450
0+350 **	8.2 Lt.							1									3 000
0+478 * **	7.0 Rt.																3 000
0+410	9.9 Rt.			1													3 150
0+452	9.6 Rt.								1								3 300
0+469 **	9.6 Rt.									1	1						3 000
0+489 *	6.0 Rt.	1															3 150
0+515 *	6.6 Lt.	1															3 150
0+694	9.6 Rt.																3 300
0+787	4.8 Lt.								1								3 300
0+841	9.5 Rt.									1							3 300
0+871 **	6.9 Rt.										1	1					3 000
0+510 *	8.0 Lt.	1															3 150
1+007	7.1 Lt.																3 300
0+490 *	6.5 Rt.	1															3 150
0+511 *	7.0 Lt.	1															3 150
1+038	7.0 Rt.																3 300
0+510 *	7.9 Lt.	1															3 150
1+161.5	7.0 Rt.																3 300
1+185	6.9 Lt.																3 300
0+510 *	7.9 Lt.	1															3 150
1+254	7.0 Rt.																3 300
1+266	7.0 Lt.																3 300
0+513 *	6.3 Lt.	1															3 300
1+400	6.9 Lt.																3 150
0+490 *	7.8 Rt.	1															3 300
0+513 *	7.0 Lt.	1															3 150
1+472	1.3 Rt.													1			3 150
1+504	7.9 Lt.														1		3 150
1+513	4.3 Rt.															1	3 000
TOTAL		12	3		2		3	3	1	2	1	1	1	1	1		108.45
																	22.05



SIGN POST LENGTH SUMMARY

BREAKAWAY SIGN POST : 45 mm x 45 mm x VARIES

LENGTH	TOTAL # POSTS
60 mm x 60 mm x 450 mm	36
50 mm x 50 mm x 900 mm	36
45 mm x 45 mm x 3 000 mm	6
45 mm x 45 mm x 3 150 mm	17
45 mm x 45 mm x 3 300 mm	13

U-CHANNEL

LENGTH	TOTAL # POSTS
STUBS 1.0 m	1
POSTS 2.45 m	1
POSTS 2.75 m	1
POSTS 2.90 m	1
POSTS 3.35M	1
STRAPS & BOLTS	1

SIGN DESCRIPTION

CLASS.	TYPE	PROCESS	SIZE	AREA
R1-1	STOP SIGN	REV. SCREEN	750 mm x 750 mm	0.48 Sq. M.
R3-7R	RT. LANE MUST TURN RT.	DIR. SCREEN	750 mm x 750 mm	0.56 Sq. M.
R2-1	SPEED LIMIT	DIR. SCREEN	600 mm x 750 mm	0.45 Sq. M.
①	SNOW EMERGENCY ROUTE	DIR. SCREEN	300 mm x 450 mm	0.14 Sq. M.
②	NO PARKING/BUS STOP	DIR. SCREEN	300 mm x 600 mm	0.18 Sq. M.
S-1	NO LT. TURN AT KELLOGG	DIR. SCREEN	600 mm x 900 mm	0.54 Sq. M.
R3-9b	TWO WAY LEFT TURN ONLY	DIR. SCREEN	600 mm x 900 mm	0.54 Sq. M.
D9-2	HOSPITAL	DIR. SCREEN	600 mm x 600 mm	0.36 Sq. M.
SUPPL	SUPPLEMENTAL "I"	DIR. SCREEN	300 mm x 300 mm	0.09 Sq. M.
OM-3R	OBJECT MARKER	DIR. SCREEN	300 mm x 900 mm	0.27 Sq. M.
W10-1	RAILROAD CROSSING	DIR. SCREEN	900 mm Dia.	0.64 Sq. M.
R4-7	KEEP RIGHT	DIR. SCREEN	600 mm x 750 mm	0.45 Sq. M.
R1-2	YIELD	REV. SCREEN	900 x 900 x 900	0.35 Sq. M.
R3-1L	NO LEFT TURN	DIR. SCREEN	600 mm x 600 mm	0.36 Sq. M.
OM-1	OBJECT MARKER	DIR. SCREEN	450 mm x 450 mm	0.20 Sq. M.

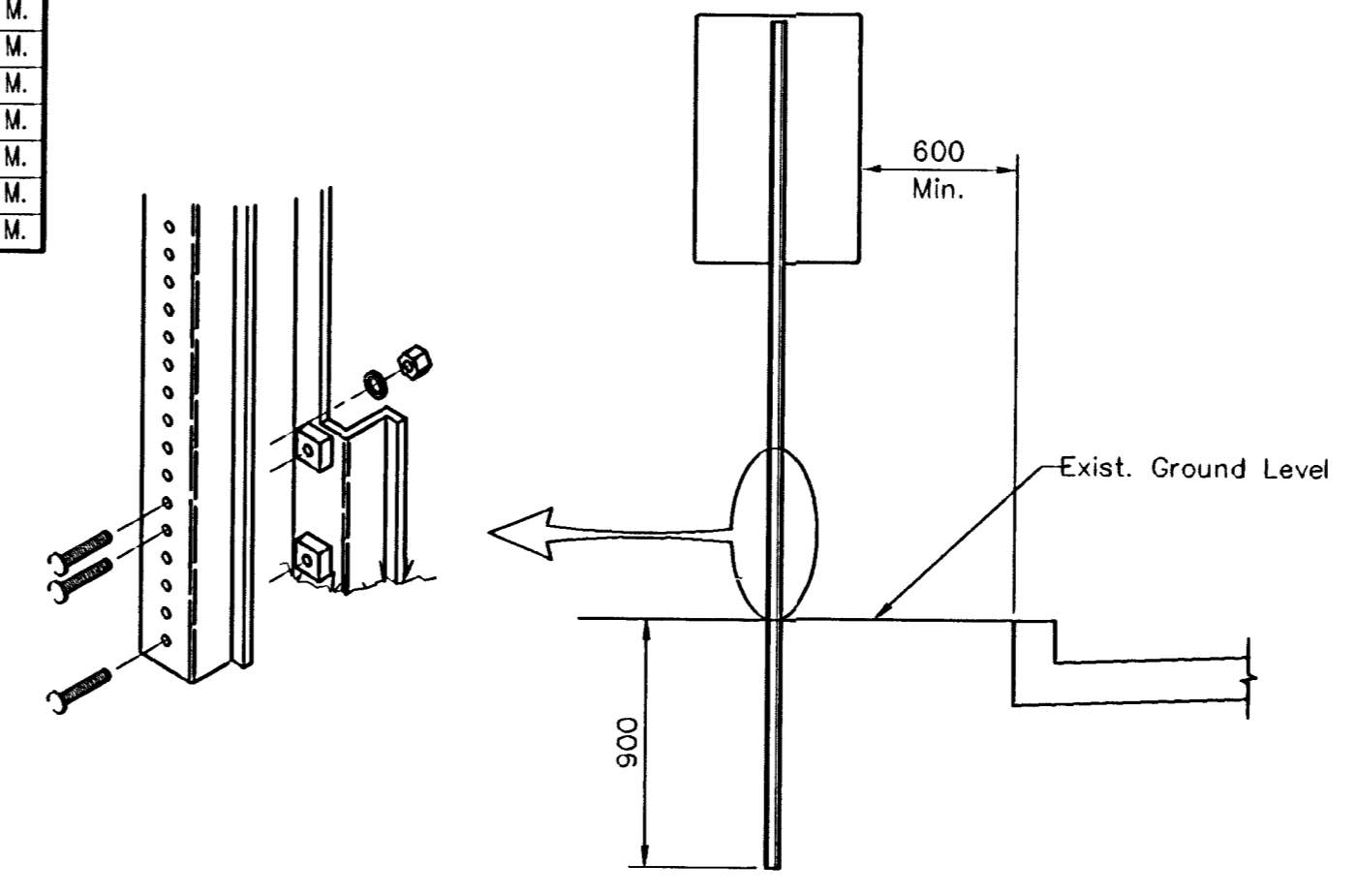
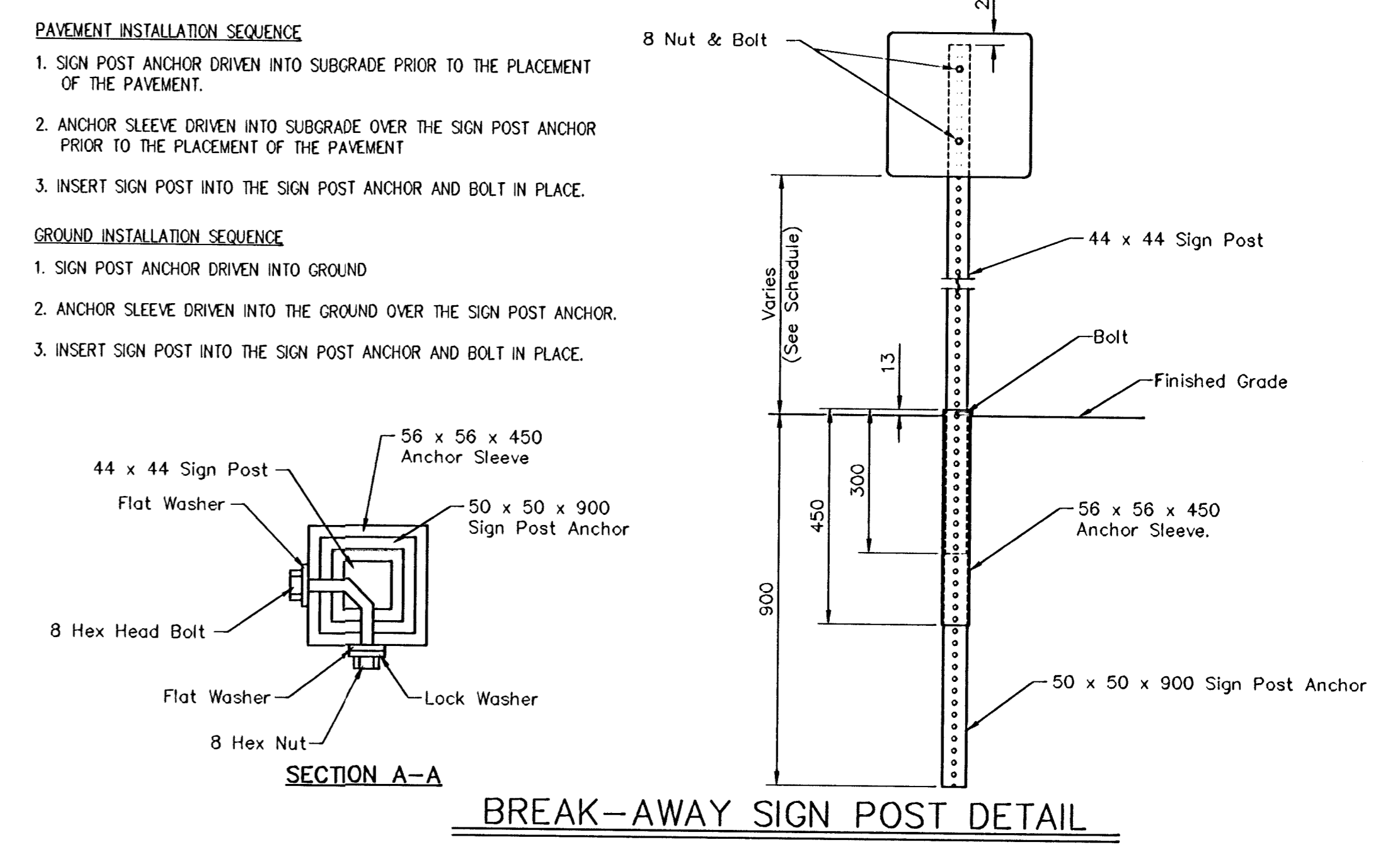
RECAPITULATION OF MATERIALS

ITEMS	TOTAL	UNIT
SIGN FACE, HIGH INTENSITY HA (REFLECTIVE SHEETING)	11.64	S.M.
STEEL "U" CHANNEL SIGN POST	3.45	Meter
BREAKAWAY SIGN POST, 45 mm x 45 mm x VARIES	99.45	Meter
BREAKAWAY ANCHORSLEEVE, 60 mm x 60 mm x 450 mm	16.20	Meter
BREAKAWAY SIGN POST ANCHOR, 50 mm x 50 mm x 900 mm	32.40	Meter

NOTE: D9-2, SUPPL., AND BUS STOP SIGN QUANTITIES NOT INCLUDED. (REMOVE & RESET THESE SIGNS)

RECAPITULATION OF MATERIALS

ITEMS	TOTAL	UNIT
SIGNING	LUMP SUM	L.S.



NOTES:

IN ALL INSTALLATIONS THE FIRST HOLE ABOVE THE FINISHED GRADE LEVEL IN ALL THREE UNITS MUST BE IN LINE FOR INSERTION OF THE BOLT.

ALL BOLTS AND NUTS FOR FASTENING THE SIGNS AND SIGN POST ASSEMBLY SHALL COMPLY WITH SECTION 1614 AND ALL WASHERS SHALL COMPLY WITH SECTION 1614 OF THE STANDARD SPECIFICATIONS FOR STATE ROAD AND BRIDGE CONSTRUCTION (1980 EDITION) AND SHALL BE SUBSIDIARY ITEM.

ALL LETTER, NUMBER & SYMBOL SIZES, SPACING & COLORS AND SIGN COLORS SHALL CONFORM TO THE CURRENT "MANUAL ON UNIFORM TRAFFIC CONTROL DEVICES."

ALL SIGN MATERIALS TO BE 0.080" ALUMINUM.

THE CITY OF WICHITA

SIGNING DETAILS

M. E. LINDEBAK P.E. - CITY ENGINEER

CITY ENGINEER'S OFFICE
408 NORTH WALKER STREET
WICHITA, KANSAS 67202
(316) 268-4174 FAX

PROJECT NUMBER: _____ INDEX CODE: _____

DATE: MAR 96 SHEET 118 OF 162