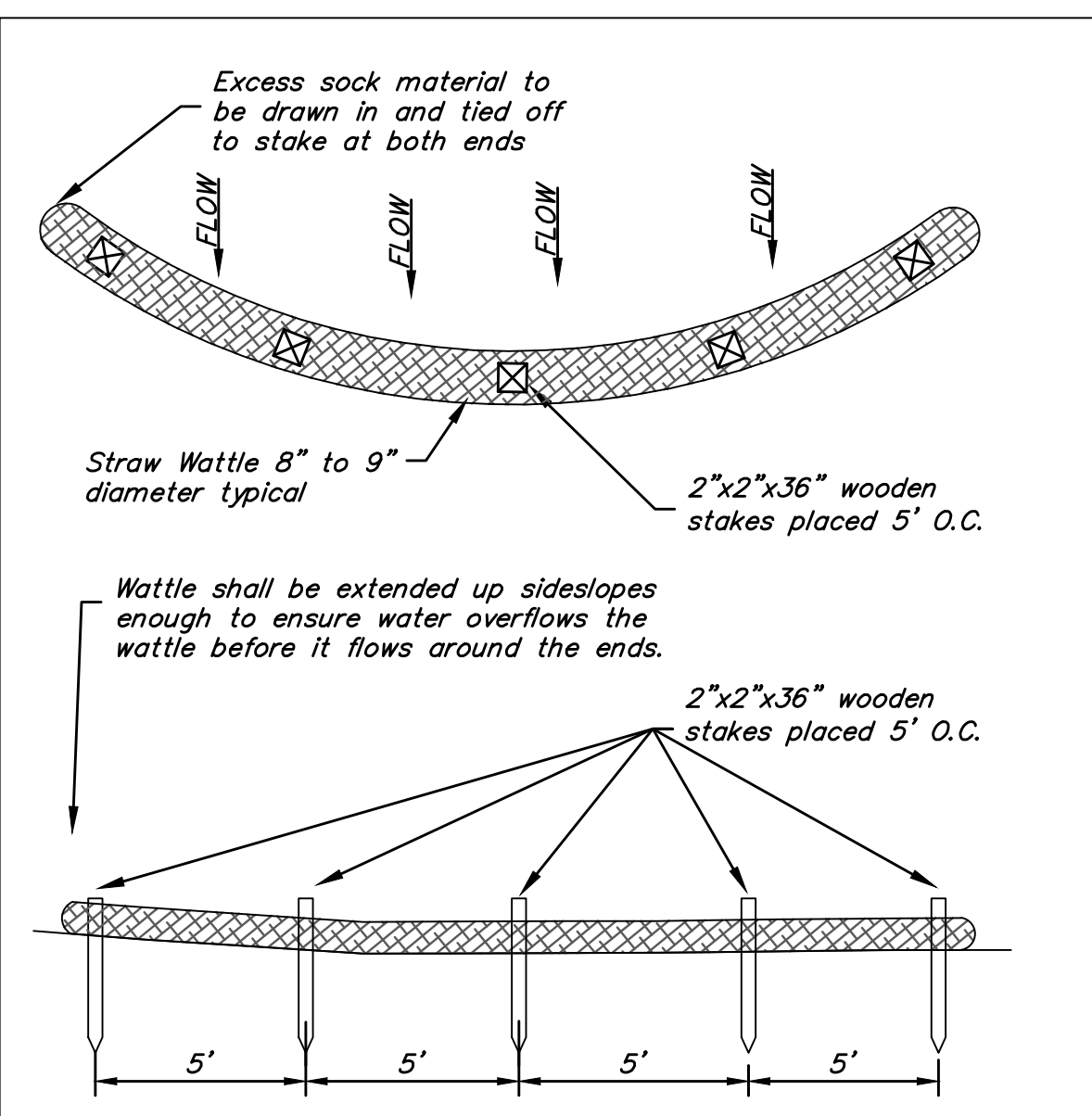
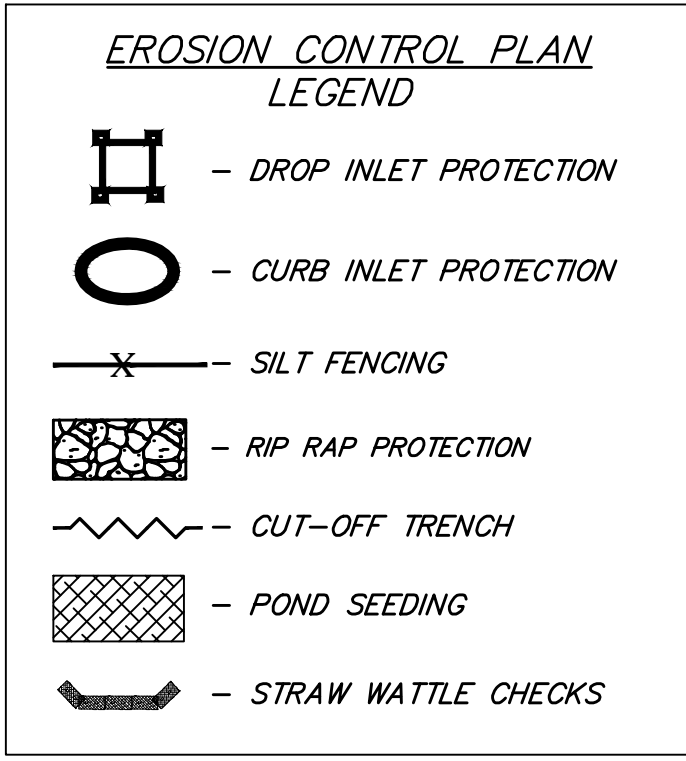


BENCHMARKS:
BM #1: City of Wichita Benchmark Disk at South End of Hubguard on the SW Cor. of R.C.B.C., West Side of Rock Road, 706' North-Northwest of the Northwest corner of Lot 44, Block A, Rocky Ford Addition
 Elev. = 1367.92 NAVD88

BM #2: "□" on Fence Footing under warning US Airforce Installation Sign West of Rock Road, 400' N. of W₂ Cor.
 Elev. = 1377.45 NAVD88

BM #3: "□" on Northeast Cor. Headwall RCP. East of Rock Road and South of Arnold Blvd.
 Elev. = 1376.10 NAVD88

BM #4: "□" on Top of Curb by Fire Hydrant. South of Concrete Drive at 2800 S. Rock Road.
 Elev. = 1379.84 NAVD88



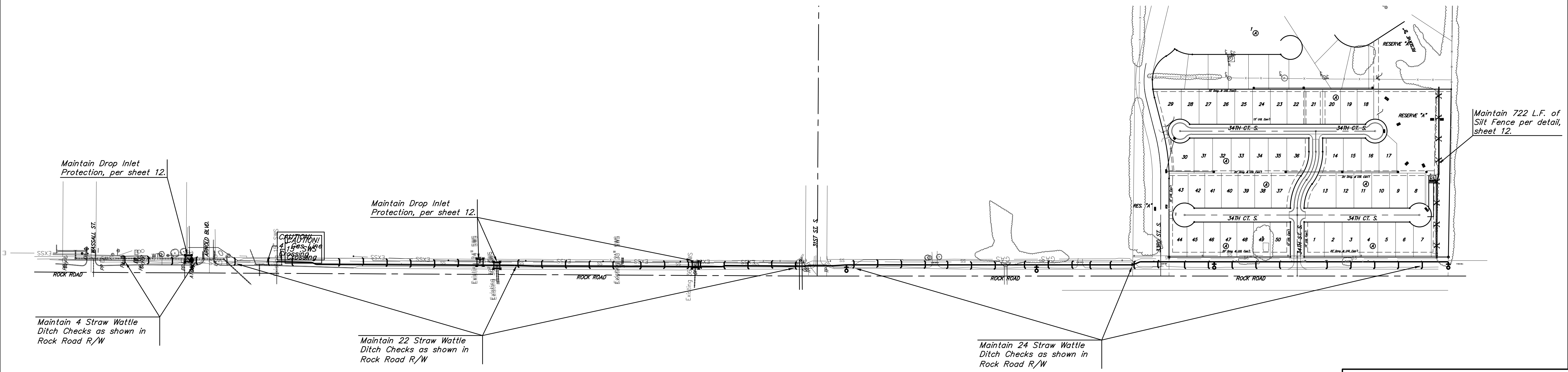
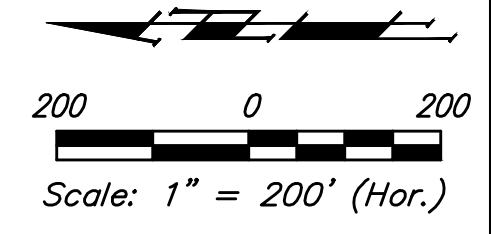
STRAW WATTLE DETAIL


- NOTES:**
- All material to meet manufacturer specifications.
 - Ditch Check should be used in areas that drain 10 acres or less.
 - Sediment should be removed from behind check dam once the accumulated height has reached 1/2 height of the check dam.
 - Check dam can be direct seeded at the time of installation.

EROSION CONTROL MEASURE	MAINTAIN
CONSTRUCTION ENTRANCE (EA)	1
SILT FENCE (LF)	722
DROP INLET PROTECTION (EA)	4
STRAW WATTLE DITCH CHECK (EA)	50

NOTES:

- Contractor shall make sure all erosion control is in place before project is accepted. This plan represents the minimum standard. Any additional erosion control measures shall be installed by the Contractor as needed.
- All areas disturbed during construction shall be seeded, mulched, and fertilized as per Cover Sheet General Notes.





Baughman

Rocky Ford Addition
EROSION CONTROL PLAN
 Water Distribution System

Baughman Company, P.A. 315 Ellis St. Wichita, KS 67211 P 316-262-7271 F 316-262-0149 ENGINEERING SURVEYING PLANNING LANDSCAPE ARCHITECTURE	
PROJECT NUMBER	DESIGN: DMV DRAWN: DHL
REVISIONS:	APPROVED: DATE: 10/29/17
	SCALE: Noted SHEET: 10 OF 17

