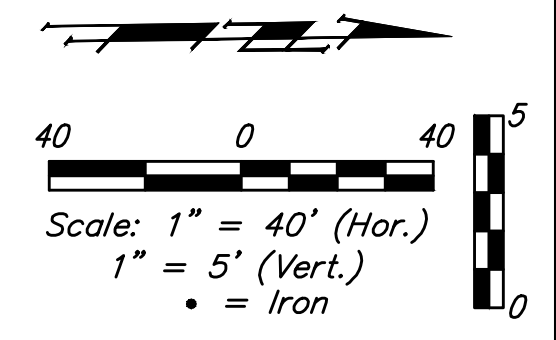
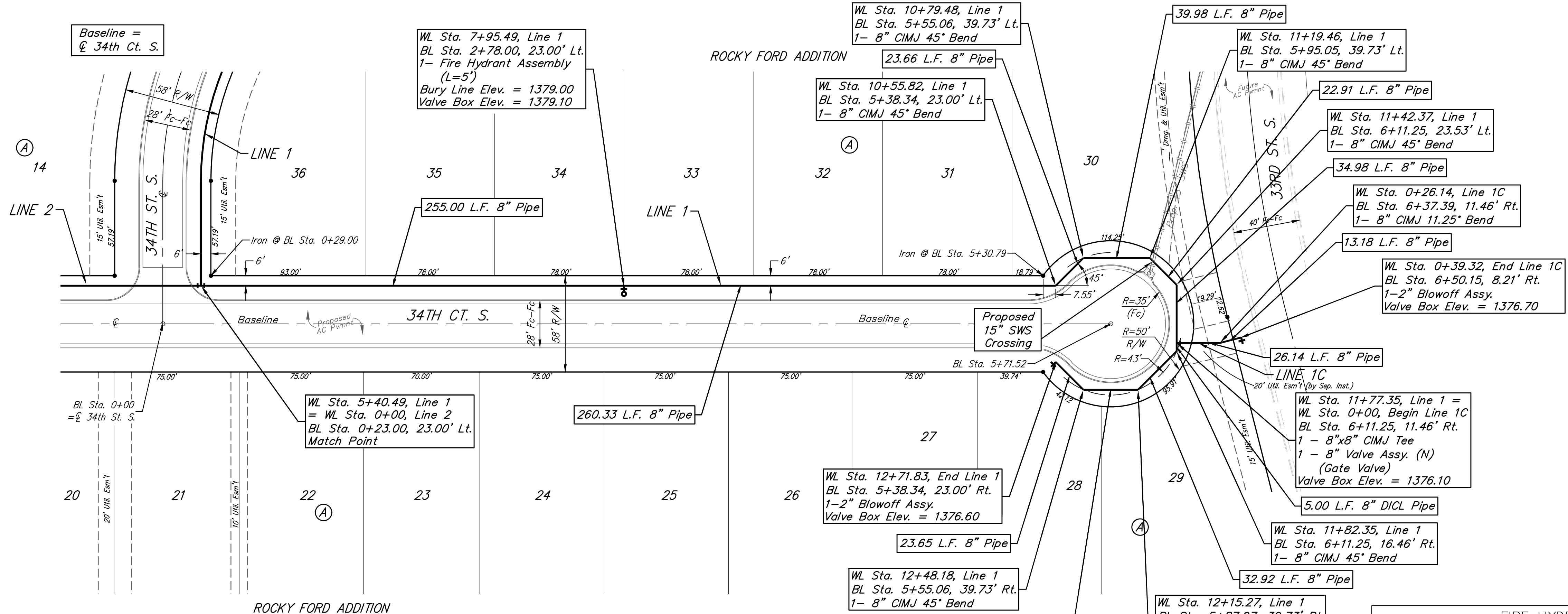
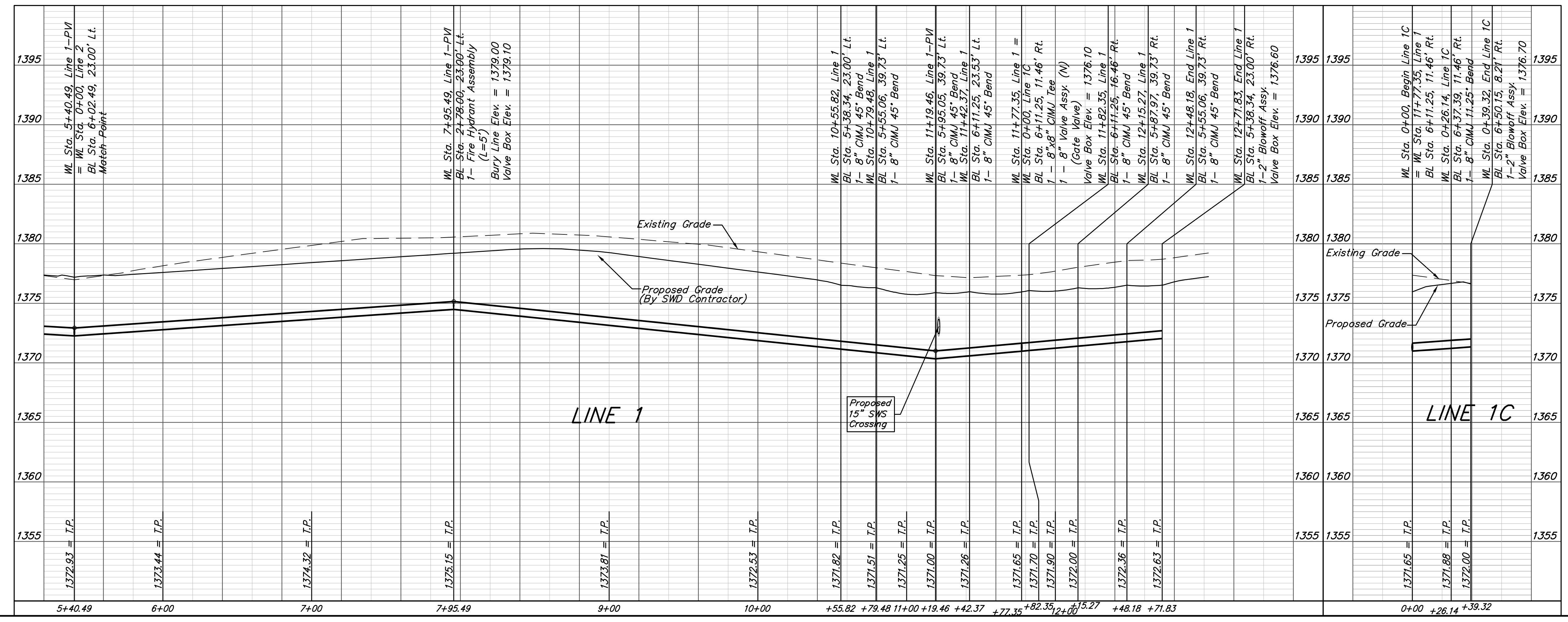


**BENCHMARKS:**  
 BM #1: City of Wichita Benchmark Disk at South End of Hubguard on the SW Cor. of R.C.B.C, West Side of Rock Road, 706' North-Northwest of the Northwest Corner of Lot 44, Block A, Rocky Ford Addition Elev. = 1367.92 NAVD88

BM #2: "□" on Fence Footing under warning US Airforce Installation Sign West of Rock Road, 400' N. of W $\frac{1}{2}$  Cor. Elev. = 1377.45 NAVD88



FIRE HYDRANTS REQUIRED					
LINE	STATION	BURY LINE ELEVATION	TOP OF PIPE ELEVATION	FIRE HYDRANT BURY REQUIRED*	VALVE STEM EXT. REQUIRED (ft)*
1	7+95.49	1379.00	1375.15	4.5'	-



**Baughman** Rocky Ford Addition Phase I  
**LINE 1 & LINE 1C**  
 Water Distribution System

Baughman Company, P.A. 315 Ellis St. Wichita, KS 67211 P 316-262-7271 F 316-262-0149  
 ENGINEERING | SURVEYING | PLANNING | LANDSCAPE ARCHITECTURE

PROJECT NUMBER: 448-90350  
 DESIGN: DMV  
 DRAWN: DJL  
 APPROVED: [Signature]  
 DATE: 10/24/17

REVISIONS:

SCALE: Noted  
 SHEET: **5 OF 14**

\\Projects\Rocky Ford Addition\_1606\F207\Engineering\Phase I\Wtr\_1611E593\WTR Plans.dwg