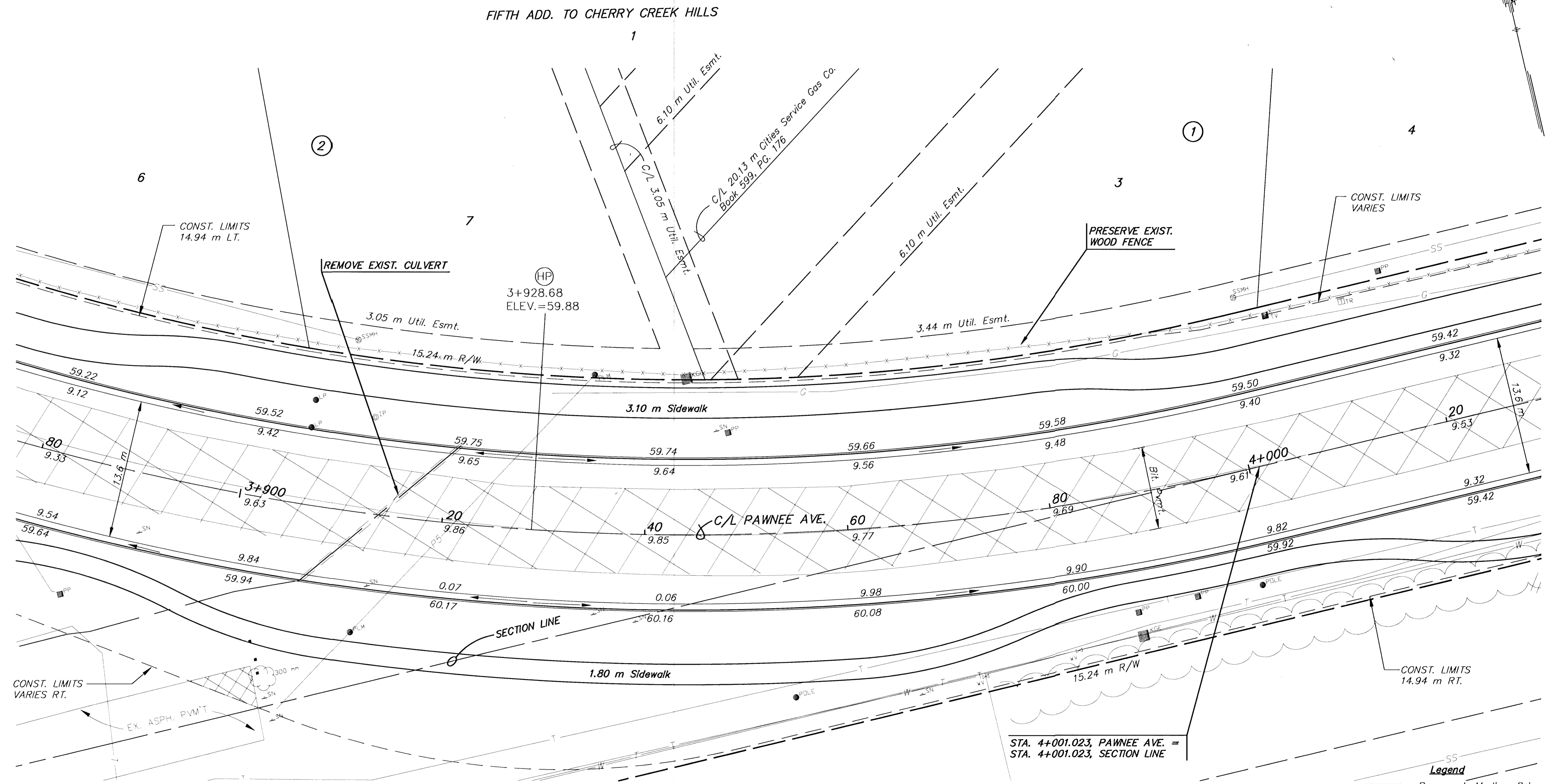


FHWA REG. NO.	STATE	PROJECT NO.	YEAR	SHEET NO.	TOTAL SHEETS
7	KANSAS	STP-N012(901)	1999	10	131

REFERENCES NOTED	DATE
REFERENCES CHECKED	



BM #10 USGS Survey Marker 8.5 m S. of section line & 161.5 m W. of Capri St. 32.54 m Rt. of Pawnee C/L. Sta. 3+906.31 Elev.=60.610

- UTILITY OWNERS**
- TV - Cox Communications (316)262-4270
 - P1 - 12" Williams Natural Gas 1-800-324-9696
 - P2 - 20" Williams Natural Gas 1-800-324-9696
 - P3 - 4" Raytheon Aircraft (316)676-6867
 - P4 - 4" Raytheon Aircraft (316)676-6867
 - P5 - 18" Williams Natural Gas 1-800-324-9696
 - P6 - 6" Conoco Pipe Line Co. 1-800-231-2551
 - G - 6" Kansas Gas Service (316)832-3168
 - E - KGE (316)261-6944
 - SS - City of Wichita Water & Sewer Dept. (316)262-6000
 - SWS - City of Wichita Water & Sewer Dept. (316)262-6000
 - T - Southwestern Bell Telephone Co. 1-800-734-7590
 - W - 16" City of Wichita Water & Sewer Dept. (316)262-6000

NO.	DATE	REVISIONS	BY	APP'D
2				
1				

KANSAS DEPARTMENT OF TRANSPORTATION

PAWNEE AVE.
STA. 3+880 TO STA. 4+020

PROJ. NO. 87 STP-N-0129-01

MKEC ENGINEERING CONSULTANTS, INC.
WICHITA, KANSAS

DESIGNED BY: JTC CHECKED BY: GJA
DRAWN BY: GJR,MLW DATE: JUNE 1999 SHEET 10 OF 131

G:\CIVIL\PAW-NEE\98171\PAW\98171E7.DWG

G:\CIVIL\PAW-NEE\98171\PAW\98171E7.DWG Wed Jul 26 09:37:16 2000