

Note:
 For 45th Street & Hillside Avenue intersection
 geometric details, See Sheets 21 & 22

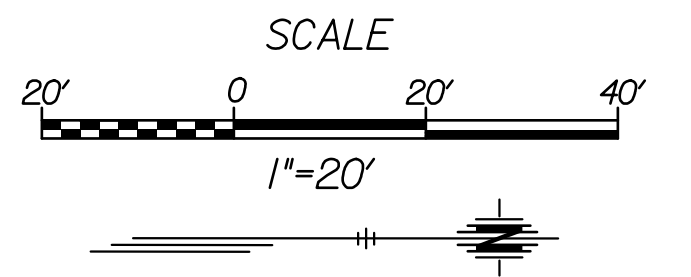
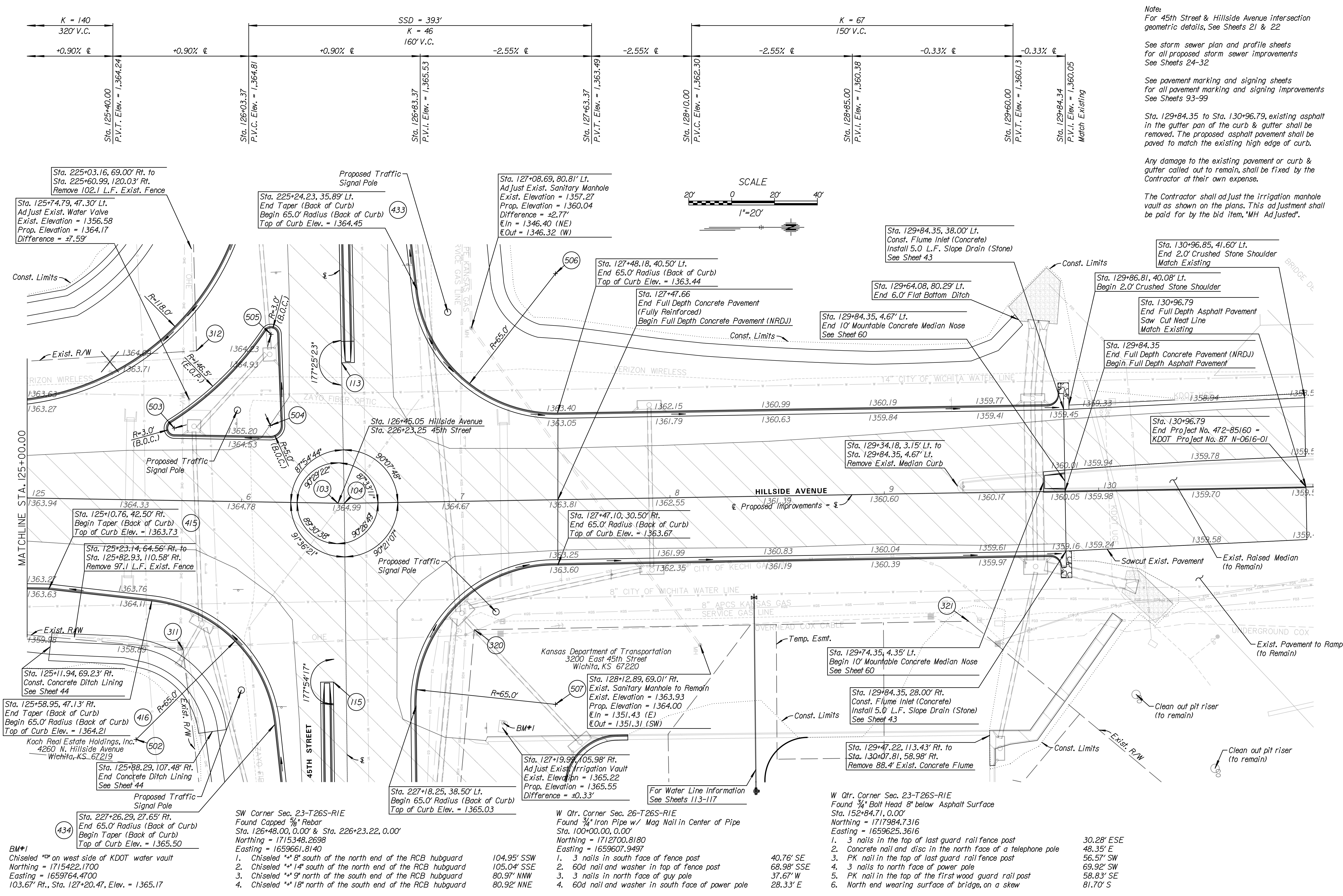
See storm sewer plan and profile sheets
 for all proposed storm sewer improvements
 See Sheets 24-32

See pavement marking and signing sheets
 for all pavement marking and signing improvements
 See Sheets 93-99

Sta. 129+84.35 to Sta. 130+96.79, existing asphalt
 in the gutter pan of the curb & gutter shall be
 removed. The proposed asphalt pavement shall be
 paved to match the existing high edge of curb.

Any damage to the existing pavement or curb &
 gutter called out to remain, shall be fixed by the
 Contractor at their own expense.

The Contractor shall adjust the irrigation manhole
 vault as shown on the plans. This adjustment shall
 be paid for by the bid item, "MH Adjusted".



CONSULTANTS:

45TH & HILLSIDE
 INTERSECTION IMPROVEMENT



REVISIONS:	MARK	DATE	DESCRIPTION

PROJ NO: 87 N-0616-01	
SCALE: 1"=20'	
DATE: 10/9/2017	
DESIGNED BY: TAU	
DRAWN BY: TAU	
CHECKED BY: MDB	
SHEET TITLE:	
HILLSIDE AVE. PLAN & PROFILE	
STA. 125+00.00 TO STA. 130+96.79	
SHEET NO.	
16	
SHEET 16	OF 166