

PLOTTED: Friday, September 29, 2017 10:35AM

STA. 34+20.00, LINE 2=
BL STA. 11+12.49, 24' LT.
1-FIRE HYDRANT ASSY.
L=9.0'

SEE DISCONNECT
DETAIL 12 (SHT. 44)

STA. 39+72.15, LINE 2=
BL STA. 16+64.67, 24' LT.
1-8"x8" TEE
2-8" ANCH. VALVE ASSY'S.(S&W)
(MJ GATE VALVES)
VALVE BOX ELEV.=1356.5

STA. 41+02.34 TO
STA. 41+12.00, LINE 2=
2-8" DIMJ 22.5" BENDS
9.66' LF OF 8" DICL PIPE

STA. 41+63.00 TO
STA. 41+71.50, LINE 2=
2-8" DIMJ 22.5" BENDS
8.5' LF OF 8" DICL PIPE

5.80' OF 8" DICL PIPE

STA. 41+77.30, LINE 2=
STA. 10+00.00, LINE 2C=
BL STA. 18+69.85, 24' LT.
1-8"x8" TEE
2-8" ANCH. VALVE ASSY'S.(S&W)
(MJ GATE VALVES)
VALVE BOX ELEV.=1356.6

20.00' OF 8" PIPE

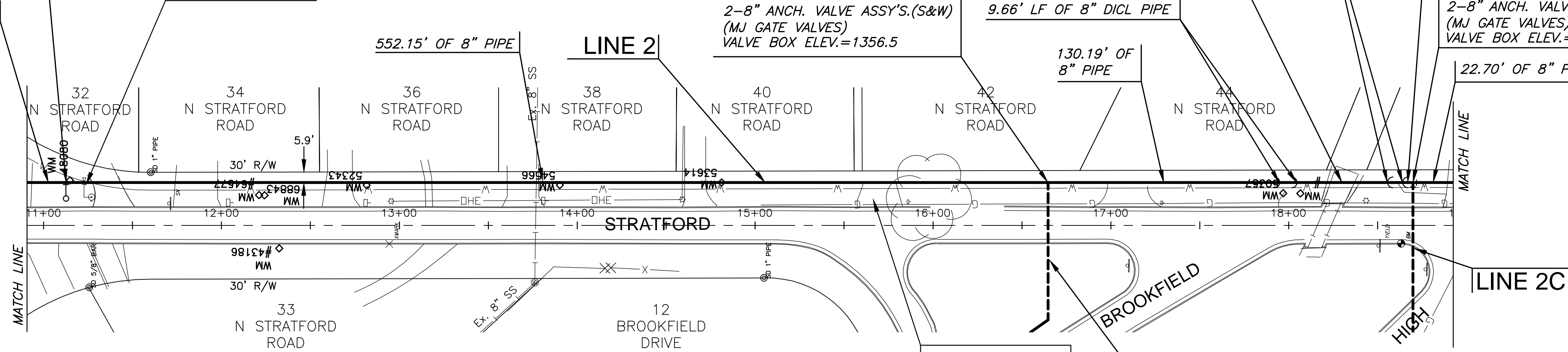
552.15' OF 8" PIPE

LINE 2

51.00' OF 8" PIPE

130.19' OF
8" PIPE

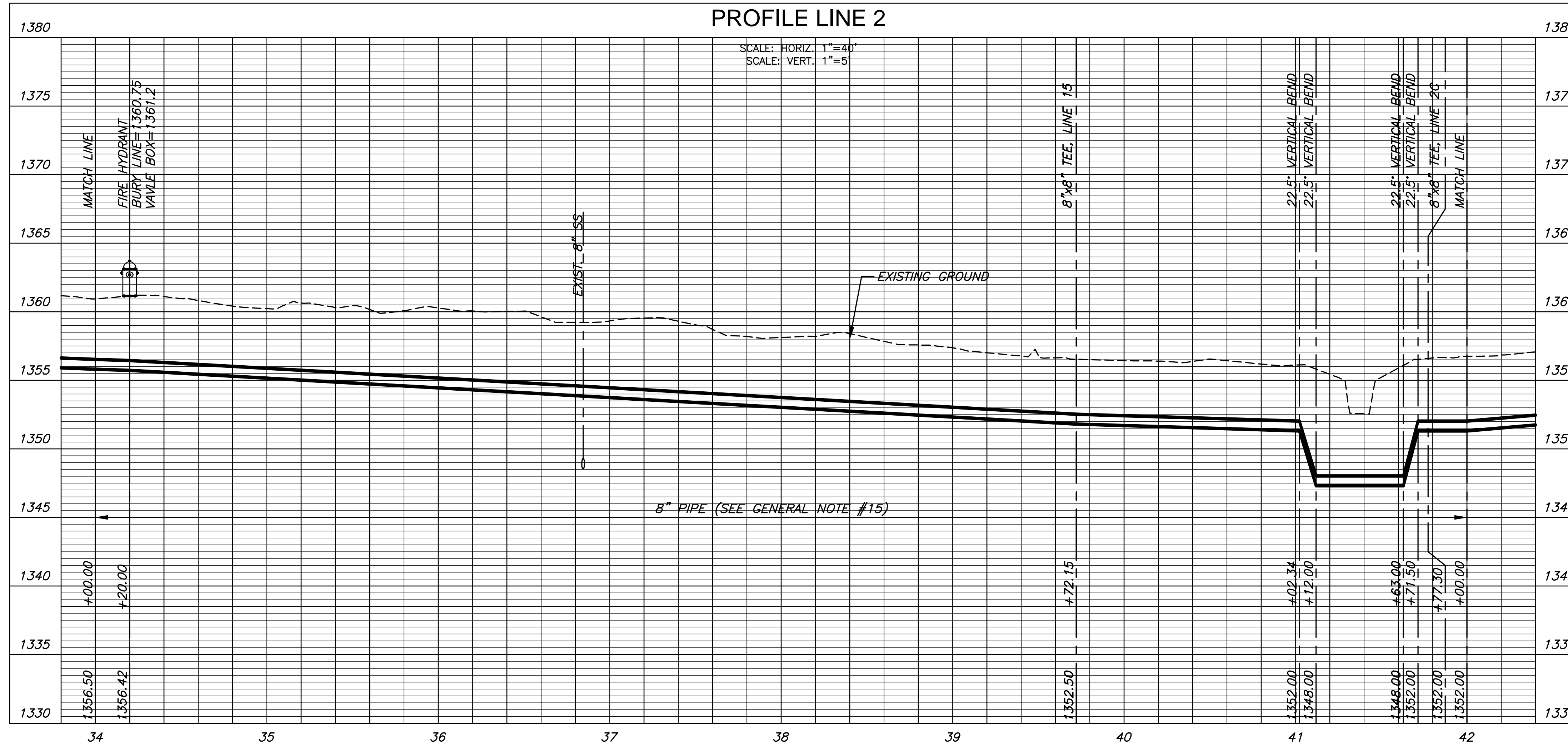
22.70' OF 8" PIPE



NOTE:
CONTRACTOR TO VERIFY LOCATION
AND ELEVATION OF EXIST. WATER
LINES AND ALL OTHER UTILITIES
PRIOR TO CONSTRUCTION.



PLAN LINE 2
PROFILE LINE 2



WATER LINE REPLACEMENT PLANS
EASTBOROUGH NORTH
DESIGN



©2013
MKEC Engineering
All Rights Reserved
www.mkec.com
These drawings and their contents,
including, but not limited to, all concepts,
designs, & ideas are the exclusive
property of MKEC Engineering (MKEC),
and may not be used or reproduced in any
way without the express consent of MKEC.

LINE 2	
PROJECT NO.	448-90610
DATE	SEPT. 2017
SCALE	AS SHOWN
DESIGNED	DRAWN
JTC	DM
CHECKED	JRA
NO.	REVISION
DATE	
SHEET NO.	
17 OF 77	

J:\PROJECTS\2013\1010713_COW EASTBOROUGH NORTH WATER REPLACEMENT\CIVIL\CAD\DWG\1313_C290.DWG