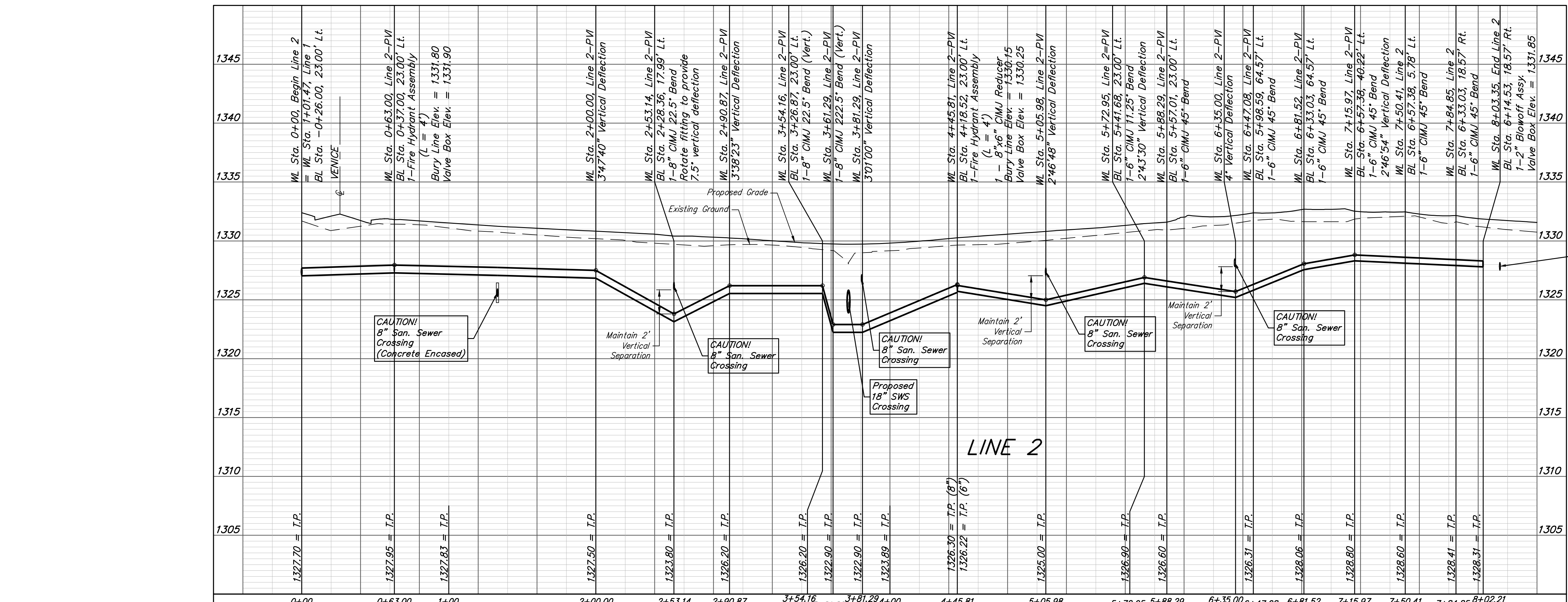
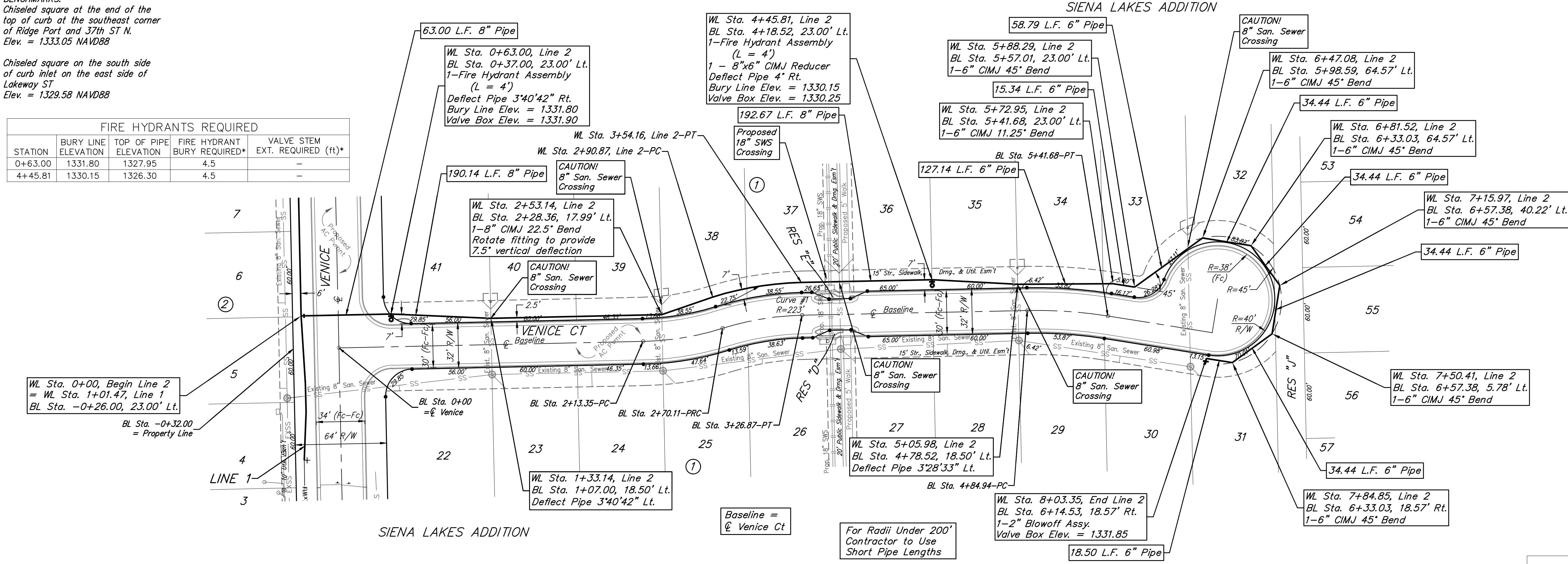
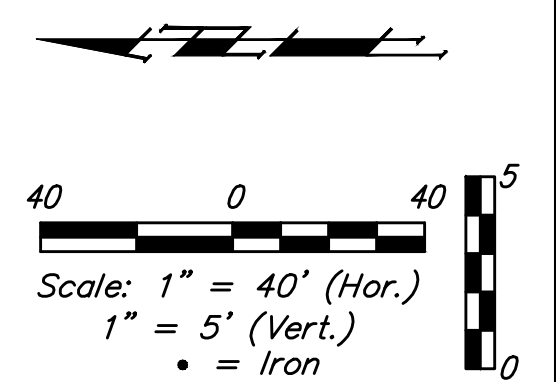


**BENCHMARKS:**  
 Chiseled square at the end of the top of curb at the southeast corner of Ridge Port and 37th ST N.  
 Elev. = 1333.05 NAVD88

Chiseled square on the south side of curb inlet on the east side of Lakeway ST.  
 Elev. = 1329.58 NAVD88

FIRE HYDRANTS REQUIRED				
STATION	BURY LINE ELEVATION	TOP OF PIPE ELEVATION	FIRE HYDRANT BURY REQUIRED*	VALVE STEM EXT. REQUIRED (ft)*
0+63.00	1331.80	1327.95	4.5	-
4+45.81	1330.15	1326.30	4.5	-



Curve #1  
 Curve Data Based on Centerline of Pipe  
 Rad. = 223' Delta = 161°53'60" Tangent = 31.86'  
 Arc = 63.29' L.C. = 63.07' Def./Ft. = 7.70738 Min.

Station	Arc	Chord 8' Left	Defl.	Total Defl.
2+89.58	-	-	0'00"00"	0'00"00"
3+00.00	10.42'	10.79'	1'20"19"	1'20"19"
3+25.00	25.00'	25.88'	3'12"41"	4'33"00"
3+50.00	25.00'	25.88'	3'12"41"	7'45'41"
3+52.87	2.87'	2.97'	0'22"07"	8'07'48"



**Baughman** Siena Lakes Addition - Phase II  
**LINE 2**  
 Water Distribution System

Baughman Company, P.A. 315 Ellis St. Wichita, KS 67211 P 316-262-7271 F 316-262-0149  
 ENGINEERING | SURVEYING | PLANNING | LANDSCAPE ARCHITECTURE

PROJECT NUMBER 448-90637	DESIGN AEG	DRAWN JAK
REVISIONS:	APPROVED	DATE 12/04/17
	SCALE Noted	SHEET 5 OF 14

\\Projects\Siena Lakes\Engineering\Phase II\WTR\_17084785\WTR\_PLANS.dwg