

FHWA REGION NO.	STATE	PROJECT NUMBER	FISCAL YEAR	SHEET NUMBER	TOTAL SHEETS
7	KANSAS	87N-0195-01	2001	53	127

BY	DATE

REFERENCES NOTED	REFERENCES CHECKED

INSTALL 2.8 S.M. LIGHT STONE RIP-RAP

STA. 0+000 LINE 2A
BL STA. 5+118.688, 11 503 RT.
INSTALL 600mm END SECTION

CAUTION!
200mm WATER MAIN

STA. 0+045.772 LINE 2A
BL STA. 5+073.018, 8 454 RT.
CONST. TYPE 1A INLET
(L=3 400 W=1 300)
TOP = 408.285

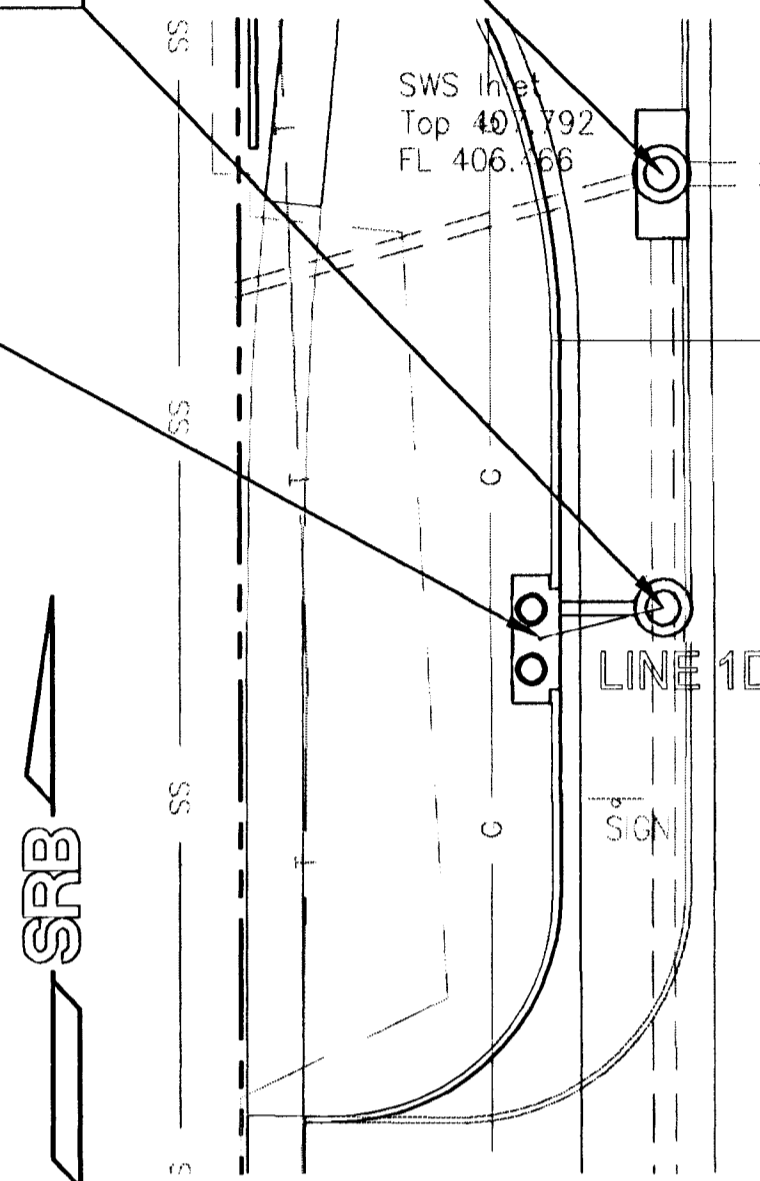
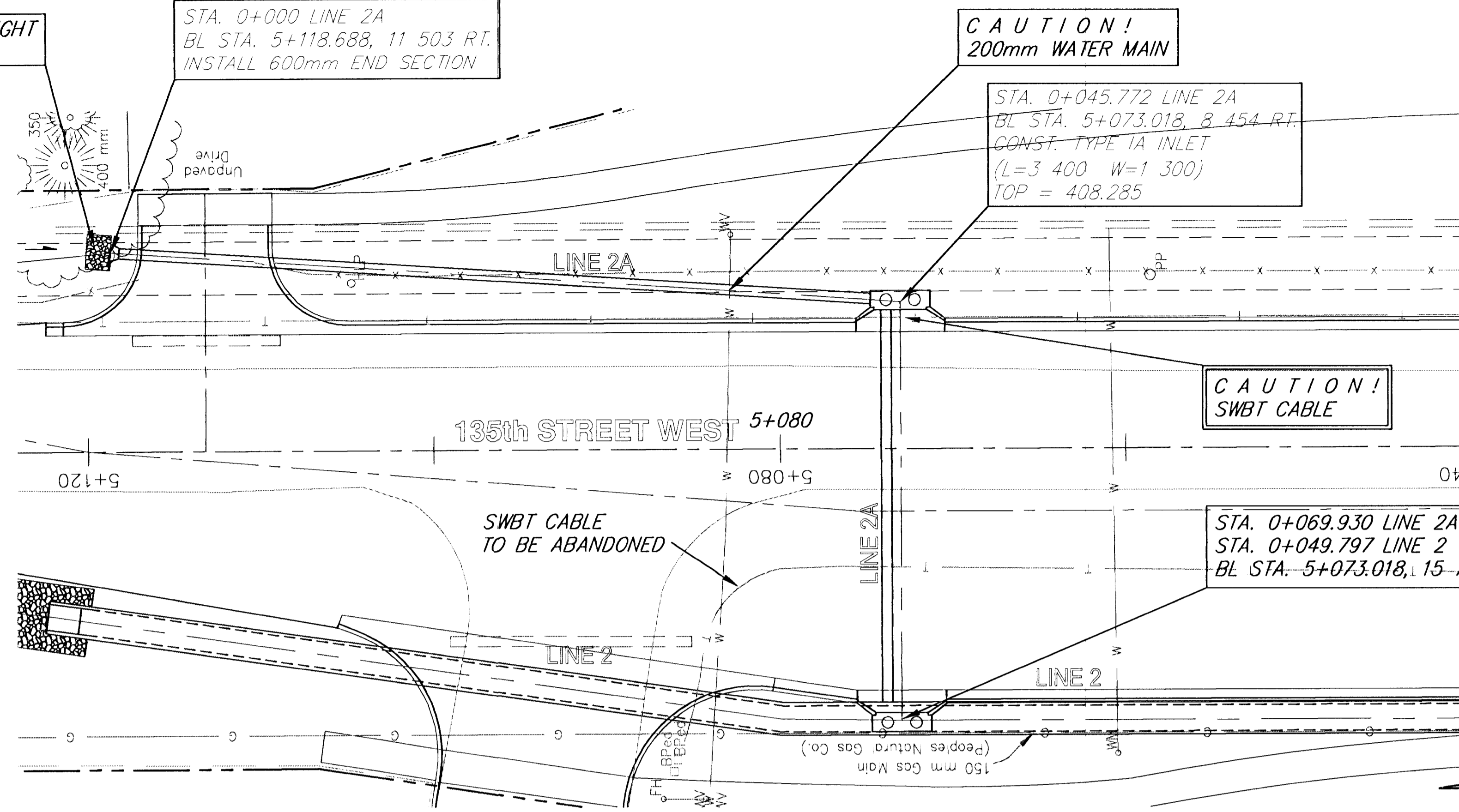
CAUTION!
SWBT CABLE

STA. 0+069.930 LINE 2A =
STA. 0+049.797 LINE 2
BL STA. 5+073.018, 15 704 LT.

BL STA. 4+971.911, 11 752 LT.
CONVERT EXISTING INLET TO MANHOLE
TOP ELEV. = 407.896
SEE DETAIL SHEET 65.

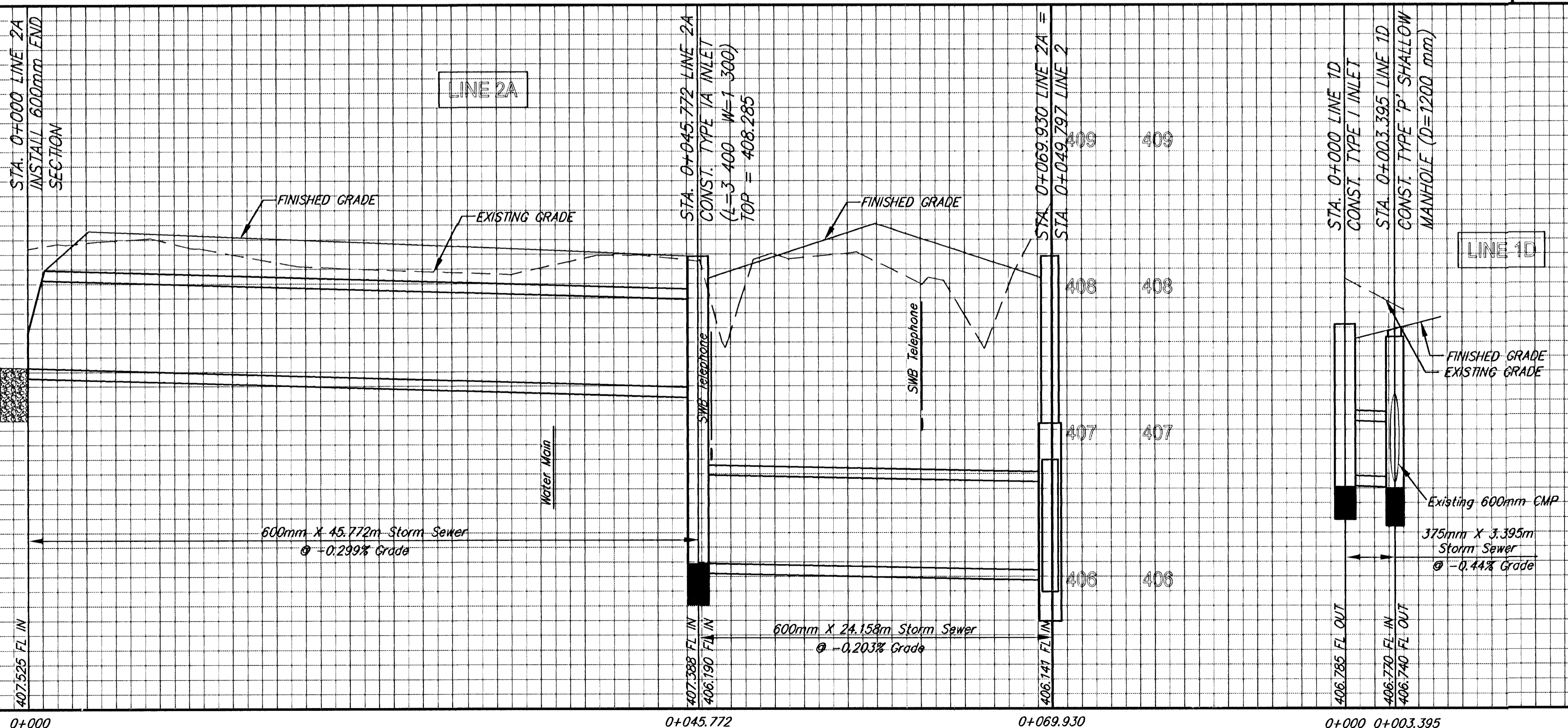
STA. 0+003.395 LINE 1D
BL STA. 4+960.346, 11 752 LT.
CONST. TYPE 'P' SHALLOW
MANHOLE (D=1500 mm)
TOP ELEV. = 407.785

STA. 0+000 LINE 1D
BL STA. 4+959.520, 15 044 LT.
CONST. TYPE 1 INLET
(L=3 400 W=1 300)
TOP ELEV. = 407.820



SCALE
PLAN: Lat. & Long. (meters)

SCALE
PLAN: Lat. & Long. (meters)



MAPLE - 135TH TO 119TH STREET WEST
STORM WATER SEWER LINES 2A & 1D

SRB
SAVOY, RUGGLES & BOHM, P.A.
ENGINEERING & SURVEYING

PROJECT NUMBER
472-76-245-83262-000-000-001

DATE
Oct. 3, 2001

UTILITY
SRB JOB 1217T

53
127