

GENERAL NOTES

- THE CONTRACTOR SHALL COMPLY WITH ALL APPLICABLE SAFETY REGULATIONS. ALL CONSTRUCTION SHALL BE COMPLETED FOLLOWING CURRENT CITY STANDARD SPECIFICATIONS AND SPECIAL PROVISIONS.
- CONTRACTOR WILL BE REQUIRED TO PROVIDE NOTICE TO UTILITY COMPANIES A MINIMUM OF SEVENTY-TWO (72) HOURS PRIOR TO ANY EXCAVATION, AS FOLLOWS:
KANSAS ONE-CALL 687-2470
THE CONTRACTOR MUST NOTIFY THE FOLLOWING IN CASE OF AN EMERGENCY:
AT&T 1-800-246-8464
BLACK HILLS ENERGY 1-800-694-8989
CITY OF WICHITA WATER 1-316-268-4555
CITY OF WICHITA SEWER 1-316-268-4073
CITY OF WICHITA STORMWATER 1-316-268-4090
CITY OF WICHITA TRAFFIC 1-316-268-4034
COX COMMUNICATIONS 1-888-249-3530
KANSAS GAS SERVICE 1-888-492-4950
WESTAR ENERGY 1-800-544-4857
- UTILITY SERVICE LINES, POLES, ETC. ARE TO BE ADJUSTED AS NECESSARY BY OTHERS PRIOR TO CONSTRUCTION UNLESS THE PLANS SPECIFICALLY CALL FOR THEIR ADJUSTMENT BY THE CONTRACTOR OR UNLESS THE PLANS SPECIFICALLY IDENTIFY A UTILITY TO BE ADJUSTED BY ITS OWNER DURING CONSTRUCTION. EXISTING UTILITIES AND THEIR LOCATION, AS SHOWN ON THE PLANS, REPRESENT THE BEST INFORMATION OBTAINABLE FOR DESIGN. THE CONTRACTOR WILL BE REQUIRED TO WORK AROUND EXISTING UTILITIES WITHIN THE RIGHT-OF-WAY WHICH DO NOT CONFLICT WITH PROPOSED CONSTRUCTION.
- RUBBLE FROM THE REMOVAL OF MISCELLANEOUS STRUCTURES AND EXCESS EXCAVATION WHICH IS TO BE WASTED SHALL BE DISPOSED OF ON SITES TO BE PROVIDED BY THE CONTRACTOR. THESE SITES SHALL BE APPROVED BY THE ENGINEER AS TO SUITABILITY, APPEARANCE AND SITE LOCATION. LOCATIONS, IN THE OPINION OF THE ENGINEER, THAT WILL LEAVE AN UNSIGHTLY APPEARANCE WILL NOT BE APPROVED. ALL DISPOSAL SITES MUST BE APPROVED BY THE KANSAS DEPARTMENT OF HEALTH AND ENVIRONMENT. MATERIAL EITHER STOCKPILED OR DISPOSED IN A FLOOD PLAN WILL REQUIRE A KANSAS STATE BOARD OF AGRICULTURE PERMIT. ANY MATERIAL DUMPED IN WATERS OF THE UNITED STATES OR WETLANDS IS SUBJECT TO U.S. CORPS OF ENGINEERS PERMITTING REGULATIONS. ANY MATERIAL BURIED OR STOCKPILED BEYOND APPROVED CONSTRUCTION LIMITS WILL REQUIRE ADDITIONAL ARCHAEOLOGICAL INVESTIGATIONS UNLESS BURIED IN A PREVIOUSLY APPROVED BORROW LOCATION.
- TREES AND SHRUBS IN PUBLIC RIGHT-OF-WAY WHICH ARE IN DIRECT CONFLICT WITH PROPOSED NEW CONSTRUCTION SHALL BE REMOVED BY THE CONTRACTOR WITH THE ENGINEER'S APPROVAL. TREES AND SHRUBS WHICH ARE NOT IN DIRECT CONFLICT WITH PROPOSED NEW CONSTRUCTION SHALL BE SAVED AND PROTECTED FROM DAMAGE.
- THE CONTRACTOR SHALL GIVE ALL PROPERTY OWNERS AND/OR TENANTS OF DEVELOPED PROPERTY ADJUTING THE CONSTRUCTION OF THIS PROJECT A MINIMUM OF TEN (10) DAYS NOTICE PRIOR TO START OF CONSTRUCTION.
- THE CONTRACTOR SHALL BE RESPONSIBLE FOR PRESERVING PROPERTY IRONS. THE CONTRACTOR WILL BE REQUIRED TO RE-ESTABLISH ANY PROPERTY IRONS WHICH ARE DAMAGED OR DESTROYED BY HIS CONSTRUCTION OPERATIONS. SUCH IRONS SHALL BE RE-ESTABLISHED BY A LICENSED LAND SURVEYOR IN ACCORDANCE WITH STATE LAWS.
- THE WATER DISTRIBUTION DIVISION SHALL FIELD LOCATE WATER VALVES ONE TIME DURING CONSTRUCTION WHEN REQUESTED BY THE CONTRACTOR. IT SHALL BE THE CONTRACTOR'S RESPONSIBILITY TO PRESERVE SUCH FIELD LOCATIONS DURING THE CONSTRUCTION PROCESS. WATER VALVES, VALVE BOXES OR FIRE HYDRANTS DAMAGED DURING CONSTRUCTION SHALL BE REPAIRED BY CONTRACTOR AT HIS OWN EXPENSE. VALVE BOXES AND WATER METERS WITHIN THE PROJECT LIMITS SHALL BE ADJUSTED TO MATCH FIELD GRADES.
- THE CONTRACTOR SHALL NOTIFY THE CONSULTANT ENGINEER AND TOM MASON WITH THE CITY AT 316-268-4574 WITH THE ANTICIPATED CONSTRUCTION START DATE AND NOTIFY THEM OF PROJECT COMPLETION. STAKING AND INSPECTION FOR THIS PROJECT WILL BE THE RESPONSIBILITY OF THE CONTRACTOR.
- IF TRAFFIC WILL BE IMPACTED BY CONSTRUCTION, A TRAFFIC CONTROL PLAN MUST BE SUBMITTED AND APPROVED BY THE CITY TRAFFIC ENGINEER, BRIAN COOK AT BTraffic@wichita.gov BEFORE CONSTRUCTION CAN BEGIN. THE CONTRACTOR SHALL BE RESPONSIBLE FOR ALL TRAFFIC CONTROL MEASURES TO FACILITATE CONSTRUCTION. ALL CONSTRUCTION ZONE MARKINGS AND SIGNAGE SHALL CONFORM TO THE LATEST VERSION OF THE MANUAL ON UNIFORM TRAFFIC CONTROL DEVICES (MUTCD) AS PUBLISHED BY THE US DEPT. OF TRANSPORTATION, FEDERAL HIGHWAY ADMINISTRATION. ALL COSTS ASSOCIATED WITH CONSTRUCTION MARKINGS AND SIGNAGE SHALL BE THE CONTRACTORS RESPONSIBILITY.
- ALL ELEVATIONS SHOWN ARE NAVD 88.
- ALL AREAS DISTURBED DURING CONSTRUCTION THAT WILL NOT BE UNDER PROPOSED PAVEMENT SHALL BE RESTORED TO MATCH EXISTING CONDITIONS.

- ALL STUBS AND PLUGGED PIPES SHALL BE LOCATED WITH GREEN PLASTIC TAPE IN THE SAME MANNER AS RISERS.
- CONNECTING TO EXISTING MANHOLES:
PRIOR TO LAYING SEWER LINES USING EXISTING STUBS IN EXISTING MANHOLES, THE CONTRACTOR SHALL EXPOSE AND VERIFY THE ELEVATION, GRADE AND ALIGNMENT OF EXISTING STUBS AND NOTIFY THE ENGINEER OF ANY DEVIATION FROM THE PLANS. WHERE CONNECTION TO AN EXISTING MANHOLE THAT DOES NOT HAVE AN EXISTING STUB OR THE STUB IS UNUSABLE DUE TO ELEVATION GRADE OR ALIGNMENT, THE CONTRACTOR SHALL CORE CUT INTO EXISTING MANHOLE WALL TO MAKE CONNECTION USING APPROVED WATER STOP GASKET, AND RESHAPE THE EXISTING MANHOLE INVERT TO PROVIDE SMOOTH FLOW. THE COST FOR CONNECTING TO EXISTING MANHOLES IS INCIDENTAL TO THE PROJECT.
- CONTRACTOR SHALL LIMIT THE EXTENT OF TRENCH OPEN OVERNIGHT AND WEEKENDS TO LESS THAN 50 FEET.
- CONTRACTOR SHALL PROVIDE POSITIVE DRAINAGE AWAY FROM ALL MANHOLE COVERS.
- THE CONTRACTOR SHALL PREVENT ANY CONSTRUCTION DEBRIS FROM ENTERING THE EXISTING SANITARY SEWER DURING CONSTRUCTION.
- THE CONTRACTOR SHALL BE RESPONSIBLE FOR MAINTAINING CONTINUOUS FLOW OF SEWAGE THROUGH CONSTRUCTION. CONTRACTORS PROPOSED METHOD FOR MAINTAINING SEWAGE FLOW SHALL BE SUBMITTED AND APPROVED BY THE SEWER MAINTENANCE DIVISION (316-268-4073) PRIOR TO STARTING AND BY-PASSING OF SEWAGE FLOWS.
- ANY OVER EXCAVATION FROM MANHOLE AND PIPE REMOVAL SHALL BE BACKFILLED WITH AB-3 COMPACTED TO 90-95% ASTM D698.
- CITY MAINTENANCE OF SANITARY SEWER MAINS ENDS AT LAST STRUCTURE WITHIN THE EASEMENT OR RIGHT-OF-WAY.
- ANY SIDEWALK, DRIVE APPROACH, CURB, OR STREET PAVEMENT REMOVED TO CONSTRUCT PROJECT MUST HAVE A PAVEMENT CUT PERMIT AND BE REPLACED BY THE CITY CONTRACTOR. PERMITS CAN BE OBTAINED BY CALLING 316-268-4501 OR 316-268-4480.
- THE CONTRACTOR SHALL INSTALL AND/OR MAINTAIN EROSION CONTROL METHODS AS SPECIFIED. THE GENERAL LOCATION OF THE REQUIRED EROSION CONTROL IS ILLUSTRATED ON THE EROSION CONTROL PLAN. THE CONTRACTOR SHALL BE RESPONSIBLE FOR MAINTAINING THE EROSION CONTROL SHOWN THROUGHOUT THE COMPLETION OF THIS PROJECT. INSTALLATION OF THESE BMP'S DOES NOT RELIEVE THE CONTRACTOR OF THE RESPONSIBILITY OF ABATING SOIL EROSION.
- ALL GRASSED AREAS DISTURBED BY CONSTRUCTION OF THE PROPOSED IMPROVEMENTS SHALL BE REPLANTED WITH GRASS AND FERTILIZED IN ACCORDANCE WITH COUNTY STANDARDS IN THE APPROPRIATE PLANTING SEASON. EXISTING GRASSED AREAS DISTURBED BY CONSTRUCTION SHALL BE REPLANTED WITH THE SAME TYPE OF GRASS AS WAS REMOVED. PASTURES AND NATIVE GRASSED AREAS SHALL BE RESEEDED IN ACCORDANCE WITH THE CRITERIA SHOWN BELOW:
NATIVE GRASS MIX:
BIG BLUESTEM - 8 LBS/ACRE
BROME GRASS - 8 LBS/ACRE
SWITCH GRASS - 3 LBS/ACRE
WESTERN WHEATGRASS - 8 LBS/ACRE
INDIAN GRASS - 8 LBS/ACRE
LITTLE BLUESTEM - 5 LBS/ACRE
SIDE OATS GRAMA - 5 LBS/ACRE
TOTAL = 45 LBS/ACRE
SEED APPLICATION = 1 LB/1,000 SQ. FT.
FERTILIZER APPLICATION (N-P-K) = 12-24-12
MULCH = PRAIRIE HAY
MULCH APPLICATION = 90 LBS/1,000 SQ. FT.
- THE CONTRACTOR SHALL SEED ALL AREAS DISTURBED BY CONSTRUCTION ACTIVITIES WITH TEMPORARY RYE GRASS. RYE GRASS SEED SHALL BE PLANTED AT A MINIMUM RATE OF SIX (6) POUNDS PER ONE THOUSAND (1,000) SQUARE FEET. THIS TEMPORARY SEEDING MAY BE OMITTED ONLY IF OTHER SEEDING IS REQUIRED IN ACCORDANCE WITH GENERAL NOTE NO. 36 ABOVE. TEMPORARY SEEDING OR PERMANENT SEEDING SHALL BE APPLIED WITHIN 14 DAYS AFTER THE AREA HAS BEEN DISTURBED.

SANITARY SEWER to serve ADVANCED LEARNING LIBRARY 345 N. SYCAMORE ST. CITY OF WICHITA, KANSAS

Gary Janzen, P.E. City Engineer
Project Number
2274 PPS (607861)

T. Mason - City of Wichita, Inspector
Stub & Plug
Release Date: 1/18/2018
: apr 1/19/2018

AS BUILTS

Contractor: Wilks Underground
Inspector: Matt Perez
Date: 2/22/2017

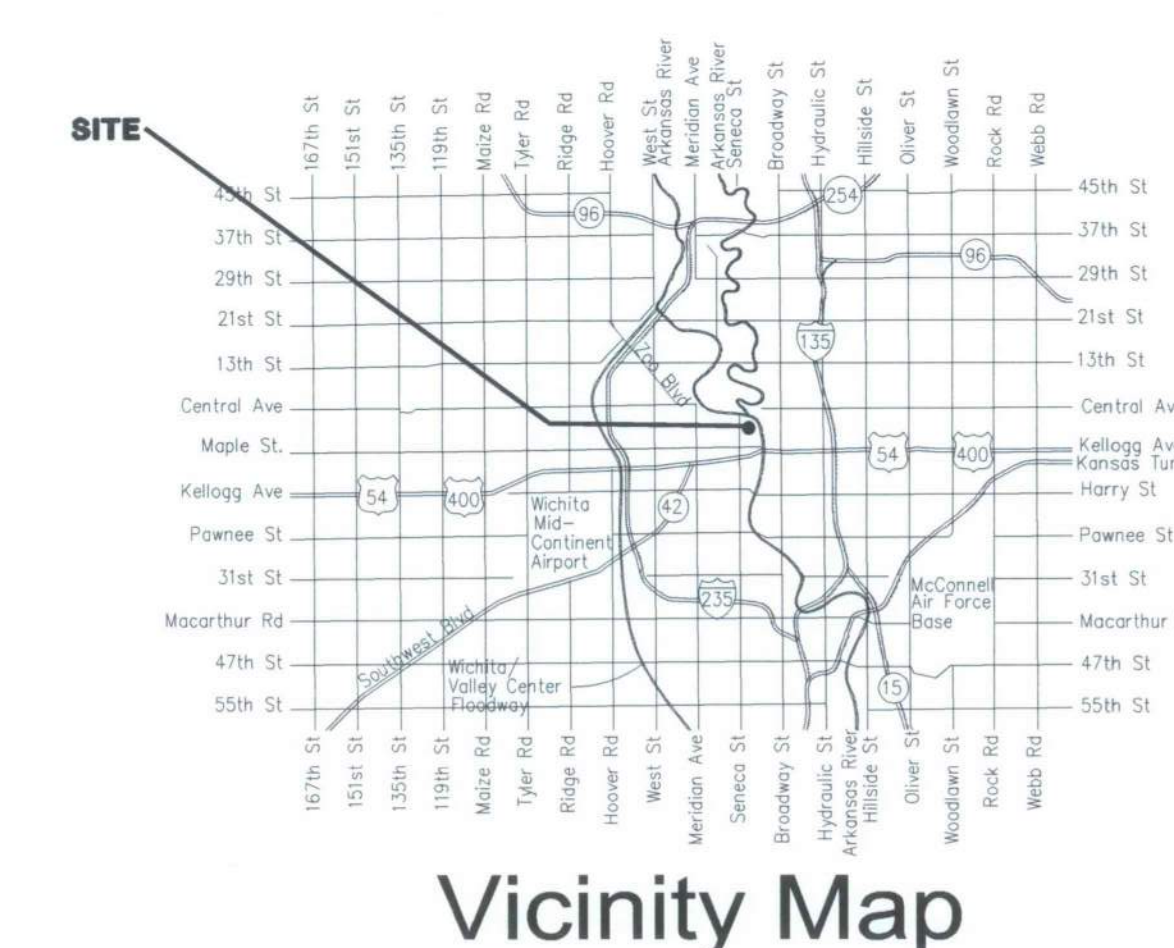


117 E. Lewis,
Wichita, KS 67202 (316)264-0242

KEY MAP
SEE SHEET NO. C5.2

BENCHMARKS
SEE SHEET NO. C5.2 FOR BENCHMARKS AND HORIZONTAL CONTROL.

CONTROL POINTS
SEE SHEET NO. C5.2 FOR BENCHMARKS AND HORIZONTAL CONTROL.



SHEET INDEX

SHEET NO. C5.1	PPS TITLE SHEET AND GENERAL NOTES
SHEET NO. C5.2	PPS KEY MAP
SHEET NO. C5.3	SANITARY SEWER LINE NO. 1
SHEET NO. C5.4	SANITARY SEWER LINE NO. 2
SHEET NO. C5.5	PRECAST MH DETAIL
SHEET NO. C5.6	MANHOLE FRAME AND COVER DETAIL
SHEET NO. C2.3	COPY OF PLAT
SHEET NO. C6.1	EROSION CONTROL PLAN EROSION CONTROL BMP DETAILS (available at Wichita.gov)

APPROVED AS NOTED
BY WICHITA PUBLIC WORKS
ENGINEERING DIVISION

Engineering: *Rebecca Duff* 8/16/16
Utilities: *[Signature]* 8-9-16

NOTE TO CONTRACTORS

Inspection and testing for this project is to be provided by a Licensed Consulting Engineering Firm under contract with the Owner/Developer. Said inspection to be in accordance with the City of Wichita standard construction engineering practices and certified by a Licensed Professional Engineer in the state of Kansas. No work shall be performed by the Contractor without such inspection nor shall any work be commenced without written authorization by City Engineering. All Construction and Materials shall comply with the current City of Wichita Specifications and Standards and Special Provisions. (on file and available at Wichita.gov).

An approved copy of these plans signed by City staff are required on-site.

AUGUST 2016



PROFESSIONAL ENGINEERING CONSULTANTS, P.A.
303 SOUTH TOPEKA WICHITA, KS 67202
316-262-2691 www.pec1.com



GLMV Architecture
1525 East Douglas, Wichita, KS 67211
Tel: (316) 265-9367
www.glmv.com



© 2015 GLMV Architecture, Inc.
All work herein is the exclusive property of GLMV Architecture, Inc. and is not to be copied or used in any way without the express written consent of GLMV Architecture, Inc. All drawings, specifications, notes, designs and arrangements appearing herein constitute the original and unpublished work of GLMV Architecture, Inc.

**CITY OF WICHITA
ADVANCED LEARNING LIBRARY**
McLean & 2nd Street Wichita, KS

MARK	DATE	DESCRIPTION
12	8/5/16	ASI 001
	8/9/16	RFI NO. 4
11	8/7/16	CITY COMMENTS
6	4/7/16	ADDENDUM NO. 6
5	4/5/16	ADDENDUM NO. 5
3	3/31/16	ADDENDUM NO. 3

PPS TITLE SHEET

PROJECT NO: 14016.000
DATE: 12/23/15
DRAWN BY: CSLC/E
CHK'D BY:

C5.1

SHEET OF



PROFESSIONAL ENGINEERING CONSULTANTS, P.A.
303 SOUTH TOPEKA WICHITA, KS 67202
316-262-2691 www.pec1.com

Sheet 06 of 06, 11.51.01, 11.51.02, 11.51.03, 11.51.04, 11.51.05, 11.51.06, 11.51.07, 11.51.08, 11.51.09, 11.51.10, 11.51.11, 11.51.12, 11.51.13, 11.51.14, 11.51.15, 11.51.16, 11.51.17, 11.51.18, 11.51.19, 11.51.20, 11.51.21, 11.51.22, 11.51.23, 11.51.24, 11.51.25, 11.51.26, 11.51.27, 11.51.28, 11.51.29, 11.51.30, 11.51.31, 11.51.32, 11.51.33, 11.51.34, 11.51.35, 11.51.36, 11.51.37, 11.51.38, 11.51.39, 11.51.40, 11.51.41, 11.51.42, 11.51.43, 11.51.44, 11.51.45, 11.51.46, 11.51.47, 11.51.48, 11.51.49, 11.51.50, 11.51.51, 11.51.52, 11.51.53, 11.51.54, 11.51.55, 11.51.56, 11.51.57, 11.51.58, 11.51.59, 11.51.60, 11.51.61, 11.51.62, 11.51.63, 11.51.64, 11.51.65, 11.51.66, 11.51.67, 11.51.68, 11.51.69, 11.51.70, 11.51.71, 11.51.72, 11.51.73, 11.51.74, 11.51.75, 11.51.76, 11.51.77, 11.51.78, 11.51.79, 11.51.80, 11.51.81, 11.51.82, 11.51.83, 11.51.84, 11.51.85, 11.51.86, 11.51.87, 11.51.88, 11.51.89, 11.51.90, 11.51.91, 11.51.92, 11.51.93, 11.51.94, 11.51.95, 11.51.96, 11.51.97, 11.51.98, 11.51.99, 11.51.100



© 2015 GLMV Architecture, Inc.
All work herein is the exclusive property of GLMV Architecture, Inc. and is not to be copied or used in any way without the express written consent of GLMV Architecture, Inc. All drawings, specifications, ideas, designs and arrangements appearing herein constitute the original and unpublished work of GLMV Architecture, Inc.

CITY OF WICHITA ADVANCED LEARNING LIBRARY

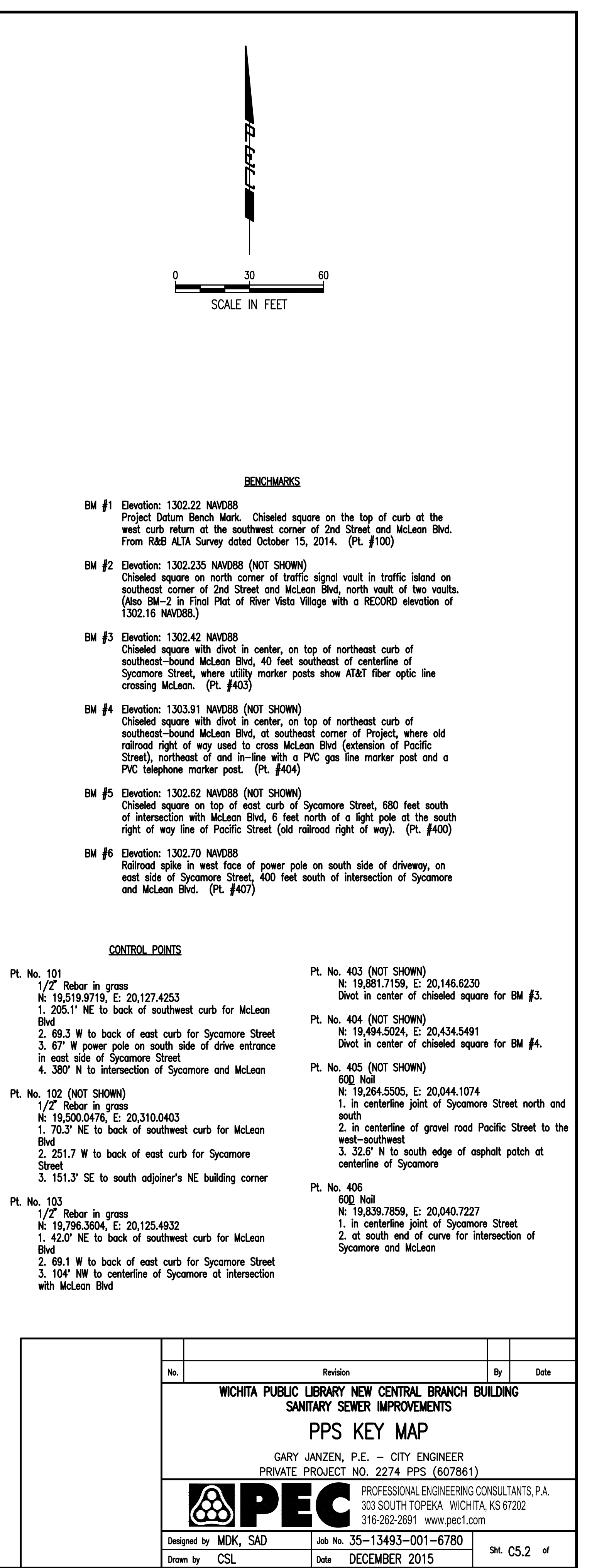
McLean & 2nd Street Wichita, KS

MARK	DATE	DESCRIPTION
12	8/5/16	ASI 001
6	6/8/16	RFI NO. 4
11	6/7/16	CITY COMMENTS
6	4/7/16	ADDENDUM NO. 6
5	4/5/16	ADDENDUM NO. 5
3	3/31/16	ADDENDUM NO. 3

PPS KEY MAP


PROJECT NO: 14016.000
DATE: 12/23/15
DRAWN BY: CSL/CAF
CHK'D BY: SHEET OF

C5.2



- BENCHMARKS**
- BM #1** Elevation: 1302.22 NAVD88
Project Datum Bench Mark. Chiseled square on the top of curb at the west curb return at the southwest corner of 2nd Street and McLean Blvd. From R&B ALTA Survey dated October 15, 2014. (Pt. #100)
 - BM #2** Elevation: 1302.235 NAVD88 (NOT SHOWN)
Chiseled square on north corner of traffic signal vault in traffic island on southeast corner of 2nd Street and McLean Blvd, north vault of two vaults. (Also BM-2 in Final Plat of River Vista Village with a RECORD elevation of 1302.16 NAVD88.)
 - BM #3** Elevation: 1302.42 NAVD88
Chiseled square with diot in center, on top of northeast curb of southeast-bound McLean Blvd, 40 feet southeast of centerline of Sycamore Street, where utility marker posts show AT&T fiber optic line crossing McLean. (Pt. #403)
 - BM #4** Elevation: 1303.91 NAVD88 (NOT SHOWN)
Chiseled square with diot in center, on top of northeast curb of southeast-bound McLean Blvd, at southeast corner of Project, where old railroad right of way used to cross McLean Blvd (extension of Pacific Street), northeast of and in-line with a PVC gas line marker post and a PVC telephone marker post. (Pt. #404)
 - BM #5** Elevation: 1302.62 NAVD88 (NOT SHOWN)
Chiseled square on top of east curb of Sycamore Street, 680 feet south of intersection with McLean Blvd, 6 feet north of a light pole at the south right of way line of Pacific Street (old railroad right of way). (Pt. #400)
 - BM #6** Elevation: 1302.70 NAVD88
Railroad spike in west face of power pole on south side of driveway, on east side of Sycamore Street, 400 feet south of intersection of Sycamore and McLean Blvd. (Pt. #407)

- CONTROL POINTS**
- Pt. No. 101**
1/2" Rebar in grass
N: 19,519.9719, E: 20,127.4253
1. 205.1' NE to back of southwest curb for McLean Blvd
2. 69.3' W to back of east curb for Sycamore Street
3. 67' W power pole on south side of drive entrance in east side of Sycamore Street
4. 380' N to intersection of Sycamore and McLean
 - Pt. No. 102 (NOT SHOWN)**
1/2" Rebar in grass
N: 19,500.0476, E: 20,310.0403
1. 70.3' NE to back of southwest curb for McLean Blvd
2. 251.7' W to back of east curb for Sycamore Street
3. 151.3' SE to south adjoiner's NE building corner
 - Pt. No. 103**
1/2" Rebar in grass
N: 19,796.3004, E: 20,125.4932
1. 42.0' NE to back of southwest curb for McLean Blvd
2. 69.1' W to back of east curb for Sycamore Street
3. 104' NW to centerline of Sycamore at intersection with McLean Blvd
 - Pt. No. 403 (NOT SHOWN)**
N: 19,881.7159, E: 20,146.6230
Diot in center of chiseled square for BM #3.
 - Pt. No. 404 (NOT SHOWN)**
N: 19,494.5024, E: 20,434.5491
Diot in center of chiseled square for BM #4.
 - Pt. No. 405 (NOT SHOWN)**
600 Nail
N: 19,284.5505, E: 20,044.1074
1. in centerline joint of Sycamore Street north and south
2. in centerline of gravel road Pacific Street to the west-southwest
3. 32.6' N to south edge of asphalt patch at centerline of Sycamore
 - Pt. No. 406**
600 Nail
N: 19,239.7859, E: 20,040.7227
1. in centerline joint of Sycamore Street
2. at south end of curve for intersection of Sycamore and McLean

No.	Revision	By	Date
WICHITA PUBLIC LIBRARY NEW CENTRAL BRANCH BUILDING SANITARY SEWER IMPROVEMENTS PPS KEY MAP GARY JANZEN, P.E. - CITY ENGINEER PRIVATE PROJECT NO. 2274 PPS (607861)			
 IPEC PROFESSIONAL ENGINEERING CONSULTANTS, P.A. 303 SOUTH TOPEKA WICHITA, KS 67202 316-262-2691 www.pec1.com			
Designed by	MDK, SAD	Job No.	35-13493-001-6780
Drawn by	CSL	Date	DECEMBER 2015
		SHT	C5.2 of

Saved: 06:05:00:015 11/25/16 MW: PLS
 PLS: 11/25/16 11:20:00 235 25 PLS by CSL
 US: Wichita-Fish(2013)13493\001\Main\Drawings\13493-001-C5.2 PPS KEY MAP

Saved: 06/05/2015 15:59 PM by CSJ
 PLOT: 11/04/15 12:08 PM by CSJ
 U:\Working-Fest\2013\15493\001\Main\Drawings\15493-001-CSJ PPS LINE NO. 2

1

E

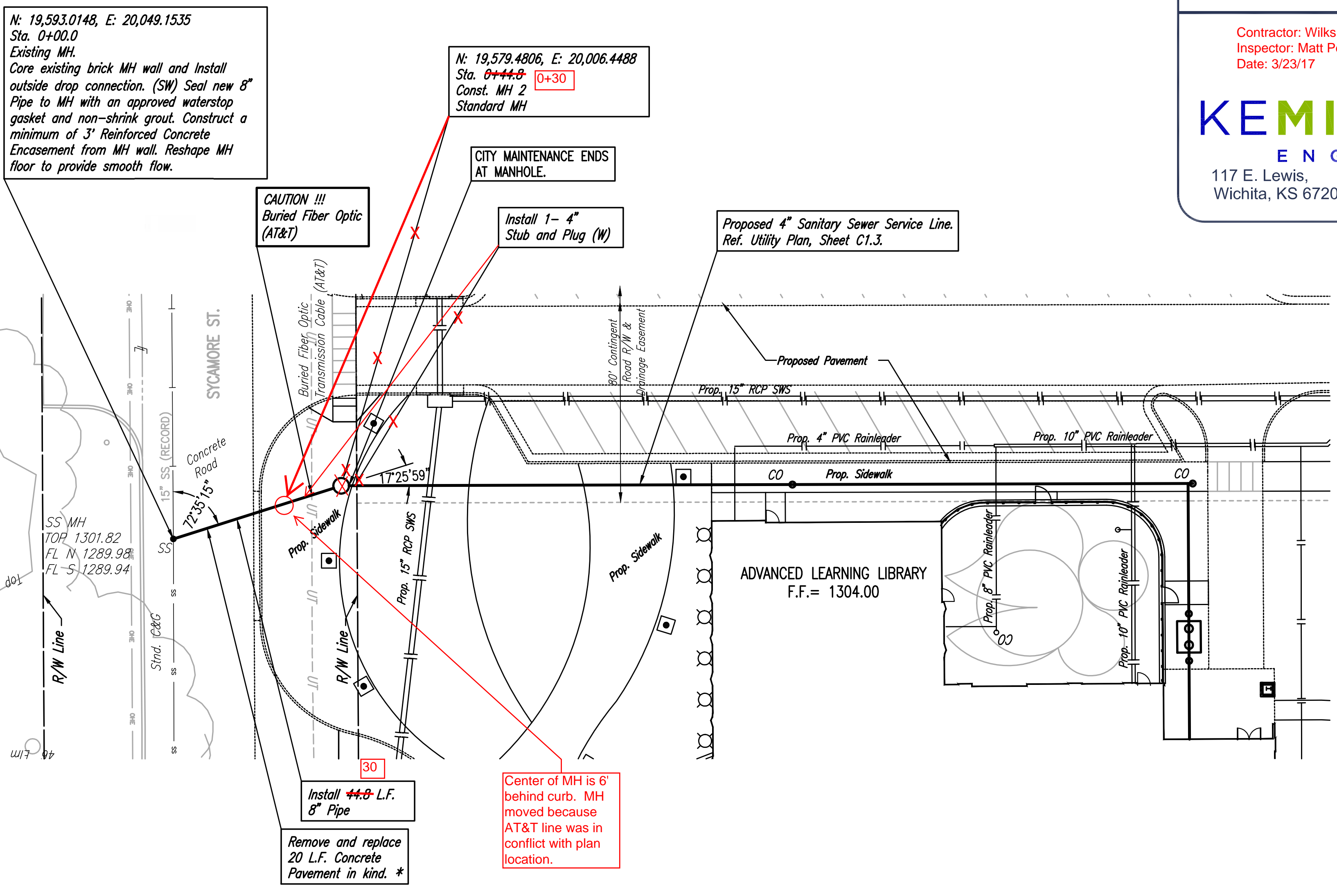
D

C

B

A

1

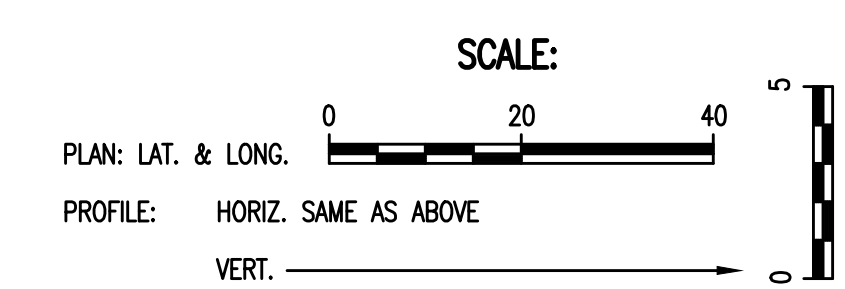


AS BUILTS

Contractor: Wilks Underground
 Inspector: Matt Perez
 Date: 3/23/17

KEMILLER
 ENGINEERING PA

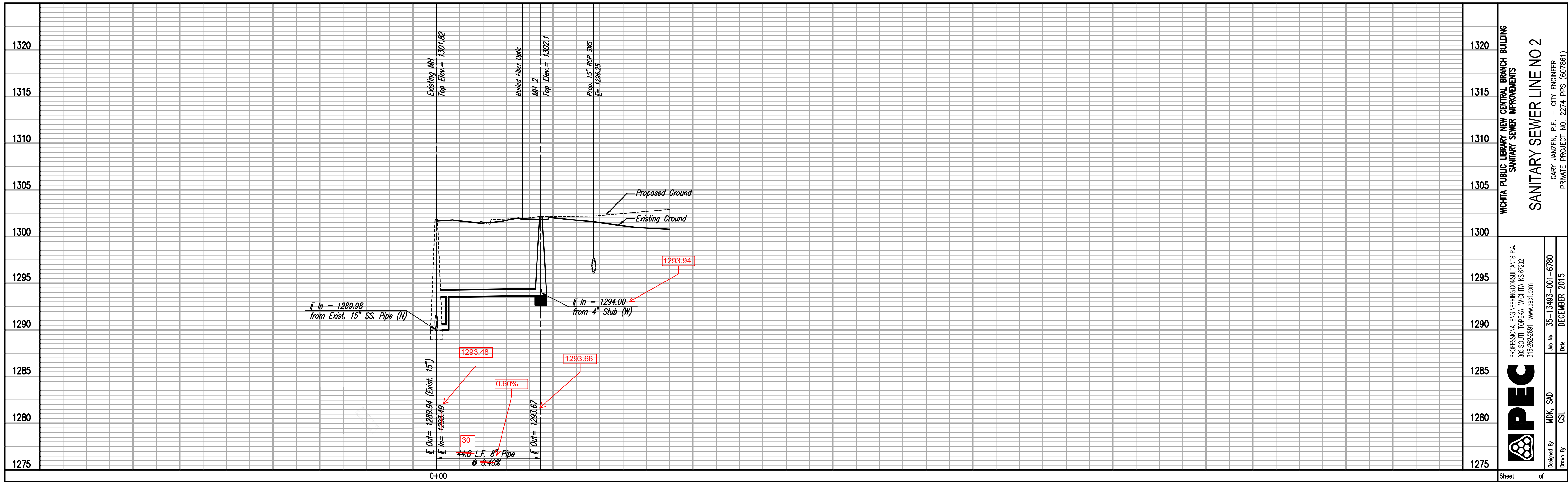
117 E. Lewis,
 Wichita, KS 67202 (316)264-0242



* THE CONTRACTOR SHALL LIMIT LANE CLOSURE OF SYCAMORE STREET. THE CONTRACTOR SHALL SUPPLY A TRAFFIC CONTROL PLAN FOR REVIEW AND APPROVAL AS NOTED IN GENERAL NOTE 21 ON SHEET CS.1. THE CONTRACTOR IS RESPONSIBLE FOR ALL COSTS ASSOCIATED WITH THE TRAFFIC CONTROL PLAN AND IMPLEMENTATION.

ADDED ENTIRE SHEET

SANITARY SEWER LINE NO 2



WICHITA PUBLIC LIBRARY NEW CENTRAL BRANCH BUILDING SANITARY SEWER IMPROVEMENTS	
SANITARY SEWER LINE NO 2	
<small>GARY JANZEN, P.E. - CITY ENGINEER PRIVATE PROJECT NO. 2274-PPS (607861)</small>	
	<small>PROFESSIONAL ENGINEERING CONSULTANTS P.A. 303 SOUTH TOPEKA WICHITA, KS 67202 316-262-2691 www.pec.com</small>
<small>Designed By</small> MJK, SJD	<small>Job No.</small> 35-15493-001-5780 <small>Date</small> DECEMBER 2015
<small>Drawn By</small> CSJ	<small>Form</small>
Sheet	of

GLMV Architecture
 1525 East Douglas, Wichita, KS 67211
 Tel: (316) 265-9367
 www.glmv.com

© 2015 GLMV Architecture, Inc.
All work herein is the exclusive property of GLMV Architecture, Inc. and is not to be copied or used in any way without the express written consent of GLMV Architecture, Inc. All drawings, specifications, ideas, designs and arrangements appearing herein constitute the original and unpublished work of GLMV Architecture, Inc.

CITY OF WICHITA
ADVANCED LEARNING LIBRARY
 McLean & 2nd Street Wichita, KS

MARK	DATE	DESCRIPTION
12	8/5/16	ASI 001
	6/8/16	RFI NO. 4
11	6/7/16	CITY COMMENTS
6	4/7/16	ADDENDUM NO. 6
5	4/5/16	ADDENDUM NO. 5
3	3/31/16	ADDENDUM NO. 3

SANITARY SEWER LINE NO 2

PROJECT NO: 14016.000
 DATE: 12/23/15
 DRAWN BY: CSJ, GAE
 CHK'D BY:

PROFESSIONAL ENGINEERING CONSULTANTS P.A.
 303 SOUTH TOPEKA WICHITA, KS 67202
 316-262-2691 www.pec.com

C5.4

SHEET OF

2

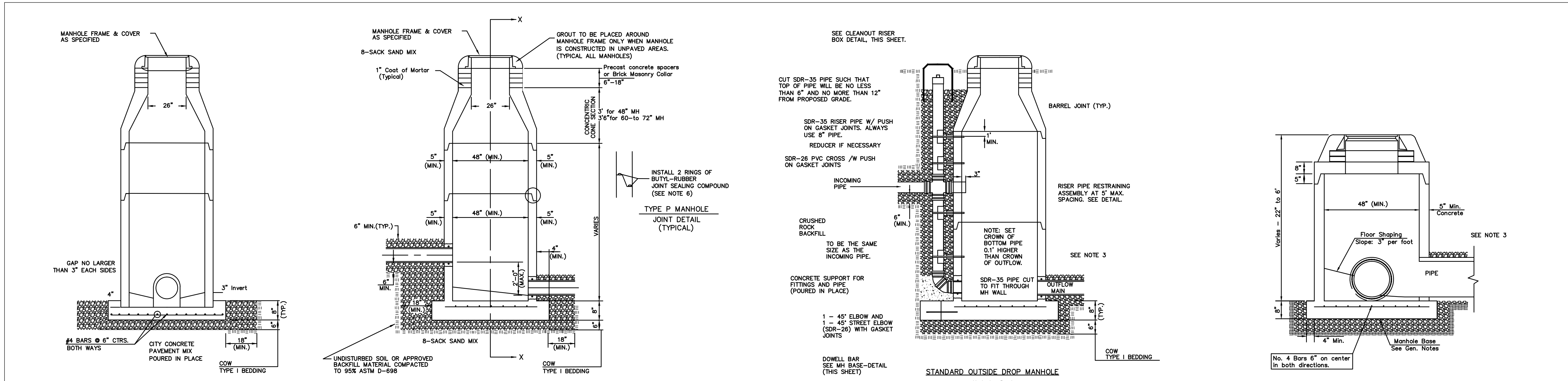
3

4

5

6

CITY OF WICHITA
ADVANCED LEARNING LIBRARY
 McLean & 2nd Street
 Wichita, KS



- PRECAST MANHOLE GENERAL NOTES**
1. ALL PRECAST CONCRETE MANHOLE SECTIONS SHALL CONFORM TO THE LATEST REVISIONS OF A.S.T.M. C478 AS MODIFIED BY THE SPECIFICATIONS.
 2. NON-SHRINK GROUT SHALL BE NON-METALLIC TYPE.
 3. APPROVED FLEXIBLE WATERSTOP SHALL BE INSTALLED TO JOIN THE SEWER PIPE TO THE MANHOLE WALL. THE SEWER PIPE SHALL BE SUPPORTED WITH CRUSHED ROCK A MINIMUM OF 3 FEET FROM THE MANHOLE WALL AND TO THE FIRST JOINT FOR V.C.P. SUCH THAT THE JOINT REMAINS FLEXIBLE.
 4. ALL INSIDE SURFACES OF THE CONCRETE MANHOLE WHICH WOULD BE EXPOSED TO SEWER GAS SHALL BE COATED PER SECTION 804.4 OF STANDARD SPECIFICATIONS.
 5. EXTERIOR MANHOLE WALLS SHALL BE COATED PER SECTION 804.4 OF STANDARD SPECIFICATIONS.
 6. JOINT SEALING COMPOUND SHALL BE PER 804.4 OF STANDARD SPECIFICATIONS.
 7. ALL MANHOLE SECTION JOINTS THAT WILL BE IN GROUNDWATER OR GREATER THAN 12" DEEP SHALL BE WRAPPED WITH AN EXTERNAL JOINT SEAL PER SECTION 804.4 OF STANDARD SPECIFICATIONS. AS INDICATED BY THE PLANS.
 8. PRECAST MANHOLES SHALL BE SET AT LEAST 4 INCHES INTO THE MANHOLE BASE FOR DOG HOUSE MANHOLES.
 9. TOP OF MANHOLE FLOOR SLAB SHALL BE AT LEAST 3 INCHES BELOW THE FLOW LINE OF THE OUTLET PIPE TO INSURE SUFFICIENT MINIMUM THICKNESS OF SHAPED INVERT.
 10. LIFTING HOLES SHALL BE FILLED WITH NON-SHRINK GROUT AND THE INTERIOR SURFACE COATED AS SPECIFIED.
 11. MORTAR USED IN MASONRY CONSTRUCTION SHALL CONTAIN 8 SACKS OF CEMENT PER CUBIC YARD. CONCRETE USED IN MANHOLE BASES SHALL CONFORM TO THE REQUIREMENTS OF CONCRETE FOR CONCRETE PAVEMENT CONSTRUCTION AS SPECIFIED IN THE CITY STANDARD PAVING SPECIFICATIONS USING CITY CONCRETE PAVEMENT MIX WITHOUT AIR ENTRAINING ADMIXTURE. MORTAR SHALL BE PLACED AROUND THE MANHOLE RING AS SHOWN ON THE DRAWINGS WHEN MANHOLES ARE CONSTRUCTED IN UNPAVED AREAS. COMPLETED MANHOLE SHALL BE WITHOUT LEAKS AND WATER TIGHT.
 12. REINFORCING STEEL SHALL BE INSTALLED IN THE MANHOLE BASES AND SHALL CONSIST OF NO.4 BARS PLACED ON 6" CENTERS IN BOTH DIRECTIONS. THE MANHOLE BASE REINFORCEMENT SHALL BE PLACED AT LEAST 3" ABOVE THE BOTTOM OF THE MANHOLE BASE. ALL COSTS FOR FURNISHING AND INSTALLING REINFORCING STEEL SHALL BE INCLUDED IN THE UNIT PRICE BID FOR THE MANHOLE.
 13. WALL THICKNESS SHALL BE 1" GREATER THAN MANHOLE DIAMETER IN FEET.
 14. OPENINGS SHALL BE CORE DRILLED INTO THE MANHOLE WALL WHEN OUTSIDE DROPS ARE CONSTRUCTED ON EXISTING MANHOLES. SUCH OPENINGS DRILLED INTO EXISTING MANHOLES SHALL BE AS SMALL AS PRACTICAL TO FACILITATE INSTALLING AND GROUTING THE NEW PIPE IN PLACE. WATERSTOP GASKETS SHALL BE USED WITH P.V.C. PIPE. THE NEW PIPE SHALL BE GROUTED INTO THE OPENING USING AN APPROVED NONSHRINK GROUT FOR THE FULL MANHOLE WALL THICKNESS. THE EXTERIOR OF THE COMPLETED CONNECTION SHALL BE SEALED WITH AN APPROVED BITUMINOUS COATING SUCH THAT THE CONNECTION WILL BE WATER TIGHT. FLOOR OF MANHOLE SHALL BE MODIFIED TO FORM NEW FLOW CHANNEL FOR THE NEW CONNECTION AS INDICATED BY THE DRAWING. THIS WORK, INCLUDING MODIFICATION OF MANHOLE FLOOR, SHALL BE PAID FOR AT THE UNIT PRICE BID FOR OUTSIDE DROP STACK CONSTRUCTED ON EXISTING MANHOLE.
 15. THE FLOORS OF ALL MANHOLES SHALL BE SHAPED WITH FLOW CHANNELS SUCH THAT THE MANHOLES WILL BE SELF CLEANING AND FREE OF AREAS WHERE SOLIDS COULD BE DEPOSITED AS SEWAGE FLOWS THROUGH THE MANHOLE FROM ALL INLET PIPES TO THE OUTLET PIPE. FLOW CHANNELS SHALL BE FORMED TO MATCH THE BOTTOM HALVES OF THE INFLOWING PIPES AND THE OUTFLOWING PIPE AS SHOWN BY THE DRAWINGS. MANHOLE FLOORS SHALL HAVE SLOPES OF 3 INCHES PER FOOT IN THE AREAS OUTSIDE OF THE FLOW CHANNELS SLOPED TOWARD THE FLOW CHANNELS. PIPES LAID THROUGH MANHOLES SHALL HAVE THE TOP HALF REMOVED TO NEAT LINES FOR THE FULL INSIDE DIAMETER OF THE MANHOLE. MANHOLE FLOORS SHALL THEN BE SHAPED AROUND THE BOTTOM HALF OF THE PIPE WHICH FORMS THE FLOW CHANNEL.
 16. MANHOLE COVER CASTINGS AND MANHOLE FRAME CASTINGS SHALL CONFORM TO THE REQUIREMENTS AS INDICATED IN THE STANDARD SPECIFICATIONS AND AS SHOWN IN THE STANDARD DETAIL DRAWING.
 17. THE VERTICAL DROP IN STANDARD MANHOLES SHALL NOT EXCEED 2' REGARDLESS OF PIPE SIZE. THE CROWNS OF INFLOWING PIPES SHALL NEVER BE SET LOWER THAN THE CROWN OF THE OUTFLOWING PIPE.
 18. STANDARD MANHOLES SHALL BE BID AS STANDARD MANHOLES FOR THE TYPE AND DIAMETER INDICATED. OUTSIDE DROP MANHOLES SHALL BE BID AS STANDARD OUTSIDE DROP MANHOLES FOR THE TYPE AND DIAMETER INDICATED. ALL MANHOLE DIAMETERS WILL BE 4' UNLESS INDICATED OTHERWISE.
 19. PRECAST CONCRETE SPACERS OR BRICK MASONRY COLLAR SHALL BE INSTALLED BETWEEN THE CAST IRON FRAME AND THE CONCENTRIC CONE. THE COLLAR WILL HAVE 8" WALLS AND A VERTICAL HEIGHT OF 6" MINIMUM AND 18" MAXIMUM. A 1" COAT OF MORTAR WILL BE PLASTERED ON THE OUTSIDE OF THE COLLAR. THE USE OF PRE-CAST CONCRETE SPACERS FOR MANHOLE TOP ADJUSTMENT IS ALSO ALLOWED.
 20. THE FULL DIAMETER OF THE MANHOLE SHALL EXTEND THE ENTIRE DEPTH OF THE MANHOLE TO THE CONE SECTION. NO REDUCTION IN MANHOLE DIAMETER WILL BE ALLOWED.
 21. REFER TO PLANS FOR SIZE OF OUTSIDE DROP RISER, SADDLES AND CROSS.

REVISED JANUARY 2015

PRECAST SANITARY SEWER MANHOLE

CITY ENGINEER
GARY JANZEN, P.E.

PROJECT NUMBER 2274 PPS	OCA NUMBER (607861)	DATE
----------------------------	------------------------	------

CITY ENGINEER'S OFFICE
 CITY HALL - SEVENTH FLOOR
 455 NORTH MAIN STREET
 WICHITA, KANSAS 67202-1620
 (316) 268-4501

SHEET

MARK	DATE	DESCRIPTION
12	8/5/16	ASI 001
	6/8/16	RFI NO. 4
11	6/7/16	CITY COMMENTS
6	4/7/16	ADDENDUM NO. 6
5	4/5/16	ADDENDUM NO. 5
3	3/31/16	ADDENDUM NO. 3

CITY OF WICHITA ADVANCED LEARNING LIBRARY

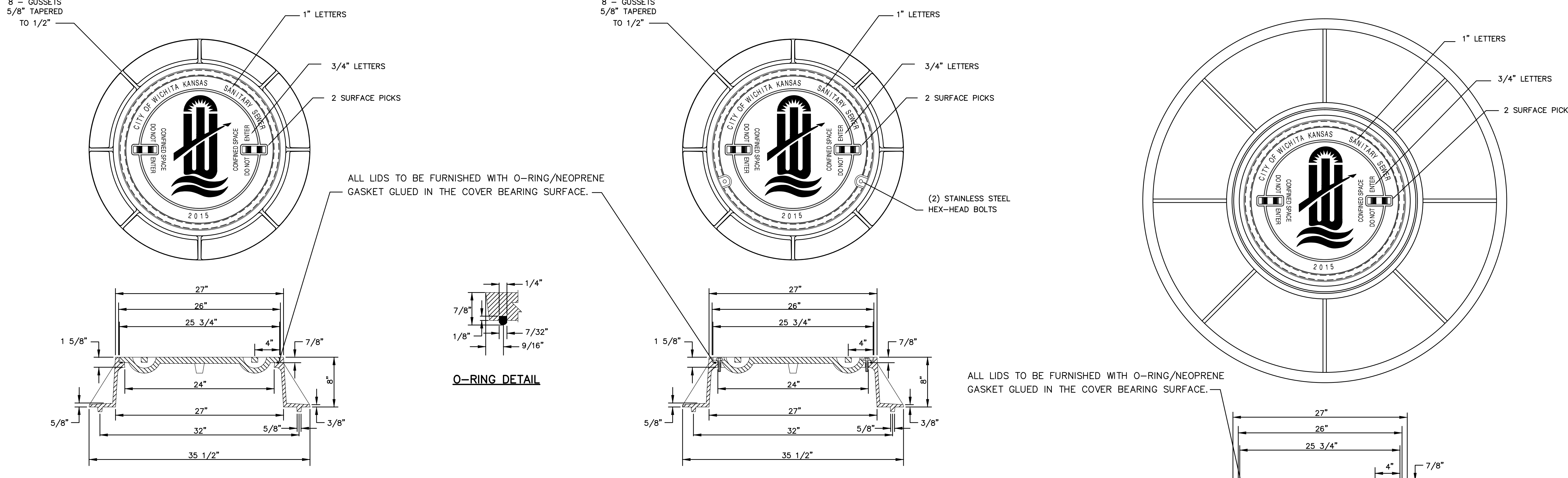
McLean & 2nd Street
Wichita, KS

MARK	DATE	DESCRIPTION
12	8/5/16	ASI 001
	6/8/16	RFI NO. 4
11	6/7/16	CITY COMMENTS
6	4/7/16	ADDENDUM NO. 6
5	4/5/16	ADDENDUM NO. 5
3	3/31/16	ADDENDUM NO. 3

MANHOLE FRAME AND COVER

PROJECT NO: 14016.000
DATE: 12/23/15
DRAWN BY: CSL/GAF
CHK'D BY: _____
SHEET OF

C5.6



STANDARD MANHOLE FRAME & COVER
DEETER #1261 OR EJIW #1936-71

BOLT DOWN MANHOLE FRAME & COVER
DEETER #1261 OR EJIW #1936-71

WIDE FLANGED FRAME & COVER
DEETER #1261A

ALL LIDS TO BE FURNISHED WITH O-RING/NEOPRENE GASKET GLUED IN THE COVER BEARING SURFACE.

NOTE:
1. FURNISHED WITH MACHINED HORIZONTAL BEARING SURFACE.

NOTE:
1. FURNISHED WITH MACHINED HORIZONTAL BEARING SURFACE.

NOTE:
1. FURNISHED WITH MACHINED HORIZONTAL BEARING SURFACE.

GENERAL NOTES

- MANHOLE CASTINGS SHALL BE MANUFACTURED USING GOOD QUALITY GRAY IRON CONFORMING TO CLASS 30 OF A.S.T.M. DESIGNATION A-48. DIMENSIONS SHOWN ON THE DETAILED DRAWINGS SHALL BE CONSIDERED AS MINIMUM REQUIREMENTS AND ANY DEVIATIONS FROM THE DIMENSIONS SHOWN MUST BE SPECIFICALLY APPROVED. THE FINISHED CASTINGS SHALL BE OF UNIFORM QUALITY, FREE FROM BLOWHOLES, POROSITY, HARD SPOTS, SHRINKAGE DISTORTIONS OR OTHER DEFECTS.
- MANHOLE CASTINGS SHALL BE MANUFACTURED SUCH THAT A COVER MANUFACTURED BY ANY ONE FOUNDRY WILL FIT INTERCHANGEABLY INTO A FRAME MANUFACTURED BY ANOTHER FOUNDRY AND STILL MEET ALLOWABLE CLEARANCES AND NON-ROCKING REQUIREMENTS. THIS WILL REQUIRE MANUFACTURING OF THE MATCHING FACES ON THE COVER AND THE FRAME TO CLOSE TOLERANCES.
- THE OUTSIDE CIRCUMFERENCE OF THE VERTICAL FACE OF THE COVER AND THE INSIDE CIRCUMFERENCE OF THE VERTICAL FACE IN THE FRAME RECESS SHALL BE MANUFACTURED TO TOLERANCES SUCH THAT THE CLEARANCE BETWEEN THE COVER AND FRAME WILL NOT EXCEED 1/8" AT ANY POINT AROUND THE CIRCUMFERENCE OF THE COVER. THE SEATING SURFACES BETWEEN THE COVER AND FRAME SHALL BE MACHINED SUCH THAT THESE SEATING SURFACES SHALL MAKE FULL CONTACT FOR THEIR FULL CIRCUMFERENCE TO PRECLUDE THE COVER FROM ROCKING IN THE FRAME.
- THE MANHOLE FRAME AND COVER SHALL BE MARKED WITH LETTERING INDICATING THE NAME OF THE MANUFACTURER AND THE YEAR WHEN THE COVER OR FRAME WAS CAST. THE COVER SHALL BE FURTHER IDENTIFIED WITH REGARDS TO OWNERSHIP USING LETTERS AT LEAST 1" IN HEIGHT. THIS IDENTIFICATION SHALL BE "CITY OF WICHITA SANITARY SEWER". THE TOP SURFACE OF THE COVER SHALL BE MANUFACTURED IN WITH CITY OF WICHITA DESIGN AS INDICATED ON THE DRAWINGS. SMOOTH BLOCKOUTS SHALL BE UTILIZED TO HIGHLIGHT THE LETTERING ON THE COVER SURFACE. THE TOTAL AREA OF SMOOTH SURFACE BLOCKOUT SHALL NOT EXCEED THE AREA AS INDICATED ON THE DRAWING. POSITIONING OF SMOOTH BLOCKOUTS AND LETTERING MAY VARY FROM THAT SHOWN ON THE DETAILED DRAWING.

REVISED: MARCH 2016

MANHOLE FRAME AND COVER (SANITARY SEWER)

CITY ENGINEER
GARY JANZEN, P.E.

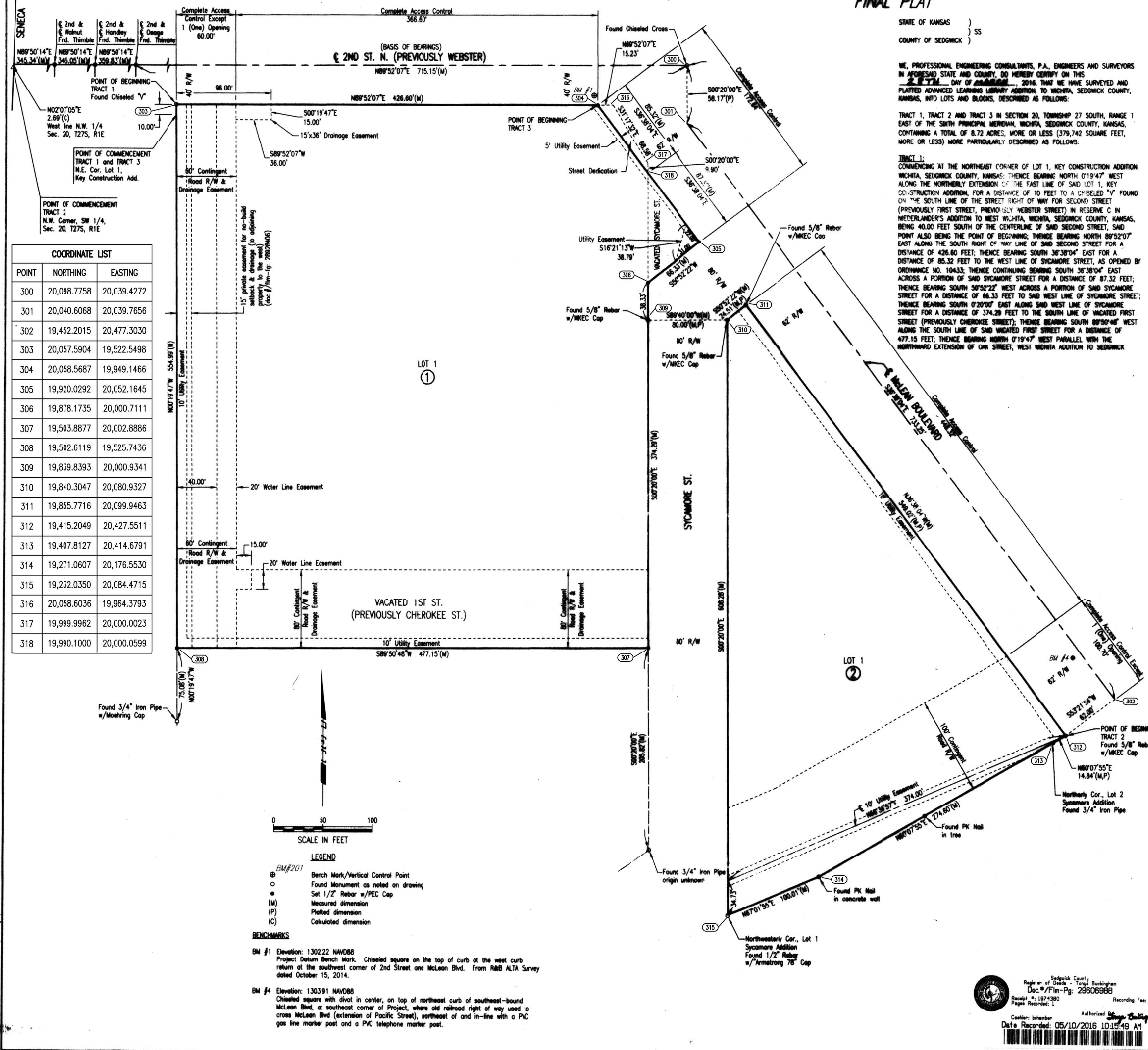
PROJECT NUMBER 2274 PPS	OCA NUMBER (607861)	DATE
CITY ENGINEER'S OFFICE CITY HALL - SEVENTH FLOOR 455 NORTH MAIN STREET WICHITA, KANSAS 67202-1620 (316) 268-4501		SHEET _ of _

CITY OF WICHITA
PUBLIC WORKS & UTILITIES
ENGINEERING DIVISION

ADVANCED LEARNING LIBRARY ADDITION

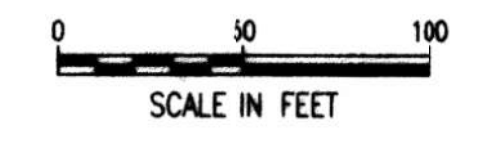
TO WICHITA, SEDGWICK COUNTY, KANSAS

FINAL PLAT



COORDINATE LIST

POINT	NORTHING	EASTING
300	20,098.7758	20,039.4272
301	20,040.6068	20,039.7656
302	19,452.2015	20,477.3030
303	20,057.5904	19,522.5498
304	20,058.5687	19,949.1466
305	19,920.0292	20,052.1645
306	19,878.1735	20,000.7111
307	19,503.8877	20,002.8886
308	19,502.6119	19,825.7436
309	19,839.8393	20,000.9341
310	19,840.3047	20,080.9327
311	19,855.7716	20,099.9463
312	19,452.2015	20,427.5511
313	19,407.8127	20,414.6791
314	19,221.0607	20,176.5530
315	19,232.0350	20,084.4715
316	20,038.6036	19,964.3793
317	19,999.9962	20,000.0023
318	19,990.1000	20,000.0599



- LEGEND**
- BM#201 Bench Mark/Vertical Control Point
 - Found Monument as noted on drawing
 - Set 1/2" Rubber w/PEC Cap
 - Measured dimension
 - Plotted dimension
 - Calculated dimension
- BENCHMARKS**
- BM #1 Elevation: 1302.22 NAVD88
Project Datum Bench mark. Chiseled square on the top of curb at the west curb return at the southwest corner of 2nd Street and McLean Blvd. From RMB ALTA Survey dated October 15, 2014.
 - BM #4 Elevation: 1303.91 NAVD88
Chiseled square with divot in center, on top of northeast curb of southeast-bound McLean Blvd. at southeast corner of Project, where old railroad right of way used to cross McLean Blvd (extension of Pacific Street), northwest of and in-line with a PC gas line marker post and a PVC telephone marker post.

STATE OF KANSAS } SS
 COUNTY OF SEDGWICK }

WE, PROFESSIONAL ENGINEERING CONSULTANTS, P.A., ENGINEERS AND SURVEYORS IN AFORESAID STATE AND COUNTY, DO HEREBY CERTIFY ON THIS 20 DAY OF March, 2016 THAT WE HAVE SURVEYED AND PLATTED ADVANCED LEARNING LIBRARY ADDITION TO WICHITA, SEDGWICK COUNTY, KANSAS, INTO LOTS AND BLOCKS, DESCRIBED AS FOLLOWS:

TRACT 1: TRACT 2 AND TRACT 3 IN SECTION 20, TOWNSHIP 27 SOUTH, RANGE 1 EAST OF THE SIXTH PRINCIPAL MERIDIAN, WICHITA, SEDGWICK COUNTY, KANSAS, CONTAINING A TOTAL OF 8.72 ACRES, MORE OR LESS (379,742 SQUARE FEET, MORE OR LESS) MORE PARTICULARLY DESCRIBED AS FOLLOWS:

TRACT 1: COMMENCING AT THE NORTHEAST CORNER OF LOT 1, KEY CONSTRUCTION ADDITION WICHITA, SEDGWICK COUNTY, KANSAS; THENCE BEARING NORTH 01°14'7" WEST ALONG THE NORTHERLY EXTENSION OF THE EAST LINE OF SAID LOT 1, KEY CONSTRUCTION ADDITION, FOR A DISTANCE OF 10 FEET TO A CHISELED "Y" FOUND ON THE SOUTH LINE OF THE STREET RIGHT OF WAY FOR SECOND STREET (PREVIOUSLY FIRST STREET, PREVIOUSLY WEBSTER STREET) IN RESERVE C IN NEDERLANDER'S ADDITION TO WEST WICHITA, WICHITA, SEDGWICK COUNTY, KANSAS, BEING 40.00 FEET SOUTH OF THE CENTERLINE OF SAID SECOND STREET; SAID POINT ALSO BEING THE POINT OF BEGINNING; THENCE BEARING NORTH 89°50'14" EAST ALONG THE SOUTH RIGHT OF WAY LINE OF SAID SECOND STREET FOR A DISTANCE OF 426.60 FEET; THENCE BEARING SOUTH 30°38'04" EAST FOR A DISTANCE OF 85.32 FEET TO THE WEST LINE OF SYCAMORE STREET, AS OPENED BY ORDINANCE NO. 10433; THENCE CONTINUING BEARING SOUTH 30°38'04" EAST ACROSS A PORTION OF SAID SYCAMORE STREET FOR A DISTANCE OF 87.32 FEET; THENCE BEARING SOUTH 50°52'22" WEST ACROSS A PORTION OF SAID SYCAMORE STREET FOR A DISTANCE OF 68.33 FEET TO SAID WEST LINE OF SYCAMORE STREET; THENCE BEARING SOUTH 02°00'07" EAST ALONG SAID WEST LINE OF SYCAMORE STREET FOR A DISTANCE OF 374.29 FEET TO THE SOUTH LINE OF WACATED FIRST STREET (PREVIOUSLY CHEROKEE STREET); THENCE BEARING SOUTH 89°50'46" WEST ALONG THE SOUTH LINE OF SAID WACATED FIRST STREET FOR A DISTANCE OF 477.15 FEET; THENCE BEARING NORTH 01°14'7" WEST PARALLEL WITH THE NORTHERLY EXTENSION OF ONE STREET, WEST WICHITA ADDITION TO SEDGWICK COUNTY, KANSAS, FOR A DISTANCE OF 454.99 FEET TO THE POINT OF BEGINNING; SAID TRACT 1 CONTAINING 6.10 ACRES, MORE OR LESS (265,918 SQUARE FEET, MORE OR LESS).

TRACT 2: A PORTION OF RESERVE B, WEST WICHITA ADDITION, WICHITA, SEDGWICK COUNTY, KANSAS, AND THE SOUTH HALF OF WACATED FIRST STREET (PREVIOUSLY CHEROKEE STREET) ADJOINING ON THE NORTH, TOGETHER WITH A PORTION OF RESERVE C, NEDERLANDER'S ADDITION TO WEST WICHITA, WICHITA, SEDGWICK COUNTY, KANSAS, AND THE NORTH HALF OF WACATED FIRST STREET (PREVIOUSLY CHEROKEE STREET) ADJOINING ON THE SOUTH, SAID PORTIONS LYING EAST OF SYCAMORE STREET, LYING SOUTHWEST OF RIVER VISTA VILLAGE, AN ADDITION TO WICHITA, SEDGWICK COUNTY, KANSAS, AND LYING NORTH OF SYCAMORE ADDITION TO WICHITA, KANSAS; SAID PORTIONS MORE PARTICULARLY DESCRIBED AS FOLLOWS: COMMENCING AT THE NORTHWEST CORNER OF THE SOUTHWEST QUARTER OF SECTION 20, TOWNSHIP 27 SOUTH, RANGE 1 EAST OF THE SIXTH PRINCIPAL MERIDIAN, WICHITA, SEDGWICK COUNTY, KANSAS; THENCE NORTH 27°02'05" EAST ALONG THE WEST LINE OF THE NORTHWEST QUARTER OF SAID SECTION 20 FOR A DISTANCE OF 2.89 FEET TO THE CENTERLINE OF SECOND STREET (PREVIOUSLY FIRST STREET, PREVIOUSLY WEBSTER STREET); THENCE BEARING NORTH 89°50'14" EAST ALONG SAID CENTERLINE OF SECOND STREET FOR A DISTANCE OF 340.54 FEET TO A TRIMBLE AT THE CENTERLINE OF WALNUT STREET; THENCE CONTINUING BEARING NORTH 89°50'14" EAST ALONG SAID CENTERLINE OF SECOND STREET FOR A DISTANCE OF 359.83 FEET TO A TRIMBLE AT THE CENTERLINE OF OSAGE STREET; THENCE BEARING NORTH 89°50'14" EAST ALONG SAID CENTERLINE OF SECOND STREET FOR A DISTANCE OF 715.15 FEET TO A CHISELED CROSS FOR THE CENTERLINE OF SYCAMORE STREET; THENCE BEARING SOUTH 02°00'07" EAST FOR A DISTANCE OF 58.17 FEET TO THE CENTERLINE OF THE RIGHT OF WAY FOR MCLEAN BOULEVARD AS PLATTED IN SAID RIVER VISTA VILLAGE; THENCE BEARING SOUTH 89°50'14" EAST ALONG SAID CENTERLINE OF SECOND STREET FOR A DISTANCE OF 733.25 FEET; THENCE BEARING SOUTH 53°21'56" WEST FOR A DISTANCE OF 82.00 FEET TO THE POINT OF BEGINNING, BEING A DEFLECTION IN THE SOUTHWESTERLY LINE OF THE STREET RIGHT OF WAY FOR MCLEAN BOULEVARD AS PLATTED IN SAID RIVER VISTA VILLAGE; THENCE BEARING NORTH 36°38'04" WEST ALONG THE SOUTHWESTERLY LINE OF THE STREET RIGHT OF WAY FOR MCLEAN BOULEVARD AS PLATTED IN SAID RIVER VISTA VILLAGE; THENCE BEARING NORTH 36°38'04" WEST ALONG THE SOUTHWESTERLY LINE OF THE STREET RIGHT OF WAY FOR MCLEAN BOULEVARD AS PLATTED IN SAID RIVER VISTA VILLAGE FOR A DISTANCE OF 349.02 FEET; THENCE BEARING SOUTH 89°52'22" WEST FOR A DISTANCE OF 24.31 FEET TO THE EAST LINE OF THE 80-FOOT WIDE STREET RIGHT OF WAY FOR SYCAMORE STREET; THENCE BEARING SOUTH 02°00'07" EAST ALONG EAST LINE OF SAID SYCAMORE STREET FOR A DISTANCE OF 608.28 FEET TO THE NORTHWESTERLY CORNER OF LOT 1, SYCAMORE ADDITION TO WICHITA, KANSAS; THENCE BEARING NORTH 67°01'55" EAST ALONG THE NORTHWESTERLY LINE OF SAID LOT 1, SYCAMORE ADDITION FOR A DISTANCE OF 100.01 FEET TO A DEFLECTION IN SAID NORTHWESTERLY LINE OF SAID LOT 1, SYCAMORE ADDITION; THENCE BEARING NORTH 89°52'22" EAST ALONG THE NORTHWESTERLY LINES OF LOTS 1 AND 2 IN SAID SYCAMORE ADDITION FOR A DISTANCE OF 274.60 FEET TO THE NORTHERLY CORNER OF SAID LOT 2, SYCAMORE ADDITION, BEING A DEFLECTION IN THE SOUTHWESTERLY RIGHT OF WAY LINE OF MCLEAN BOULEVARD AS PLATTED IN SAID RIVER VISTA VILLAGE; THENCE CONTINUING BEARING NORTH 89°52'22" EAST ALONG SAID RIGHT OF WAY LINE OF MCLEAN BOULEVARD FOR A DISTANCE OF 14.84 FEET TO THE POINT OF BEGINNING; SAID TRACT 2 CONTAINING 2.60 ACRES, MORE OR LESS (113,127 SQUARE FEET, MORE OR LESS).

TRACT 3: COMMENCING AT THE NORTHEAST CORNER OF LOT 1, KEY CONSTRUCTION ADDITION, WICHITA, SEDGWICK COUNTY, KANSAS; THENCE BEARING NORTH 01°14'7" WEST ALONG THE NORTHERLY EXTENSION OF THE EAST LINE OF SAID LOT 1, KEY CONSTRUCTION ADDITION, FOR A DISTANCE OF 10 FEET TO A CHISELED "Y" FOUND ON THE SOUTH LINE OF THE STREET RIGHT OF WAY FOR SECOND STREET (PREVIOUSLY FIRST STREET, PREVIOUSLY WEBSTER STREET) IN RESERVE C IN NEDERLANDER'S ADDITION TO WEST WICHITA, WICHITA, SEDGWICK COUNTY, KANSAS, BEING 40.00 FEET SOUTH OF THE CENTERLINE OF SAID SECOND STREET; THENCE BEARING NORTH 89°52'07" EAST ALONG THE SOUTH RIGHT OF WAY LINE OF SAID SECOND STREET FOR A DISTANCE OF 15.23 FEET TO A POINT 23 FEET SOUTHWEST OF THE CENTERLINE OF THE MIDLAND VALLEY RAILROAD, NOW ABANDONED, ALSO BEING A POINT ON THE SOUTHWEST RIGHT OF WAY LINE OF MCLEAN BOULEVARD, AS PLATTED IN RIVER VISTA VILLAGE, AN ADDITION TO WICHITA, SEDGWICK COUNTY, KANSAS; THENCE BEARING SOUTH 31°17'32" EAST ALONG THE SOUTHWEST RIGHT OF WAY LINE OF MCLEAN BOULEVARD, AS PLATTED IN SAID RIVER VISTA VILLAGE AND ALONG A LINE 23 FEET SOUTHWEST OF AND PARALLEL WITH SAID ABANDONED MIDLAND VALLEY RAILROAD FOR A DISTANCE OF 86.84 FEET TO THE WEST LINE OF SYCAMORE STREET, AS OPENED BY ORDINANCE NO. 10433; THENCE BEARING SOUTH 02°00'07" EAST ALONG SAID WEST LINE OF SYCAMORE STREET FOR A DISTANCE OF 9.80 FEET TO THE NORTHEAST CORNER OF TRACT 1; THENCE BEARING NORTH 36°38'04" WEST ALONG THE NORTHEAST LINE OF TRACT 1 FOR A DISTANCE OF 85.32 FEET TO THE POINT OF BEGINNING; SAID TRACT 3 CONTAINING 0.016 ACRES, MORE OR LESS (697 SQUARE FEET, MORE OR LESS).

TRACT 1: COMMENCING AT THE NORTHEAST CORNER OF LOT 1, KEY CONSTRUCTION ADDITION WICHITA, SEDGWICK COUNTY, KANSAS; THENCE BEARING NORTH 01°14'7" WEST ALONG THE NORTHERLY EXTENSION OF THE EAST LINE OF SAID LOT 1, KEY CONSTRUCTION ADDITION, FOR A DISTANCE OF 10 FEET TO A CHISELED "Y" FOUND ON THE SOUTH LINE OF THE STREET RIGHT OF WAY FOR SECOND STREET (PREVIOUSLY FIRST STREET, PREVIOUSLY WEBSTER STREET) IN RESERVE C IN NEDERLANDER'S ADDITION TO WEST WICHITA, WICHITA, SEDGWICK COUNTY, KANSAS, BEING 40.00 FEET SOUTH OF THE CENTERLINE OF SAID SECOND STREET; SAID POINT ALSO BEING THE POINT OF BEGINNING; THENCE BEARING NORTH 89°50'14" EAST ALONG THE SOUTH RIGHT OF WAY LINE OF SAID SECOND STREET FOR A DISTANCE OF 426.60 FEET; THENCE BEARING SOUTH 30°38'04" EAST FOR A DISTANCE OF 85.32 FEET TO THE WEST LINE OF SYCAMORE STREET, AS OPENED BY ORDINANCE NO. 10433; THENCE CONTINUING BEARING SOUTH 30°38'04" EAST ACROSS A PORTION OF SAID SYCAMORE STREET FOR A DISTANCE OF 87.32 FEET; THENCE BEARING SOUTH 50°52'22" WEST ACROSS A PORTION OF SAID SYCAMORE STREET FOR A DISTANCE OF 68.33 FEET TO SAID WEST LINE OF SYCAMORE STREET; THENCE BEARING SOUTH 02°00'07" EAST ALONG SAID WEST LINE OF SYCAMORE STREET FOR A DISTANCE OF 374.29 FEET TO THE SOUTH LINE OF WACATED FIRST STREET (PREVIOUSLY CHEROKEE STREET); THENCE BEARING SOUTH 89°50'46" WEST ALONG THE SOUTH LINE OF SAID WACATED FIRST STREET FOR A DISTANCE OF 477.15 FEET; THENCE BEARING NORTH 01°14'7" WEST PARALLEL WITH THE NORTHERLY EXTENSION OF ONE STREET, WEST WICHITA ADDITION TO SEDGWICK COUNTY, KANSAS, FOR A DISTANCE OF 454.99 FEET TO THE POINT OF BEGINNING; SAID TRACT 1 CONTAINING 6.10 ACRES, MORE OR LESS (265,918 SQUARE FEET, MORE OR LESS).

TRACT 2: A PORTION OF RESERVE B, WEST WICHITA ADDITION, WICHITA, SEDGWICK COUNTY, KANSAS, AND THE SOUTH HALF OF WACATED FIRST STREET (PREVIOUSLY CHEROKEE STREET) ADJOINING ON THE NORTH, TOGETHER WITH A PORTION OF RESERVE C, NEDERLANDER'S ADDITION TO WEST WICHITA, WICHITA, SEDGWICK COUNTY, KANSAS, AND THE NORTH HALF OF WACATED FIRST STREET (PREVIOUSLY CHEROKEE STREET) ADJOINING ON THE SOUTH, SAID PORTIONS LYING EAST OF SYCAMORE STREET, LYING SOUTHWEST OF RIVER VISTA VILLAGE, AN ADDITION TO WICHITA, SEDGWICK COUNTY, KANSAS, AND LYING NORTH OF SYCAMORE ADDITION TO WICHITA, KANSAS; SAID PORTIONS MORE PARTICULARLY DESCRIBED AS FOLLOWS: COMMENCING AT THE NORTHWEST CORNER OF THE SOUTHWEST QUARTER OF SECTION 20, TOWNSHIP 27 SOUTH, RANGE 1 EAST OF THE SIXTH PRINCIPAL MERIDIAN, WICHITA, SEDGWICK COUNTY, KANSAS; THENCE NORTH 27°02'05" EAST ALONG THE WEST LINE OF THE NORTHWEST QUARTER OF SAID SECTION 20 FOR A DISTANCE OF 2.89 FEET TO THE CENTERLINE OF SECOND STREET (PREVIOUSLY FIRST STREET, PREVIOUSLY WEBSTER STREET); THENCE BEARING NORTH 89°50'14" EAST ALONG SAID CENTERLINE OF SECOND STREET FOR A DISTANCE OF 340.54 FEET TO A TRIMBLE AT THE CENTERLINE OF WALNUT STREET; THENCE CONTINUING BEARING NORTH 89°50'14" EAST ALONG SAID CENTERLINE OF SECOND STREET FOR A DISTANCE OF 359.83 FEET TO A TRIMBLE AT THE CENTERLINE OF OSAGE STREET; THENCE BEARING NORTH 89°50'14" EAST ALONG SAID CENTERLINE OF SECOND STREET FOR A DISTANCE OF 715.15 FEET TO A CHISELED CROSS FOR THE CENTERLINE OF SYCAMORE STREET; THENCE BEARING SOUTH 02°00'07" EAST FOR A DISTANCE OF 58.17 FEET TO THE CENTERLINE OF THE RIGHT OF WAY FOR MCLEAN BOULEVARD AS PLATTED IN SAID RIVER VISTA VILLAGE; THENCE BEARING SOUTH 89°50'14" EAST ALONG SAID CENTERLINE OF SECOND STREET FOR A DISTANCE OF 733.25 FEET; THENCE BEARING SOUTH 53°21'56" WEST FOR A DISTANCE OF 82.00 FEET TO THE POINT OF BEGINNING, BEING A DEFLECTION IN THE SOUTHWESTERLY LINE OF THE STREET RIGHT OF WAY FOR MCLEAN BOULEVARD AS PLATTED IN SAID RIVER VISTA VILLAGE; THENCE BEARING NORTH 36°38'04" WEST ALONG THE SOUTHWESTERLY LINE OF THE STREET RIGHT OF WAY FOR MCLEAN BOULEVARD AS PLATTED IN SAID RIVER VISTA VILLAGE; THENCE BEARING NORTH 36°38'04" WEST ALONG THE SOUTHWESTERLY LINE OF THE STREET RIGHT OF WAY FOR MCLEAN BOULEVARD AS PLATTED IN SAID RIVER VISTA VILLAGE FOR A DISTANCE OF 349.02 FEET; THENCE BEARING SOUTH 89°52'22" WEST FOR A DISTANCE OF 24.31 FEET TO THE EAST LINE OF THE 80-FOOT WIDE STREET RIGHT OF WAY FOR SYCAMORE STREET; THENCE BEARING SOUTH 02°00'07" EAST ALONG EAST LINE OF SAID SYCAMORE STREET FOR A DISTANCE OF 608.28 FEET TO THE NORTHWESTERLY CORNER OF LOT 1, SYCAMORE ADDITION TO WICHITA, KANSAS; THENCE BEARING NORTH 67°01'55" EAST ALONG THE NORTHWESTERLY LINE OF SAID LOT 1, SYCAMORE ADDITION FOR A DISTANCE OF 100.01 FEET TO A DEFLECTION IN SAID NORTHWESTERLY LINE OF SAID LOT 1, SYCAMORE ADDITION; THENCE BEARING NORTH 89°52'22" EAST ALONG THE NORTHWESTERLY LINES OF LOTS 1 AND 2 IN SAID SYCAMORE ADDITION FOR A DISTANCE OF 274.60 FEET TO THE NORTHERLY CORNER OF SAID LOT 2, SYCAMORE ADDITION, BEING A DEFLECTION IN THE SOUTHWESTERLY RIGHT OF WAY LINE OF MCLEAN BOULEVARD AS PLATTED IN SAID RIVER VISTA VILLAGE; THENCE CONTINUING BEARING NORTH 89°52'22" EAST ALONG SAID RIGHT OF WAY LINE OF MCLEAN BOULEVARD FOR A DISTANCE OF 14.84 FEET TO THE POINT OF BEGINNING; SAID TRACT 2 CONTAINING 2.60 ACRES, MORE OR LESS (113,127 SQUARE FEET, MORE OR LESS).

TRACT 3: COMMENCING AT THE NORTHEAST CORNER OF LOT 1, KEY CONSTRUCTION ADDITION, WICHITA, SEDGWICK COUNTY, KANSAS; THENCE BEARING NORTH 01°14'7" WEST ALONG THE NORTHERLY EXTENSION OF THE EAST LINE OF SAID LOT 1, KEY CONSTRUCTION ADDITION, FOR A DISTANCE OF 10 FEET TO A CHISELED "Y" FOUND ON THE SOUTH LINE OF THE STREET RIGHT OF WAY FOR SECOND STREET (PREVIOUSLY FIRST STREET, PREVIOUSLY WEBSTER STREET) IN RESERVE C IN NEDERLANDER'S ADDITION TO WEST WICHITA, WICHITA, SEDGWICK COUNTY, KANSAS, BEING 40.00 FEET SOUTH OF THE CENTERLINE OF SAID SECOND STREET; THENCE BEARING NORTH 89°52'07" EAST ALONG THE SOUTH RIGHT OF WAY LINE OF SAID SECOND STREET FOR A DISTANCE OF 15.23 FEET TO A POINT 23 FEET SOUTHWEST OF THE CENTERLINE OF THE MIDLAND VALLEY RAILROAD, NOW ABANDONED, ALSO BEING A POINT ON THE SOUTHWEST RIGHT OF WAY LINE OF MCLEAN BOULEVARD, AS PLATTED IN RIVER VISTA VILLAGE, AN ADDITION TO WICHITA, SEDGWICK COUNTY, KANSAS; THENCE BEARING SOUTH 31°17'32" EAST ALONG THE SOUTHWEST RIGHT OF WAY LINE OF MCLEAN BOULEVARD, AS PLATTED IN SAID RIVER VISTA VILLAGE AND ALONG A LINE 23 FEET SOUTHWEST OF AND PARALLEL WITH SAID ABANDONED MIDLAND VALLEY RAILROAD FOR A DISTANCE OF 86.84 FEET TO THE WEST LINE OF SYCAMORE STREET, AS OPENED BY ORDINANCE NO. 10433; THENCE BEARING SOUTH 02°00'07" EAST ALONG SAID WEST LINE OF SYCAMORE STREET FOR A DISTANCE OF 9.80 FEET TO THE NORTHEAST CORNER OF TRACT 1; THENCE BEARING NORTH 36°38'04" WEST ALONG THE NORTHEAST LINE OF TRACT 1 FOR A DISTANCE OF 85.32 FEET TO THE POINT OF BEGINNING; SAID TRACT 3 CONTAINING 0.016 ACRES, MORE OR LESS (697 SQUARE FEET, MORE OR LESS).

FEMA FLOODPLAIN AND REGULATORY FLOODWAY BOUNDARIES ARE SUBJECT TO PERIODIC CHANGE, AND SUCH CHANGE MAY AFFECT THE INTENDED LAND USE WITHIN THE SUBDIVISION.

A DRAINAGE PLAN HAS BEEN APPROVED FOR THIS PLAT. ALL DRAINAGE EASEMENTS, RIGHTS-OF-WAY, OR RESERVES SHALL REMAIN AT ESTABLISHED GRADES AND UNOBTSTRUCTED TO ALLOW FOR THE CONVEYANCE OF STORMWATER, UNLESS MODIFIED WITH THE APPROVAL OF THE CITY ENGINEER.

KNOW ALL MEN BY THESE PRESENTS THAT WE, THE UNDERSIGNED PROPERTY OWNERS OF THE LAND AS ABOVE SET FORTH IN THE SURVEYOR'S CERTIFICATE, HAVE CAUSED THE LAND TO BE SURVEYED AND PLATTED INTO LOTS AND BLOCKS, THE SAME TO BE KNOWN AS ADVANCED LEARNING LIBRARY ADDITION, TO WICHITA, SEDGWICK COUNTY, KANSAS.

OWNER: CITY OF WICHITA, KANSAS, A MUNICIPAL CORPORATION

Jeff Longwell
JEFF LONGWELL, MAYOR

STATE OF KANSAS } SS
 COUNTY OF SEDGWICK }

THIS INSTRUMENT WAS ACKNOWLEDGED BEFORE ME THIS 20 DAY OF March, 2016, BY JEFF LONGWELL, MAYOR OF THE CITY OF WICHITA, KANSAS, A MUNICIPAL CORPORATION.

Jan Edwards
JANIS EDWARDS, NOTARY PUBLIC
MY APPOINTMENT EXPIRES 12-19-18

THIS PLAT OF ADVANCED LEARNING LIBRARY ADDITION HAS BEEN SUBMITTED TO AND APPROVED BY THE WICHITA-SEDGWICK COUNTY METROPOLITAN AREA PLANNING COMMISSION, WICHITA, KANSAS APPROVED THE 19 DAY OF NOVEMBER, 2014, 2014

Carol Chapman Abougent
CAROL CHAPMAN ABONGENT, CHAIRMAN

Dale Miller
DALE MILLER, SECRETARY

REVIEWED IN ACCORDANCE WITH K.S.A. 58-2005 ON THIS 30th DAY OF March, 2016.

Trina
TRINA L. ROBELLO, LS #246
DEPUTY COUNTY SURVEYOR
SEDGWICK COUNTY, KANSAS

THIS PLAT IS APPROVED AND ALL DEDICATIONS SHOWN HEREON ACCEPTED BY THE CITY COUNCIL OF THE CITY OF WICHITA, KANSAS, THIS 19 DAY OF March, 2016.

Jeff Longwell
JEFF LONGWELL, MAYOR

Karen Siblett
KAREN SIBLETT, CITY CLERK

ENTERED ON TRANSFER RECORD THIS 10th DAY OF May, 2016.

Kelly Arnold
KELLY ARNOLD, COUNTY CLERK

THIS IS TO CERTIFY THAT THIS INSTRUMENT WAS FILED FOR RECORD IN THE REGISTER OF DEEDS OFFICE AT WICHITA, KANSAS, ON THE 10th DAY OF May, 2016.

Tonya Buckingham
TONYA BUCKINGHAM, REGISTER OF DEEDS

JUDY J. PARET
Judy J. Paret, DEPUTY



ERNEST CHIU JR., P.E.#1407
PROFESSIONAL ENGINEERING CONSULTANTS, P.A.

ALL PUBLIC EASEMENTS LYING WITHIN ABOVE DESCRIBED TRACT OF LAND ARE HEREBY VACATED AND REPLATED BY VIRTUE OF K.S.A. 12-5126, AS AMENDED.

DRAINAGE EASEMENTS AS SHOWN FOR THE CONSTRUCTION AND MAINTENANCE OF STORM WATER UTILITIES ARE HEREBY GRANTED.

WATER LINE EASEMENTS AS SHOWN FOR THE CONSTRUCTION AND MAINTENANCE OF WATER UTILITIES ARE HEREBY GRANTED.

UTILITY EASEMENTS AS SHOWN FOR THE CONSTRUCTION AND MAINTENANCE OF PUBLIC UTILITIES ARE HEREBY GRANTED. NO SIGNS, LIGHT POLES, PRIVATE DRAINAGE SYSTEMS, WASTEWATER TREATMENT SYSTEMS OR OTHER STRUCTURES SHALL BE LOCATED WITHIN PUBLIC UTILITY EASEMENTS.

THE STREET IS HEREBY DEDICATED TO AND FOR THE USE OF THE PUBLIC.

THE CONTINGENT STREET DEDICATIONS SHALL BECOME EFFECTIVE IN THE EVENT THAT THE CITY DETERMINES A NEED FOR THE RIGHT-OF-WAY FOR ANY STREET-RELATED PURPOSES.

ALL ADJUTERS' RIGHT OF ACCESS TO AND FROM 2ND STREET AND MCLEAN BOULEVARD ARE HEREBY GRANTED TO THE APPROPRIATE GOVERNING BODY; PROVIDED HOWEVER THAT LOT 1, BLOCK 1, SHALL HAVE ACCESS TO 2ND STREET AT ONE (1) LOCATION AND THAT LOT 1, BLOCK 2, SHALL HAVE ACCESS TO MCLEAN BOULEVARD AT ONE (1) LOCATION AS SHOWN.



P.E.C. PROFESSIONAL ENGINEERING CONSULTANTS, P.A.
 303 SOUTH TOPEKA WICHITA, KS 67202
 316-262-2891 www.pcec.com

PROJECT NO: 14016.000
 DATE: 12/23/15
 DRAWN BY: CSJ/GAE
 CHK'D BY:

CITY OF WICHITA

ADVANCED LEARNING LIBRARY

McLean & 2nd Street Wichita, KS

MARK	DATE	DESCRIPTION
12	8/5/16	ASI 001
6	8/16/16	RFI NO. 4
11	6/7/16	CITY COMMENTS
6	4/7/16	ADDENDUM NO. 6
5	4/5/16	ADDENDUM NO. 5
3	3/31/16	ADDENDUM NO. 3

PLAT

PROJECT NO: 14016.000
 DATE: 12/23/15
 DRAWN BY: CSJ/GAE
 CHK'D BY:

C2.3

SHEET OF

Plat 257-2, 05-28-2016, 8:40 AM, by: P.E.C. (LSJ/GAE)
 U:\Working\2015\257-2\257-202 Final Plat.dwg
 Saved: 05-28-2016, 8:40 AM, by: P.E.C. (LSJ/GAE)
 Printed: 05-28-2016, 8:40 AM, by: P.E.C. (LSJ/GAE)
 U:\Working\2015\257-2\257-202 Final Plat.dwg



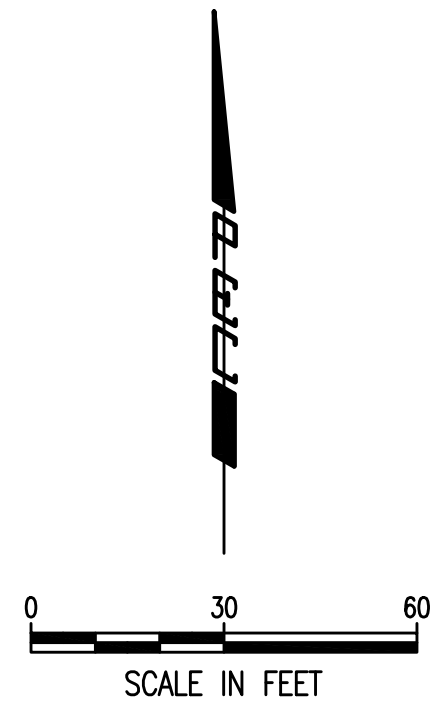
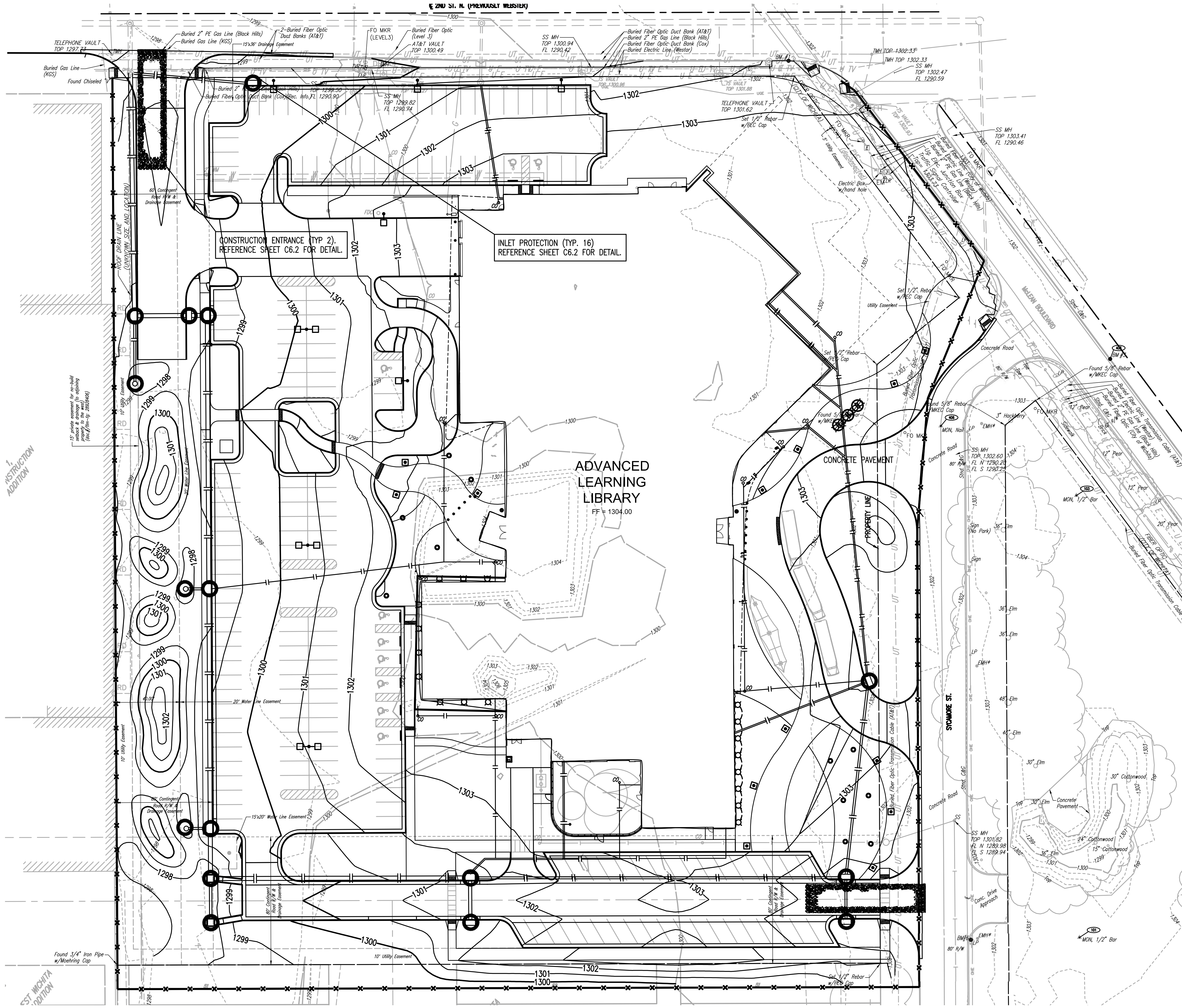
© 2015 GLMV Architecture, Inc.
All work herein is the exclusive property of GLMV Architecture, Inc. and is not to be copied or used in any way without the express written consent of GLMV Architecture, Inc. All drawings, specifications, ideas, designs and arrangements appearing herein constitute the original and unpublished work of GLMV Architecture, Inc.

CITY OF WICHITA
ADVANCED LEARNING LIBRARY
McLean & 2nd Street Wichita, KS

MARK	DATE	DESCRIPTION
12	8/5/16	ASI 001
6	6/8/16	RFI NO. 4
11	6/7/16	CITY COMMENTS
6	4/7/16	ADDENDUM NO. 6
5	4/5/16	ADDENDUM NO. 5
3	3/31/16	ADDENDUM NO. 3

EROSION CONTROL PLAN

PROJECT NO: 14016.000
DATE: 12/23/15
DRAWN BY: CSI, GAE
CHK'D BY: MCV
C6.1
SHEET OF



- LEGEND**
-  PROPOSED CURB INLET PROTECTION
 -  STABILIZED CONSTRUCTION ENTRANCE (FINAL LOCATION DETERMINED BY CONTRACTOR)
 -  SILT FENCE BARRIERS

- NOTES**
- THE EROSION CONTROL DEVICES SHOWN ON THIS SHEET ARE CONSIDERED MINIMUM STANDARDS. WHENEVER SEDIMENT ENTERS STREETS, STORM SEWERS, DITCHES, OR PONDS, THE CONTRACTOR WILL INSTALL ADDITIONAL DEVICES AS NEEDED TO CORRECT THE PROBLEM.
 - THE EROSION CONTROL DEVICES SHOWN HEREON MUST BE IN PLACE AT ALL TIMES DURING CONSTRUCTION UNTIL SUCH TIME AS THE SITE IS REESTABLISHED WITH PAVING OR GRASS. THE CONTRACTOR SHALL INSTALL TEMPORARY OR PERMANENT SEED IN ACCORDANCE WITH ATTACHMENT "A" OF THE KDHE NOTICE OF INTENT PERMIT.
 - THE CONTRACTOR SHALL CLEAN UP ANY MUD INADVERTENTLY TRACKED ONTO ANY STREET AT THE END OF EACH DAY'S WORK.
 - THE EROSION CONTROL PLAN IS CONSIDERED A DYNAMIC PLAN. THE CONTRACTOR MAY MAKE CHANGES AS NECESSARY TO MEET PERMIT REQUIREMENTS. ANY CHANGES OR DELETION SHALL BE RECORDED AND KEPT ON SITE AT ALL TIMES.
 - ANY FINES IMPOSED UPON THE OWNER BY THE KANSAS DEPARTMENT OF HEALTH AND ENVIRONMENT (KDHE) DUE TO IMPROPER EROSION CONTROL PRACTICES SHALL BE REIMBURSED BY THE CONTRACTOR.
 - CONTAMINATED SOILS SHALL BE IMMEDIATELY PLACED IN TRUCKS FOR HAULING OFF SITE. NO CONTAMINATED SOILS SHALL BE STOCKPILED ON SITE. EROSION CONTROL MEASURES TO AVOID THE DISCHARGE OF CONTAMINANTS SHALL BE IN ACCORDANCE WITH THE GENERAL NPDES PERMIT PART 7.

PROJECT DISTURBED AREA = 6.8 ACRES.

INSPECTION AND MAINTENANCE:
SILT FENCE DITCH CHECKS SHOULD BE INSPECTED EVERY 7 DAYS AND WITHIN 24 HOURS OF A RAINFALL OF 1/2" OR MORE.

Saved: 06/24/2016 10:56:46 AM by GAE
 Plot: 11/04/2016 12:20:15 27% Plot by GAE
 US: Wichita-Forest(2013)134831(001)Wichita(Overlays)134831-001-C6.1 EROSION CONTROL PLAN