

FHWA REGION NO.	STATE	PROJECT NUMBER	FISCAL YEAR	SHEET NUMBER	TOTAL SHEETS
7	KANSAS	87N-0195-01	2001	57	127

BY	DATE

REFERENCES NOTED	REFERENCES CHECKED

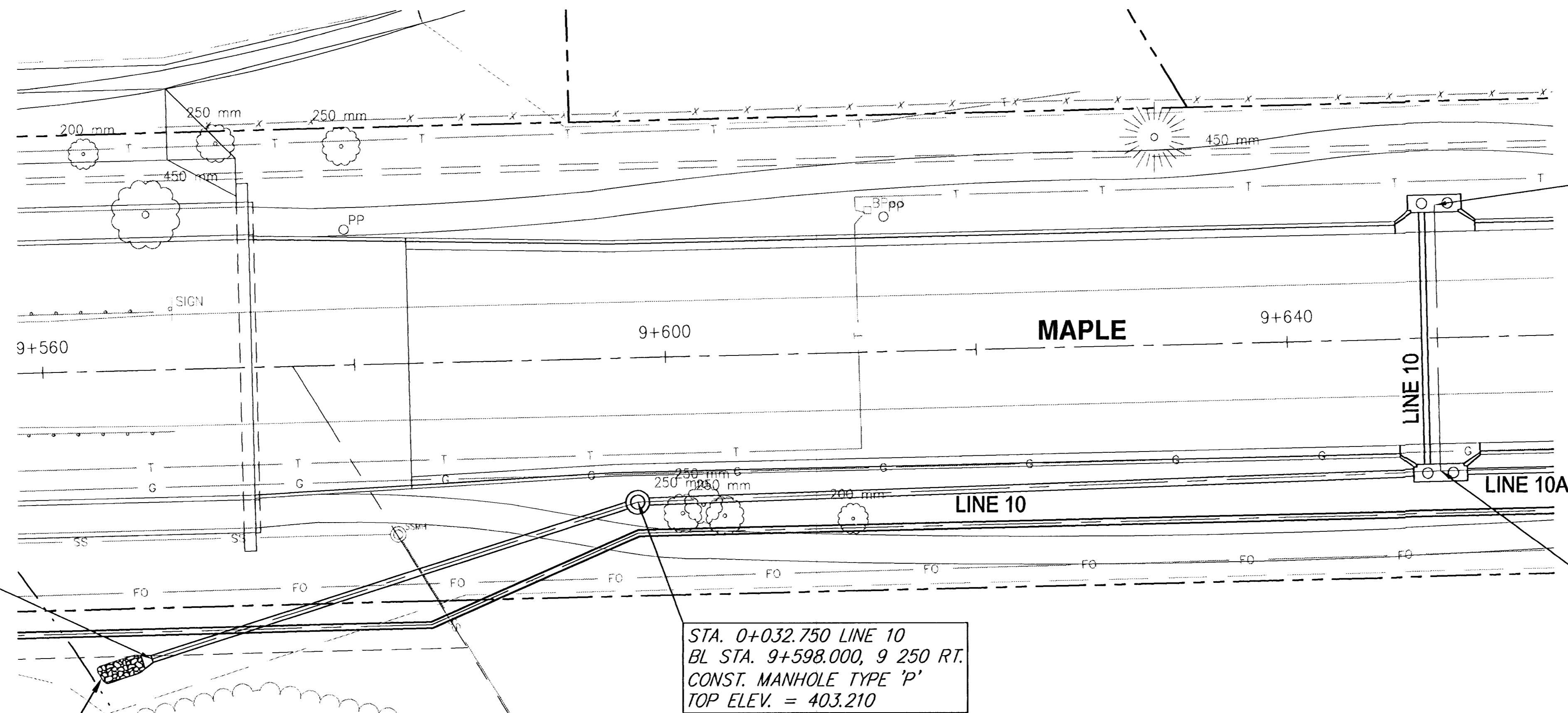
STA. 0+000 LINE 10
BL STA. 9+566.596, 18 533 RT.
INSTALL 450mm END SECTION.

INSTALL 7.7 S.M. LIGHT
STONE RIP-RAP

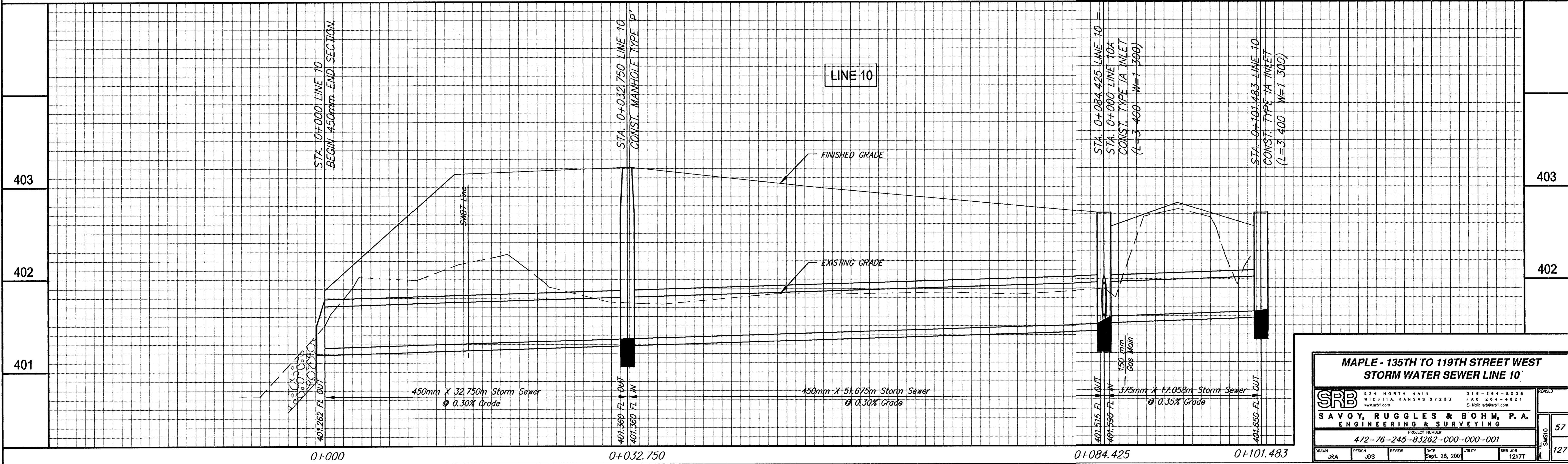
STA. 0+032.750 LINE 10
BL STA. 9+598.000, 9 250 RT.
CONST. MANHOLE TYPE 'P'
TOP ELEV. = 403.210

STA. 0+084.425 LINE 10
BL STA. 9+649.873, 8 529 RT. =
STA. 0+000 LINE 10A
CONST. TYPE IA INLET
(L=3 400 W=1 300)
TOP ELEV. = 402.717

STA. 0+101.483 LINE 10
BL STA. 9+649.685, 8 529 LT.
CONST. TYPE IA INLET
(L=3 400 W=1 300)
TOP ELEV. = 402.717



SCALE
5 0 5 10
PLAN: Lat. & Long. (meters)



**MAPLE - 135TH TO 119TH STREET WEST
STORM WATER SEWER LINE 10**

SRB
SAVOY, RUGGLES & BOHM, P.A.
ENGINEERING & SURVEYING

PROJECT NUMBER
472-76-245-83262-000-000-001

DESIGNED: JRA
CHECKED: JDS
DATE: Sept. 28, 2001
UTILITY
JOB NO: 1217T

REVISIONS
57
127