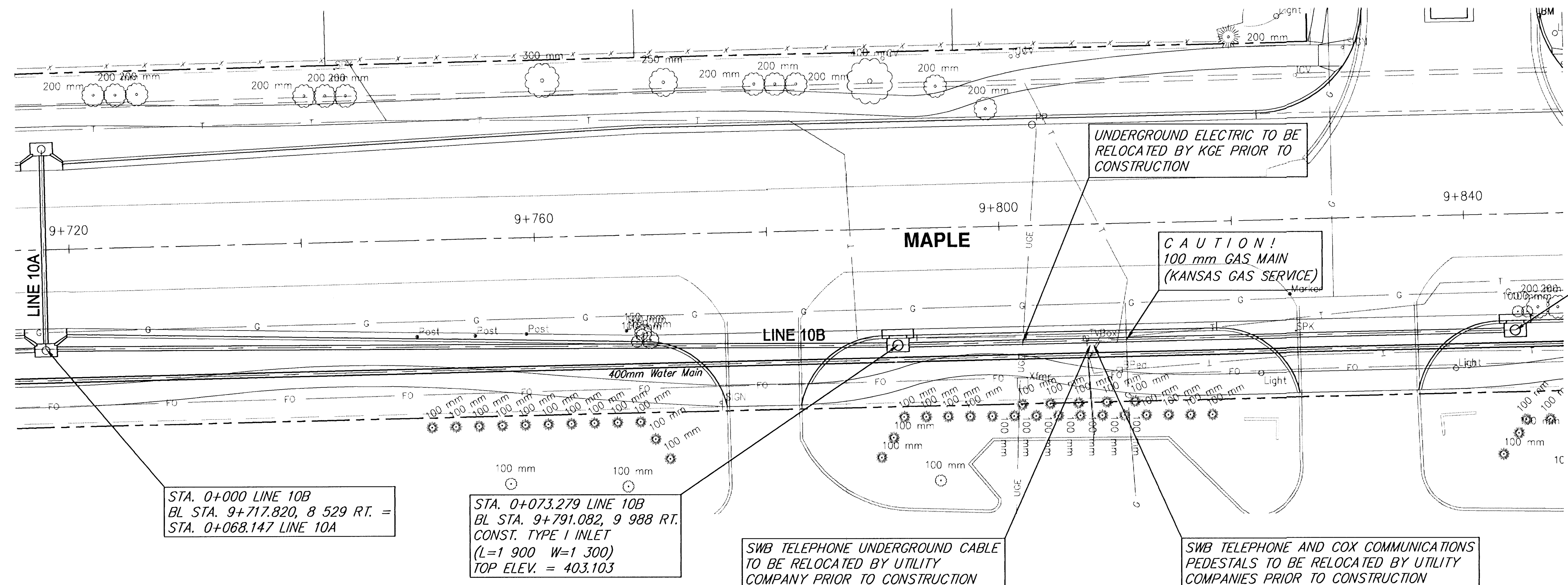


FHWA REGION NO.	STATE	PROJECT NUMBER	FISCAL YEAR	SHEET NUMBER	TOTAL SHEETS
7	KANSAS	87N-0195-01	2001	59	127

BY	DATE
REFERENCES NOTED	
REFERENCES CHECKED	



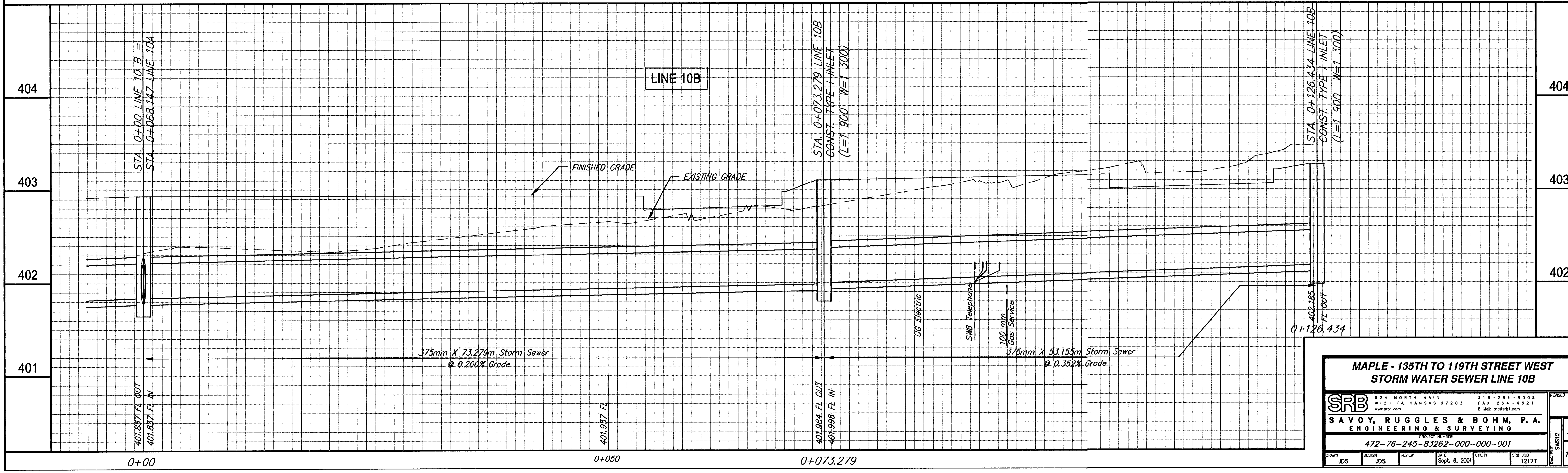
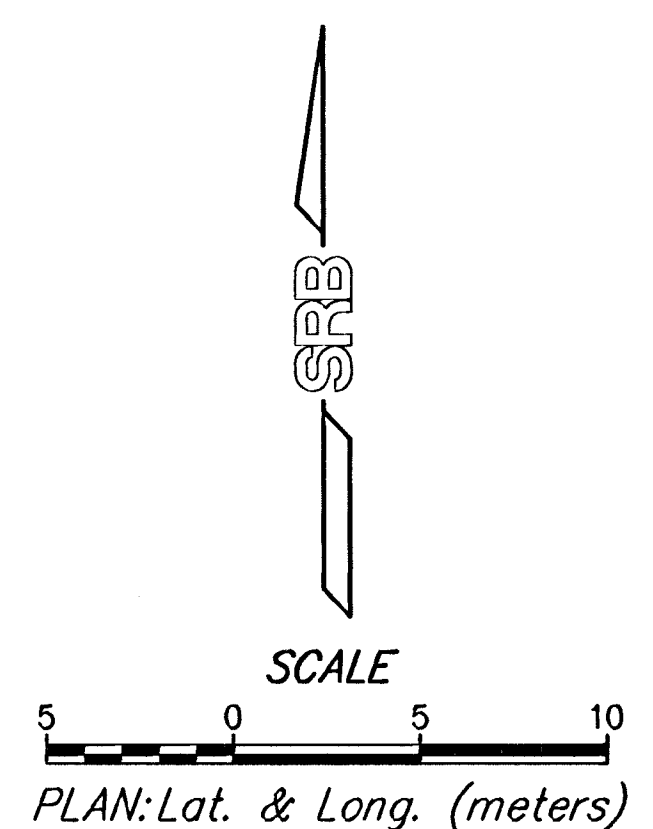
STA. 0+000 LINE 10B  
BL STA. 9+717.820, 8 529 RT. =  
STA. 0+068.147 LINE 10A

STA. 0+073.279 LINE 10B  
BL STA. 9+791.082, 9 988 RT.  
CONST. TYPE I INLET  
(L=1 900 W=1 300)  
TOP ELEV. = 403.103

SWB TELEPHONE UNDERGROUND CABLE  
TO BE RELOCATED BY UTILITY  
COMPANY PRIOR TO CONSTRUCTION

SWB TELEPHONE AND COX COMMUNICATIONS  
PEDESTALS TO BE RELOCATED BY UTILITY  
COMPANIES PRIOR TO CONSTRUCTION

STA. 0+126.434 LINE 10B  
BL STA. 9+844.237, 9 988 RT.  
CONST. TYPE I INLET  
(L=1 900 W=1 300)  
TOP ELEV. = 403.273



**MAPLE - 135TH TO 119TH STREET WEST  
STORM WATER SEWER LINE 10B**

**SRB**  
SAVOY, RUGGLES & BOHM, P.A.  
ENGINEERING & SURVEYING

924 NORTH MAIN  
WICHITA, KANSAS 67203  
www.srb.com

318-264-8009  
FAX 318-264-4921  
E-Mail: srbsrb@srbi.com

PROJECT NUMBER  
472-76-245-83262-000-000-001

DATE  
Sept. 6, 2001

UTILITY  
SRB JOB  
1217T

REVISION  
59

127