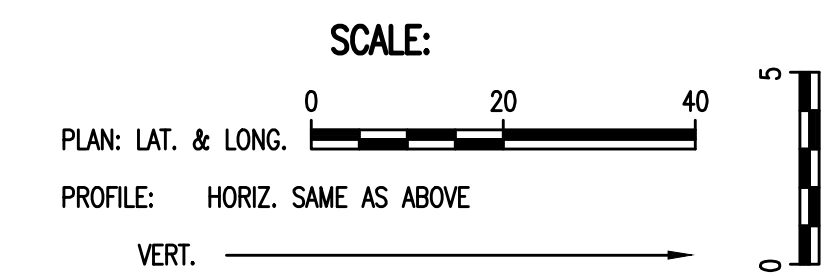
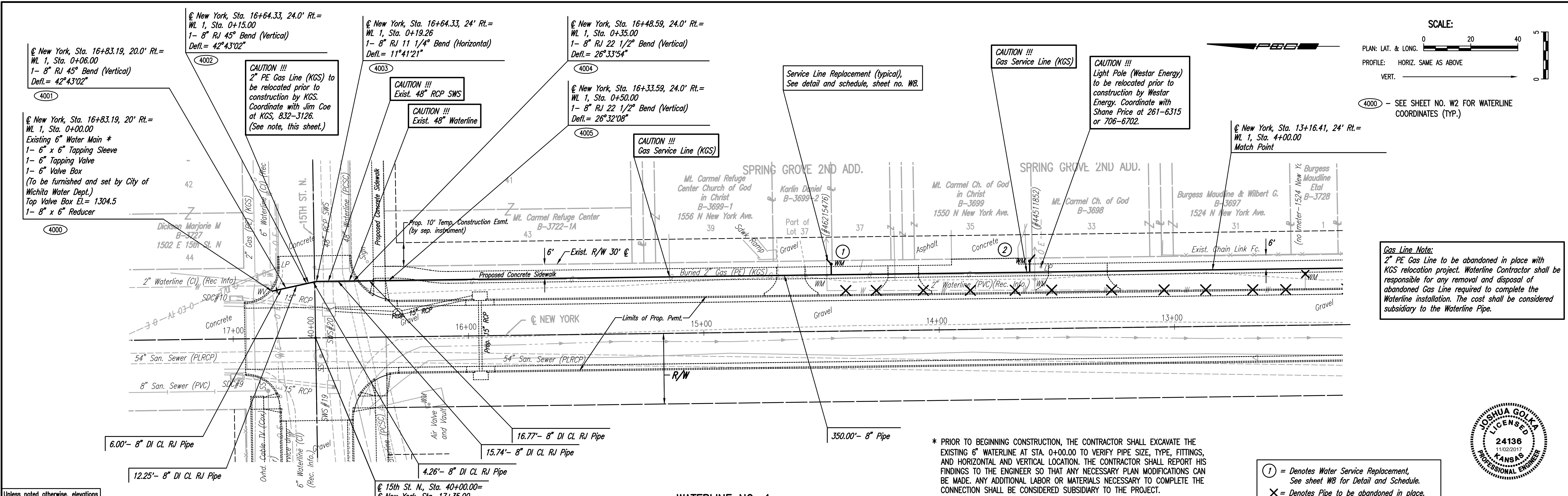


|      |         |         |
|------|---------|---------|
| PLAN | CHECKED | CHECKED |
| BY   |         |         |
| DATE |         |         |

|         |         |         |
|---------|---------|---------|
| PROFILE | CHECKED | CHECKED |
| BY      |         |         |
| DATE    |         |         |

Saved: 11-01-2017 10:02:46 AM by CSI  
 Plot Scale: 1" = 11'-0" - 2017 3:14:02 PM by CSI  
 U:\Wichita-Civil\2016\160312\006\Wm\Drawings\160312-006-WD3-WATERLINE NO. 1

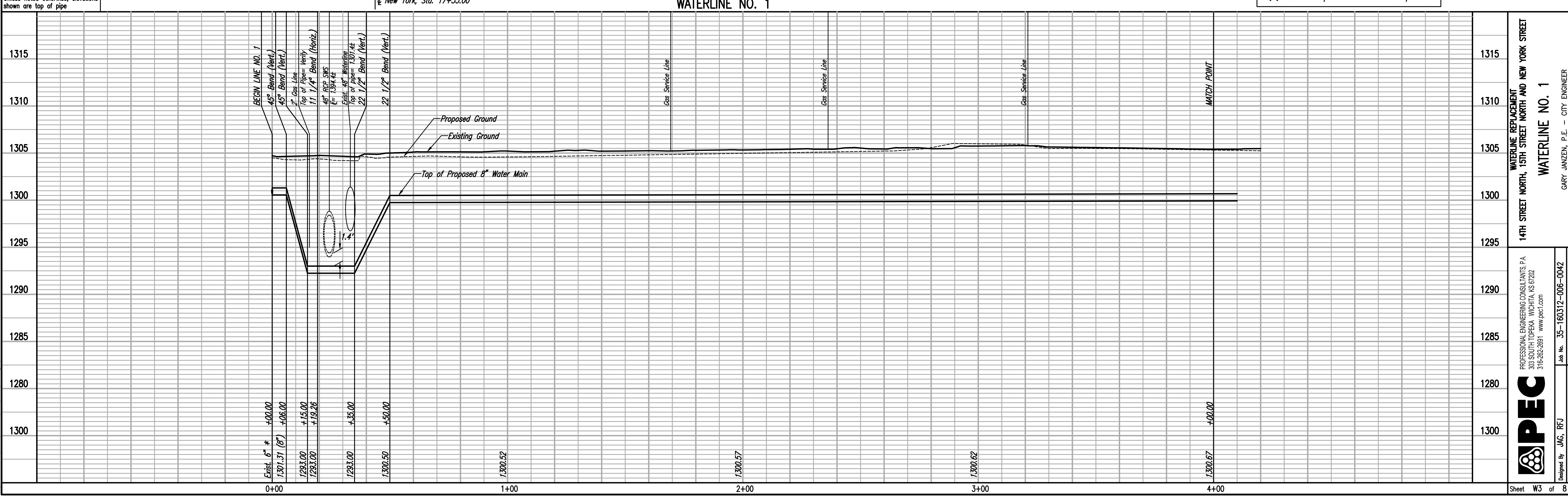


4000 - SEE SHEET NO. W2 FOR WATERLINE COORDINATES (TYP.)

**Gas Line Note:**  
 2" PE Gas Line to be abandoned in place with KGS relocation project. Waterline Contractor shall be responsible for any removal and disposal of abandoned Gas Line required to complete the Waterline installation. The cost shall be considered subsidiary to the Waterline Pipe.



① = Denotes Water Service Replacement, See sheet W8 for Detail and Schedule.  
 X = Denotes Pipe to be abandoned in place.



WATERLINE REPLACEMENT  
 14TH STREET NORTH, 15TH STREET NORTH AND NEW YORK STREET  
 WATERLINE NO. 1

DESIGNED BY: JAC, RFJ  
 DRAWN BY: CSI, KTD

Job No. 35-160312-006-0042  
 Date: JULY 2017

GARY JANZEN, P.E. - CITY ENGINEER  
 CITY OF WICHITA PROJECT NO. 448-90827

PROFESSIONAL ENGINEERING CONSULTANTS P.A.  
 303 SOUTH TOPEKA WICHITA, KS 67202  
 316-262-2691 www.pec1.com

PEC

Sheet W3 of 8