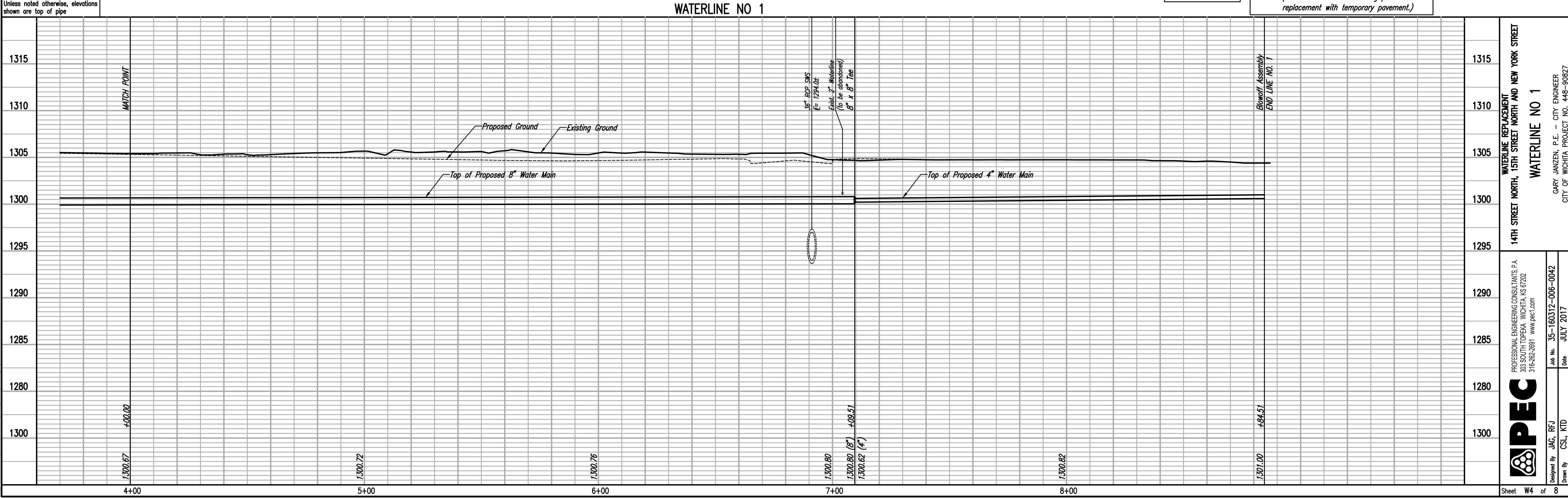
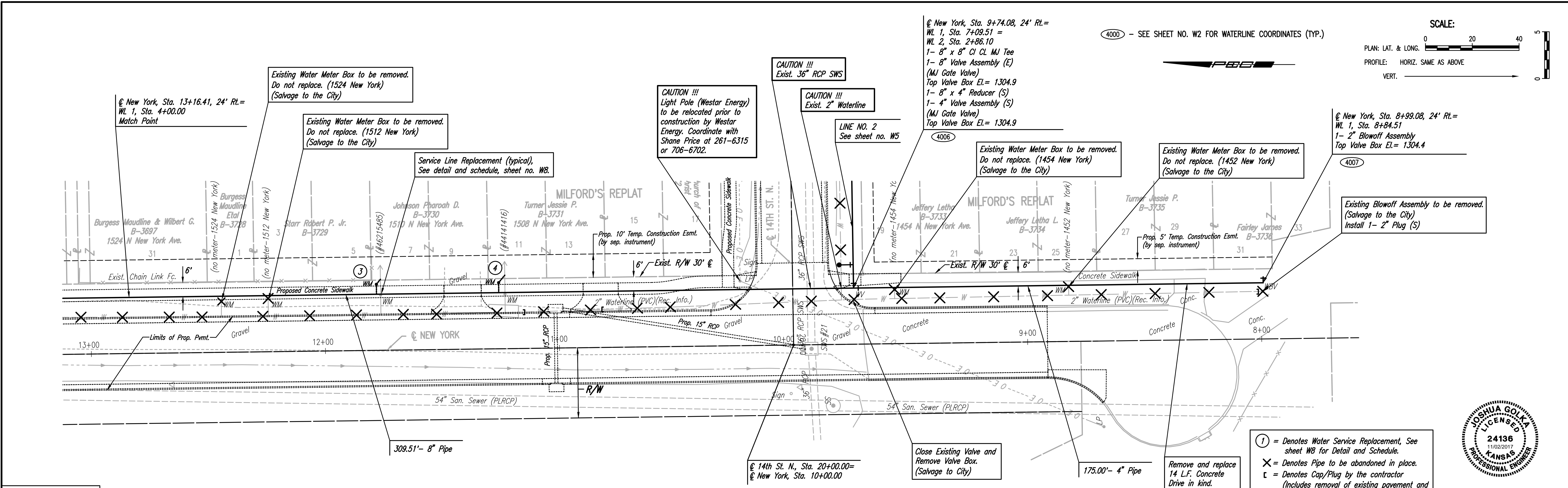


PLAN	CHECKED	DATE
	CHECKED	

PROFILE	CHECKED	DATE
	CHECKED	

Saved: 11-01-2017 10:02:08 AM by CSI
 Plot Scale: 1" = 11'-0" (1:132) 11/1/2017 3:14:08 PM by CSI
 U:\Wichita-Civil\2016\160312\006\Wm\Drawings\160312-006-WD-WATERLINE NO. 1



- ① = Denotes Water Service Replacement, See sheet WB for Detail and Schedule.
- X = Denotes Pipe to be abandoned in place.
- ⌊ = Denotes Cap/Plug by the contractor (Includes removal of existing pavement and replacement with temporary pavement.)

PEC
 PROFESSIONAL ENGINEERING CONSULTANTS P.A.
 303 SOUTH TOPEKA WICHITA, KS 67202
 316-262-2691 www.pec1.com

Job No. 35-160312-006-0042
 Date JULY 2017

Designed By JAC, RFJ
 Drawn By CSI, KTD

WATERLINE REPLACEMENT
 14TH STREET NORTH, 15TH STREET NORTH AND NEW YORK STREET
 WATERLINE NO 1

GARY JANZEN, P.E. - CITY ENGINEER
 CITY OF WICHITA PROJECT NO. 448-90827

Sheet W4 of 8