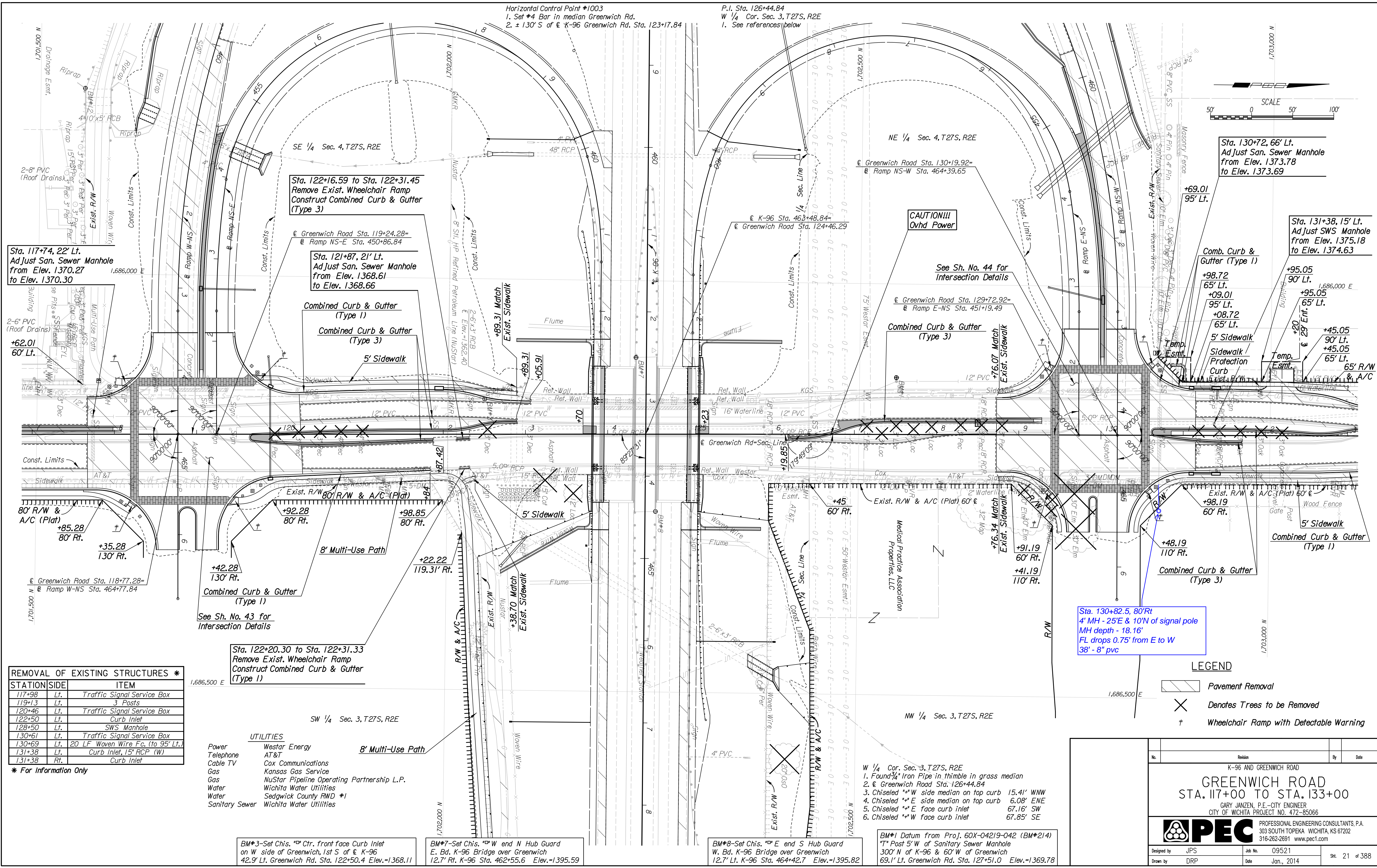


Plot Date: 12/30/2013 11:34:02 AM
 FILE: I:\2009\0952\Plan\0952-pls117.dgn



REMOVAL OF EXISTING STRUCTURES *

STATION	SIDE	ITEM
117+98	Lt.	Traffic Signal Service Box
119+13	Lt.	3 Posts
120+46	Lt.	Traffic Signal Service Box
122+50	Lt.	Curb Inlet
128+50	Lt.	SWS Manhole
130+61	Lt.	Traffic Signal Service Box
130+69	Lt.	20 LF Woven Wire Fc. (to 95' Lt.)
131+38	Lt.	Curb Inlet, 15" RCP (W)
131+38	Rt.	Curb Inlet

* For Information Only

UTILITIES

Power	Westar Energy
Telephone	AT&T
Cable TV	Cox Communications
Gas	Kansas Gas Service
Gas	NuStar Pipeline Operating Partnership L.P.
Water	Wichita Water Utilities
Water	Sedgwick County RWD #1
Sanitary Sewer	Wichita Water Utilities

BM*3-Set Chis. "D" Ctr. front face Curb Inlet on W side of Greenwich, 1st S of K-96 42.9' Lt. Greenwich Rd. Sta. 122+50.4 Elev.=1368.11

BM*7-Set Chis. "D" W end N Hub Guard E. Bd. K-96 Bridge over Greenwich 12.7' Rt. K-96 Sta. 462+55.6 Elev.=1395.59

BM*8-Set Chis. "D" E end S Hub Guard W. Bd. K-96 Bridge over Greenwich 12.7' Lt. K-96 Sta. 464+42.7 Elev.=1395.82

BM*1 Datum from Proj. 60X-04219-042 (BM*214) "T" Post 5' W of Sanitary Sewer Manhole 300' N of K-96 & 60' W of Greenwich 69.1' Lt. Greenwich Rd. Sta. 127+51.0 Elev.=1369.78

- W 1/4 Cor. Sec. 3, T27S, R2E
- Found 3/4" Iron Pipe in thimble in grass median
 - K-96 Greenwich Road Sta. 126+44.84
 - Chiseled "W" side median on top curb 15.41' WNW
 - Chiseled "E" side median on top curb 6.08' ENE
 - Chiseled "E" face curb inlet 67.16' SW
 - Chiseled "W" face curb inlet 67.85' SE

LEGEND

	Pavement Removal
	Denotes Trees to be Removed
	Wheelchair Ramp with Detectable Warning

No.	Revision	By	Date
	K-96 AND GREENWICH ROAD		

GREENWICH ROAD
 STA. 117+00 TO STA. 133+00

GARY JANZEN, P.E.-CITY ENGINEER
 CITY OF WICHITA PROJECT NO. 472-85066

PEC PROFESSIONAL ENGINEERING CONSULTANTS, P.A.
 303 SOUTH TOPEKA WICHITA, KS 67202
 316-262-2691 www.pec1.com

Designed by	JPS	Job No.	09521
Drawn by	DRP	Date	Jan., 2014

Sht. 21 of 388