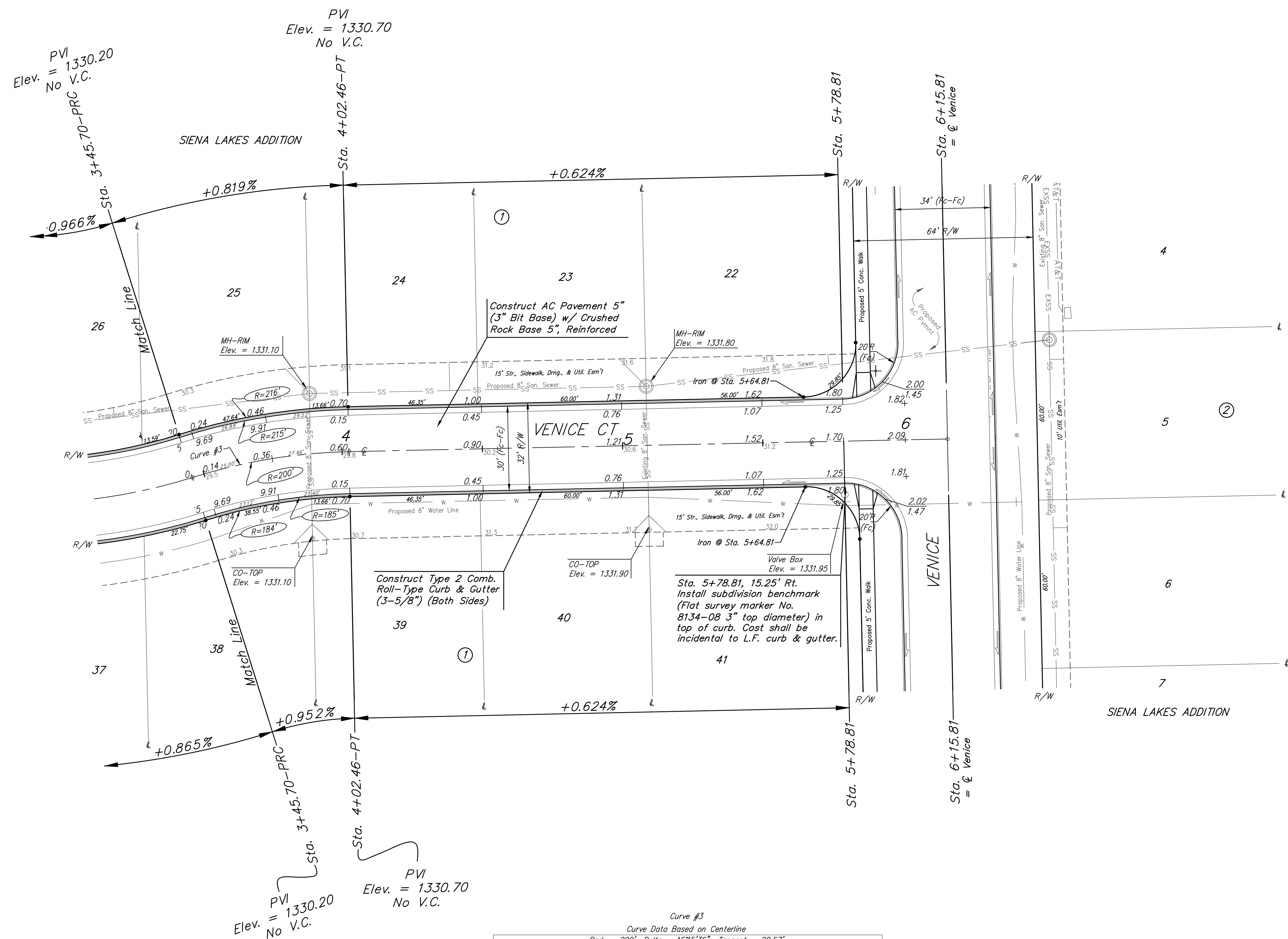
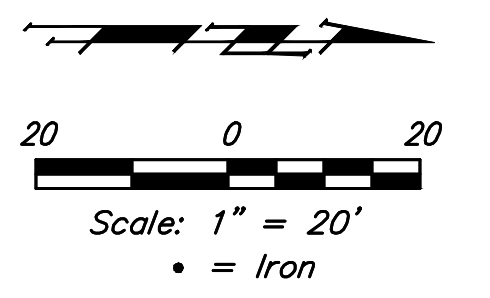


BENCHMARKS:
 Chiseled square at the end of the top of curb at the southeast corner of Ridge Port and 37th ST N.
 Elev. = 1333.05 NAVD88

Chiseled square on the south side of curb inlet on the east side of Lakeway ST
 Elev. = 1329.58 NAVD88



Roll type curb & gutter to be constructed on the pavement on this sheet.
 Top of curb elevation are given for full height curb.

Subdivision Bench Marks		
Street & Station	Location Description	Elevation
Venice Ct 1+97.29, 15.25' Rt.	Adjacent to Fire Hydrant at SW Corner of Lot 36, Block 1	
Venice Ct 5+78.81, 15.25' Rt.	Adjacent to Fire Hydrant at South End of the East Return of Venice & Venice Ct	

Curve #3
 Curve Data Based on Centerline
 Rad. = 200' Delta = 16'15.36" Tangent = 28.57'
 Arc = 56.76' L.C. = 56.57' Def./ft. = 8.59408 Min.

Station	Arc	Face Chord Lengths		Defl.	Total Defl.
		8' Left	8' Right		
3+45.70	-	-	-	0'00'00"	0'00'00"
3+50.00	4.30'	4.79'	3.81'	0'36'57"	0'36'57"
3+75.00	25.00'	27.86'	22.11'	3'34'51"	4'11'48"
4+00.00	25.00'	27.86'	22.11'	3'34'52"	7'46'40"
4+02.46	2.46'	2.74'	2.18'	0'21'08"	8'07'48"

Baughman Siena Lakes Addition - Phase II
VENICE CT
 Sta. 3+45.70 to Sta. 6+15.81

Baughman Company, P.A. 315 Ellis St. Wichita, KS 67211 P 316-262-7271 F 316-262-0149
 ENGINEERING | SURVEYING | PLANNING | LANDSCAPE ARCHITECTURE

PROJECT NUMBER 472-85176	DESIGN AEG	DRAWN JAK
REVISIONS:	APPROVED	DATE 1/05/18
	SCALE Noted	SHEET 10 OF 27

I:\Projects\Siena Lakes\Engineering\Phase II\STR_1748E787\STR PLANS.dwg