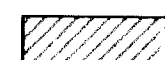
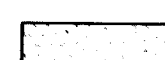
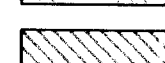


Benchmarks

BM #5 - City of Wichita Brass cap on North turn Island, North - East corner of Central Avenue and Maize Road. Elev. = 44.503

Legend

-  Sidewalk Removal
-  Mill and Overlay
-  Full Depth Removal and Widening

Notes

Storm sewer inlet top elevations shown are at top curb. (Type I curb inlets typical unless noted otherwise.)

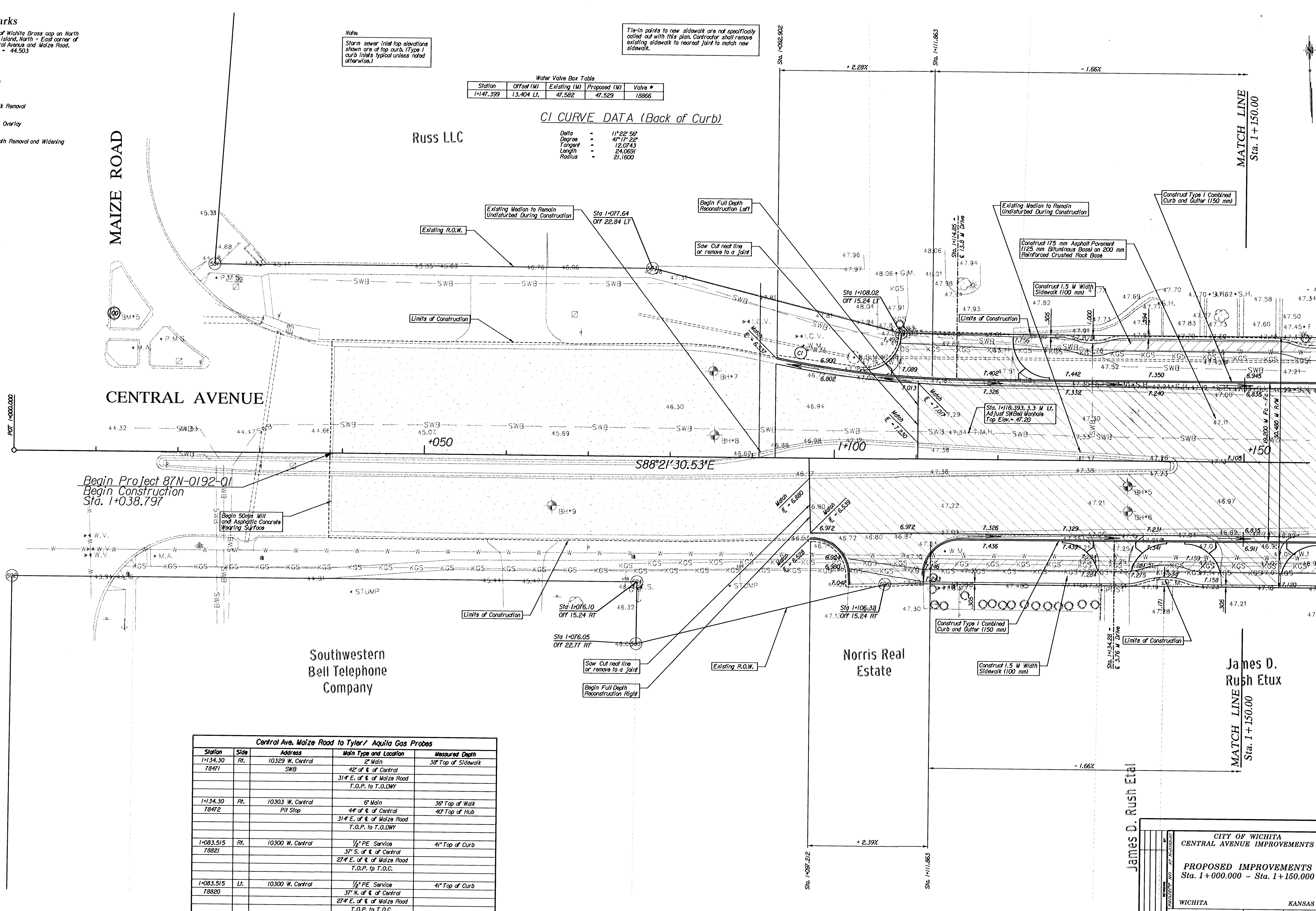
Tie-in points to new sidewalk are not specifically called out with this plan. Contractor shall remove existing sidewalk to nearest joint to match new sidewalk.

Water Valve Box Table

Station	Offset (M)	Existing (M)	Proposed (M)	Valve #
1+147.399	13.404 LT	47.582	47.529	18866

CI CURVE DATA (Back of Curb)

Delta	-	11°22'56"
Degree	-	47°17'22"
Tangent	-	12.0743
Length	-	24.0691
Radius	-	21.1600



Begin Project 87N-0192-01
Begin Construction
Sta. 1+038.797

Begin 50mm Mill
and Asphaltic Concrete
Wearing Surface

Central Ave. Maize Road to Tyler / Aquila Gas Probes

Station	Side	Address	Main Type and Location	Measured Depth
1+134.30	Rt.	10329 W. Central	2" Main	38" Top of Sidewalk
78471		SWB	42" of E. of Central 314' E. of E. of Maize Road T.O.P. to T.O.D.WY	
1+134.30	Rt.	10303 W. Central	6" Main	36" Top of Walk
78472		Pit Stop	44" of E. of Central 314' E. of E. of Maize Road T.O.P. to T.O.D.WY	40" Top of Hub
1+083.515	Rt.	10300 W. Central	1/2" PE Service	41" Top of Curb
78821			37' S. of E. of Central 274' E. of E. of Maize Road T.O.P. to T.O.C.	
1+083.515	Lt.	10300 W. Central	1/2" PE Service	41" Top of Curb
78820			37' N. of E. of Central 274' E. of E. of Maize Road T.O.P. to T.O.C.	

James D. Rush Etal

CITY OF WICHITA
CENTRAL AVENUE IMPROVEMENTS

PROPOSED IMPROVEMENTS
Sta. 1+000.000 - Sta. 1+150.000

WICHITA	KANSAS
DESIGNED BY B.A.L.	DRAWN BY M.P.M.
CHECKED BY J.R.L.	DATE 12/2003
SCALE 1:200	SHEET NO. 6

James D. Rush Etal