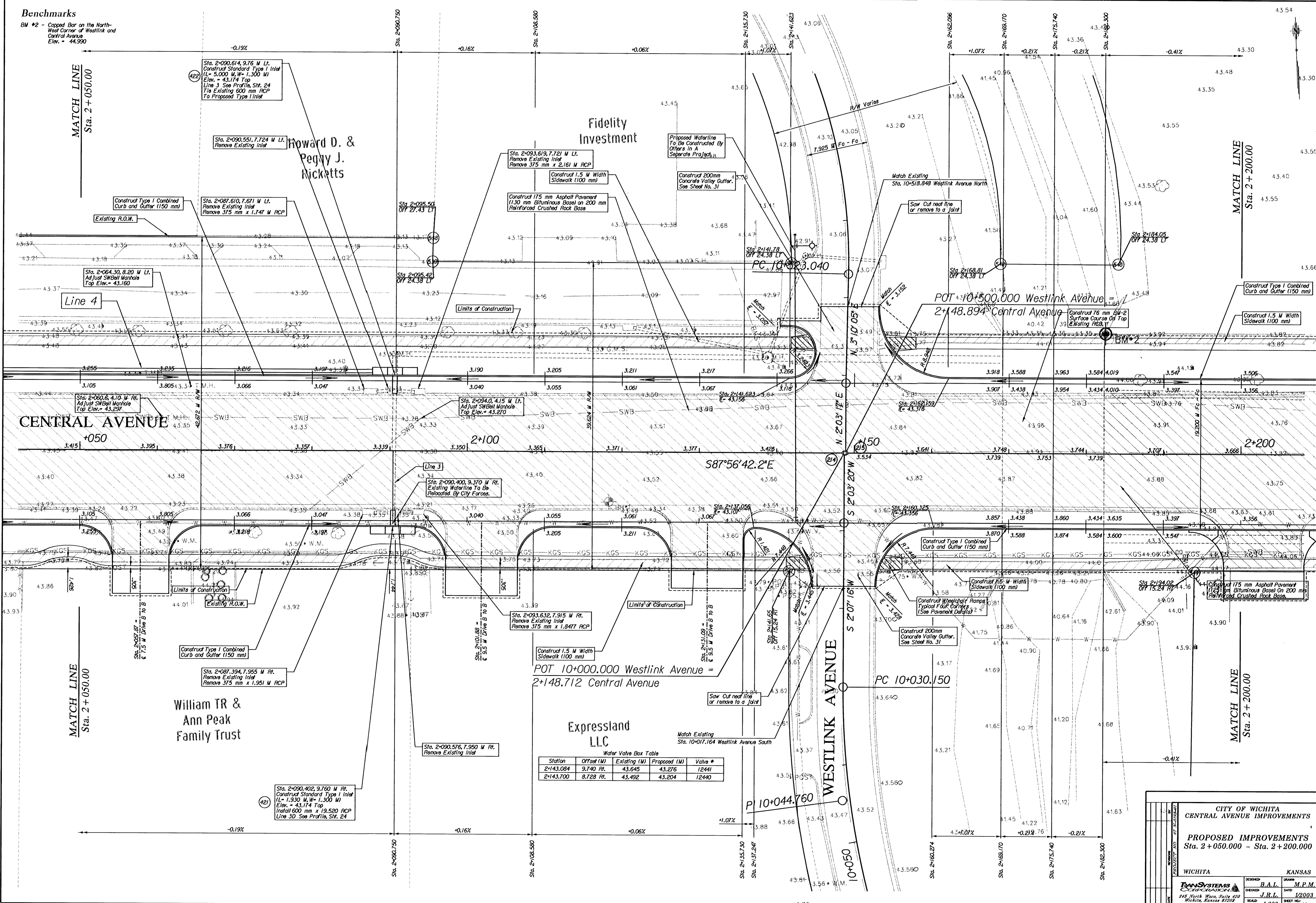


**Benchmarks**

BM #2 - Capped Bar on the North-West Corner of Westlink and Central Avenue  
Elev. = 43.90



**Water Valve Box Table**

Station	Offset (M)	Existing (M)	Proposed (M)	Valve #
2+143.084	9.740 Rt.	43.645	43.276	12441
2+143.700	8.728 Rt.	43.492	43.204	12440

**CITY OF WICHITA**  
CENTRAL AVENUE IMPROVEMENTS

**PROPOSED IMPROVEMENTS**  
Sta. 2+050.000 - Sta. 2+200.000

WICHITA	KANSAS
DESIGNED: B.A.L.	DRAWN: M.P.M.
CHECKED: J.R.L.	DATE: 1/2003
SCALE: 1:200	SHEET NO: 13

**TRANSYSTEMS**  
245 North Wood, Suite 400  
Wichita, Kansas 67209