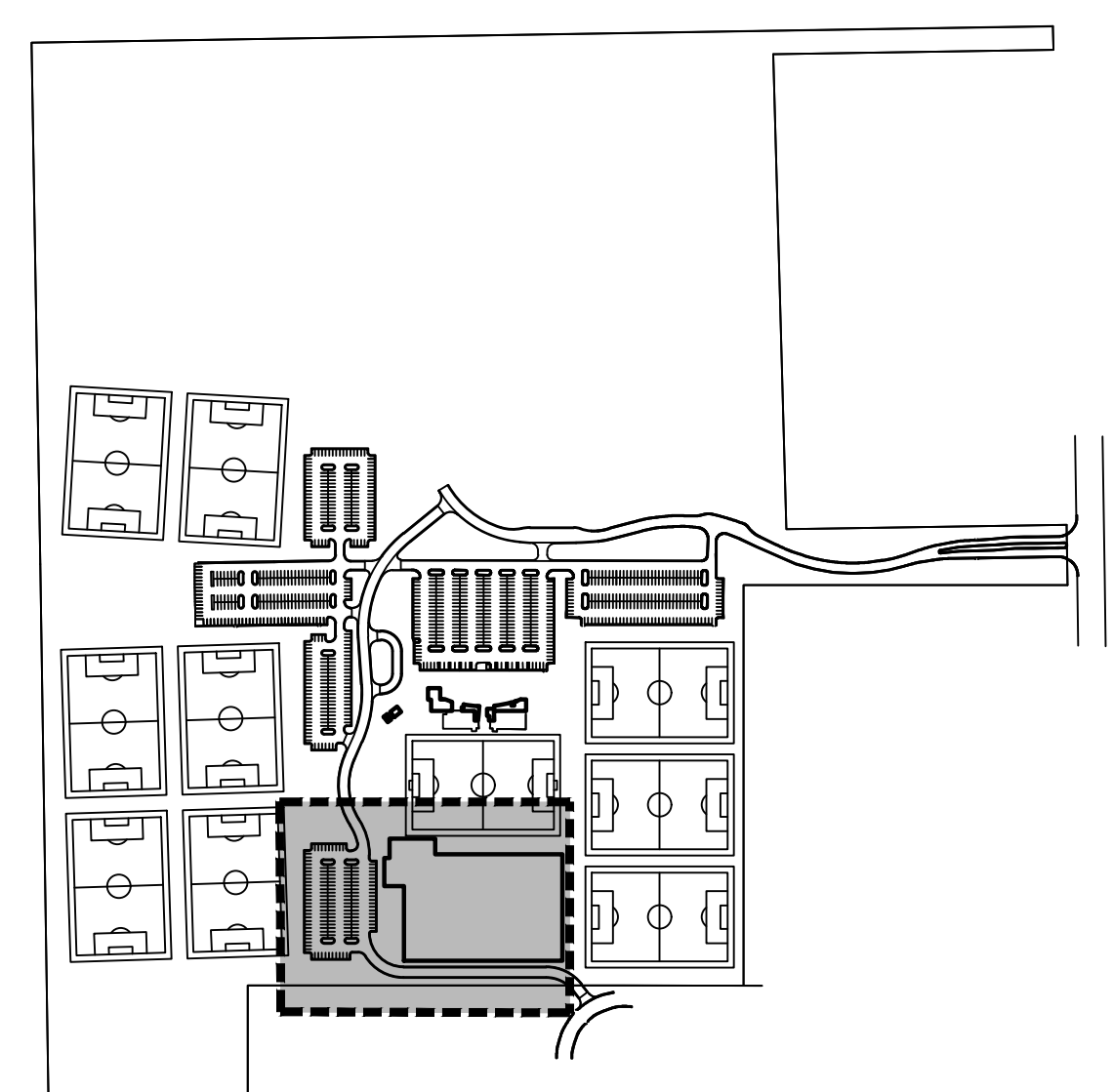
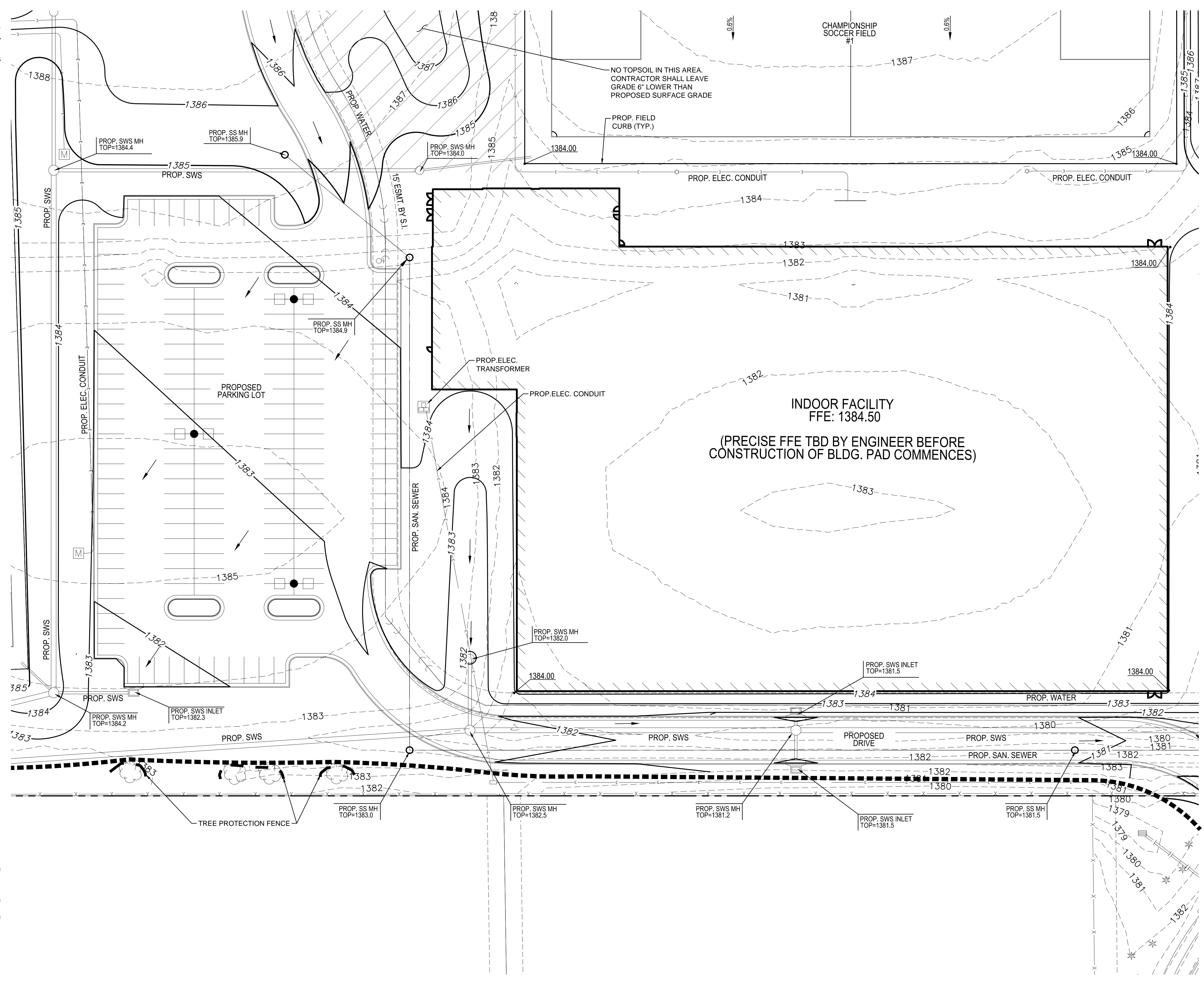


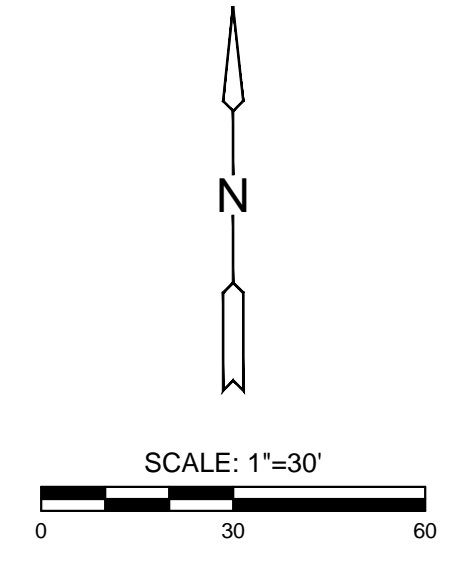
J:\PROJECTS\2017\1701010567\_COW\_STRYKER\_170567\_CAD\SHS\505\_DWG\GRD\170567-05-1201.DWG  
 PLOTTED: Wednesday, January 10, 2018 @ 08:43AM



LOCATION MAP

**LEGEND**

- EXISTING SANITARY SEWER
- G- EXISTING GAS LINE
- W- EXISTING WATER LINE
- EXISTING STORM SEWER
- PROPOSED STORM SEWER
- E-E- PROPOSED ELEC. CONDUIT
- XXXX- PROPOSED GRADES
- XXXX- EXISTING GRADES
- GRADING LIMITS
- 0.8% SLOPE ARROW
- 29.50 SPOT ELEVATION
- - - - TREE PROTECTION FENCE (110 LF)



NOTE:  
 PROPOSED CONTOURS AND SPOT ELEVATIONS SHOWN ON THESE PLANS ARE FINAL SURFACE ELEVATIONS. CONTRACTOR SHALL BE RESPONSIBLE FOR MAKING ADJUSTMENTS FOR PAVEMENT THICKNESS, SUBGRADE THICKNESS, ARTIFICIAL TURF THICKNESS, MISC. REMOVALS, ETC.

\* PAVEMENT SECTION (PARKING AND STREET PAVEMENT SECTION)  
 10" PAVEMENT SECTION (5" ASPHALT ON 5" ROCK BASE)

\* TURF SECTION  
 6" TURF SECTION (6" AGGREGATE BASE BENEATH TURF FIELDS)



GRADING & UTILITY PLANS FOR  
**STRYKER SPORTS**  
 WICHITA, KANSAS



©2018 MKEC Engineering  
 All Rights Reserved  
 www.mkec.com  
 These drawings and their contents, including, but not limited to, all concepts, designs, & ideas are the exclusive property of MKEC Engineering (MKEC), and may not be used or reproduced in any way without the express consent of MKEC.

**GRADING PLAN**  
7

PROJECT NO.	170567
DATE	01-10-18
SCALE	1" = 30'
DESIGNED	DMM
DRAWN	MAB
CHECKED	JAG

ISSUED FOR CONST.	01-10-18
NO.	REVISION
DATE	