

J:\PROJECTS\2017\1701010567\_COW\_STRYKER\_170567\_CAD\SH1505\_OVAL\WTR\170567\_05-202.DWG  
 PLOTTED: Wednesday, January 10, 2018 @ 08:55AM

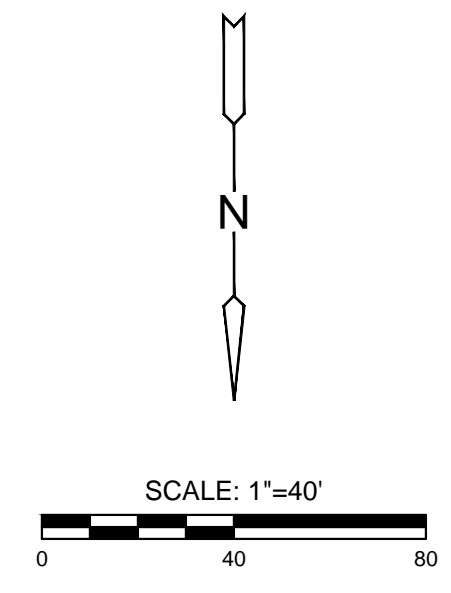
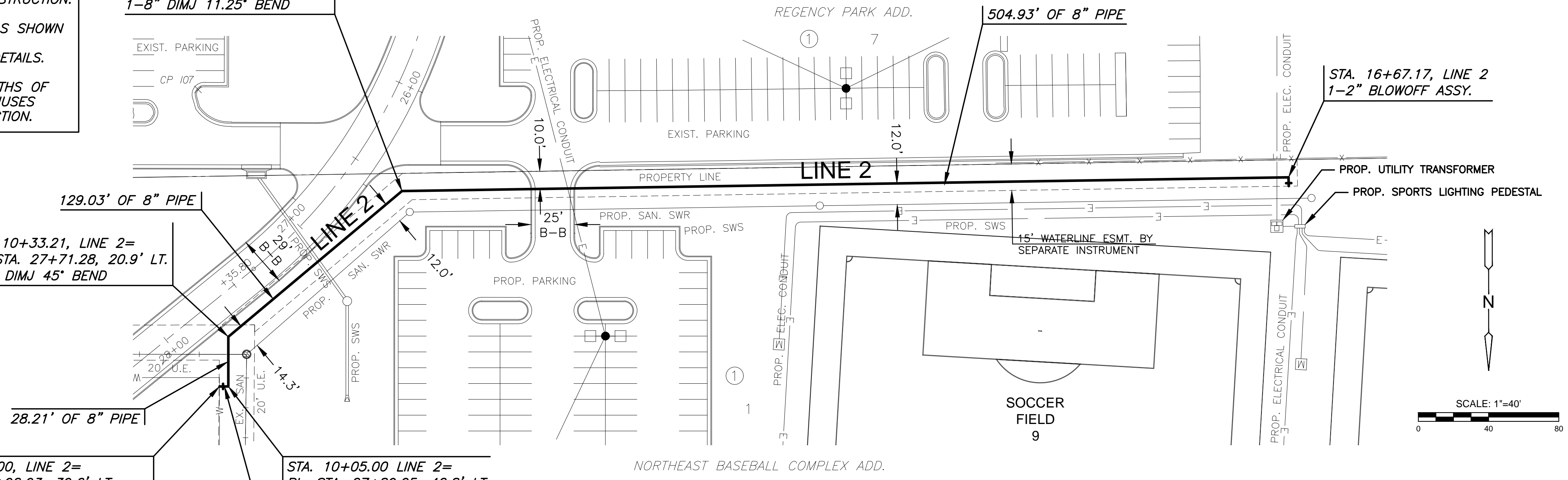
**NOTES:**  
 CONTRACTOR TO VERIFY LOCATION AND ELEVATION OF EXISTING WATER LINE PRIOR TO CONSTRUCTION.  
 PROPOSED ELECTRICAL CONDUIT RUNS AS SHOWN ARE SCHEMATIC IN NATURE. REFERENCE ELECTRICAL SHEETS FOR INSTALLATION DETAILS.  
 CONTRACTOR SHALL USE SHORTER LENGTHS OF PIPE WHEN INSTALLING HORIZONTAL RADIUSES THAT EXCEED MAXIMUM ALLOWED DEFLECTION.

STA. 11+62.24, LINE 2=  
 BL. STA. 26+50.18, 32.3' LT.  
 1-8" DIMJ 22.5° BEND  
 1-8" DIMJ 11.25° BEND

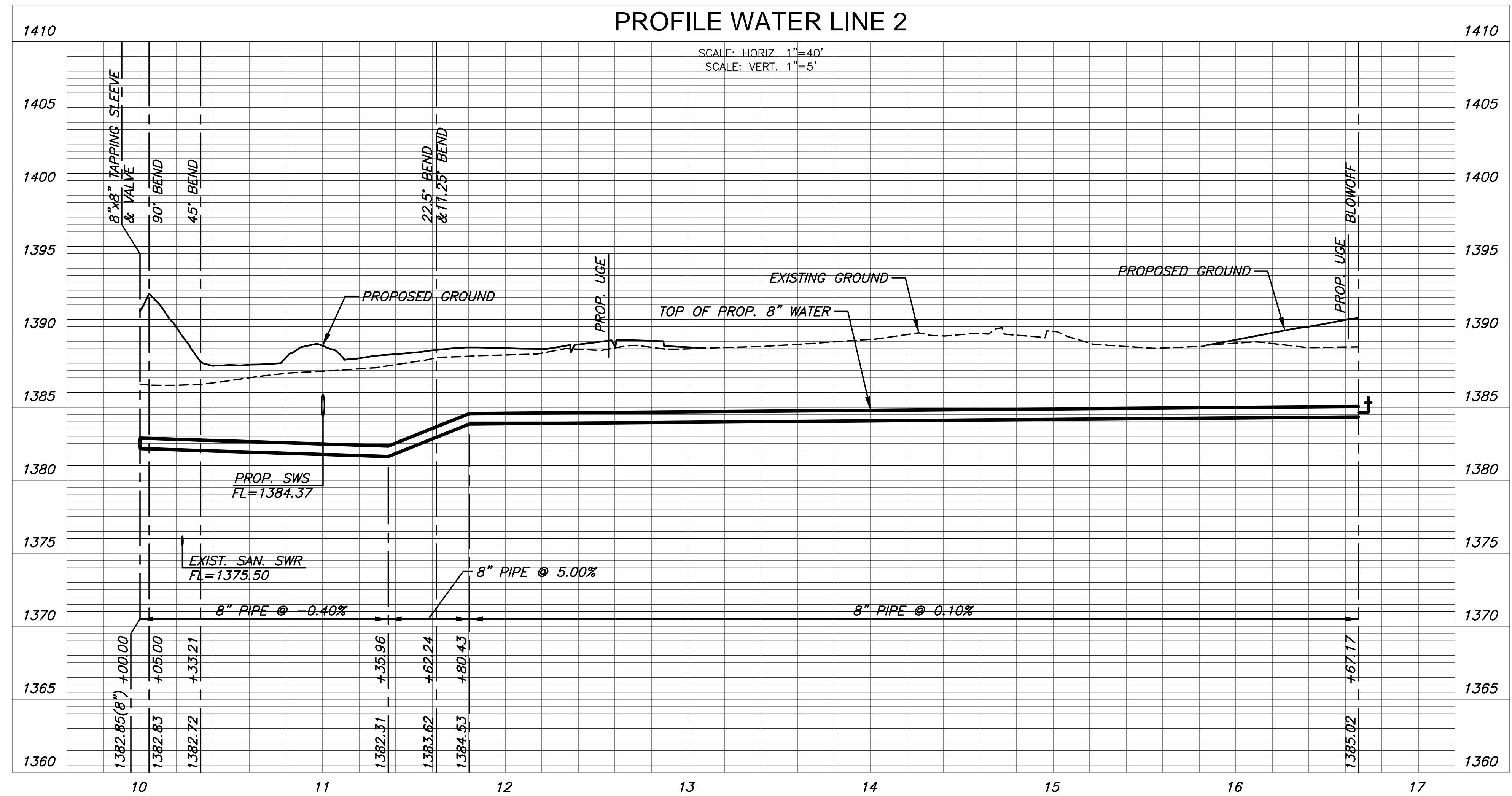
STA. 10+33.21, LINE 2=  
 BL. STA. 27+71.28, 20.9' LT.  
 1-8" DIMJ 45° BEND

STA. 10+00.00, LINE 2=  
 BL. STA. 27+92.93, 39.6' LT.  
 1-8"x8" TAPPING SLEEVE & VALVE TO BE FURNISHED & INSTALLED BY C.O.W. WATER DEPARTMENT VALVE BOX EL.=1392.1

STA. 10+05.00 LINE 2=  
 BL. STA. 27+89.05, 42.8' LT.  
 1-8" DIMJ 90° BEND



**PLAN WATER LINE 2**  
**PROFILE WATER LINE 2**



GRADING AND UTILITY PLANS FOR  
**STRYKER SPORTS**  
 WICHITA, KANSAS



©2018 MKEC Engineering All Rights Reserved  
 These drawings and their contents, including, but not limited to, all concepts, designs, & ideas are the exclusive property of MKEC Engineering (MKEC), and may not be used or reproduced in any way without the express consent of MKEC.

**WATER LINE 2**

PROJECT NO.	170567
DATE	01-10-18
SCALE	1" = 40'
DESIGNED	MAB
DRAWN	JWC
CHECKED	MAB
ISSUED FOR CONST. NO.	01-10-18
REVISION	DATE