



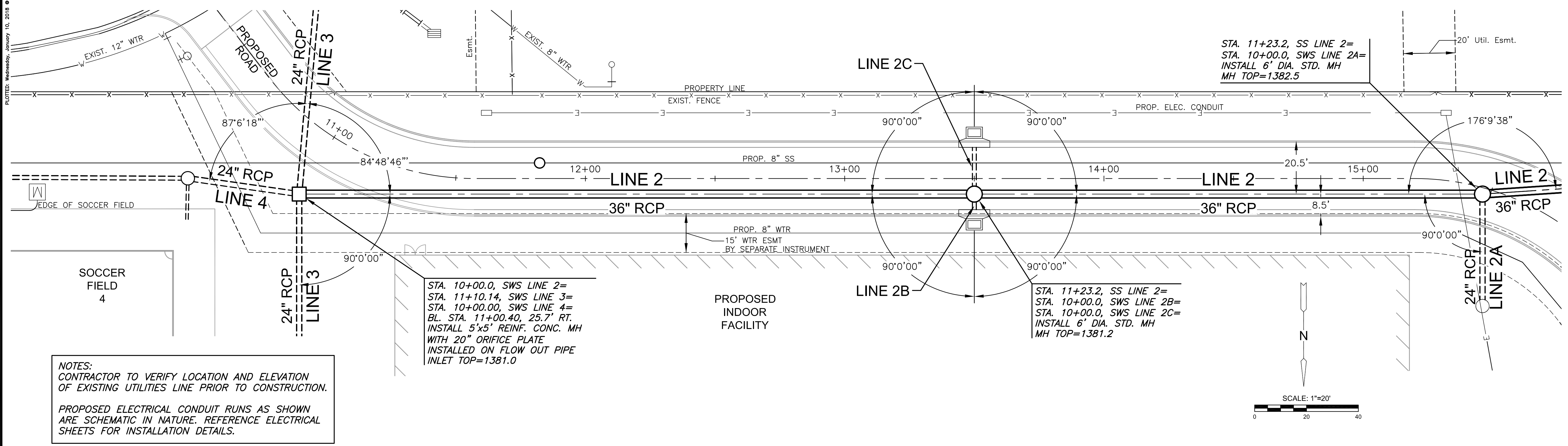
©2018 MKEC Engineering  
All Rights Reserved  
www.mkec.com  
These drawings and their contents, including, but not limited to, all concepts, designs, & ideas are the exclusive property of MKEC Engineering (MKEC), and may not be used or reproduced in any way without the express consent of MKEC.

**SWS LINE 2**

PROJECT NO.	170567
DATE	01-10-18
SCALE	1"=20'
DESIGNED	MAB
DRAWN	CRM
CHECKED	MAB

ISSUED FOR CONST.	1-10-18
NO.	REVISION
	DATE

J:\PROJECTS\2017\1701010567\_COW\_STRYKER\_170567\_CAD\SHITS\05\_CIVIL\SWS\170567-05-206.DWG  
 PLOTTED: Wednesday, January 10, 2018 @ 09:07AM



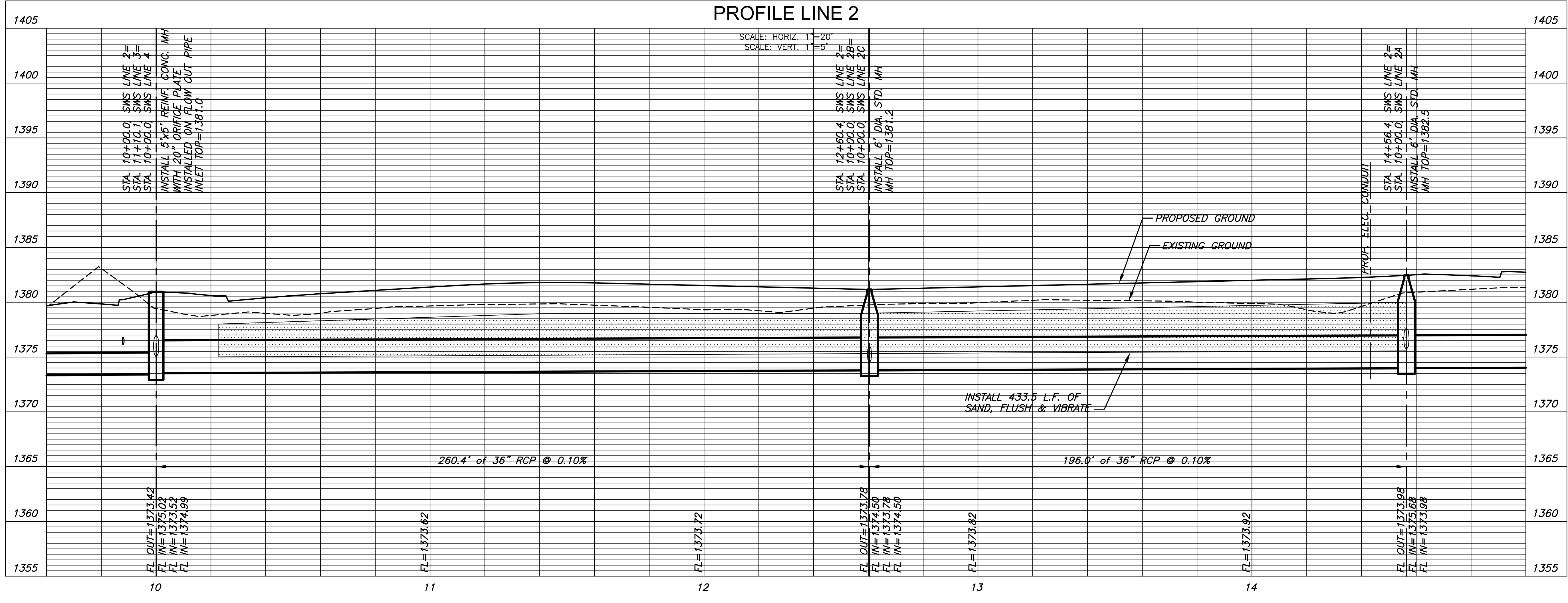
**NOTES:**  
CONTRACTOR TO VERIFY LOCATION AND ELEVATION OF EXISTING UTILITIES LINE PRIOR TO CONSTRUCTION.  
PROPOSED ELECTRICAL CONDUIT RUNS AS SHOWN ARE SCHEMATIC IN NATURE. REFERENCE ELECTRICAL SHEETS FOR INSTALLATION DETAILS.

STA. 10+00.0, SWS LINE 2=  
STA. 11+10.14, SWS LINE 3=  
STA. 10+00.00, SWS LINE 4=  
BL. STA. 11+00.40, 25.7' RT.  
INSTALL 5'x5' REINF. CONC. MH  
WITH 20" ORIFICE PLATE  
INSTALLED ON FLOW OUT PIPE  
INLET TOP=1381.0

STA. 11+23.2, SS LINE 2=  
STA. 10+00.0, SWS LINE 2B=  
STA. 10+00.0, SWS LINE 2C=  
INSTALL 6' DIA. STD. MH  
MH TOP=1381.2

STA. 11+23.2, SS LINE 2=  
STA. 10+00.0, SWS LINE 2A=  
INSTALL 6' DIA. STD. MH  
MH TOP=1382.5

**PLAN LINE 2  
PROFILE LINE 2**



FL OUT=1373.42  
FL IN=1375.02  
FL IN=1373.52  
FL IN=1374.99

FL=1373.62

FL=1373.72

FL OUT=1373.78  
FL IN=1374.50  
FL IN=1373.78  
FL IN=1374.50

FL=1373.82

FL=1373.92

FL OUT=1373.98  
FL IN=1375.68  
FL IN=1373.98

260.4' of 36" RCP @ 0.10%

196.0' of 36" RCP @ 0.10%

INSTALL 433.5 L.F. OF SAND, FLUSH & VIBRATE