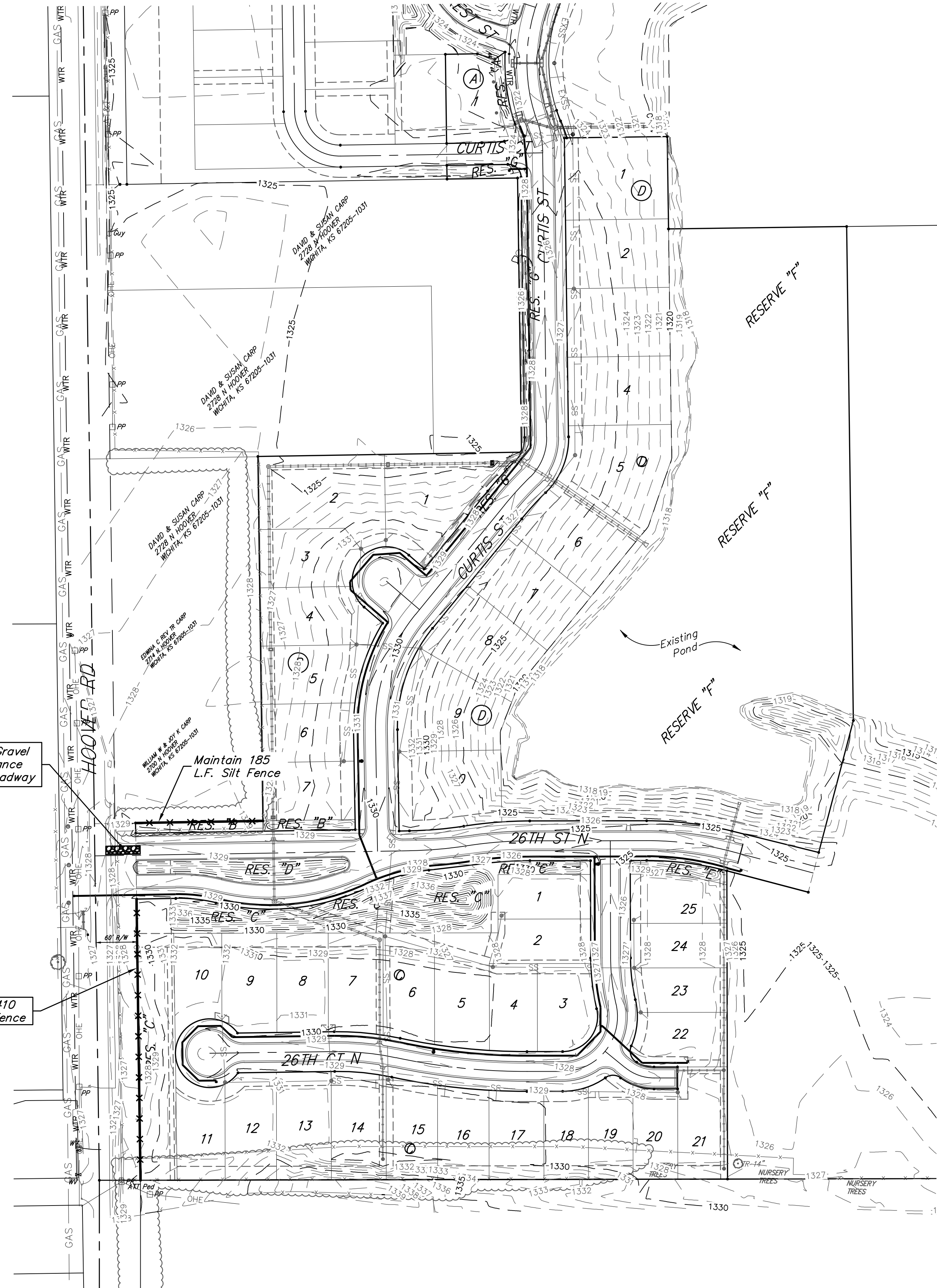


**BENCHMARKS:**  
 City of Wichita Benchmark Disk  
 34.9' S. & 31.2' W. of the SW Cor.,  
 NW1/4, Sec. 2, Twp. 27-S, R-1-W.  
 Elev. = 1327.57 NAVD88

"□" cut in top of curb 1.5'  
 north of the northeast corner of  
 Lot 20, Block B, Sandcrest Addn.  
 Elev. = 1327.21 NAVD88

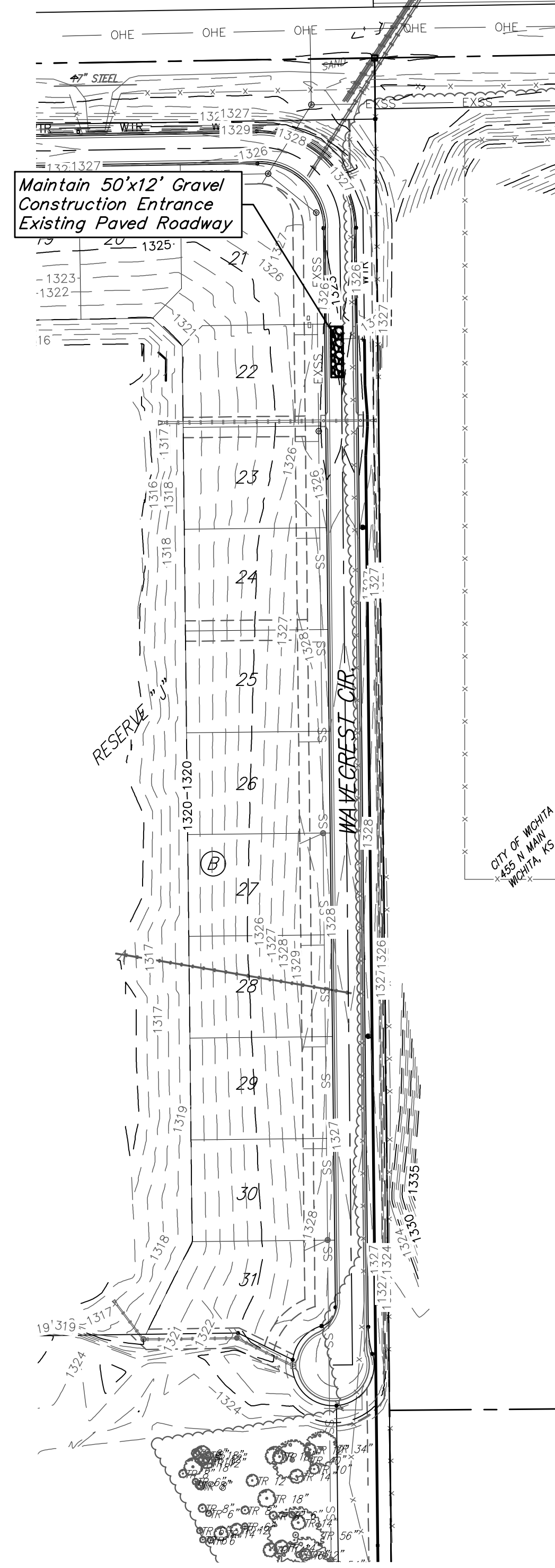
"□" cut in top of east curb  
 inlet at the southeast corner of  
 the southern intersection of Curtis  
 & Sandcrest.  
 Elev. = 1322.05 NAVD88



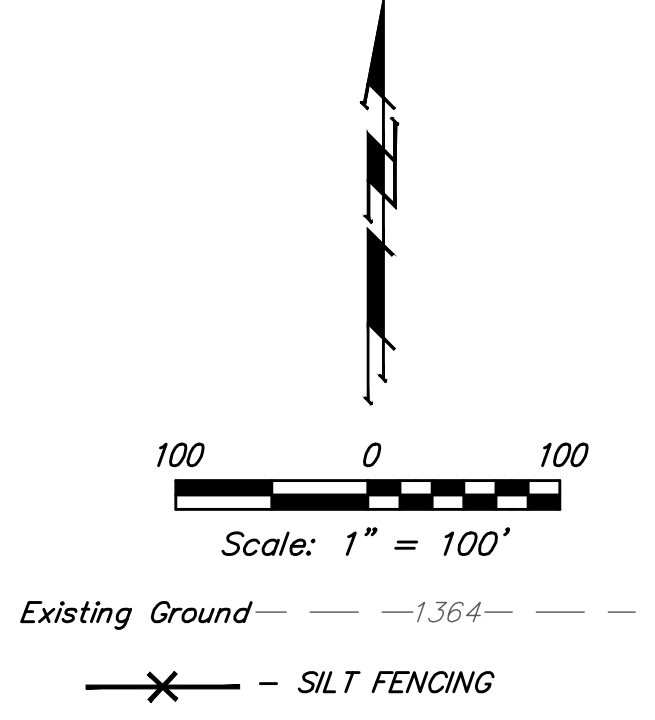
Maintain 50'x12' Gravel  
 Construction Entrance  
 Existing Paved Roadway

Maintain 185  
 L.F. Silt Fence

Maintain 410  
 L.F. Silt Fence



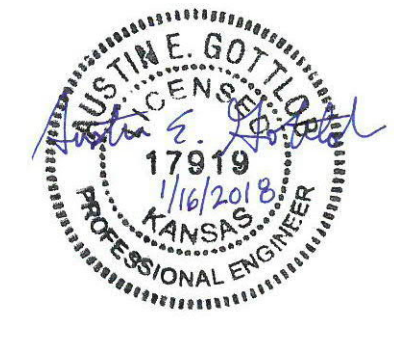
Maintain 50'x12' Gravel  
 Construction Entrance  
 Existing Paved Roadway



**NOTE:**  
 Contractor shall make sure all erosion control is in  
 place before project is accepted. This plan  
 represents the minimum standard. Any additional  
 erosion control measures shall be installed by the  
 Contractor as needed.

EROSION CONTROL MEASURE	INSTALL	MAINTAIN
CONSTRUCTION ENTRANCE (EA)	0	2
SILT FENCE (LF)	0	595
MAINTAIN EROSION CONTROL BMP's (LS)	0	1

\* ALL EXISTING BMP's INCLUDING CONSTRUCTION ENTRANCE, SEDIMENT BARRIERS, SILT FENCE, CUT-OFF TRENCH, AND EROSION CONTROL MAT SHALL BE MAINTAINED AND REPAIRED IF NECESSARY.



**Baughman** Sandcrest 3rd Addition  
**EROSION CONTROL**  
 Water Distribution System

Baughman Company, P.A. 315 Ellis St. Wichita, KS 67211 P 316-262-7271 F 316-262-0149  
 ENGINEERING | SURVEYING | PLANNING | LANDSCAPE ARCHITECTURE

PROJECT NUMBER 448-90860	DESIGN AEG	DRAWN JAK
REVISIONS:	APPROVED	DATE 1/15/18
	SCALE Noted	
	SHEET	<b>11 OF 18</b>

I:\Projects\Sandcrest 3rd Addition\_1706P290\Engineering\Phase 1\Wtr\_1611-E582\WTR PLANS.dwg