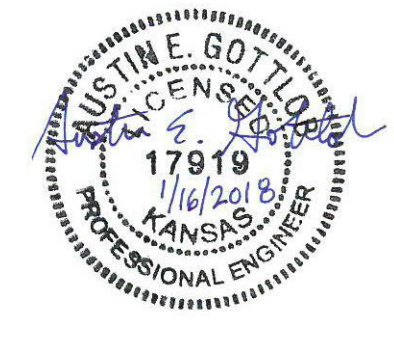
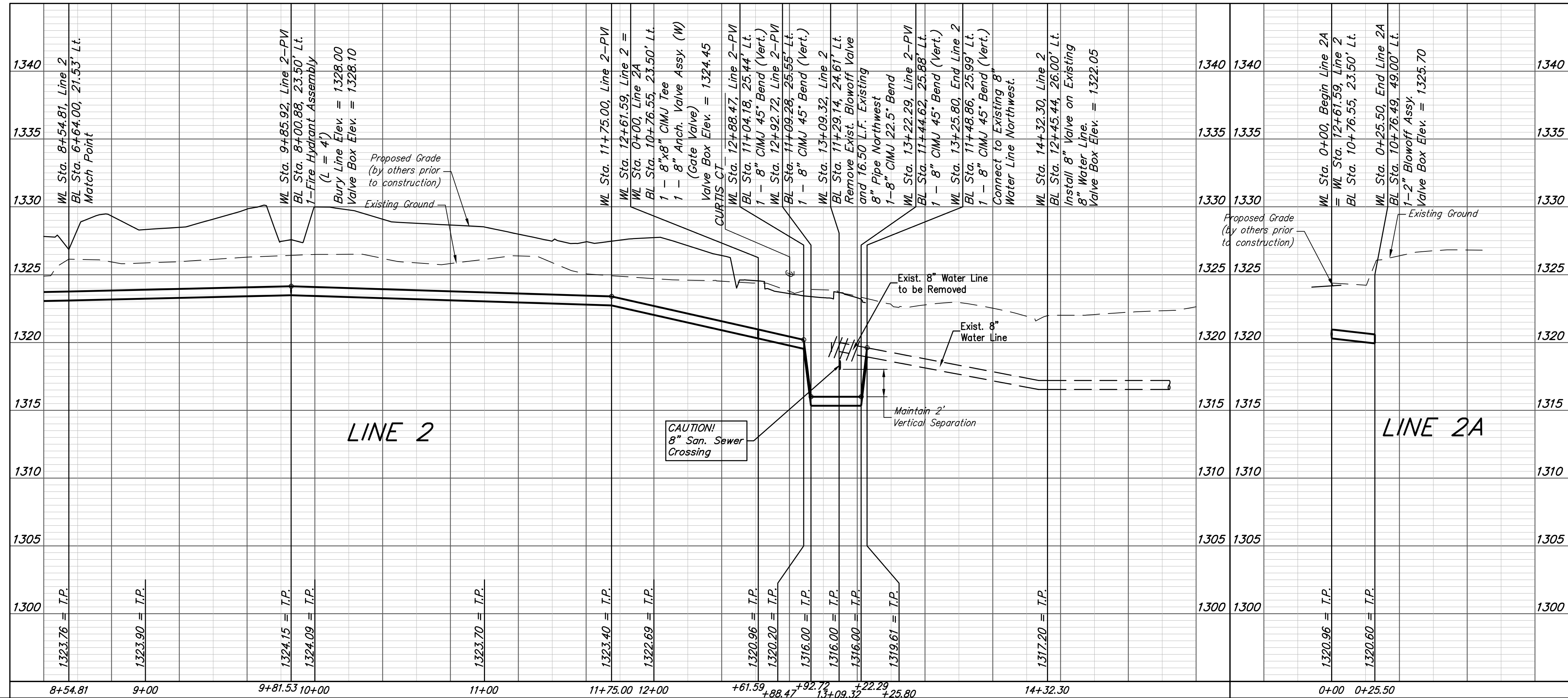
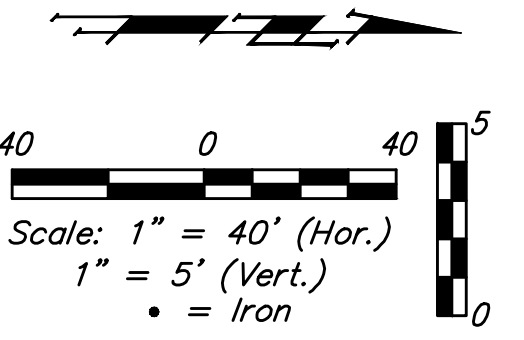
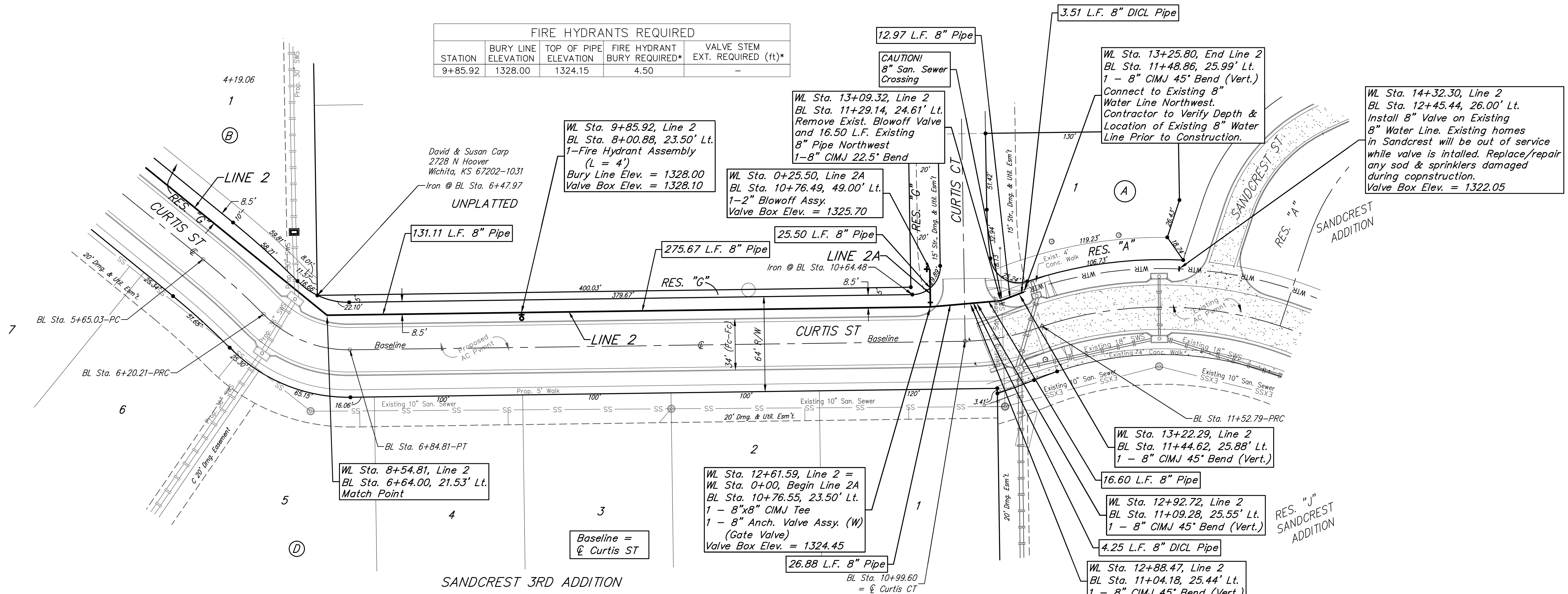


BENCHMARKS:
 City of Wichita Benchmark Disk
 34.9' S. & 31.2' W. of the SW Cor.,
 NW1/4, Sec. 2, Twp. 27-S, R-1-W.
 Elev. = 1327.57 NAVD88

"□" cut in top of curb 1.5'
 north of the northeast corner of
 Lot 20, Block B, Sandcrest Addn.
 Elev. = 1327.21 NAVD88

"□" cut in top of east curb
 inlet at the southeast corner of
 the southern intersection of Curtis
 & Sandcrest.
 Elev. = 1322.05 NAVD88



Baughman Sandcrest 3rd Addition
LINE 2 & LINE 2A
 Water Distribution System

Baughman Company, P.A. 315 Ellis St. Wichita, KS 67211 P 316-262-7271 F 316-262-0149
 ENGINEERING | SURVEYING | PLANNING | LANDSCAPE ARCHITECTURE

PROJECT NUMBER 448-90860	DESIGN AEG	DRAWN JAK
REVISIONS:	APPROVED	DATE 1/15/18
	SCALE Noted	SHEET 6 OF 18

1:\Projects\Sandcrest 3rd Addition_1706\F290\Engineering\Phase 1\Wtr_1611-E382\WTR PLANS.dwg