

GENERAL NOTES:

1. Contractor will be required to provide notice to utility companies a minimum of forty-eight (48) hours prior to any excavation, as follows:

- Kansas One-Call 687-2470
- The Contractor must notify the following in case of an emergency:
- Cox Communications 262-4270
 - Kansas Gas Service 1-888-482-4950
 - Westar Energy 383-8650
 - Aquila Energy 1-800-303-0357
 - AT&T 268-2245
 - City of Wichita Water Dept. 268-4563
 - City of Wichita Sewer Maint. 268-4024
 - City of Wichita Storm Sewer Maint. 268-4090
 - City of Wichita Traffic Maint. 268-4034
 - Conoco Phillips Pipeline Co. 1-877-267-2290
 - Southern Star Pipeline Co. 529-6600
 - Kinder-Morgan Pipeline Co. 1-888-844-5658

2. Utility service lines, poles, valve boxes, meters, and etcetera are to be adjusted as necessary by others prior to construction unless the plans specifically call for their adjustment by the Contractor or unless the plans specifically identify a utility to be adjusted by its owner during construction. Existing utilities and their location, as shown on the plans, represent the best information obtainable for design. The Contractor will be required to work around existing utilities within the right-of-way which do not conflict with proposed construction.

3. Rubble from the removal of miscellaneous structures and excess excavation which is to be wasted shall be disposed of on sites to be provided by the Contractor. These sites shall be approved by the Engineer as to suitability, appearance and site location. Locations, in the opinion of the Engineer, that will leave an unsightly appearance will not be approved. All disposal sites must be approved by the Kansas Department of Health and Environment. Material either stockpiled or disposed of in a flood plain would require a Kansas State Board of Agriculture permit. Any material dumped in waters of the United States or wetlands is subject to U.S. Corps. of Engineers permitting regulations. Any material buried or stockpiled beyond approved construction limits would require additional archaeological investigations unless buried in a previously approved borrow location.

4. Trees and shrubs in public right-of-way which are in direct conflict with proposed new construction shall be removed by the Contractor with the Engineer's approval. Trees and shrubs which are not in direct conflict with proposed new construction shall be saved and protected from damage.

5. The Contractor shall give all property owners and/or tenants of developed property abutting the construction of this project a minimum of ten (10) days notice prior to start of construction.

6. The Contractor shall be responsible for preserving property irons. The Contractor will be required to re-establish any property irons which are damaged or destroyed by his construction operations. Such irons shall be re-established by a licensed land surveyor in accordance with state laws.

7. All existing and proposed erosion control measures including silt fencing, erosion control mat, straw bales, inlet barriers, and const. entrance shall be maintained throughout construction by the contractor and until project is accepted by the City of Wichita. The on-site engineer shall complete weekly reports on the status of erosion control measures. The contractor shall be required to comply with maintenance and/or replacement of erosion control measures as determined by the on-site engineer until project is accepted by City of Wichita. Maintenance and/or replacement of erosion control measures to be paid by L.S. bid item "Maintain Existing BMP's."

8. All excess excavation shall remain on-site and shall be stockpiled or spread at a location determined by the engineer.

9. All of Hoover Rd. R/W and Res. "J" above the water surface disturbed by construction shall be seeded and mulched as follows:
(Permanent Seeding)
SEED -- Kansas Premium Fescue Blend; 8#/1000 Sq. Ft.
Rye grass (PLS); 3#/1000 Sq. Ft. and
FERTILIZER -- 12-24-12 Ratio at 350 Lbs./Ac.
MULCH -- 2 Tons Prairie Hay / Acre

All other disturbed areas not in street R/W are to be seeded as follows: (Temporary Seeding)
SEED -- Rye grass (PLS)--5#/1000 Sq. Ft.

All costs associated with seeding including perpetration of ground, seeding, fertilizing, mulching, shall be including in the L.S. bid item "Seeding"

10. The Developer for this project is Jay Russell
P.O. Box 75337
Wichita, KS 67272
(316) 722-2417
jwrussell1105@cloud.com

Storm Water Certification:

These construction plans were prepared in accordance with the current Storm Water Management Regulations as set forth in the City of Wichita's Storm Water Management Ordinance 16.32 and the policies/guidelines presented in the Wichita/Sedgwick County Storm Water Manual.

Disturbed Area = 20.5 ac. Sandcrest 3rd Addition
6.2 ac. Sandcrest Addition

Water Quality Treatment: Provided by snouts and sump inlets.
Downstream Channel Protection: Provided for by the existing non-discharging sand pit

SHEET INDEX

Title Sheet	1
Mass Grading Plan	2-4
Erosion Control BMP Details	5-9
Mass Grading Typical Section	10
Coordinate Sheet	11
Copy of Plat	12

BENEFIT DISTRICT

EARTH WORK TOTALS (Unadjusted)

Project Totals	C.Y. EXCAVATION	C.Y. FILL
	60,460	47,638

Earthwork Quantities reflect the best available topography. The Contractor shall satisfy himself with the earthwork quantities as bid for L.S. bid item "Grading, Mass" prior to bidding. No additional payments or change orders for earthwork will be accepted.

STORMWATER DRAIN #432

to serve

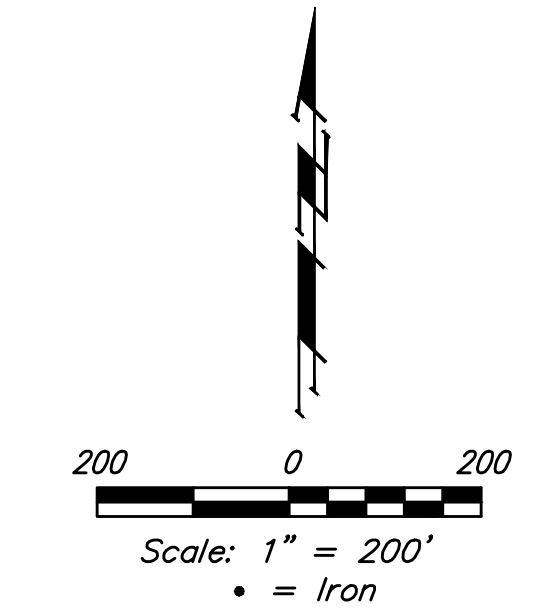
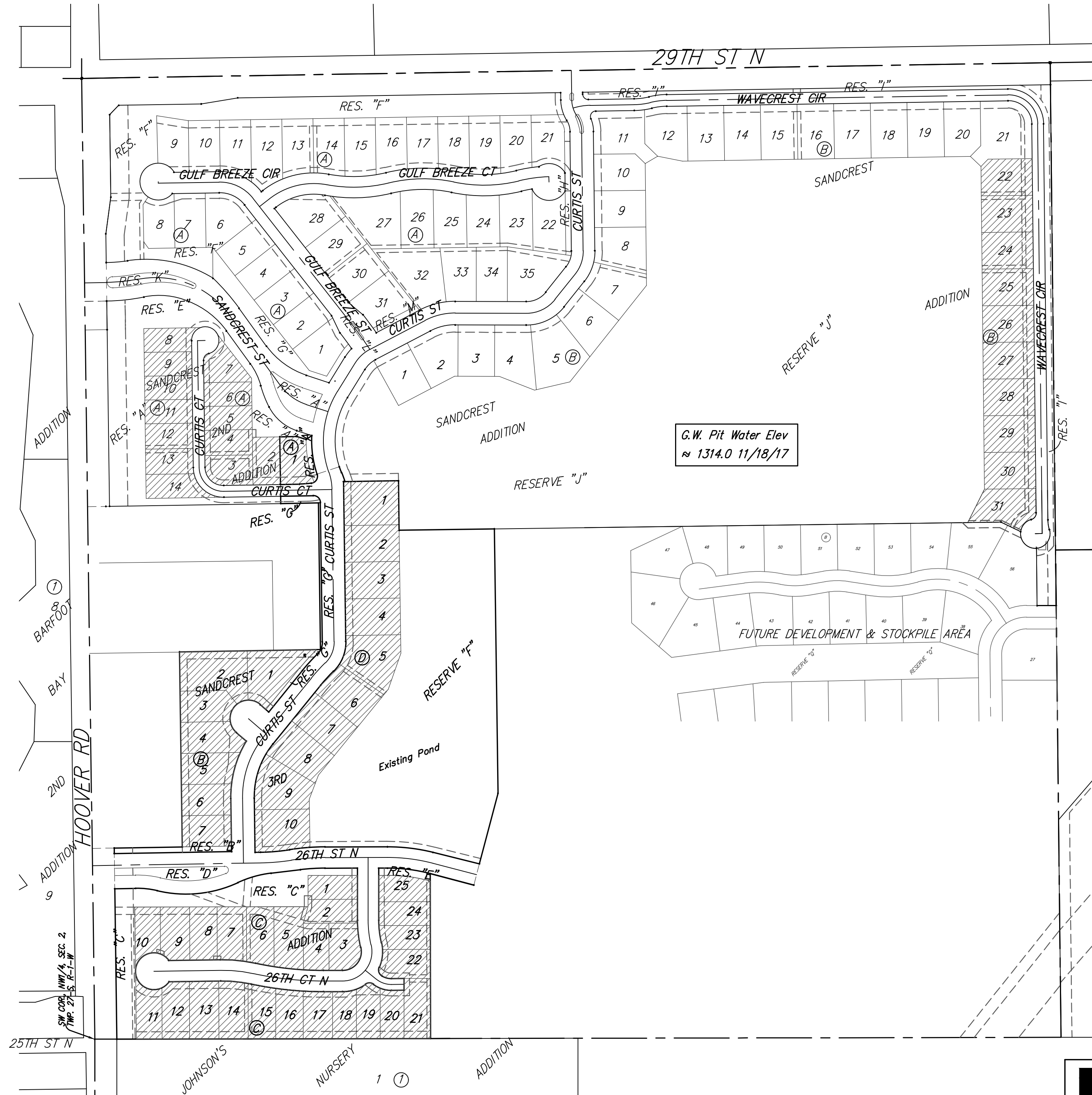
SANDCREST, SANDCREST 2ND, & SANDCREST 3RD ADDITION - PHASE II

CITY OF WICHITA, KANSAS

Gary Janzen, P.E. City Engineer

Project Number: 468 - 85272

OCA Number: 751573

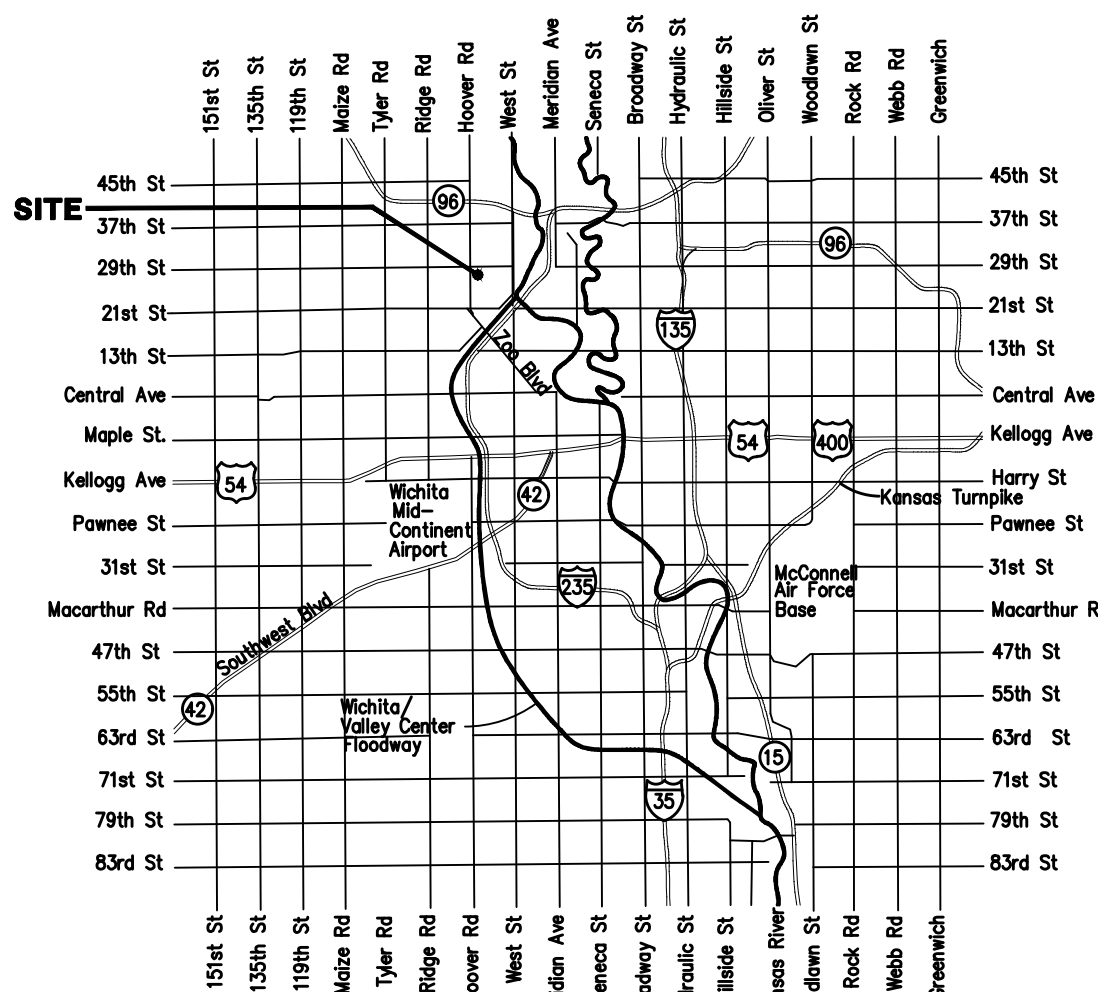


BENCHMARKS

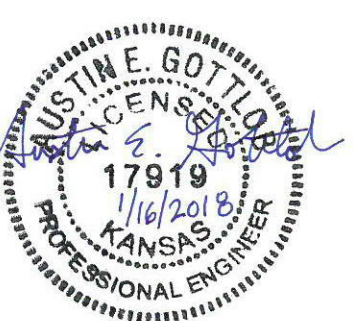
City of Wichita Benchmark Disk
34.9' S. & 31.2' W. of the SW Cor.
NW1/4, Sec. 2, Twp. 27-S, R-1-W.
Elev. = 1327.57 NAVD88

"□" cut in top of curb 1.5'
north of the northeast corner of
Lot 20, Block B, Sandcrest Addn.
Elev. = 1327.21 NAVD88

"□" cut in top of east curb
inlet at the southeast corner of
the southern intersection of Curtis
& Sandcrest.
Elev. = 1322.05 NAVD88



Vicinity Map



Baughman Company, P.A. 315 Ellis St. Wichita, KS 67211 P 316-262-7271 F 316-262-0149
ENGINEERING | SURVEYING | PLANNING | LANDSCAPE ARCHITECTURE