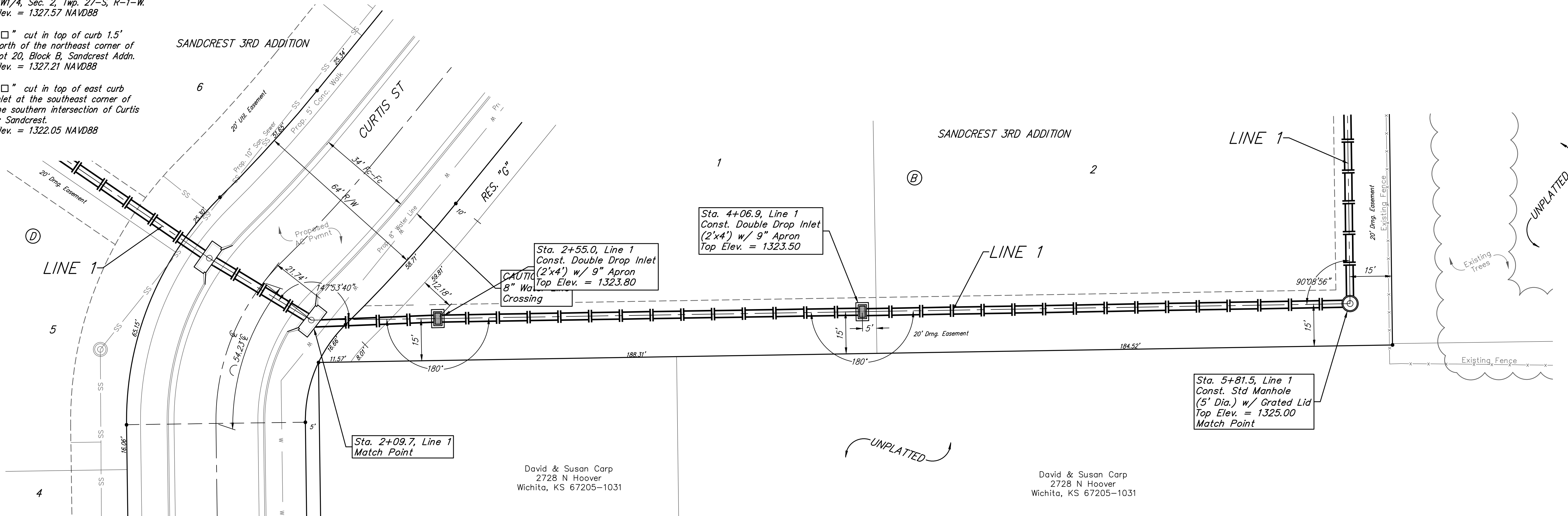
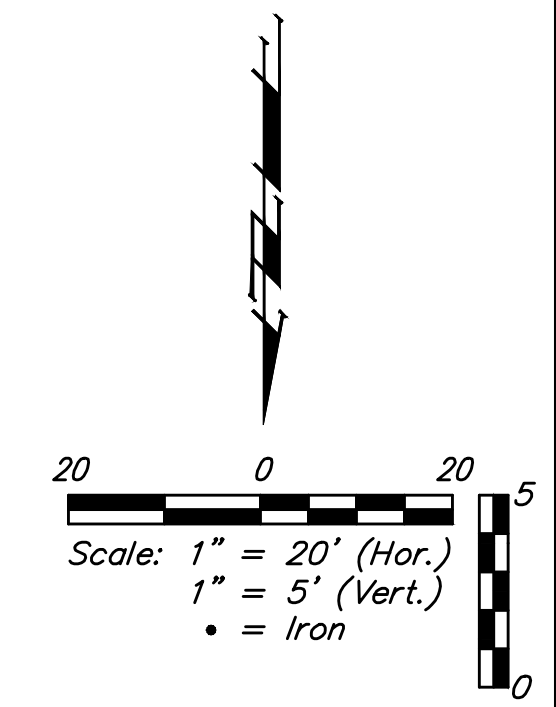


BENCHMARKS:
 City of Wichita Benchmark Disk
 34.9' S. & 31.2' W. of the SW Cor.,
 NW1/4, Sec. 2, Twp. 27-S, R-1-W.
 Elev. = 1327.57 NAVD88

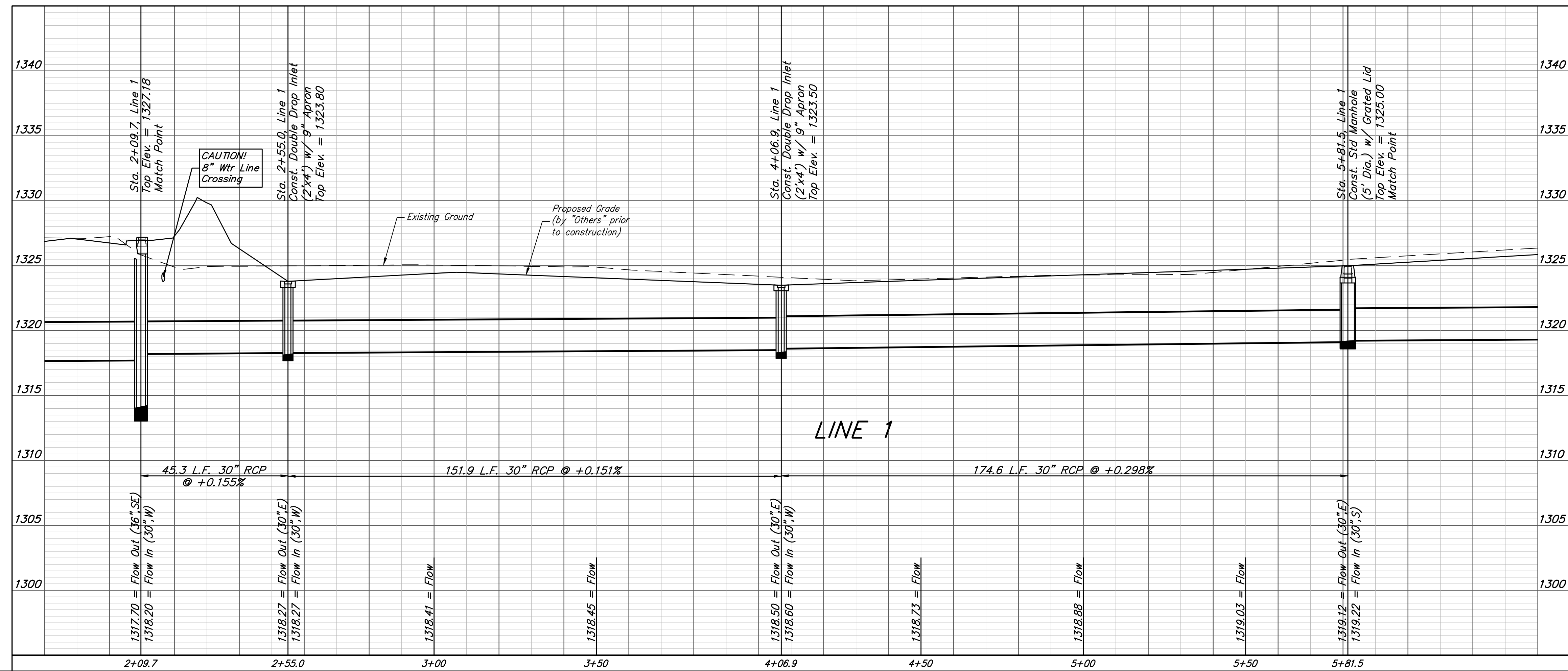
"□" cut in top of curb 1.5'
 north of the northeast corner of
 Lot 20, Block B, Sandcrest Addn.
 Elev. = 1327.21 NAVD88

"□" cut in top of east curb
 inlet at the southeast corner of
 the southern intersection of Curtis
 & Sandcrest.
 Elev. = 1322.05 NAVD88



David & Susan Carp
 2728 N Hoover
 Wichita, KS 67205-1031

David & Susan Carp
 2728 N Hoover
 Wichita, KS 67205-1031



		Sandcrest 3rd Addition	
		LINE 1	
Storm Water Sewer Improvements		Baughman Company, P.A. 315 Ellis St. Wichita, KS 67211 P 316-262-7271 F 316-262-0149 ENGINEERING SURVEYING PLANNING LANDSCAPE ARCHITECTURE	
PROJECT NUMBER 472-85423	DESIGN AEG	DRAWN JAK	APPROVED DATE 1/15/18
REVISIONS:	SCALE Noted		
			20 OF 50

I:\Projects\Sandcrest 3rd Addition_1706P290\Engineering\Phase 1\Str 16-11-E584\SWS PLANS.dwg