

BENCHMARK:
 BM #2 - "C" Chiseled on Top of Curb at West End of Median in Shadow Lakes Interchange
 Sta. 7+83, 53' Rt.
 Elev. = 1363.41 (NGVD 29)

CAUTION!
 Existing O/H Elec Crossing

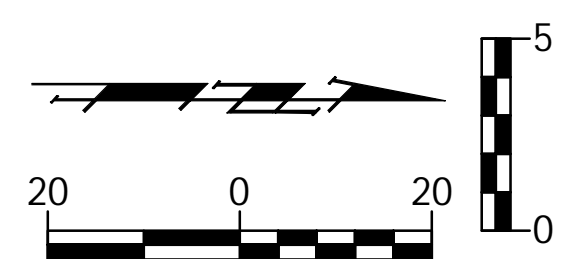
CAUTION!
 Existing 16" Water Crossing

CAUTION!
 Proposed 16" Water Crossing

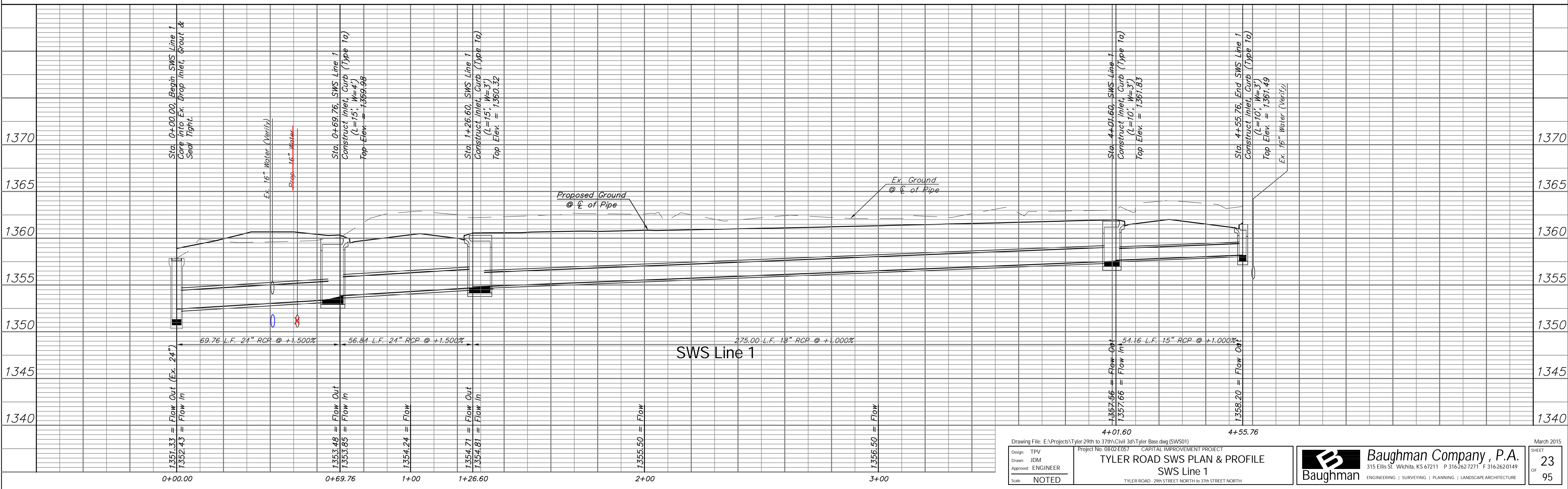
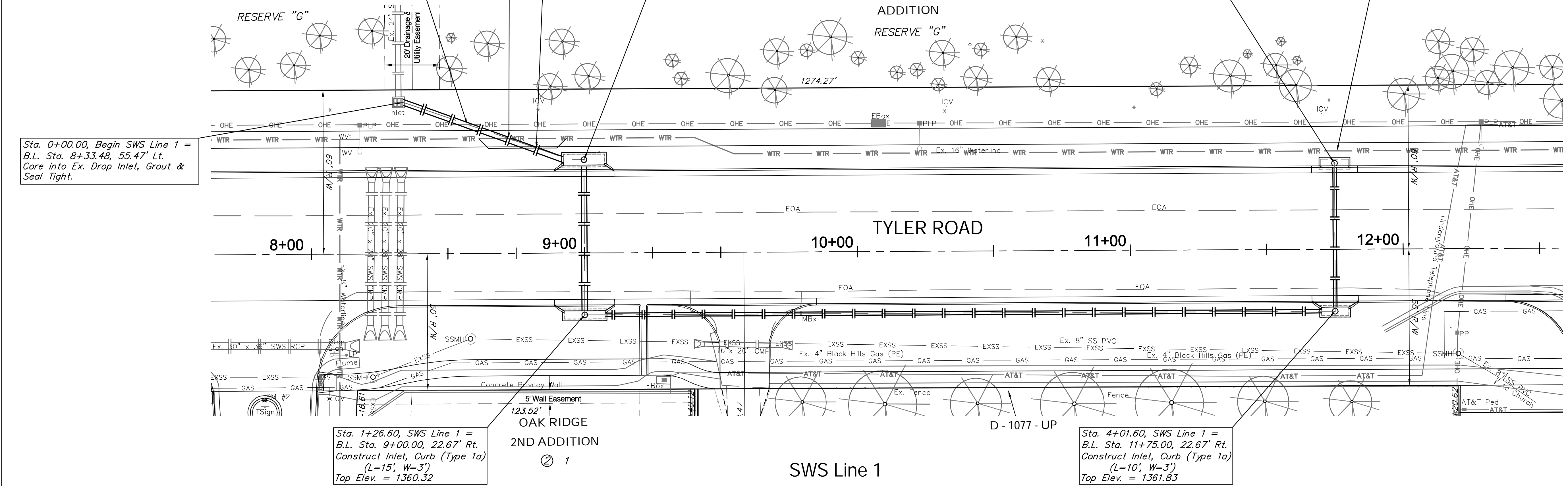
Sta. 0+69.76, SWS Line 1 =
 B.L. Sta. 9+00.00, 34.17' Lt.
 Construct Inlet, Curb (Type 1a)
 (L=15', W=4')
 Top Elev. = 1359.98

Sta. 4+55.76, End SWS Line 1 =
 B.L. Sta. 11+75.00, 31.50' Lt.
 Construct Inlet, Curb (Type 1)
 (L=10', W=3')
 Top Elev. = 1361.49

CAUTION!
 Existing 16" Water Crossing



SCALE:
 1" = 20' Horizontal
 1" = 5' Vertical



Drawing File: E:\Projects\Tyler-29th to 37th\Civil-30\Tyler Base.dwg (SWS01)
 Project No. 0802E057 CAPITAL IMPROVEMENT PROJECT
TYLER ROAD SWS PLAN & PROFILE
SWS Line 1
 TYLER ROAD - 29th STREET NORTH to 37th STREET NORTH
 Design: TPV
 Drawn: JDM
 Approved: ENGINEER
 Scale: NOTED

Baughman Company, P.A.
 315 Ellis St. Wichita, KS 67211 P 316-262-7271 F 316-262-0149
 ENGINEERING | SURVEYING | PLANNING | LANDSCAPE ARCHITECTURE

March 2015
 SHEET
23
 OF
95