

Street Paving for Blackstone with Incidental SWS Improvements

to serve

BLACKSTONE ADDITION - PHASE II

Blackstone: From the North Line of 13th St. N., North to the South Line of Lot 1, Block B

Price: From Obsidian to the West Line of Blackstone

Obsidian, and Obsidian Ct.: From the North Line of Lot 4, Block D, West to and Including the Cul-de-sac

Price: From the East Line of Blackstone, East to the East Line of the Plat

CITY OF WICHITA, KANSAS

Gary Janzen, P.E. City Engineer

Project Number

472-84398

O.C.A. Number

766324

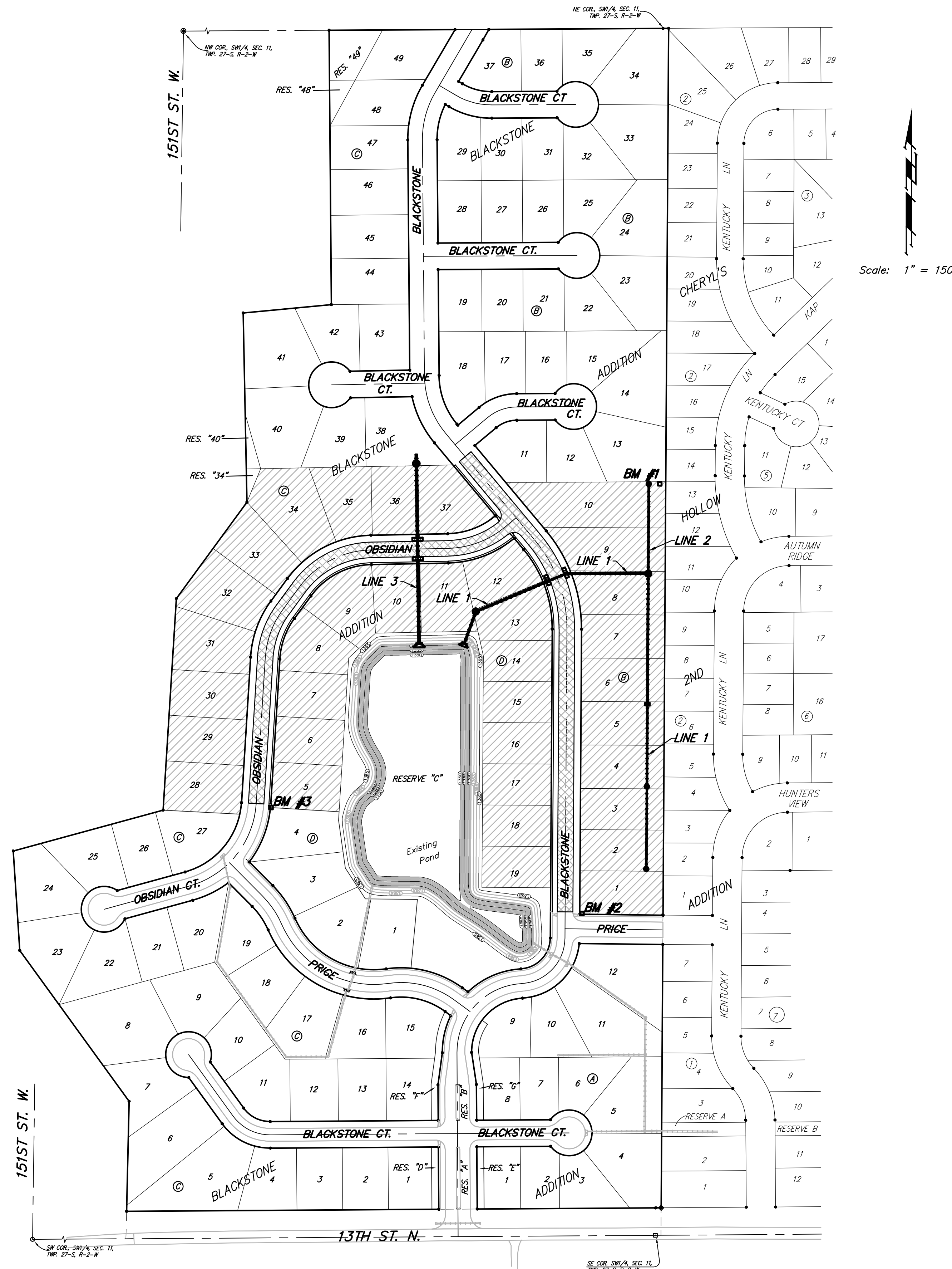
Kansas Paving/Mies Construction - Contractor
G. Baalman - City of Wichita, Field Project Engineer
S. May - City of Wichita, Inspector (Paving)
T. Collins - City of Wichita, Inspector (SWS)
As-built
Completion Date: 4/20/2016

GENERAL NOTES:

- Contractor will be required to provide notice to utility companies a minimum of forty-eight (48) hours prior to any excavation, as follows:
 Kansas One-Call 687-2470
 The Contractor must notify the following in case of an emergency:
 Cox Communications 262-4270
 Kansas Gas Service 1-888-482-4950
 Westar Energy 383-8650
 Aquilo Energy 1-800-303-0357
 ATT 268-2245
 City of Wichita Water Dept. 268-4563
 City of Wichita Sewer Maint. 268-4024
 City of Wichita Storm Sewer Maint. 268-4090
 City of Wichita Traffic Maint. 268-4034
 Conoco Phillips Pipeline Co. 1-877-267-2290
 Southern Star Pipeline Co. 529-6600
 Kinder-Morgan Pipeline Co. 1-888-844-565
- Utility service lines, poles, valve boxes, meters, and etcetera are to be adjusted as necessary by others prior to construction unless the plans specifically call for their adjustment by the Contractor or unless the plans specifically identify a utility to be adjusted by its owner during construction. Existing utilities and their location, as shown on the plans, represent the best information obtainable for design. The Contractor will be required to work around existing utilities within the right-of-way which do not conflict with proposed construction.
- Rubble from the removal of miscellaneous structures and excess excavation which is to be wasted shall be disposed of on sites to be provided by the Contractor. These sites shall be approved by the Engineer as to suitability, appearance and site location. Locations, in the opinion of the Engineer, that will leave an unsightly appearance will not be approved. All disposal sites must be approved by the Kansas Department of Health and Environment. Material either stockpiled or disposed of in a flood plain would require a Kansas State Board of Agriculture permit. Any material dumped in waters of the United States or wetlands is subject to U.S. Corps of Engineers permitting regulations. Any material buried or stockpiled beyond approved construction limits would require additional archaeological investigations unless buried in a previously approved borrow location.
- Trees and shrubs in public right-of-way which are in direct conflict with proposed new construction shall be removed by the Contractor with the Engineer's approval. Trees and shrubs which are not in direct conflict with proposed new construction shall be saved and protected from damage.
- The Contractor shall give all property owners and/or tenants of developed property abutting the construction of this project a minimum of ten (10) days notice prior to start of construction.
- The Contractor shall be responsible for preserving property irons. The Contractor will be required to re-establish any property irons which are damaged or destroyed by his construction operations. Such irons shall be re-established by a licensed land surveyor in accordance with state laws.
- Any excess excavation shall remain on-site and shall be spread evenly on the lots outside of easements & R/W's

Project Earthwork Totals	Excavation	Loose Fill	Compacted Fill
Street R/W's	1306 CY	553 CY	184 CY
Easements	360 CY	630 CY	-
Total:	1,666 CY	1,183 CY	184 CY
Contractor Borrow = 71 CY			
Total Project Length			
2046.0 L.F. = 0.39 Miles			

Storm Water Certification:
 These construction plans were prepared in accordance with the current Storm Water Management Regulations as set forth in the City of Wichita's Storm Water Management Ordinance 16.32 and the policies/guidelines presented in the Wichita/Sedgewick County Storm Water Manual.
 Disturbed Area = 60.0 ac.
 Water Quality Treatment: Provided by pond
 Downstream Channel Protection: The site utilizes an existing pond with an established outfall structure, so no specific downstream channel protection is provided for.

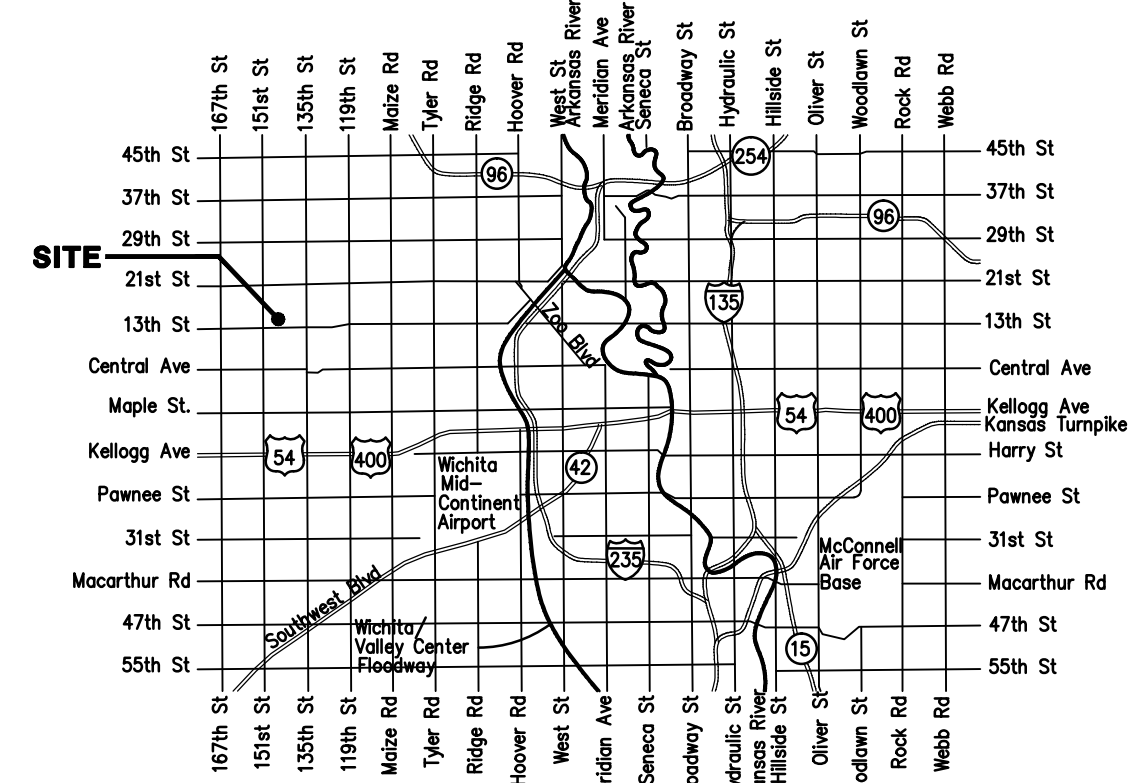


Sheet Index

Title Sheet	1
35' Pavement Detail	2
Curb & Gutter Detail	3
Sign Detail	4
Miscellaneous Details	5
Pavement Underdrain Details	6
Blackstone	7-8
Obsidian	9-10
SWS Line 1	11-13
SWS Line 2	14
SWS Line 3	15
Erosion Control/Esmt. Grading Plan	16
Erosion Control BMP Details	17-20
Std. Type 1A Curb Inlet Detail	21
Precast Concrete Manhole Detail	22
Ring & Cover Detail	23
Backyard Inlet Detail	24
Drop Inlet Detail	25
Headwall Details	26-27
Earthwork Cross Sections	28-31
Coordinate Sheet	32
Copy of Plat	33

Benchmarks

BM #1: Railroad Spike in HLP near the NE Corner Lot 10, Block B, Blackstone Addition (W. Face of HLP). Elev. = 1368.11 NGVD29
 BM #2: "X" Cut in concrete walk, SW Corner Lot 1, Block B, Blackstone Addition (W. Face of HLP). Elev. = 1368.68 NGVD29
 BM #3: "V" Cut in concrete walk, SW Corner Lot 5, Block D, Blackstone Addition (W. Face of HLP). Elev. = 1374.01 NGVD29



Vicinity Map

Benefit District Proposed Streets



Baughman Company, P.A. 315 Ellis St. Wichita, KS 67211 P 316-262-7271 F 316-262-0149
 ENGINEERING | SURVEYING | PLANNING | LANDSCAPE ARCHITECTURE