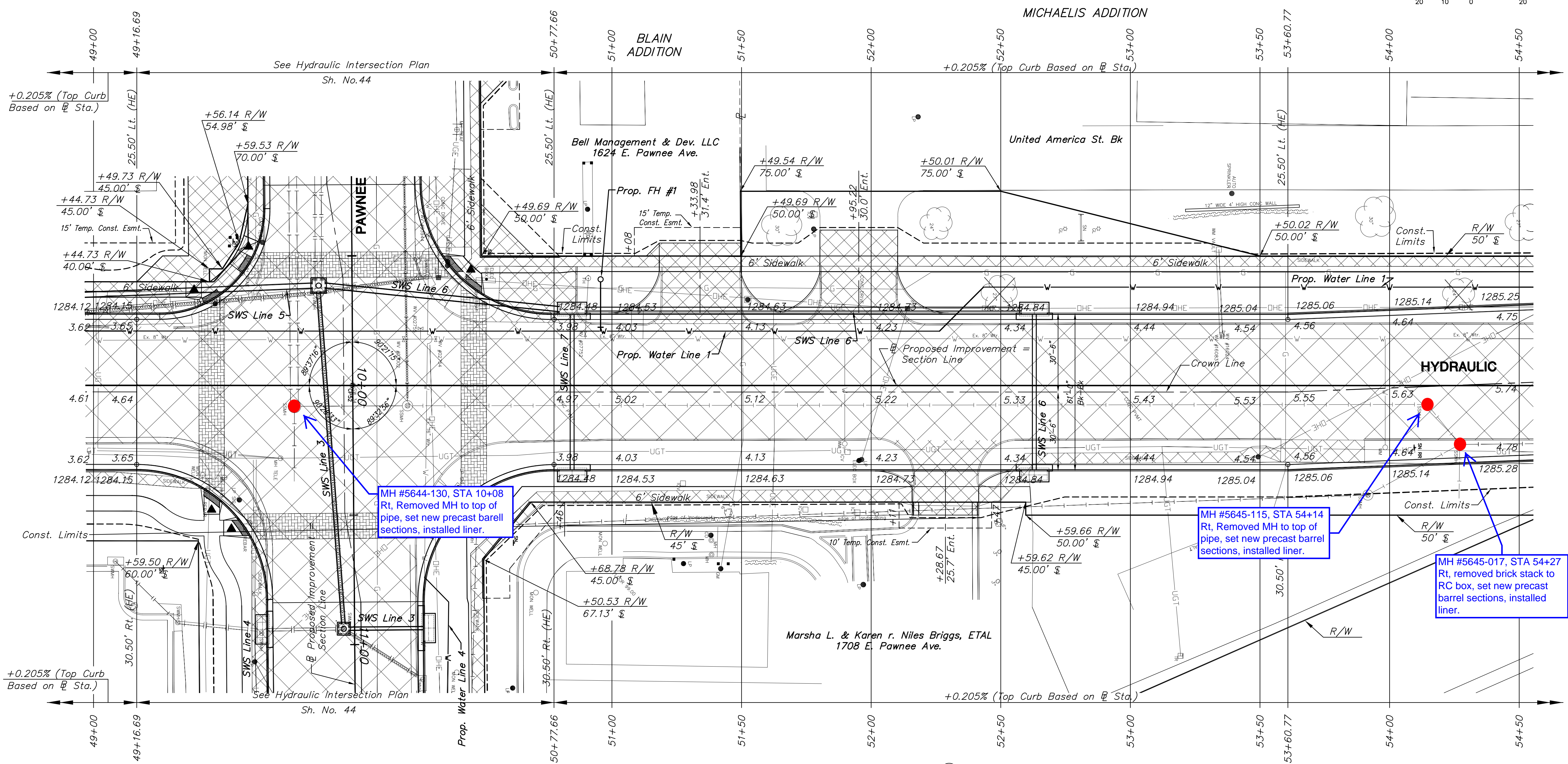
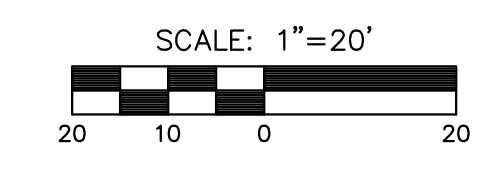


SE 1/4 Sec. 33, T27S, R1E



MH #5644-130, STA 10+08
Rt. Removed MH to top of pipe, set new precast barrel sections, installed liner.

MH #5645-115, STA 54+14
Rt. Removed MH to top of pipe, set new precast barrel sections, installed liner.

MH #5645-017, STA 54+27
Rt. removed brick stack to RC box, set new precast barrel sections, installed liner.

UTILITY ADJUSTMENTS				
STATION	OFFSET	EXISTING ELEVATION	PROPOSED ELEVATION	REMARKS
50+89.71	19.9' Lt.	1284.30	1284.32	Valve Box Adjusted
51+07.55	30.1' Lt.	1285.25		Water Meter Installed (See General Note)
51+12.13	29.8' Lt.	1285.21		Water Meter Installed (See General Note)
51+89.83	22.5' Rt.	1285.36		Water Meter Installed (See General Note)
53+34.98	19.6' Lt.	1284.57	1284.84	Valve Box Adjusted
53+36.05	20.1' Lt.	1284.52	1284.82	Valve Box Adjusted
53+98.31	23.8' Rt.	1285.55		Water Meter Installed (See General Note)
54+14.53	7.3' Rt.	1285.08	1285.46	Manhole Adjusted w/o New Ring & Cover
54+27.07	22.7' Rt.	1285.98	1285.01	Manhole Adjusted w/ New Ring & Cover

- Horizontal Control Point #52
 1. Southwest Corner of Sec. 34, T27S, R1E
 2. Sta. 10+00.00, 0.00' Rt.
 N = 1672714.52 E = 1654982.05
 3. 3/4" pipe in thimble
 4. to "+" on top of curb 47.20' NW
 5. to "+" on top of curb 52.74' SW
 6. to "+" on top of curb 57.30' SE
 7. to "+" on top of curb 49.33' NE

BM#1 City of Wichita Disk on railroad crossing sign, East of Hydraulic, South of Pawnee
 Sta. 49+63.68, 288.12' Rt. El. 1288.35 (NAVD 88)

PIZZA HUT PAWNEE/
 HYDRAULIC ADDITION
 SW 1/4 Sec. 34, T27S, R1E

LEGEND

	Mill & Overlay		Stamped, Concrete
	Full-depth Asphalt Widening		Riprap, Light Stone
	Pavement/Walk Removal		Aggregate Surfacing
	Brick Pavers		Construct Wheelchair Ramp See Sh. No. 44 & 65
	AC Patch		XXXXX SWS or SS Removal
			Tree Removal

STREET IMPROVEMENTS FOR:
PAWNEE AVENUE
 FROM HYDRAULIC TO POPLAR
 WICHITA, KANSAS

©2013 MKEC Engineering
 All Rights Reserved
 www.mkec.com
 These drawings and their contents, including, but not limited to, all concepts, designs, & ideas are the exclusive property of MKEC Engineering (MKEC), and may not be used or reproduced in any way without the express consent of MKEC.

PAVING PLAN
 STA. 49+00 TO
 STA. 54+50

PROJECT NO.	87 N-0597-01	
DATE	DATE	
SCALE	1"=20'	
DESIGNED	DRAWN	CHECKED
JRA	JSB	LAC

NO.	REVISION	DATE
SHEET NO.		
19 OF 191		