

STATE	PROJECT NO.	YEAR	SHEET NO.	TOTAL SHEETS
KANSAS	87 N-0615-01	2017	5	183



PLOTTED: Wednesday, November 29, 2017 8:05:17PM

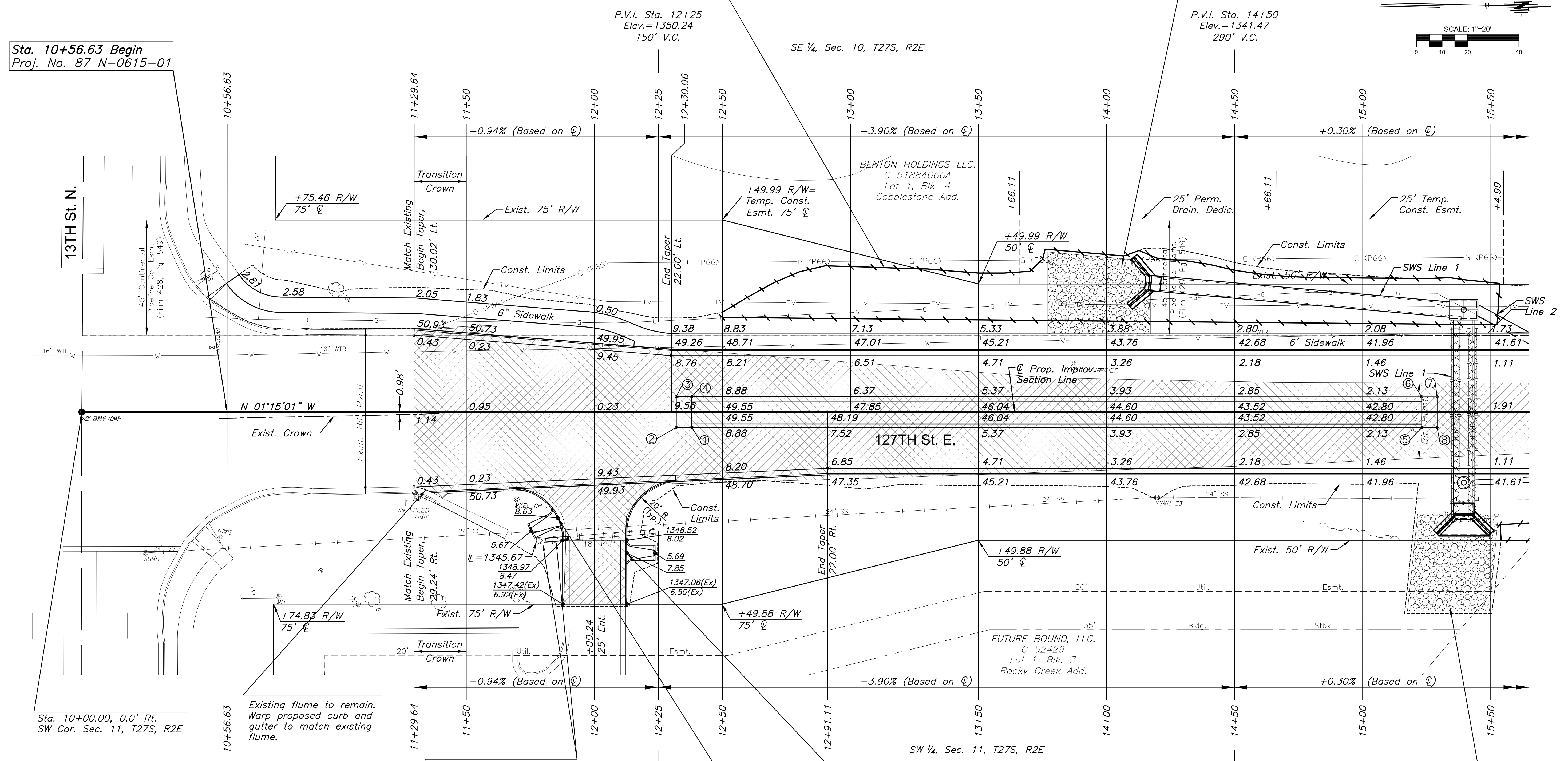
- SW Cor. Sec. 11, T27S, R2E  
Sta. 10+00.00, 0.00' Rt.
1. Found 3/8" rebar with Garber cap
  2. Chiseled "X" on se cor. conc. traffic signal pole base 71.91' NW
  3. Chiseled "X" on southerly cor. of conc. traffic signal pole base 72.35' NE
  4. Chiseled "X" on nw cor. of conc. traffic signal pole base 71.08' SE
  5. Chiseled "X" on easterly cor. of conc. traffic signal pole base 68.57' SW
  6. N=1694562.090, E=1691609.681

PI Sta. 10+00.00, 127th St. E.  
1. N=1694562.090, E=1691609.681

Sta. 10+56.63 Begin  
Proj. No. 87 N-0615-01

Sta. 12+50 to Sta. 15+50, clear and grub approximately 0.14 acres of trees within the construction limits. Paid for as "Site Clearing".

Construct 129.2 S.Y. of Rip-Rap, Light Stone. See Sheet 66 and 122. See Sheet 15 for Special Grading Plan.



MEDIAN POINTS				
POINT NO.	STATION	OFFSET	TOP CURB ELEVATION	FLOWLINE ELEVATION
1	12+38.00	6.00' Rt.	1349.90	1349.23
2	12+32.00	6.00' Rt.	1349.39	1349.39
3	12+32.00	6.00' Lt.	1349.37	1349.37
4	12+38.00	6.00' Lt.	1349.88	1349.21
5	15+23.00	6.00' Rt.	1341.92	1341.92
6	15+23.00	6.00' Lt.	1341.92	1341.92
7	15+29.00	6.00' Lt.	1342.55	1341.88
8	15+29.00	6.00' Rt.	1342.55	1341.88

BM#1 Chiseled square on top of curb on the east side of 127th street North of 13th Street at the start of a flume. Sta. 11+30.02, 31.54' Rt., Elev.=1350.995 (NAVD 88)

UTILITY ADJUSTMENT TABLE				
STATION	OFFSET	EXIST. ELEV.	PROP. ELEV.	REMARKS
14+19.68	33.26' RT.	1343.86	1343.87	MH ADJUSTED

- LEGEND**
- Pavement Removal
  - Construct Wheelchair Ramp See Sh. No. 53
  - Tree Removal
  - Tree Row Removal
  - Tree Area Removal Boundary
  - Storm Sewer Removal

STREET IMPROVEMENTS FOR

**127TH STREET EAST**

FROM 13TH STREET NORTH TO 21ST STREET NORTH

©2017 MKEC Engineering All Rights Reserved  
www.mkec.com  
These drawings and their contents, including, but not limited to, all concepts, designs, & ideas are the exclusive property of MKEC Engineering (MKEC), and may not be used or reproduced in any way without the express consent of MKEC.

**PAVING PLAN**  
STA. 10+00 TO  
STA. 15+50

PROJECT NO.	472-85158
DATE	11/29/17
SCALE	1"=20'
DESIGNED	JRA
DRAWN	WNJ
CHECKED	JRA

NO.	REVISION	DATE

SHEET NO.  
**5 OF 183**