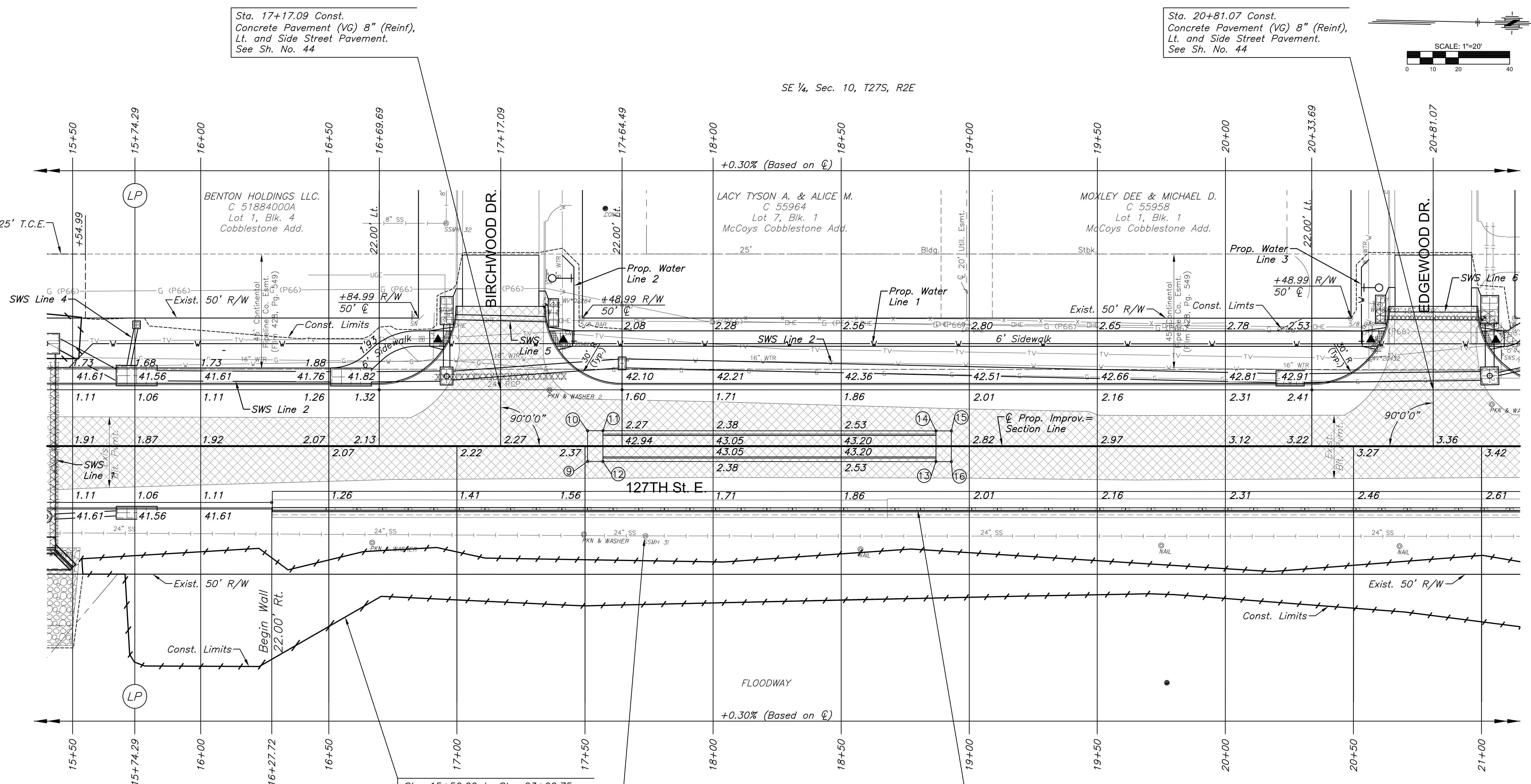
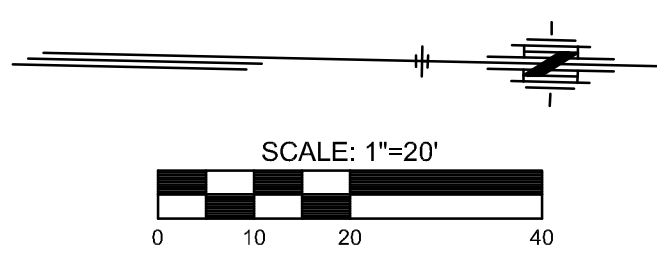


PLOTTED: Wednesday, November 29, 2017 @ 08:17PM  
 J:\PROJECTS\2017\1401040290 - COM\_127TH E. 13TH TO 21ST\05-CIVIL\CAD\PAV\4282E02.DWG



Sta. 20+81.07 Const.  
Concrete Pavement (VG) 8" (Reinf),  
Lt. and Side Street Pavement.  
See Sh. No. 44



Sta. 17+17.09 Const.  
Concrete Pavement (VG) 8" (Reinf),  
Lt. and Side Street Pavement.  
See Sh. No. 44

Sta. 15+50.00 to Sta. 23+22.75  
clear and grub approximately 0.39  
acres of trees within the construction  
limits. Paid for as "Site Clearing".

Sta. 17+73.62, 35.05' Rt. Const.  
"Manhole Adjusted, Special".  
See Sh. No. 74, 75

Sta. 16+27.72 to Sta. 23+27.72  
Const Concrete Retaining Wall with  
traffic Rail and Bicycle Rail.  
See Sht. No. 76

BM#2 Chiseled square top of curb in front of a FH at the  
northwest cor. of 127th street North & Birchwood Dr.  
Sta. 17+34.47, 54.79' Lt., Elev.=1342.27 (NAVD 88)

MEDIAN POINTS				
POINT NO.	STATION	OFFSET	TOP CURB ELEVATION	FLOWLINE ELEVATION
9	17+51.00	6.00' Rt.	1342.23	1342.23
10	17+51.00	6.00' Lt.	1342.23	1342.23
11	17+57.00	6.00' Lt.	1342.92	1342.25
12	17+57.00	6.00' Rt.	1342.92	1342.25
13	18+87.00	6.00' Rt.	1343.31	1342.64
14	18+87.00	6.00' Lt.	1343.31	1342.64
15	18+93.00	6.00' Lt.	1342.65	1342.65
16	18+93.00	6.00' Rt.	1342.65	1342.65

UTILITY ADJUSTMENT TABLE				
STATION	OFFSET	EXIST. ELEV.	PROP. ELEV.	REMARKS
17+44.65	65.55' LT.		1342.85	VALVE BOX ADJUSTED
17+45.65	41.00' LT.		1341.97	VALVE BOX ADJUSTED
17+73.62	35.05' RT.	1340.10	1336.23	MH ADJUSTED, SPECIAL
20+53.03	41.00' LT.		1342.51	VALVE BOX ADJUSTED
20+54.03	61.94' LT.		1343.37	VALVE BOX ADJUSTED

- LEGEND**
- Pavement Removal
  - Construct Wheelchair Ramp See Sh. No. 53
  - Tree Removal
  - Tree Row Removal
  - Tree Area Removal Boundary
  - Storm Sewer Removal

STREET IMPROVEMENTS FOR  
**127TH STREET EAST**  
 FROM 13TH STREET NORTH TO 21ST STREET NORTH

©2017 MKEC Engineering  
All Rights Reserved  
www.mkec.com  
These drawings and their contents, including, but not limited to, all concepts, designs, & ideas are the exclusive property of MKEC Engineering (MKEC), and may not be used or reproduced in any way without the express consent of MKEC.

**PAVING PLAN**  
STA. 15+50 TO  
STA. 21+00

PROJECT NO.	472-85158
DATE	11/29/17
SCALE	1"=20'
DESIGNED	JRA
DRAWN	WNJ
CHECKED	JRA

NO.	REVISION	DATE

SHEET NO.  
**6 OF 183**