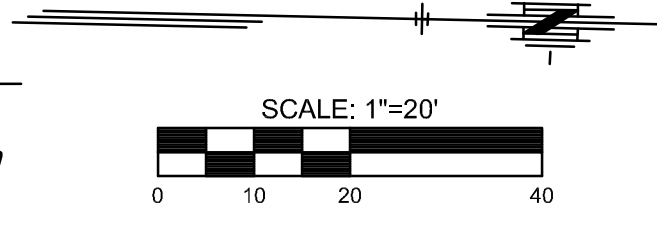
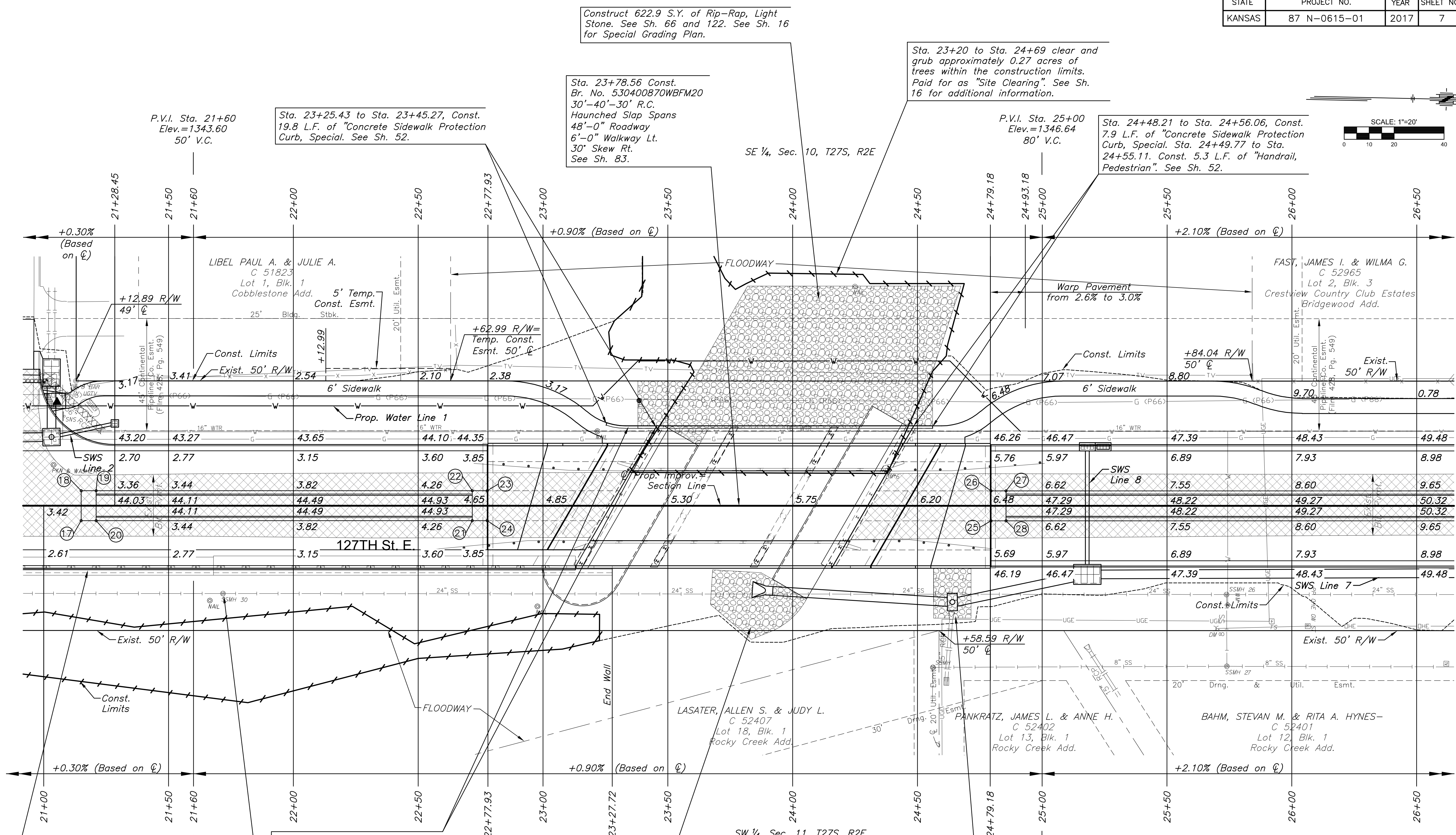


STATE	PROJECT NO.	YEAR	SHEET NO.	TOTAL SHEETS
KANSAS	87 N-0615-01	2017	7	183



PLOTTED: Wednesday, November 29, 2017 @ 02:18PM  
 J:\PROJECTS\2017\1401040290 - COM\_127TH E 13TH TO 21ST\05-CIVIL\CA\PAV\428\REV03.DWG



Construct 622.9 S.Y. of Rip-Rap, Light Stone. See Sh. 66 and 122. See Sh. 16 for Special Grading Plan.

Sta. 23+20 to Sta. 24+69 clear and grub approximately 0.27 acres of trees within the construction limits. Paid for as "Site Clearing". See Sh. 16 for additional information.

Sta. 23+78.56 Const. Br. No. 530400870WBFM20 30'-40'-30' R.C. Haunched Slap Spans 48'-0" Roadway 6'-0" Walkway Lt. 30' Skew Rt. See Sh. 83.

Sta. 23+25.43 to Sta. 23+45.27, Const. 19.8 L.F. of "Concrete Sidewalk Protection Curb, Special. See Sh. 52.

Sta. 24+48.21 to Sta. 24+56.06, Const. 7.9 L.F. of "Concrete Sidewalk Protection Curb, Special. Sta. 24+49.77 to Sta. 24+55.11, Const. 5.3 L.F. of "Handrail, Pedestrian". See Sh. 52.

P.V.I. Sta. 21+60 Elev.=1343.60 50' V.C.

P.V.I. Sta. 25+00 Elev.=1346.64 80' V.C.

Sta. 23+38.96 to Sta. 23+44.29, Const. 5.3 L.F. of "Handrail, Pedestrian". See Sh. 52.

Construct 73.4 S.Y. of Rip-Rap, Light Stone. See Sh. 66 and 122. See Sh. 15 for Special Grading Plan.

P.V.I. Sta. 25+00 Elev.=1346.64 80' V.C.

P.V.I. Sta. 21+60 Elev.=1343.60 50' V.C.

Sta. 21+71.78, 35.17 Rt. Const. "Manhole Adjusted, Special". See Sh. 74 and 75.

Construct 32.5 S.Y. of Rip-Rap, Light Stone. See Sh. 66 and 122. See Sh. 15 for Special Grading Plan.

Sta. 16+27.72 to Sta. 23+27.72 Const Concrete Retaining Wall with traffic Rail and Bicycle Rail. See Sh. 76.

BM#6 Chiseled square on NE cor. of the north end of the west guardrail on the bridge between Castlewood Dr. & Edgewood Dr. Sta. 24+37.95, 14.15' Lt. Elev.=1348.14 (NAVD 88)

MEDIAN POINTS				
POINT NO.	STATION	OFFSET	TOP CURB ELEVATION	FLOWLINE ELEVATION
17	21+15.00	6.00' Rt.	1343.32	1343.32
18	21+15.00	6.00' Lt.	1343.32	1343.32
19	21+21.00	6.00' Lt.	1344.01	1343.34
20	21+21.00	6.00' Rt.	1344.01	1343.34
21	22+71.68	6.00' Rt.	1345.13	1344.46
22	22+71.68	6.00' Lt.	1345.13	1344.46
23	22+77.68	6.00' Lt.	1344.51	1344.51
24	22+77.68	6.00' Rt.	1344.51	1344.51
25	24+79.43	6.00' Rt.	1346.35	1346.35
26	24+79.43	6.00' Lt.	1346.35	1346.35
27	24+85.43	6.00' Lt.	1347.10	1346.43
28	24+85.43	6.00' Rt.	1347.09	1346.42

UTILITY ADJUSTMENT TABLE				
STATION	OFFSET	EXIST. ELEV.	PROP. ELEV.	REMARKS
21+71.78	35.17' RT.	1342.79	1337.40	MH ADJUSTED, SPECIAL

STREET IMPROVEMENTS FOR

# 127TH STREET EAST

FROM 13TH STREET NORTH TO 21ST STREET NORTH

©2017 MKEC Engineering All Rights Reserved  
 These drawings and their contents, including, but not limited to, all concepts, designs, & ideas are the exclusive property of MKEC Engineering (MKEC), and may not be used or reproduced in any way without the express consent of MKEC.

PAVING PLAN  
 STA. 21+00 TO  
 STA. 26+50

PROJECT NO.	472-85158
DATE	11/29/17
SCALE	1"=20'
DESIGNED	JRA
DRAWN	WNJ
CHECKED	JRA

**LEGEND**

- Pavement Removal
- Construct Wheelchair Ramp See Sh. No. 53
- Tree Removal
- Tree Row Removal
- Tree Area Removal Boundary
- Storm Sewer Removal

NO.	REVISION	DATE

SHEET NO. 7 OF 183