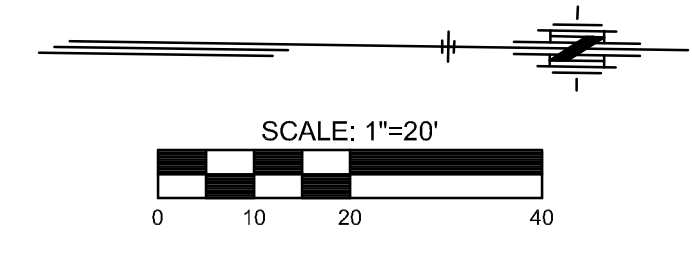
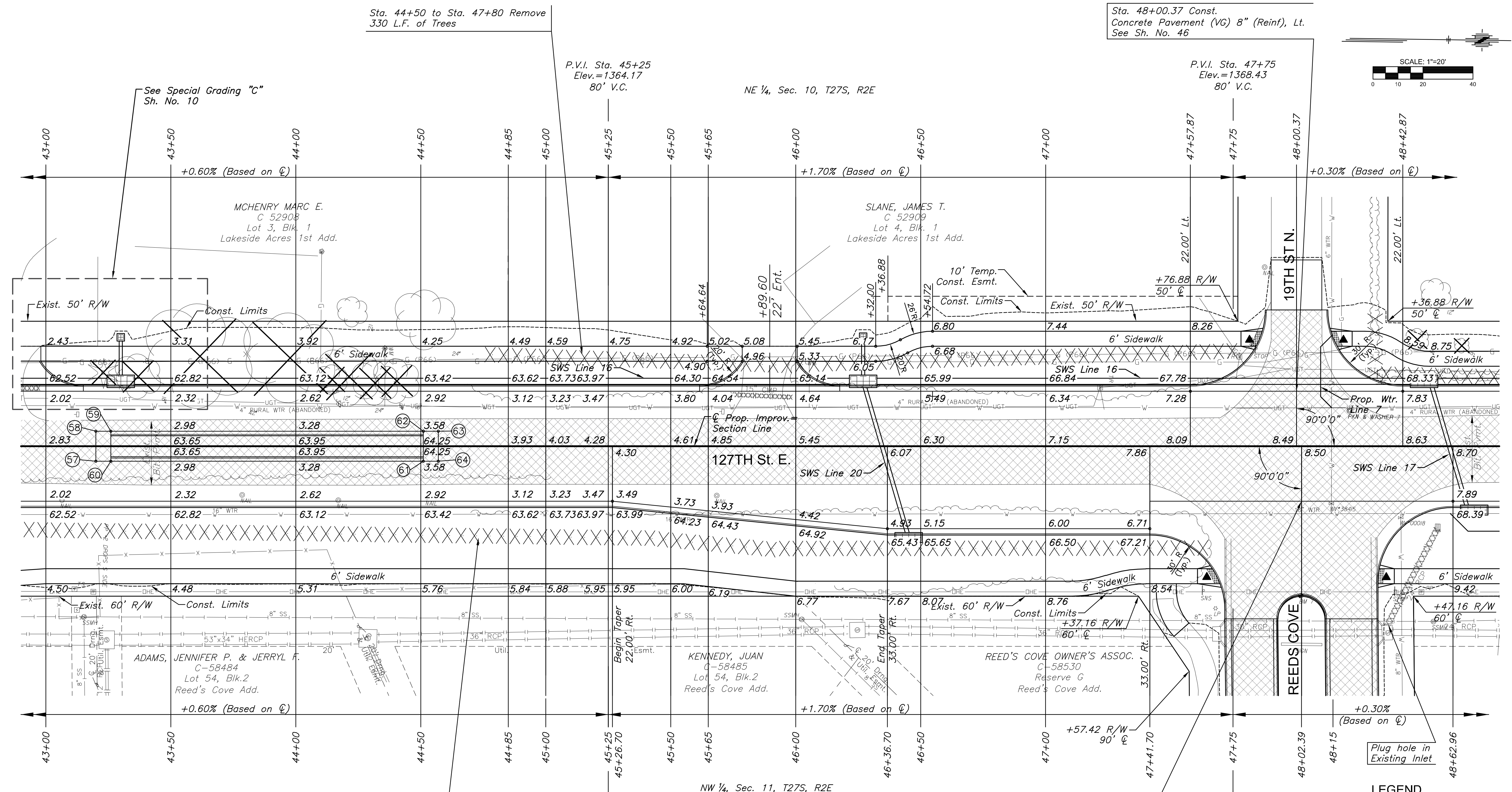


PLOT DATE: Wednesday, November 29, 2017 @ 02:20PM
J:\PROJECTS\2017\1401040290 - COM_127TH E. 13TH TO 21ST\05-CIVIL\CA\PAV\428\REV07.DWG



MEDIAN POINTS				
POINT NO.	STATION	OFFSET	TOP CURB ELEVATION	FLOWLINE ELEVATION
57	43+20.00	6.00' Rt.	1363.14	1363.14
58	43+20.00	6.00' Lt.	1363.14	1363.14
59	43+26.00	6.00' Lt.	1363.84	1363.17
60	43+26.00	6.00' Rt.	1363.84	1363.17
61	44+51.00	6.00' Rt.	1364.34	1363.67
62	44+51.00	6.00' Lt.	1364.34	1363.67
63	44+57.00	6.00' Lt.	1363.69	1363.69
64	44+57.00	6.00' Rt.	1363.69	1363.69

UTILITY ADJUSTMENT TABLE				
STATION	OFFSET	EXIST. ELEV.	PROP. ELEV.	REMARKS
44+35.66	39.18' LT.			WATER METER RELOCATED
46+05.43	35.81' LT.			WATER METER RELOCATED
48+14.30	22.91' RT.	1369.21	1367.86	VALVEBOX ADJUSTED
48+42.02	28.57' RT.		1367.91	VALVEBOX ADJUSTED

- LEGEND**
- Pavement Removal
 - Construct Wheelchair Ramp See Sh. No. 53
 - Tree Removal
 - Tree Row Removal
 - Tree Area Removal
 - Storm Sewer Removal

STREET IMPROVEMENTS FOR
127TH STREET EAST
FROM 13TH STREET NORTH TO 21ST STREET NORTH

©2017 MKEC Engineering
All Rights Reserved
www.mkec.com
These drawings and their contents, including, but not limited to, all concepts, designs, & ideas are the exclusive property of MKEC Engineering (MKEC), and may not be used or reproduced in any way without the express consent of MKEC.

PAVING PLAN STA. 43+00 TO STA. 48+50	
PROJECT NO.	472-85158
DATE	11/29/17
SCALE	1"=20'
DESIGNED	DRAWN
JRA	WNJ
CHECKED	JRA
NO.	REVISION
SHEET NO. 11 OF 183	

BM#7 Chiseled square on top of curb west end of the island at 127th Street North & Reeds Cove.
Sta. 48+02.06, 59.76' Rt. Elev.=1370.15 (NAVD 88)