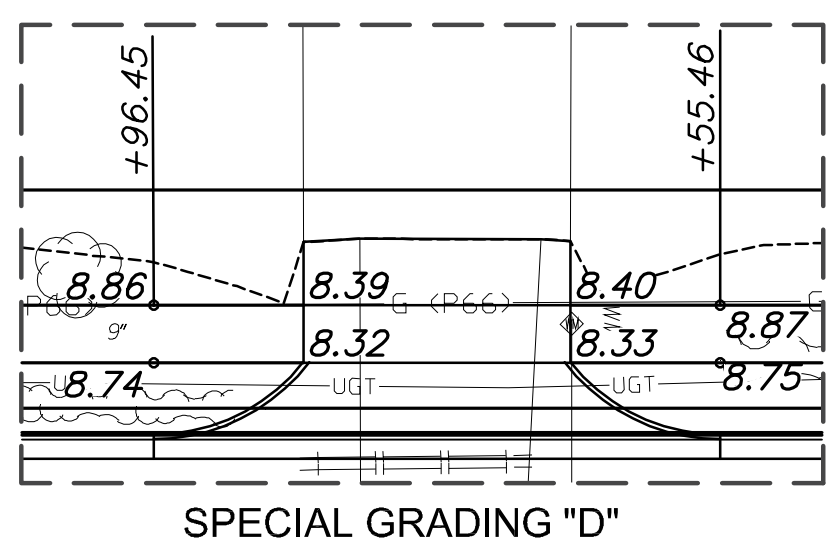
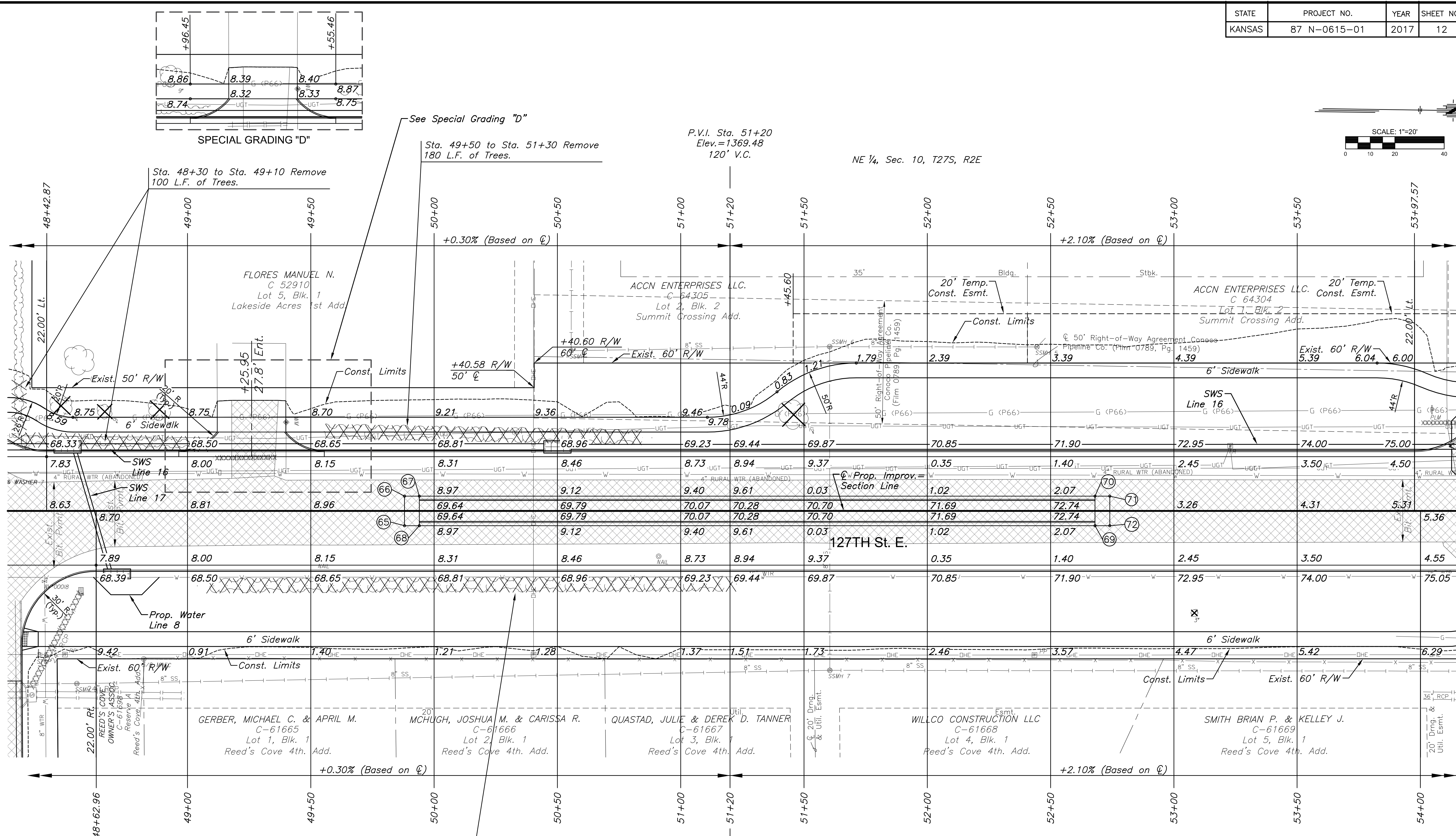
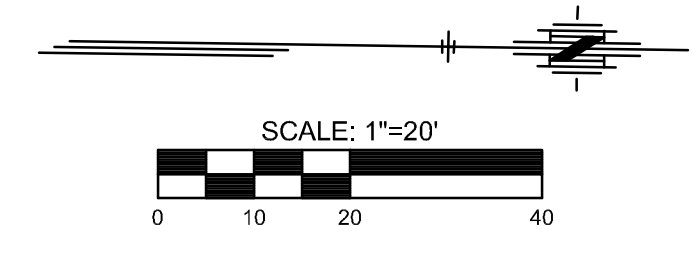


STATE	PROJECT NO.	YEAR	SHEET NO.	TOTAL SHEETS
KANSAS	87 N-0615-01	2017	12	183



POINT NO.	STATION	OFFSET	TOP CURB ELEVATION	FLOWLINE ELEVATION
65	49+88.00	6.00' Rt.	1368.93	1368.93
66	49+88.00	6.00' Lt.	1368.93	1368.93
67	49+94.00	6.00' Lt.	1369.62	1368.95
68	49+94.00	6.00' Rt.	1369.62	1368.95
69	52+68.00	6.00' Rt.	1373.11	1372.44
70	52+68.00	6.00' Lt.	1373.11	1372.44
71	52+74.00	6.00' Lt.	1372.57	1372.57
72	52+74.00	6.00' Rt.	1372.57	1372.57

STATION	OFFSET	EXIST. ELEV.	PROP. ELEV.	REMARKS
49+39.99	36.02' LT.			WATER METER RELOCATED
52+44.45	66.51' LT.	1371.18	1372.6	MH ADJUSTED

- LEGEND**
- Pavement Removal
  - Construct Wheelchair Ramp See Sh. No. 53
  - Tree Removal
  - Tree Row Removal
  - Tree Area Removal
  - Storm Sewer Removal

STREET IMPROVEMENTS FOR  
**127TH STREET EAST**  
 FROM 13TH STREET NORTH TO 21ST STREET NORTH

©2017 MKEC Engineering  
 All Rights Reserved  
 www.mkec.com  
 These drawings and their contents, including, but not limited to, all concepts, designs, & ideas are the exclusive property of MKEC Engineering (MKEC), and may not be used or reproduced in any way without the express consent of MKEC.

**PAVING PLAN**  
 STA. 48+50 TO  
 STA. 54+00

PROJECT NO.	472-85158	
DATE	11/29/17	
SCALE	1"=20'	
DESIGNED	JRA	
DRAWN	WNJ	
CHECKED	JRA	
NO.	REVISION	DATE

SHEET NO.  
 12 OF 183