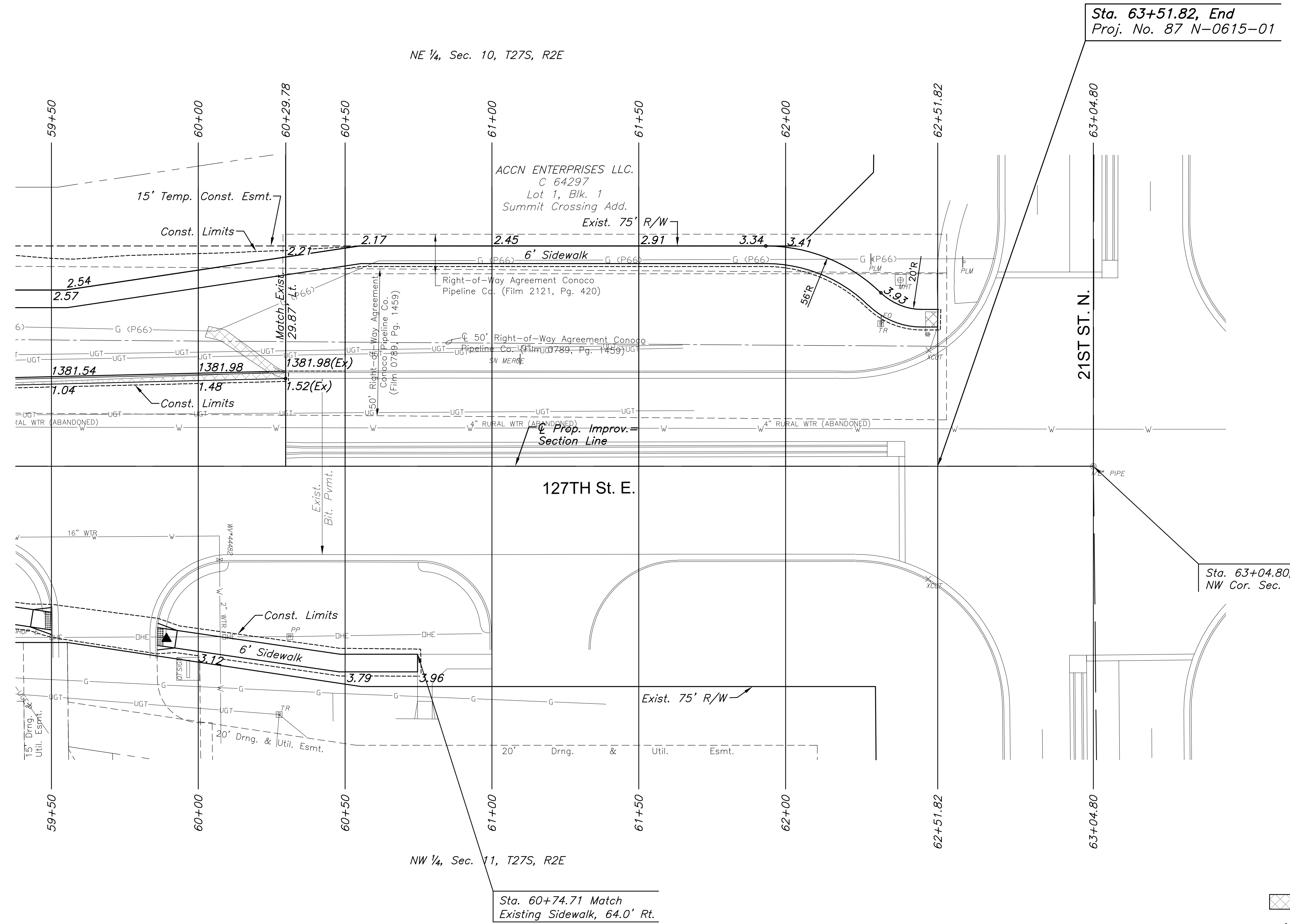


J:\PROJECTS\2017\1401040280 - COM_127TH E - 13TH TO 21ST\05-CIVIL\CAO\PAV\428REP10.DWG
 PLOTTED: Wednesday, November 29, 2017 @ 02:22PM

NW Cor. Sec. 11, T27S, R2E
 Sta. 63+04.80, 0.00' Rt.
 1. Found 1/2" pipe in thimble
 2. City of Wichita BM disc in conc. traffic signal base
 3. Chiseled "X" on top of curb
 4. Chiseled "X" on top of curb
 5. Chiseled "X" on top of curb
 6. N=1699865.966, E=1691512.073

PI Sta. 63+04.80, 127th St. E.
 1. N=1699865.966, E=1691512.073

STATE	PROJECT NO.	YEAR	SHEET NO.	TOTAL SHEETS
KANSAS	87 N-0615-01	2017	14	183



Sta. 63+51.82, End
 Proj. No. 87 N-0615-01

Sta. 63+04.80, 0.0' Rt.
 NW Cor. Sec. 11, T27S, R2E

Sta. 60+74.71 Match
 Existing Sidewalk, 64.0' Rt.

STREET IMPROVEMENTS FOR
127TH STREET EAST
 FROM 13TH STREET NORTH TO 21ST STREET NORTH

©2017 MKEC Engineering
 All Rights Reserved
 www.mkec.com
 These drawings and their contents, including, but not limited to, all concepts, designs, & ideas are the exclusive property of MKEC Engineering (MKEC), and may not be used or reproduced in any way without the express consent of MKEC.

PAVING PLAN
 STA. 59+50 TO
 STA. 63+04.80

PROJECT NO.	472-85158	
DATE	11/29/17	
SCALE	1"=20'	
DESIGNED	DRAWN	CHECKED
JRA	WNJ	JRA

LEGEND

- Pavement Removal
- Construct Wheelchair Ramp See Sh. No. 53
- Tree Removal
- Tree Row Removal
- Tree Area Removal
- Storm Sewer Removal

NO.	REVISION	DATE

SHEET NO. 14 OF 183