

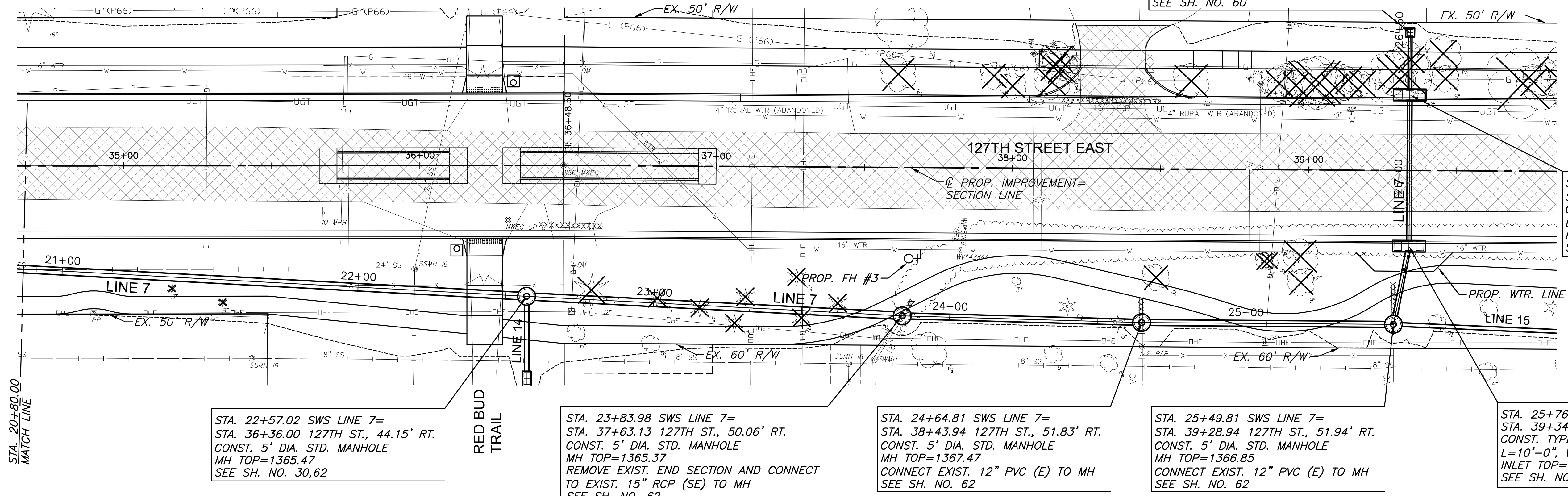
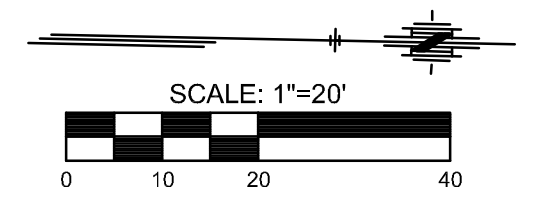
PLOTTED: Wednesday, November 29, 2017 @ 02:31PM

J:\PROJECTS\2017\11\11010207-COMV-127\FIE-13171 TO 21ST ST(S) CIVIL\DWG\STW12800.DWG

STATE	PROJECT NO.	YEAR	SHEET NO.	TOTAL SHEETS
KANSAS	87 N-0615-01	2017	27	183



STA. 26+48.80 SWS LINE 7=
STA. 39+34.00 127TH ST., 46.54' LT.
CONST. SINGLE DROP INLET W/9" APRON
L=2'-0", W=2'-0"
INLET TOP=1362.43
SEE SH. NO. 60



STA. 22+57.02 SWS LINE 7=
STA. 36+36.00 127TH ST., 44.15' RT.
CONST. 5' DIA. STD. MANHOLE
MH TOP=1365.47
SEE SH. NO. 30,62

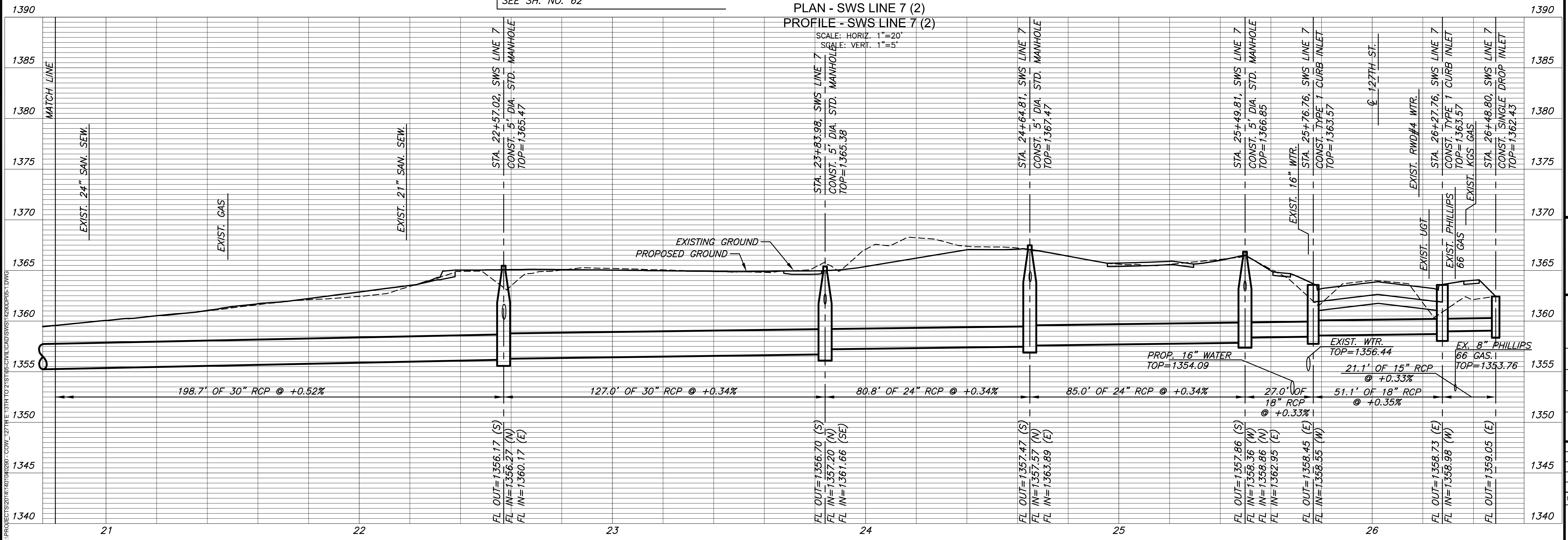
STA. 23+83.98 SWS LINE 7=
STA. 37+63.13 127TH ST., 50.06' RT.
CONST. 5' DIA. STD. MANHOLE
MH TOP=1365.37
REMOVE EXIST. END SECTION AND CONNECT
TO EXIST. 15" RCP (SE) TO MH
SEE SH. NO. 62

STA. 24+64.81 SWS LINE 7=
STA. 38+43.94 127TH ST., 51.83' RT.
CONST. 5' DIA. STD. MANHOLE
MH TOP=1366.47
CONNECT EXIST. 12" PVC (E) TO MH
SEE SH. NO. 62

STA. 25+49.81 SWS LINE 7=
STA. 39+28.94 127TH ST., 51.94' RT.
CONST. 5' DIA. STD. MANHOLE
MH TOP=1366.85
CONNECT EXIST. 12" PVC (E) TO MH
SEE SH. NO. 62

STA. 25+76.76 SWS LINE 7=
STA. 39+34.00 127TH ST., 25.50' RT.
CONST. TYPE 1 CURB INLET
L=10'-0", W=3'-0"
INLET TOP=1363.57
SEE SH. NO. 55

PLAN - SWS LINE 7 (2)
PROFILE - SWS LINE 7 (2)



STREET IMPROVEMENTS FOR
127TH STREET EAST
 FROM 13TH STREET NORTH TO 21ST STREET NORTH

©2017 MKEC Engineering
All Rights Reserved
www.mkec.com
These drawings and their contents, including, but not limited to, all concepts, designs, & ideas are the exclusive property of MKEC Engineering (MKEC), and may not be used or reproduced in any way without the express consent of MKEC.

**STORM SEWER
PLAN & PROFILE
LINE 7 CONT.**

PROJECT NO.	472-85158	
DATE	11/29/17	
SCALE	1"=20'	
DESIGNED	JRA	
DRAWN	WNJ	
CHECKED	JRA	
NO.	REVISION	DATE
SHEET NO.		
27 OF 183		