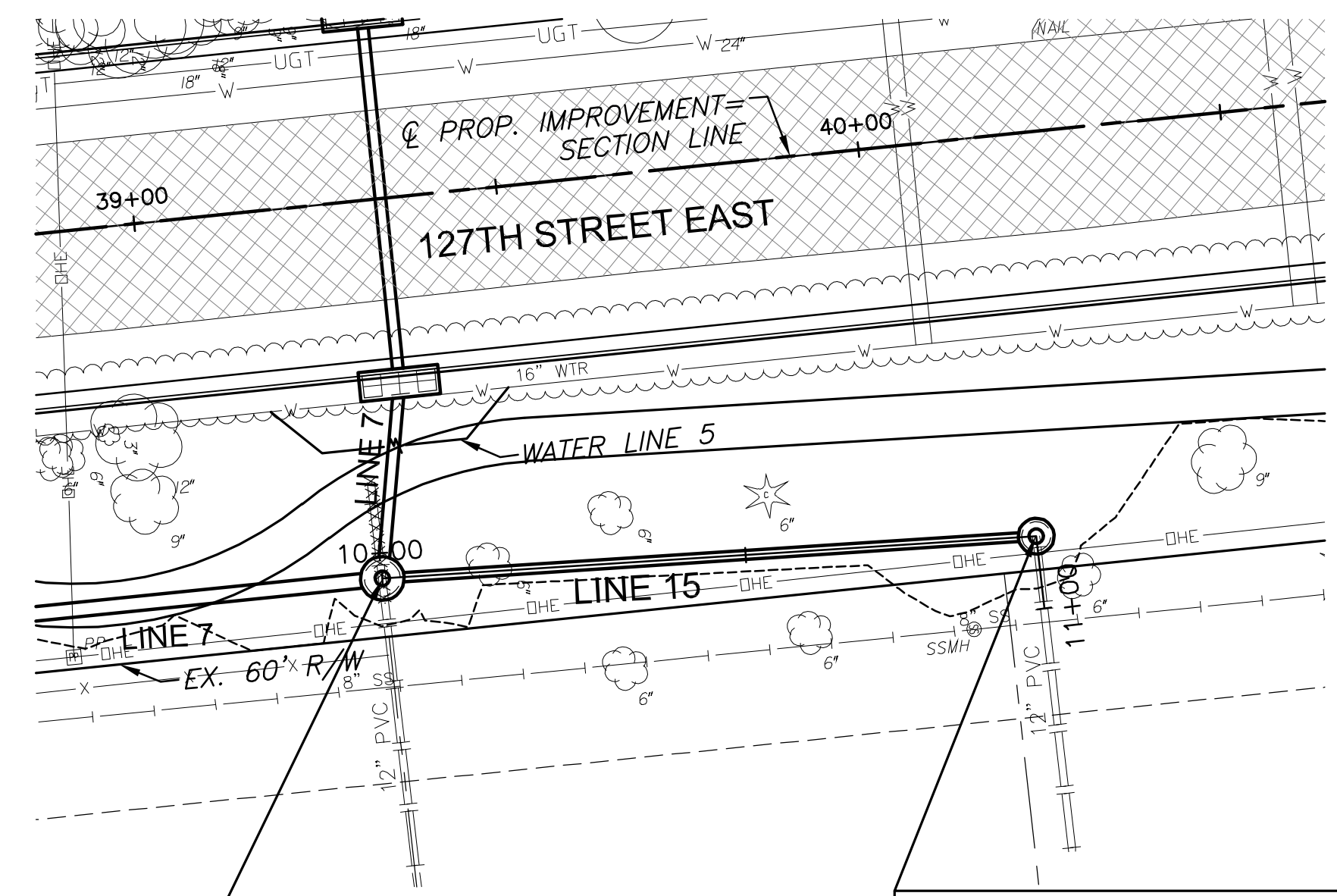


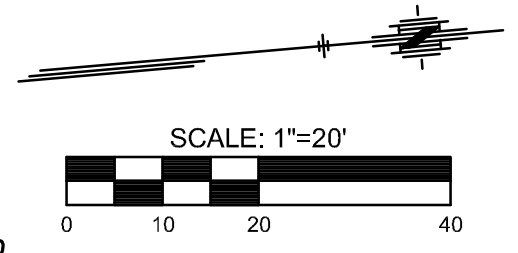
J:\PROJECTS\2017\1401042800 - COM_127TH E - 13TH TO 21ST\105-CIVIL\CAO\SWS\142800PR0.DWG
 PLOTTED: Wednesday, November 29, 2017 @ 02:35PM

STATE	PROJECT NO.	YEAR	SHEET NO.	TOTAL SHEETS
KANSAS	87 N-0615-01	2017	31	183

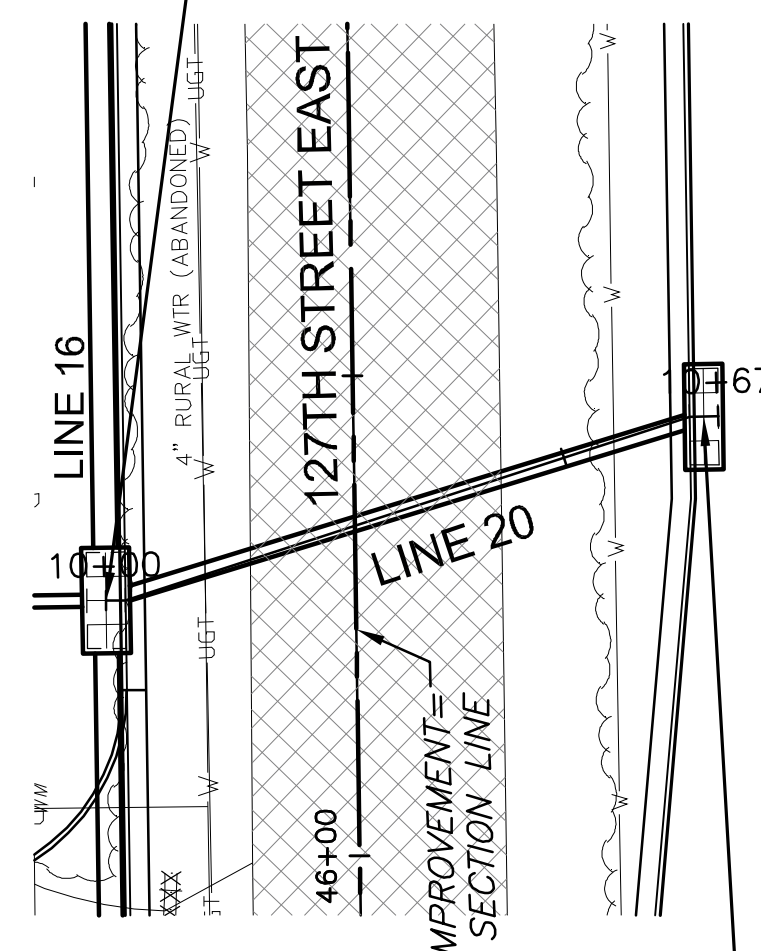


STA. 10+00.00 SWS LINE 15=
 STA. 25+49.81 SWS LINE 7=
 STA. 39+28.94 127TH ST., 51.94' RT.
 MH TOP=1366.85
 SEE SH. NO. 27,62

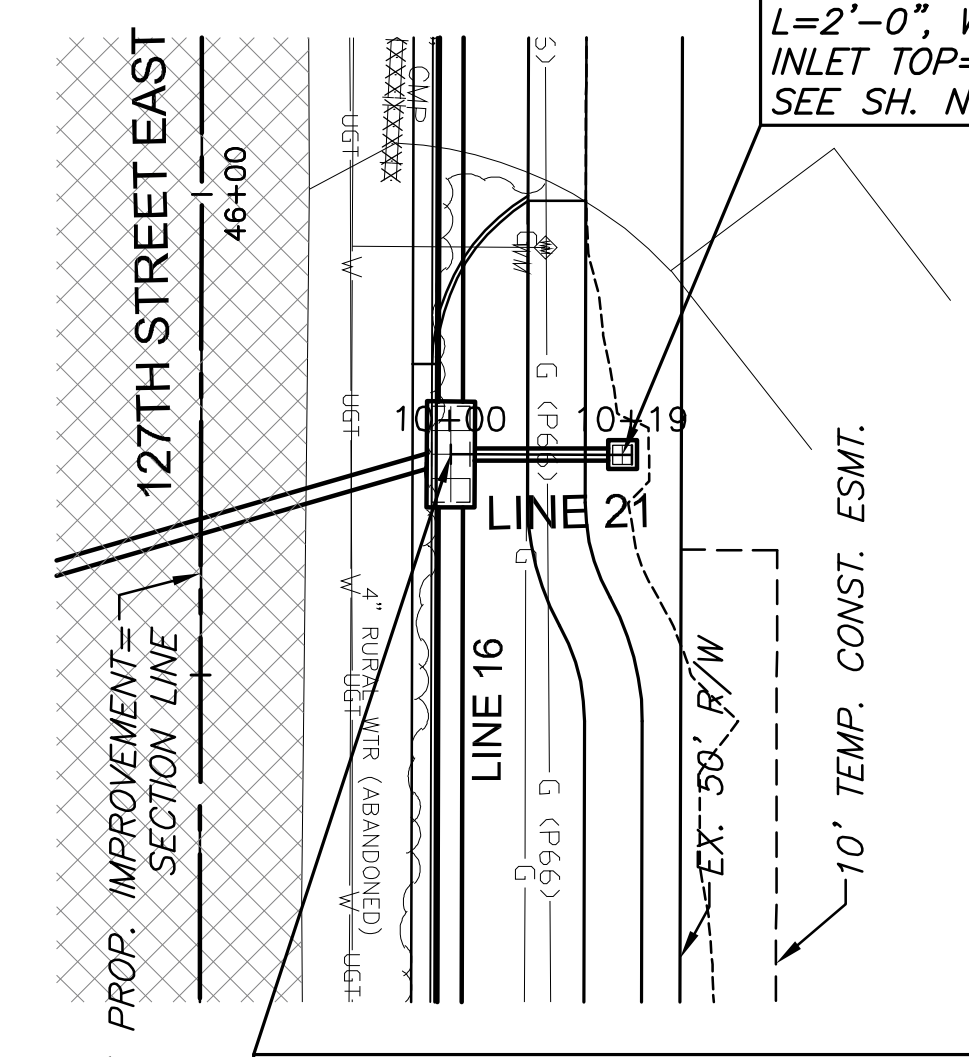
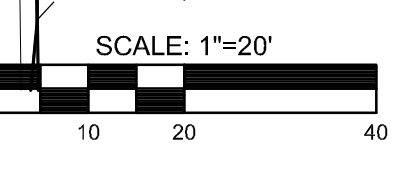
STA. 10+89.98 SWS LINE 15=
 STA. 40+18.86 127TH ST., 55.30' RT.
 CONST. 4' DIA. SHALLOW MANHOLE
 MH TOP=1364.92
 SEE SH. NO. 62



STA. 10+00.00 SWS LINE 20=
 STA. 10+00.00 SWS LINE 21=
 STA. 14+50.16 SWS LINE 16=
 STA. 46+27.00 127TH ST., 26.00' LT.
 INLET TOP=1365.60
 SEE SH. NO. 32,55

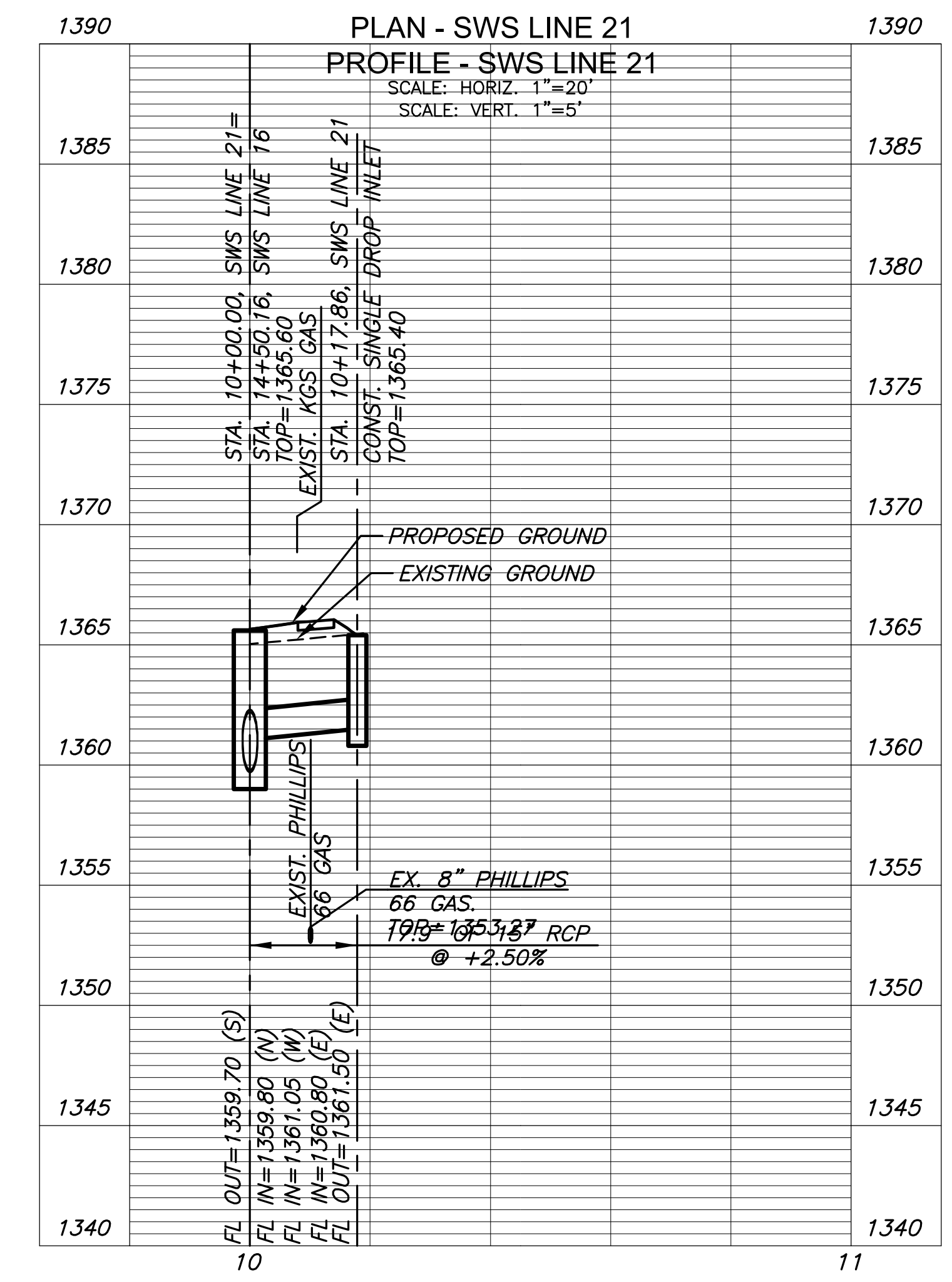
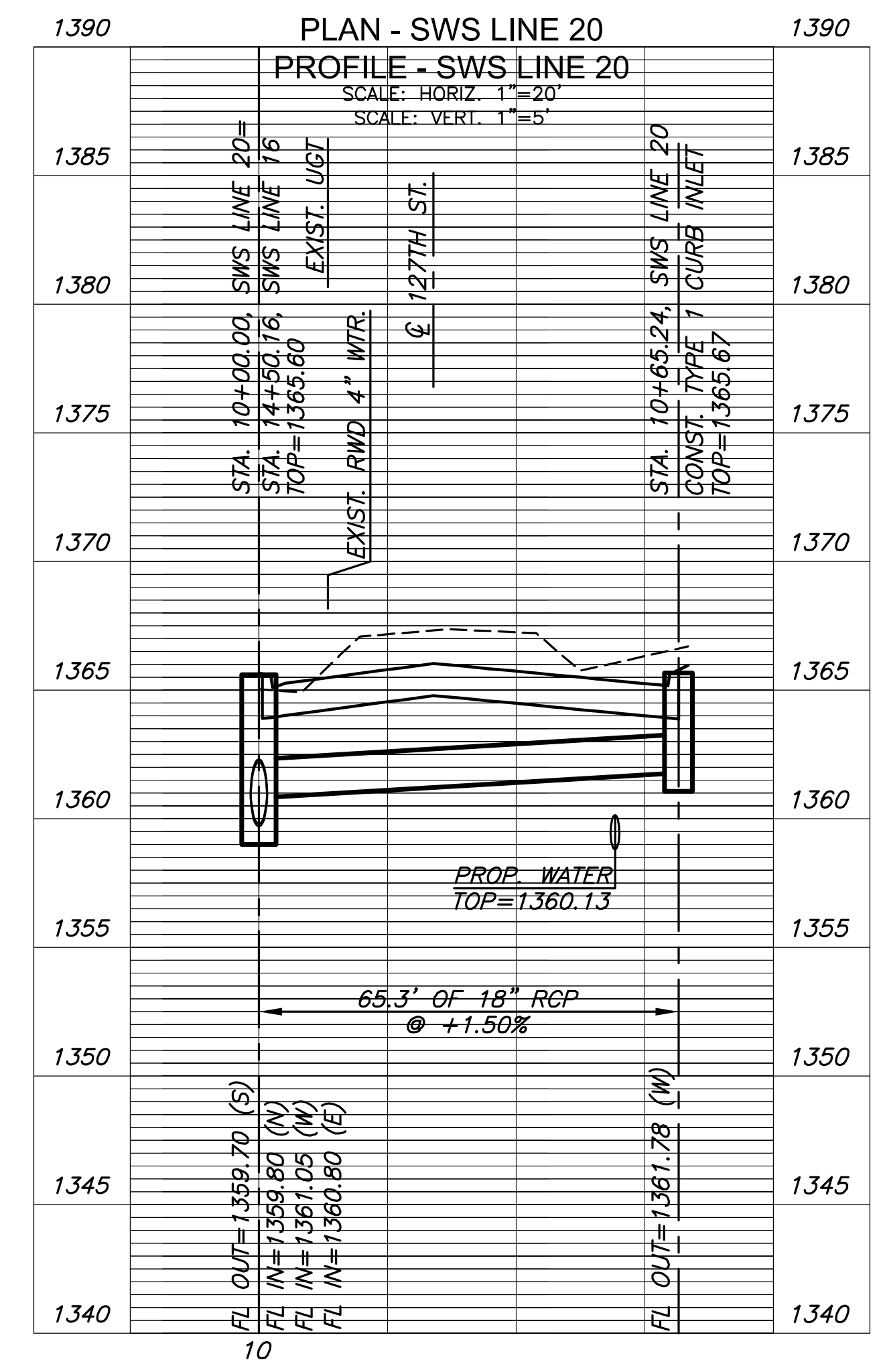
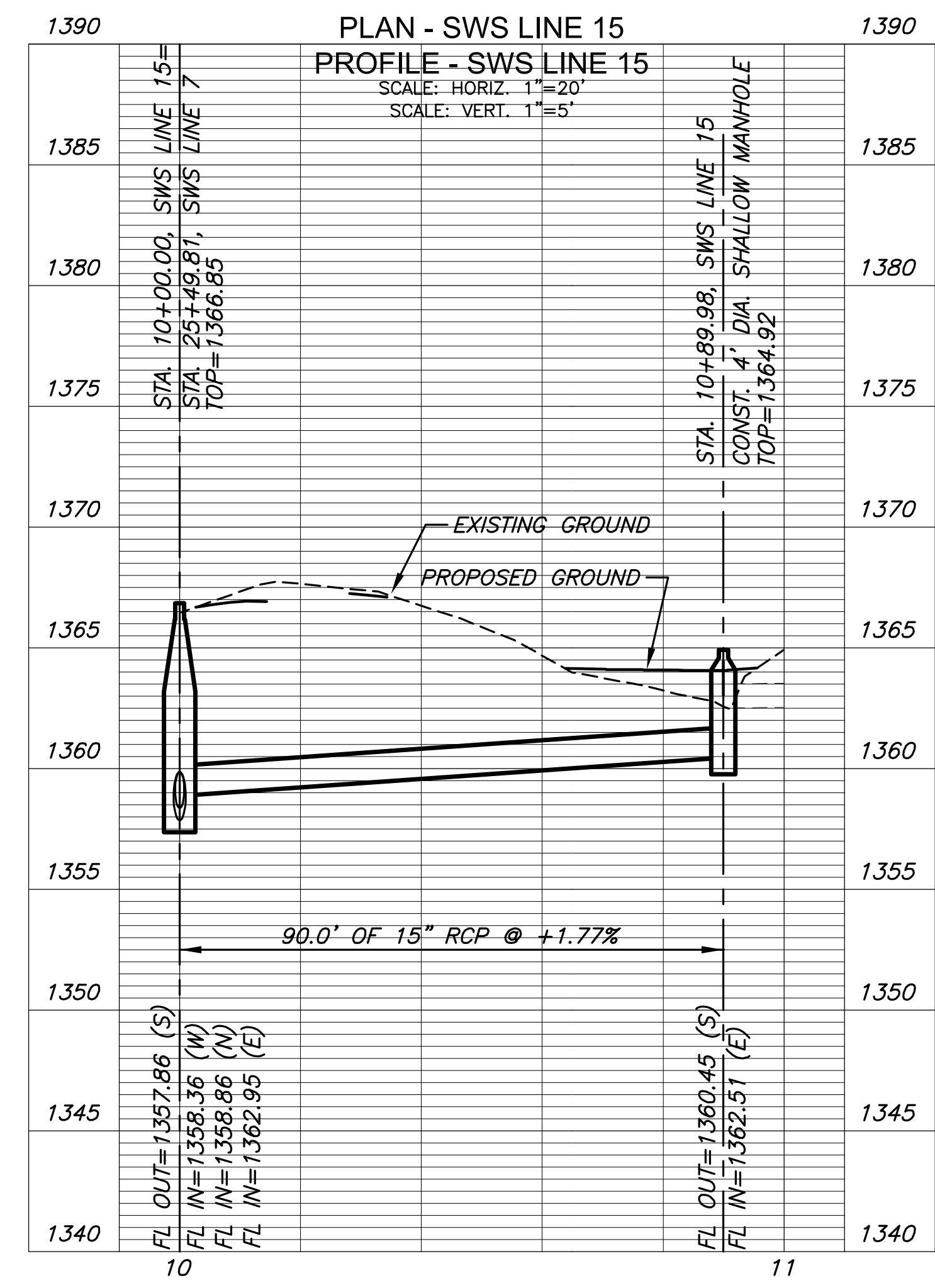
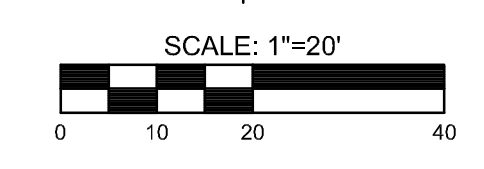


STA. 10+65.24 SWS LINE 20=
 STA. 46+45.20 127TH ST., 36.50' RT.
 CONST. TYPE 1 CURB INLET
 L=10'-0", W=3'-0"
 INLET TOP=1365.67
 SEE SH. NO. 55



STA. 10+17.86 SWS LINE 21=
 STA. 46+27.00 127TH ST., 43.86' LT.
 CONST. SINGLE DROP INLET W/9" APRON
 L=2'-0", W=2'-0"
 INLET TOP=1365.40
 SEE SH. NO. 60

STA. 10+00.00 SWS LINE 21=
 STA. 10+00.00 SWS LINE 20=
 STA. 14+50.16 SWS LINE 16=
 STA. 46+27.00 127TH ST., 26.00' LT.
 INLET TOP=1365.60
 SEE SH. NO. 32,55



STREET IMPROVEMENTS FOR
127TH STREET EAST
 FROM 13TH STREET NORTH TO 21ST STREET NORTH

©2017
 MKEC Engineering
 All Rights Reserved
 www.mkec.com
 These drawings and their contents, including, but not limited to, all concepts, designs, & ideas are the exclusive property of MKEC Engineering (MKEC), and may not be used or reproduced in any way without the express consent of MKEC.

"STORM SEWER PLAN & PROFILE LINES 15, 20 & 21"

PROJECT NO.	472-85158	
DATE	11/29/17	
SCALE	1"=20'	
DESIGNED	JRA	
DRAWN	WNJ	
CHECKED	JRA	
NO.	REVISION	DATE

SHEET NO. 31 OF 183