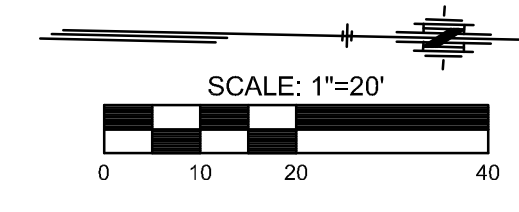
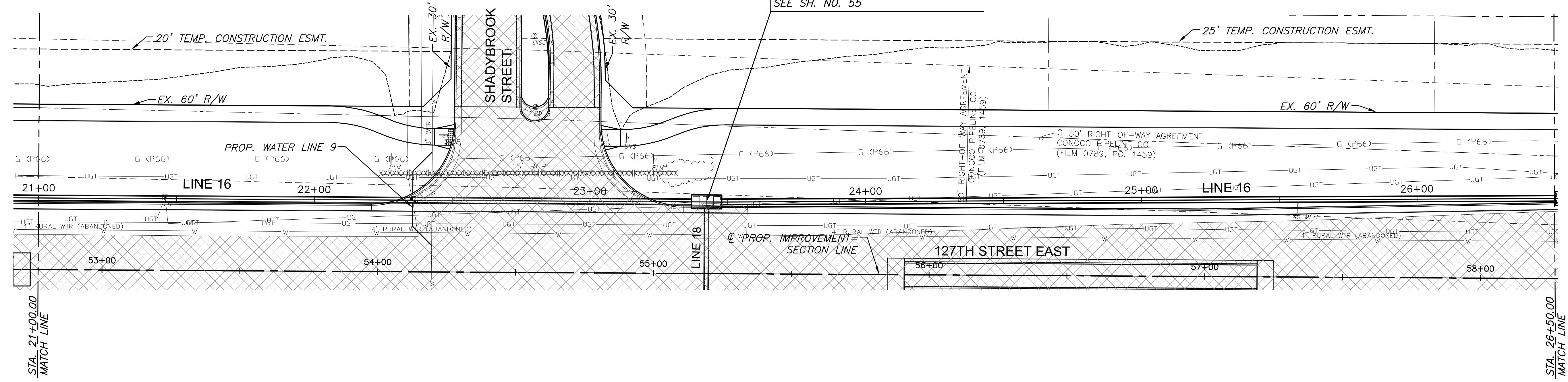


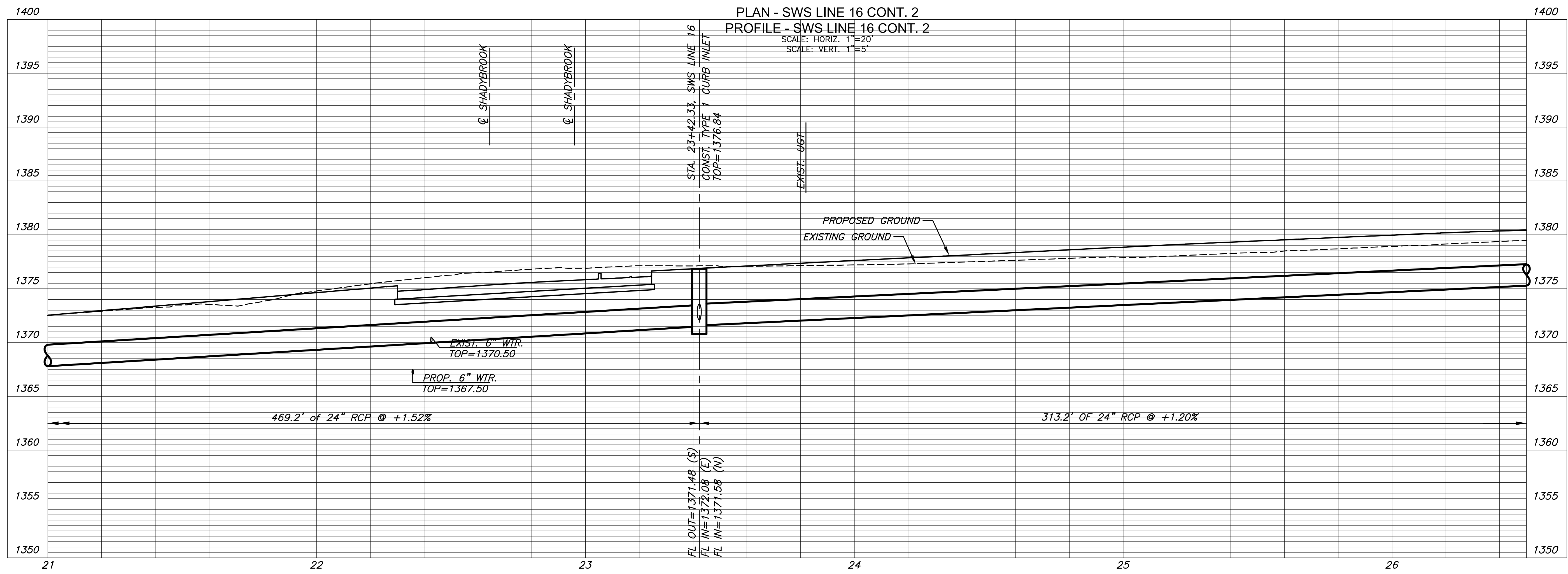
STATE	PROJECT NO.	YEAR	SHEET NO.	TOTAL SHEETS
KANSAS	87 N-0615-01	2017	34	183



STA. 23+42.33 SWS LINE 16=
 STA. 55+19.17 127TH ST., 26.00' LT.
 CONST. TYPE 1 CURB INLET
 L=10'-0", W=4'-0"
 INLET TOP=1376.84
 SEE SH. NO. 55



PLAN - SWS LINE 16 CONT. 2
 PROFILE - SWS LINE 16 CONT. 2
 SCALE: HORIZ. 1"=20'
 SCALE: VERT. 1"=5'



STREET IMPROVEMENTS FOR
127TH STREET EAST
 FROM 13TH STREET NORTH TO 21ST STREET NORTH

©2017
 MKEC Engineering
 All Rights Reserved
 www.mkec.com
 These drawings and their contents, including, but not limited to, all concepts, designs, & ideas are the exclusive property of MKEC Engineering (MKEC), and may not be used or reproduced in any way without the express consent of MKEC.

**STORM SEWER
 PLAN & PROFILE
 LINE 16 CONT. 2**

PROJECT NO.	472-85158	
DATE	11/29/17	
SCALE	1"=20'	
DESIGNED	DRAWN	CHECKED
JRA	WNJ	JRA

NO.	REVISION	DATE

SHEET NO.

PLOTTED: Wednesday, November 29, 2017 @ 02:39PM
 J:\PROJECTS\2017\1401040280 - COM_127TH E. 13TH TO 21ST\05-CIVIL\CAO\SWS\14290DP13.DWG