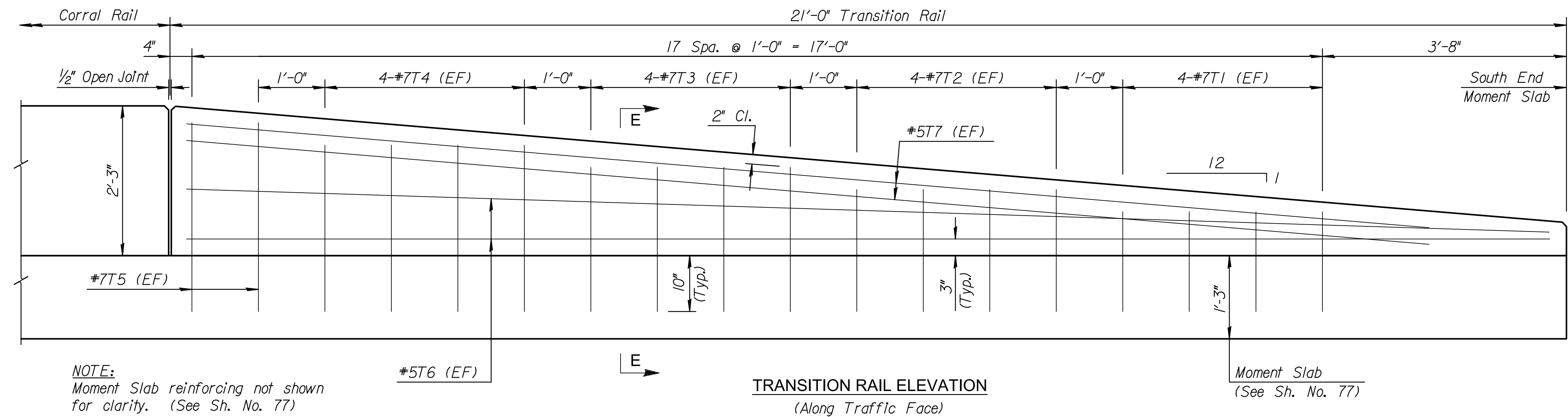


STATE	PROJECT NO.	YEAR	SHEET NO.	SHEETS
KANSAS	87 N-0615-01	2017	79	183



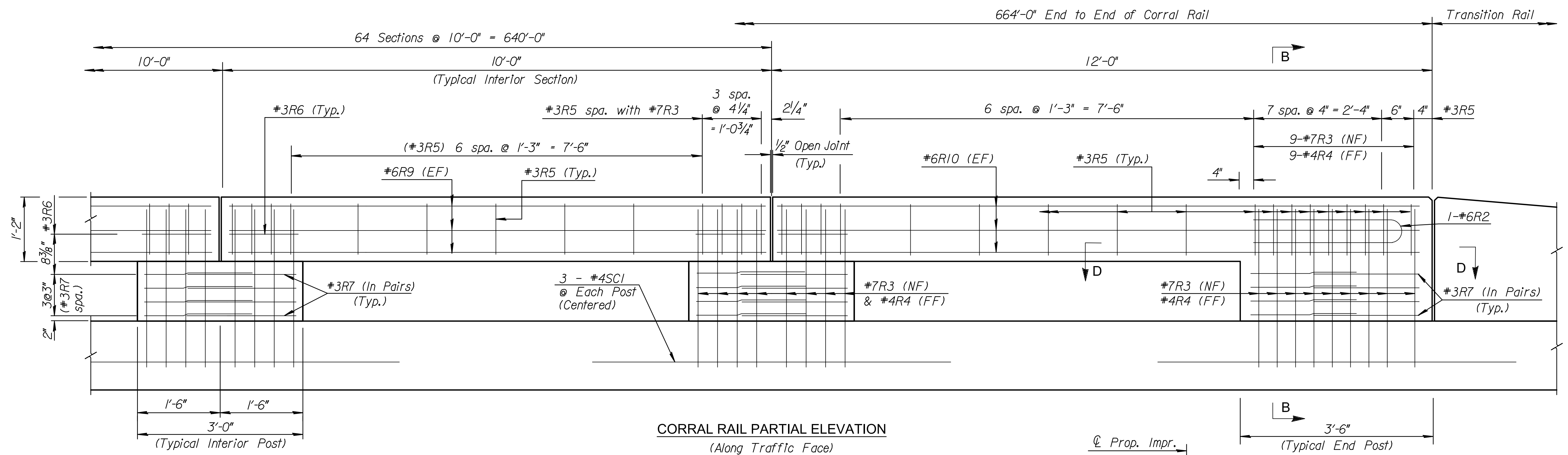
**GENERAL NOTES**

- UNIT STRESSES:**  
Concrete  $f'_c = 4 \text{ ksi}$   
Reinforcing Steel (Epoxy-Coated)  $f_y = 60 \text{ ksi}$
- The Transition Rail and Corral Rail shall be constructed such that the Traffic Face of the Rail is 24'-0" from the  $\phi$  Proposed Improvements.
  - See Sh. No. 93 for additional sections not shown on this sheet. See Sh. No. 94 for bar bending diagrams not shown on this sheet.
  - Quantities shown on this sheet are provided for information only.
  - All materials, labor, and equipment required for the construction of Corral Rail and Transition Rail shall be considered *subsidiary* to the bid item "Concrete Safety Barrier".

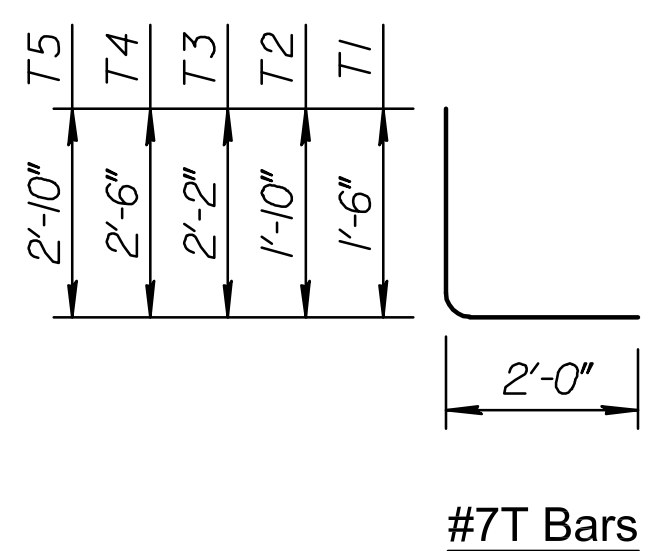


**NOTE:**  
Moment Slab reinforcing not shown for clarity. (See Sh. No. 77)

**TRANSITION RAIL ELEVATION**  
(Along Traffic Face)



**CORRAL RAIL PARTIAL ELEVATION**  
(Along Traffic Face)

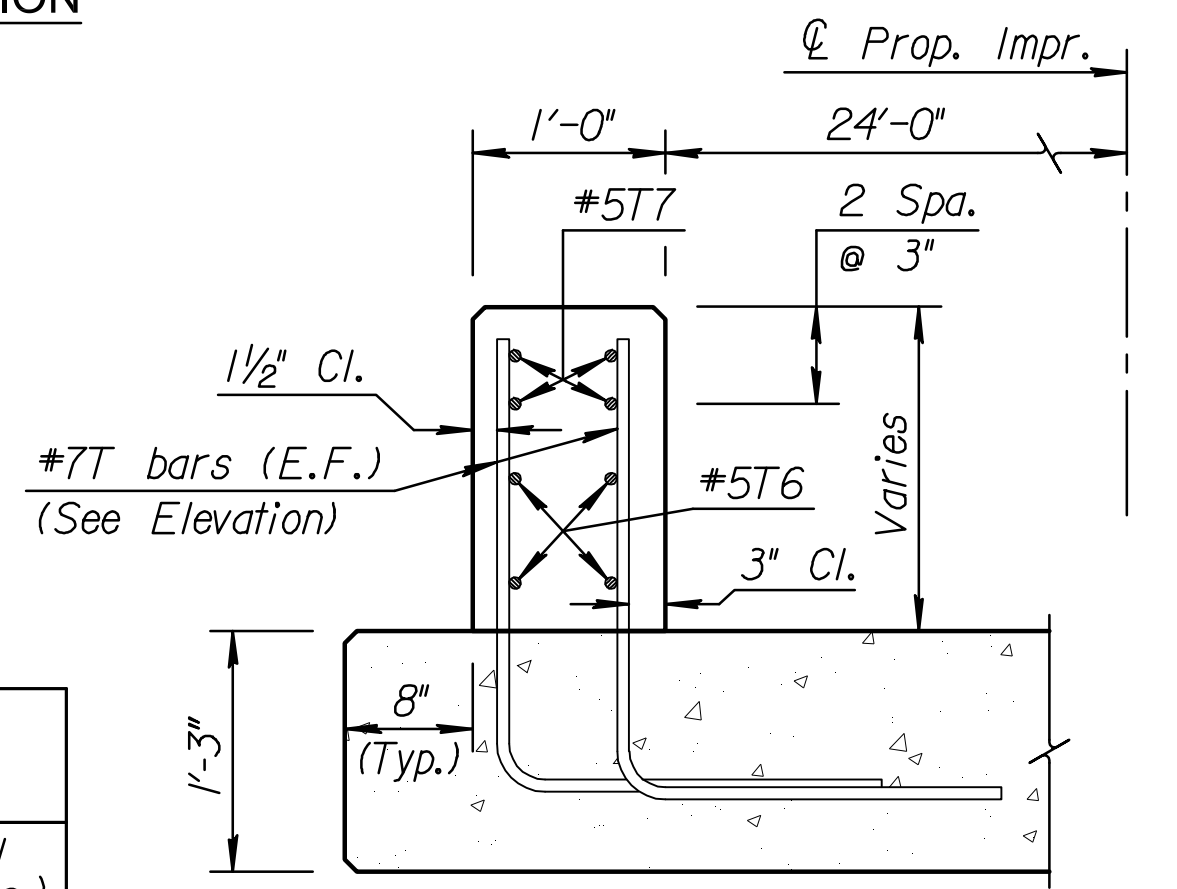


BILL OF REINFORCING STEEL (Grade 60, Epoxy-Coated)									
Straight Bars					Bent Bars				
Corral Rail	R9	#6	384	9'-8"	R3	#7	538	6'-11"	
	R10	#6	12	11'-8"	R2	#6	2	5'-8"	
	SC1	#4	201	6'-6"	R4	#4	538	3'-5"	
					R5	#3	868	3'-6"	
					R6	#3	130	4'-6"	
					R7	#3	536	4'-6"	
Transition Rail	T6	#5	4	20'-6"	T1	#7	8	3'-6"	
	T7	#5	4	18'-9"	T2	#7	8	3'-10"	
					T3	#7	8	4'-2"	
					T4	#7	8	4'-6"	
					T5	#7	4	4'-10"	

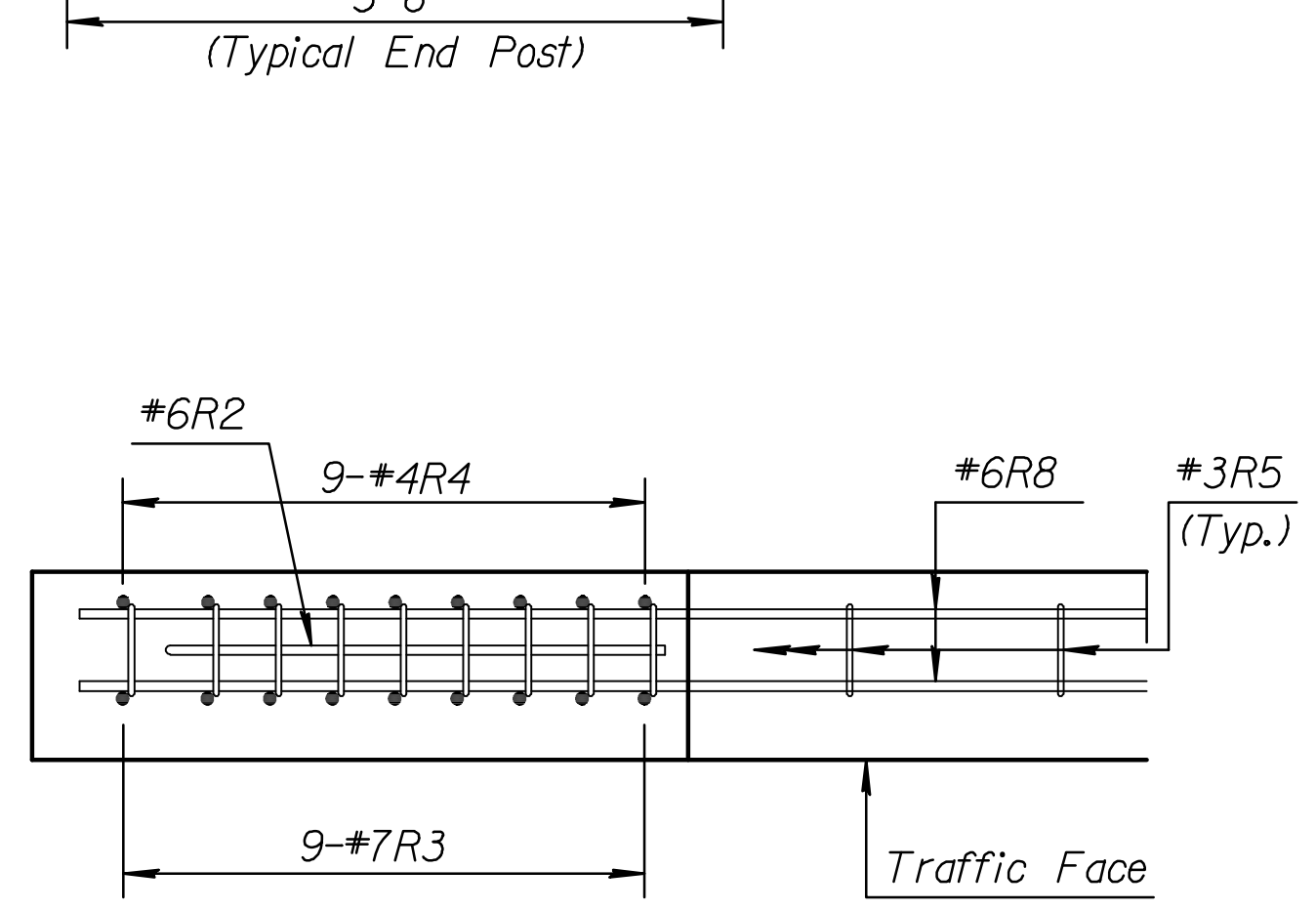
**LEGEND**

NF = Near Face  
FF = Far Face  
EF = Each Face

CORRAL RAIL QUANTITIES (Provided For Information Only)		
Location	Concrete (Cu. Yds.)	Reinforcing Steel (Epoxy-Coated)(Lbs.)
Corral Rail	36.6	19,010



**SECTION E-E**



**SECTION D-D**

**STREET IMPROVEMENTS FOR**  
**127TH STREET EAST**  
 FROM 13TH STREET NORTH TO 21ST STREET NORTH

©2017 MKEC Engineering All Rights Reserved  
 These drawings and their contents, including but not limited to, all concepts, designs, & ideas are the exclusive property of MKEC Engineering (MKEC), and may not be used or reproduced in any way without the express consent of MKEC.

**TRANSITION RAIL AND CORRAL RAIL DETAILS**

PROJECT NO.	472-85158	
DATE	11/29/17	
SCALE	NTS	
DESIGNED	DRAWN	CHECKED
KJS	DMU	KJS
NO.	REVISION	DATE
SHEET NO.	79 OF 183	