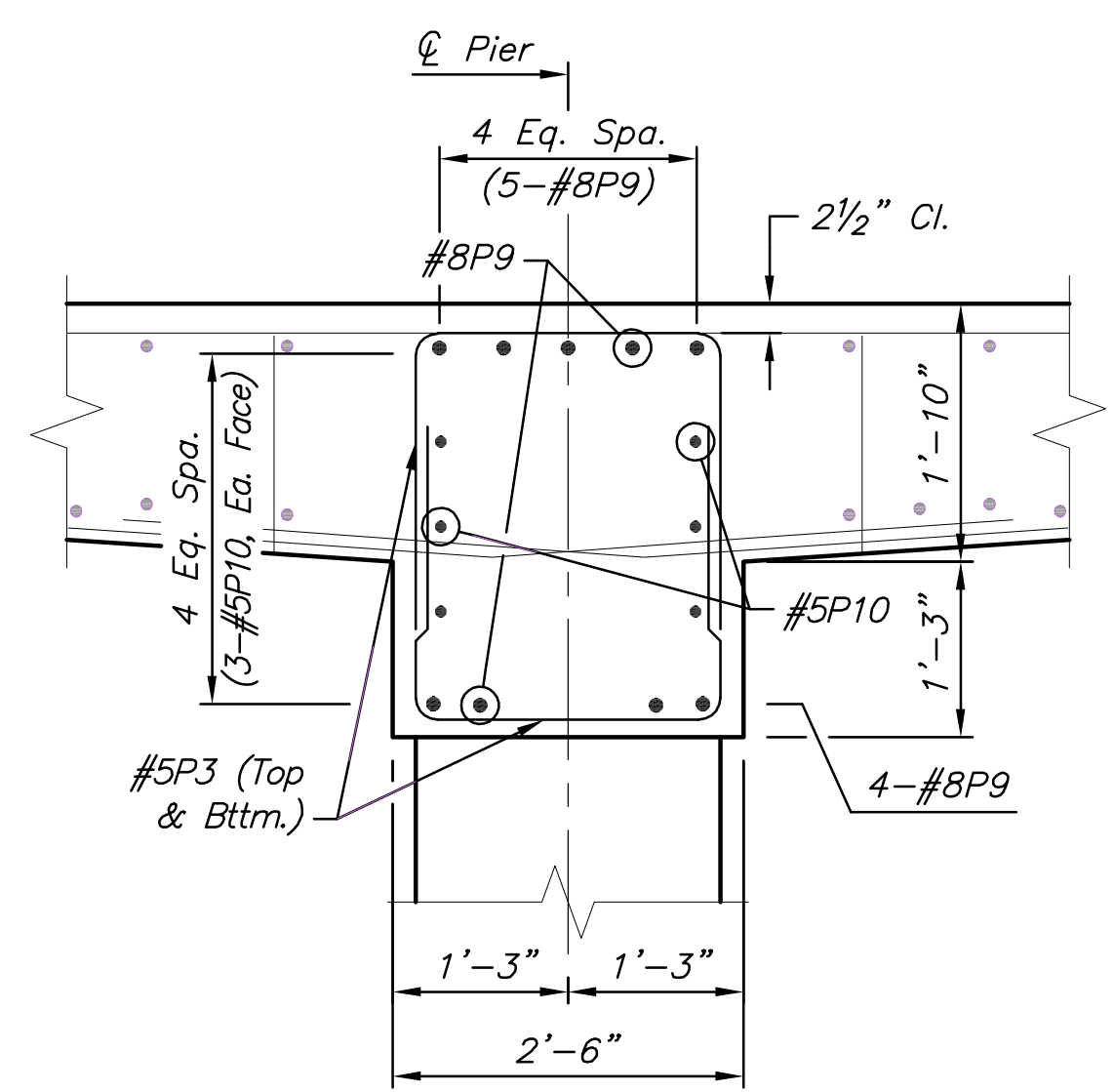
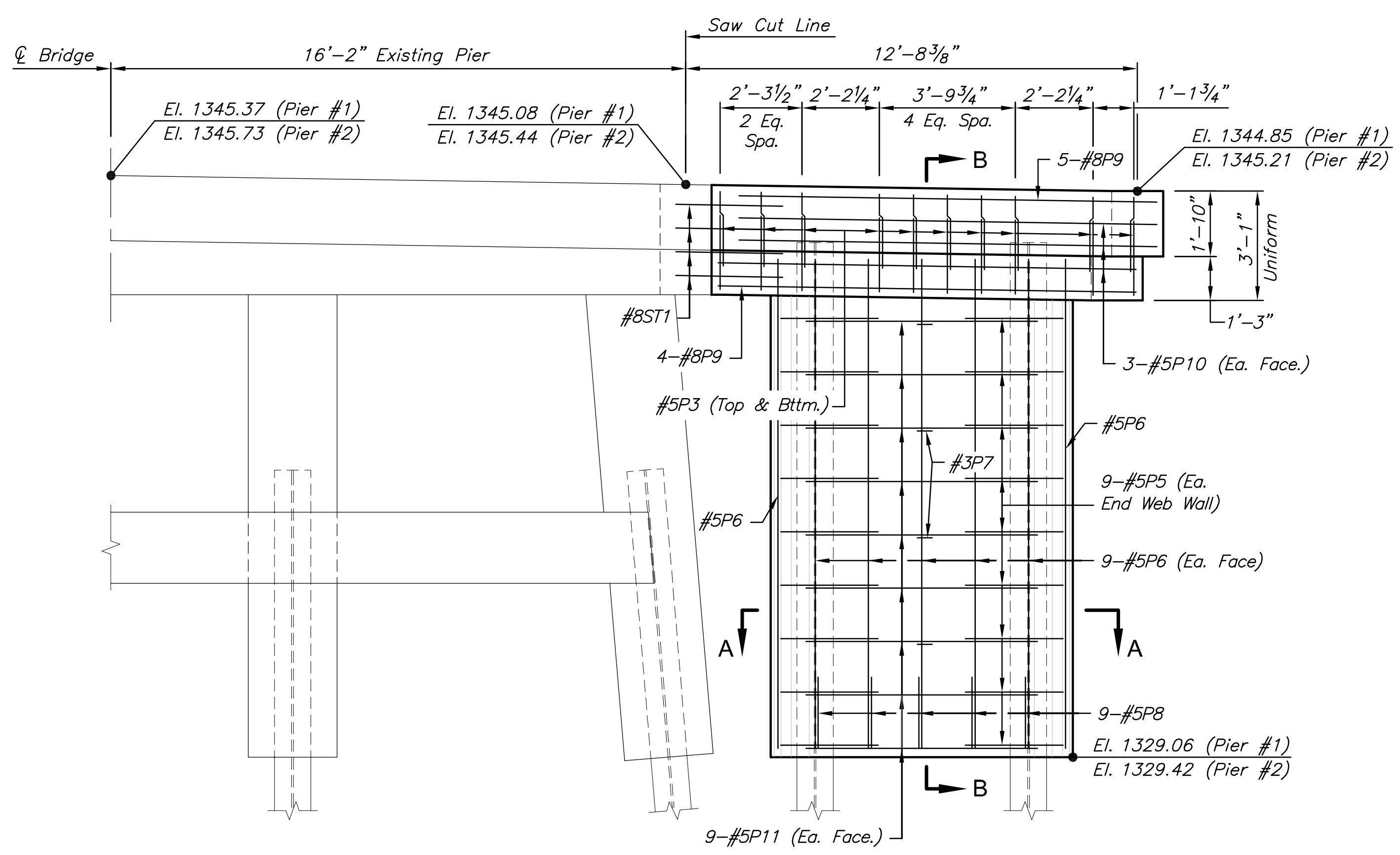


PLAN - PIER EXTENSION
* Measured perpendicular to \varnothing Bridge

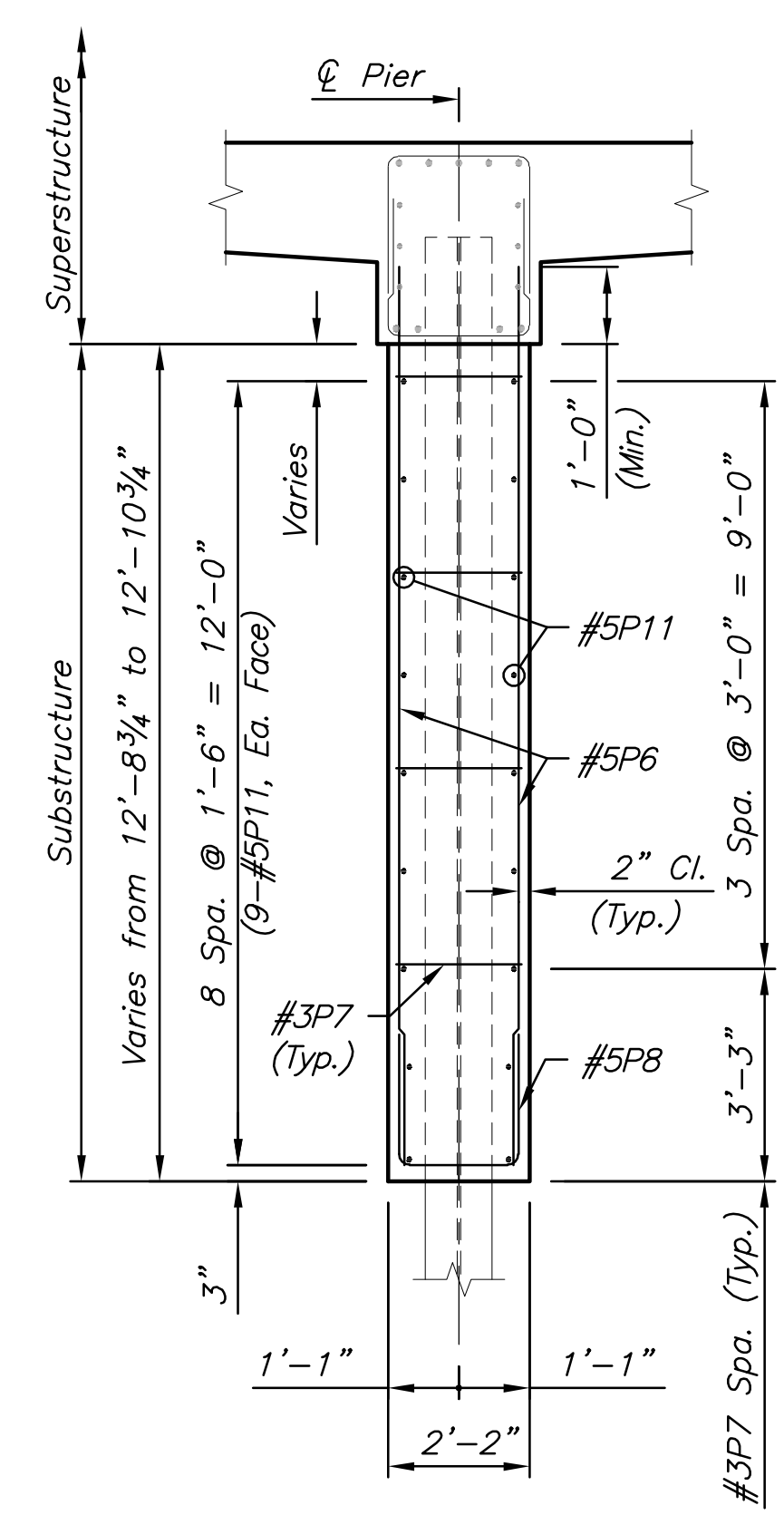


TYPICAL SECTION - PIER BEAM
Shown Perpendicular to \varnothing Pier

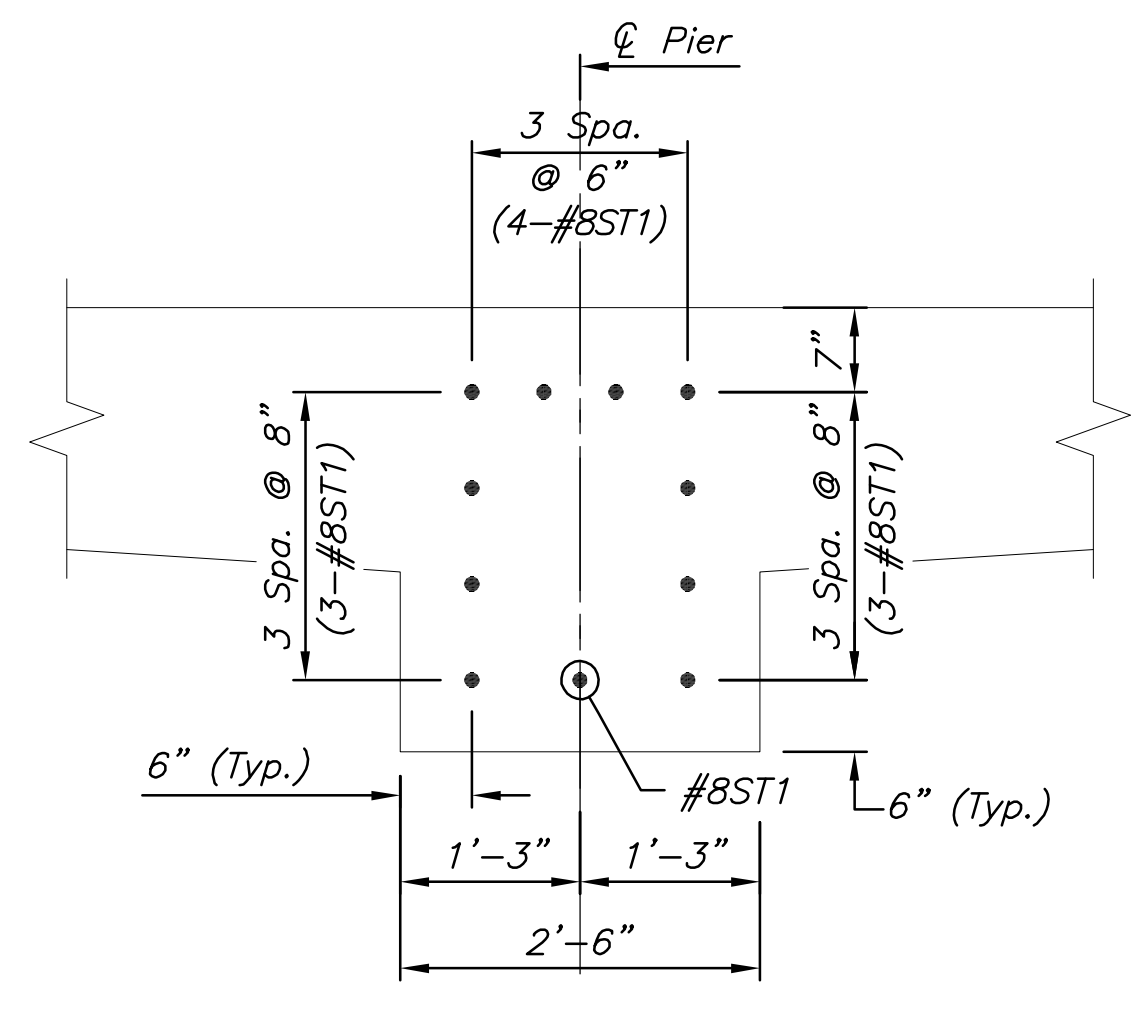


ELEVATION - PIER EXTENSION

Dimensioned along \varnothing Pier (Looking Forward Station)
(Pier Beam reinforcing is shown normal to South face)



SECTION B-B

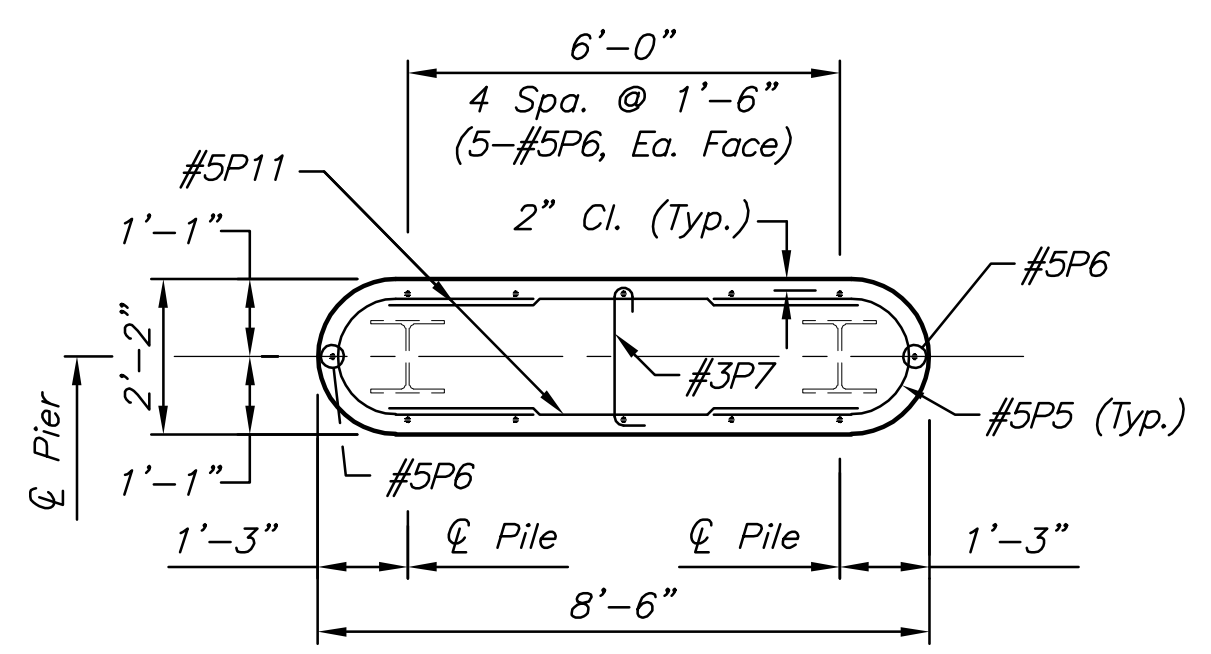


EXISTING PIER BEAM END ELEVATION
Shown Perpendicular to \varnothing Pier

NOTE:
Drill and Epoxy all ST1 bars as shown into existing pier concrete (12" Min. Embed.)

Epoxy Resin shall be selected from Kansas Department of Transportation Prequalified Materials List, PQL-10.5 "Epoxy-Resin-Base Bonding Systems for Concrete".

All materials, labor, and equipment necessary for this work shall be considered subsidiary to the bid item "Reinforcing Steel".



SECTION A-A

| SUBSTRUCTURE CONCRETE | |
|---------------------------|--------------|
| Concrete (Grade 4.0) (AE) | |
| Location | Quantity |
| Pier No. 1 | 8.3 Cu. Yds. |
| Pier No. 2 | 8.3 Cu. Yds. |

©2017 MKEC Engineering All Rights Reserved www.mkec.com
These drawings and their contents, including, but not limited to, all concepts, designs, & ideas are the exclusive property of MKEC Engineering (MKEC), and may not be used or reproduced in any way without the express consent of MKEC.

**PHASE 3
PIER EXT.
DETAILS**

| | | |
|-------------|-----------|---------|
| PROJECT NO. | 472-85158 | |
| DATE | 11/29/17 | |
| SCALE | 3/8"=1' | |
| DESIGNED | DRAWN | CHECKED |
| KJS | DMU | KJS |
| NO. | REVISION | DATE |