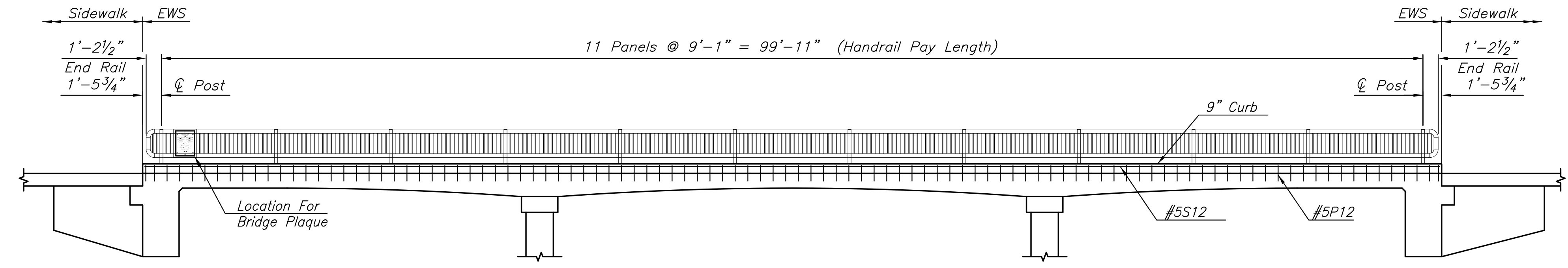


PLOTTED: Wednesday, November 29, 2017 @ 04:55PM
 J:\PROJECTS\2017\140104290-COM-127THE 13TH TO 21ST STS-CIVIL\CA\PAV14290E07.DWG

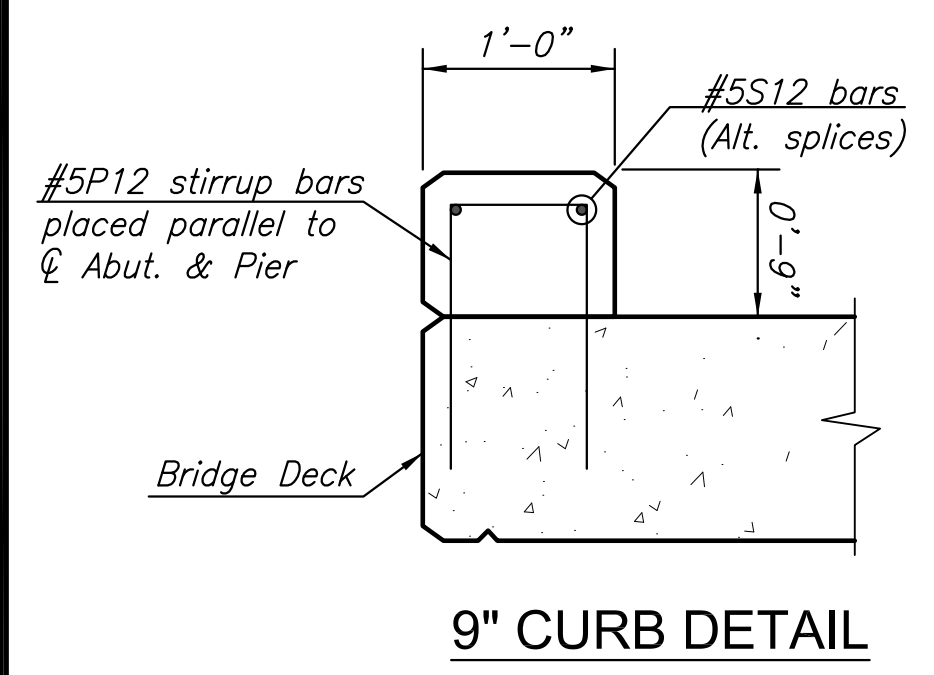
STATE	PROJECT NO.	YEAR	SHEET NO.	TOTAL SHEETS
KANSAS	87 N-0615-01	2017	96	183



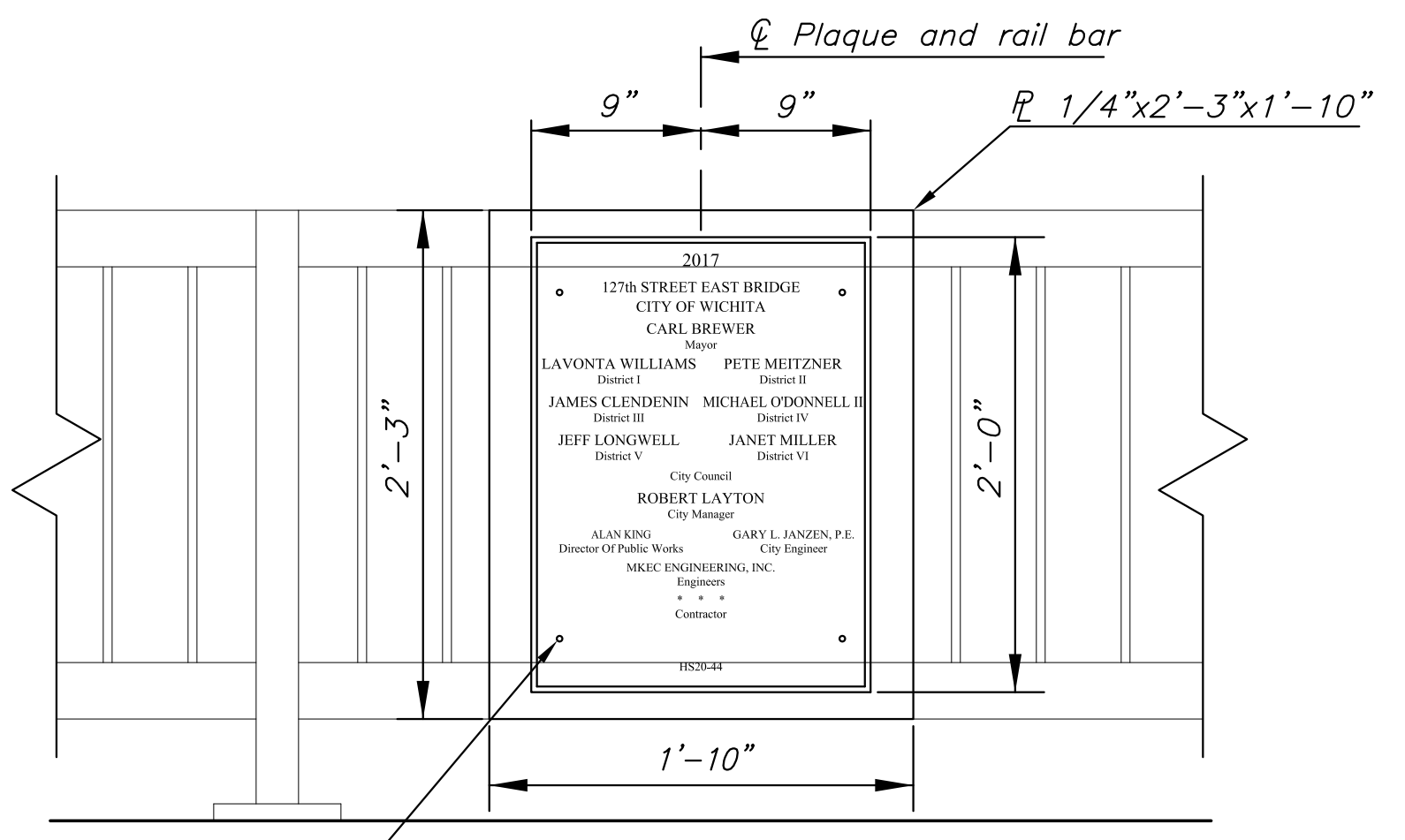
ELEVATION - HANDRAIL, PEDESTRIAN
 (Shown and Dimensioned along Walkway Face of Handrail)
 (West Edge Bridge Deck - Phase 2)

HANDRAIL NOTES

- The rail members shall conform to ASTM Designation A36 or equivalent.
- Rail shall be fabricated in lengths to include a minimum of two and a maximum of three panels. Posts shall be set vertical. Shims may be used between concrete and base plates of posts.
- All parts of handrail shall be painted. The primer coat shall conform to the inorganic zinc system. Surface preparation shall be in accordance with that for structural steel. The finish coat shall be in accordance with water-borne acrylic finish coat.
- The Contractor shall submit color chart for approval by the City. The color shall be "black (carboline C900)".
- All materials, equipment and labor necessary for the installation of the handrail shall be subsidiary to the bid item.

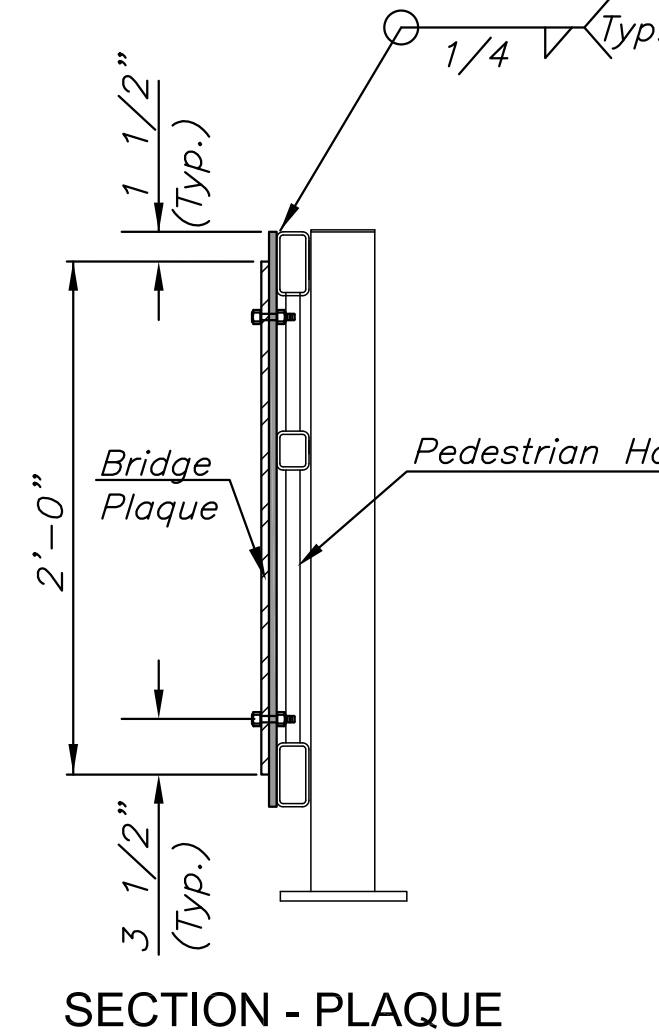


9" CURB DETAIL

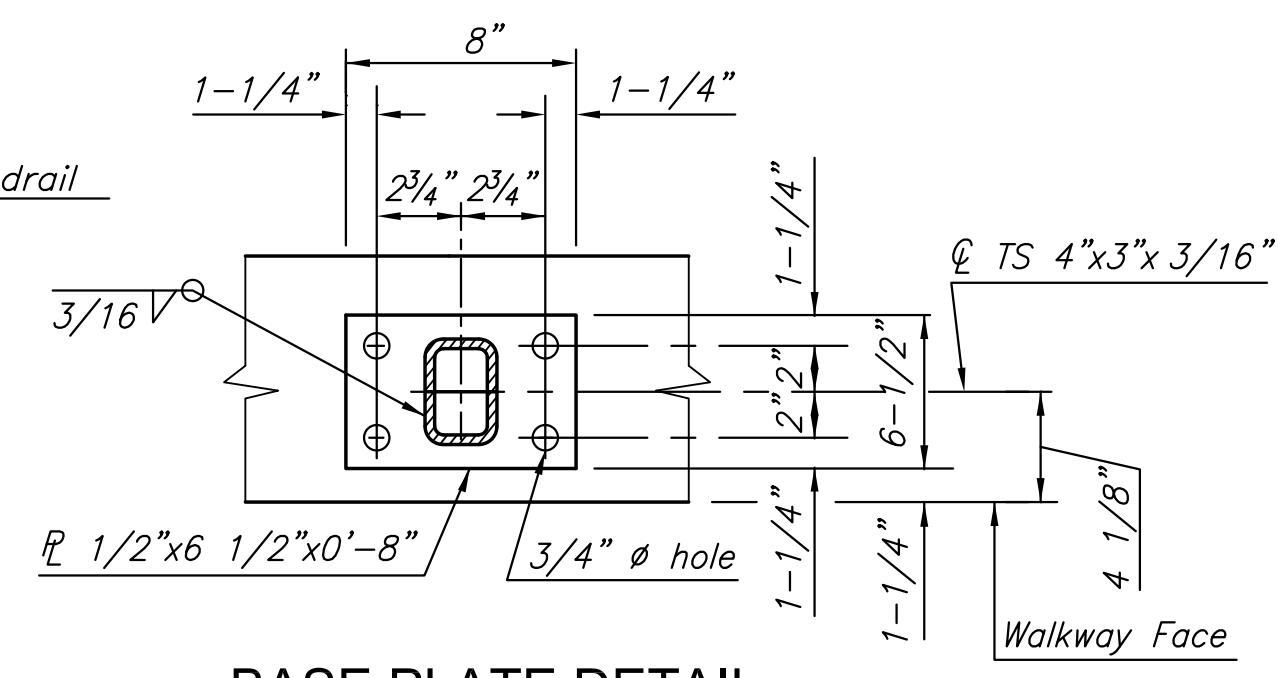


ELEVATION - PLAQUE
PLAQUE MOUNTING ON HANDRAIL (PEDESTRIAN)

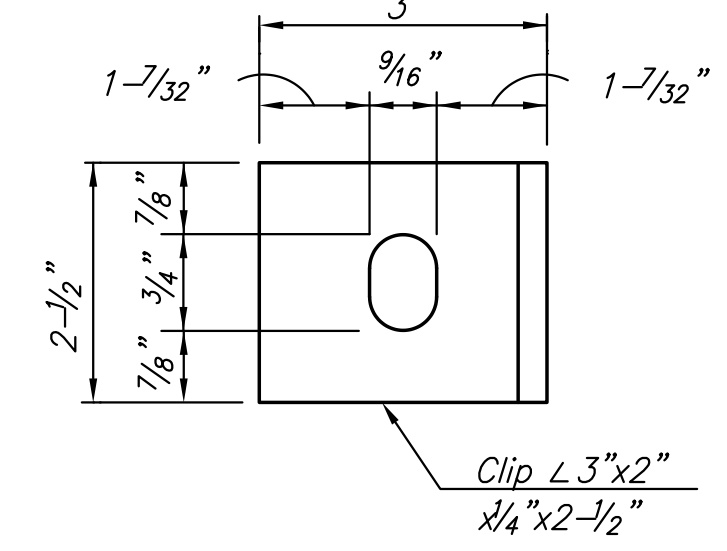
SS 1/2" Ø SS round headed cap screw w/SS washer & nut threads, peen threads to prevent removal (Typ. 4 places).



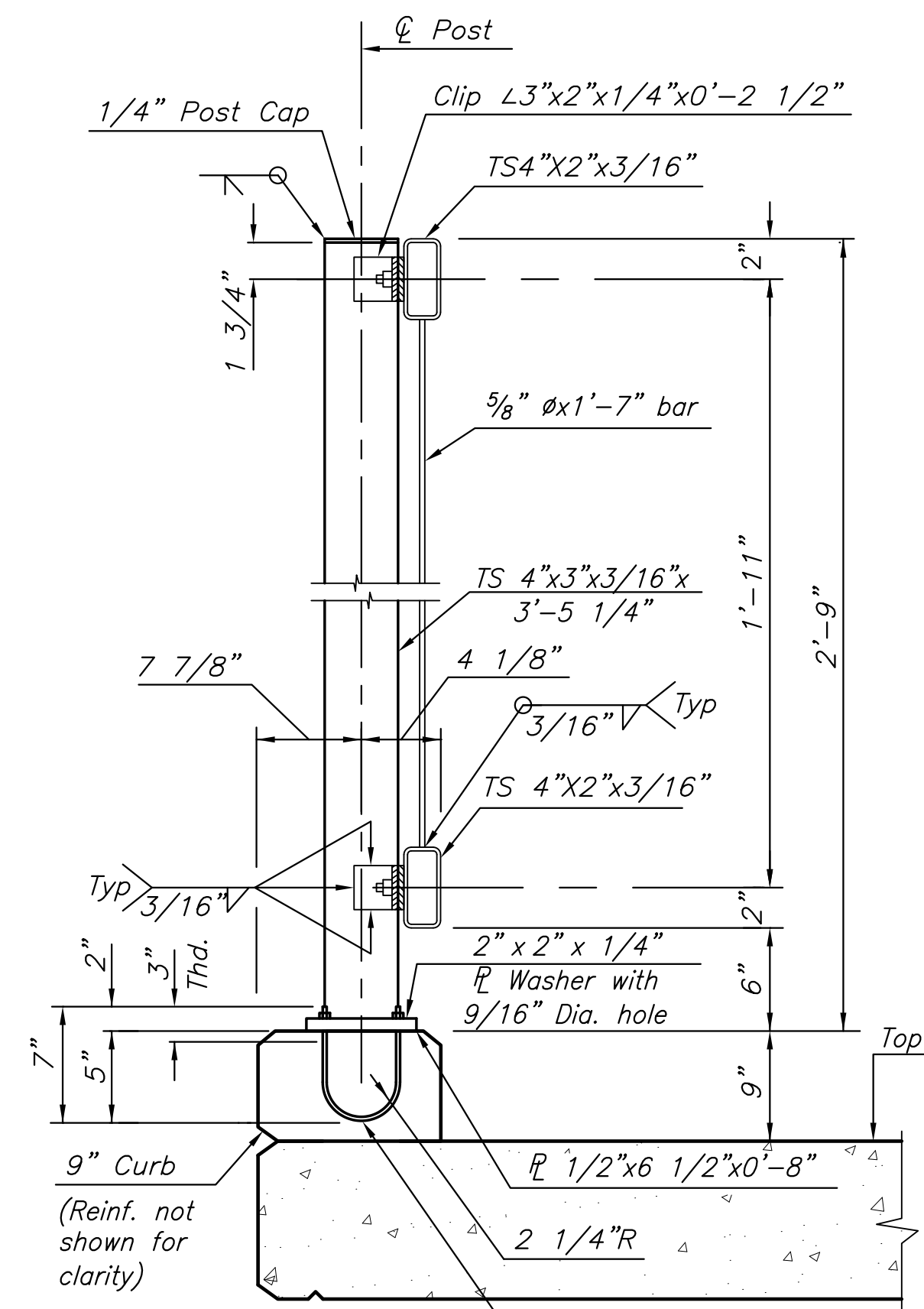
SECTION - PLAQUE



BASE PLATE DETAIL

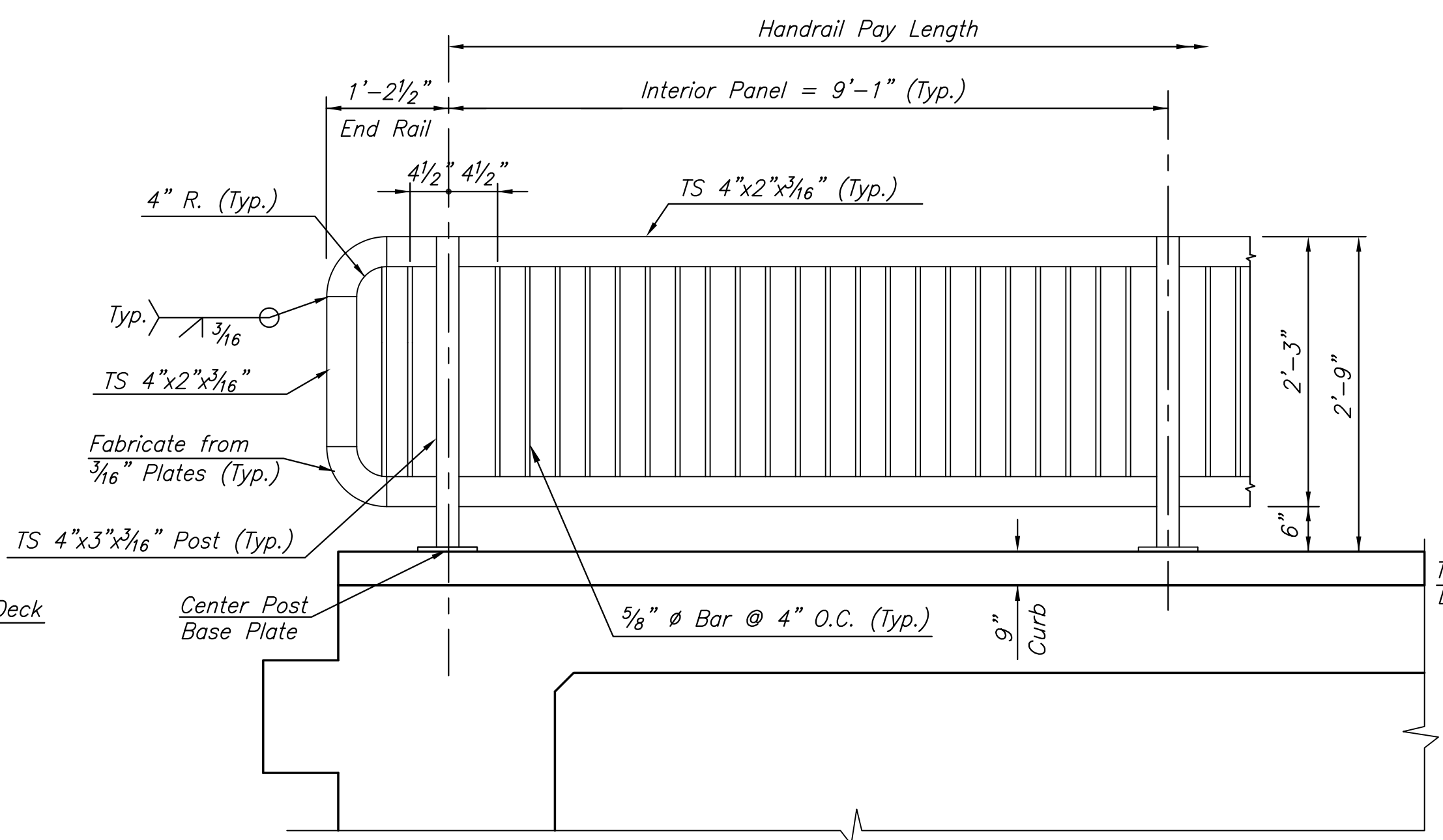


CLIP DETAIL

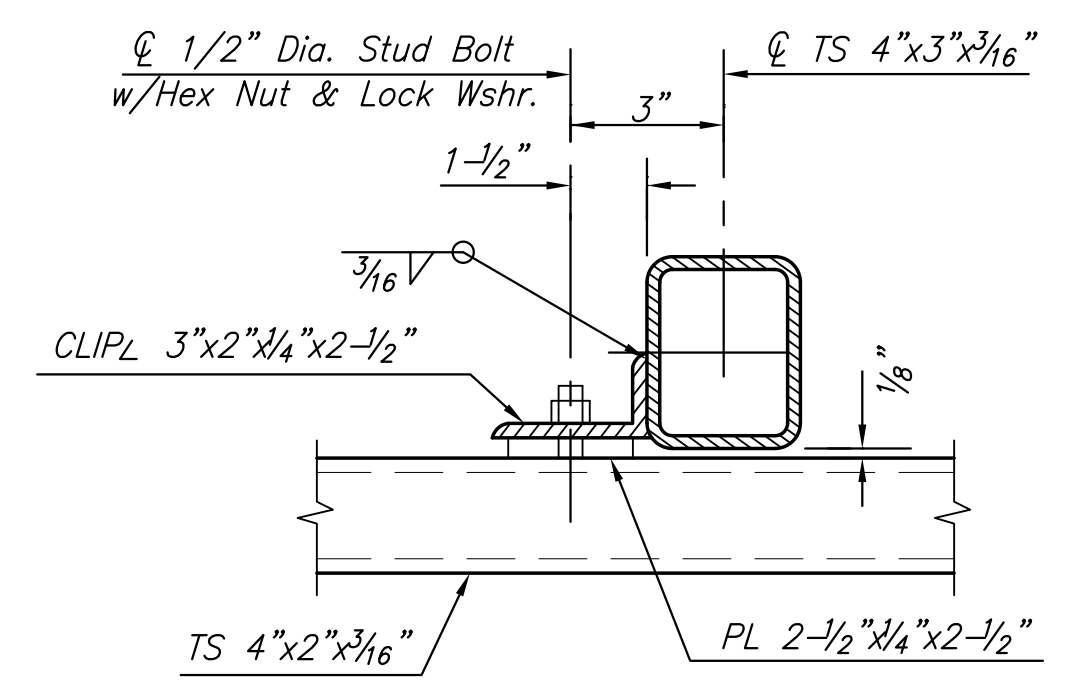


TYPICAL RAIL SECTION
 NO SCALE

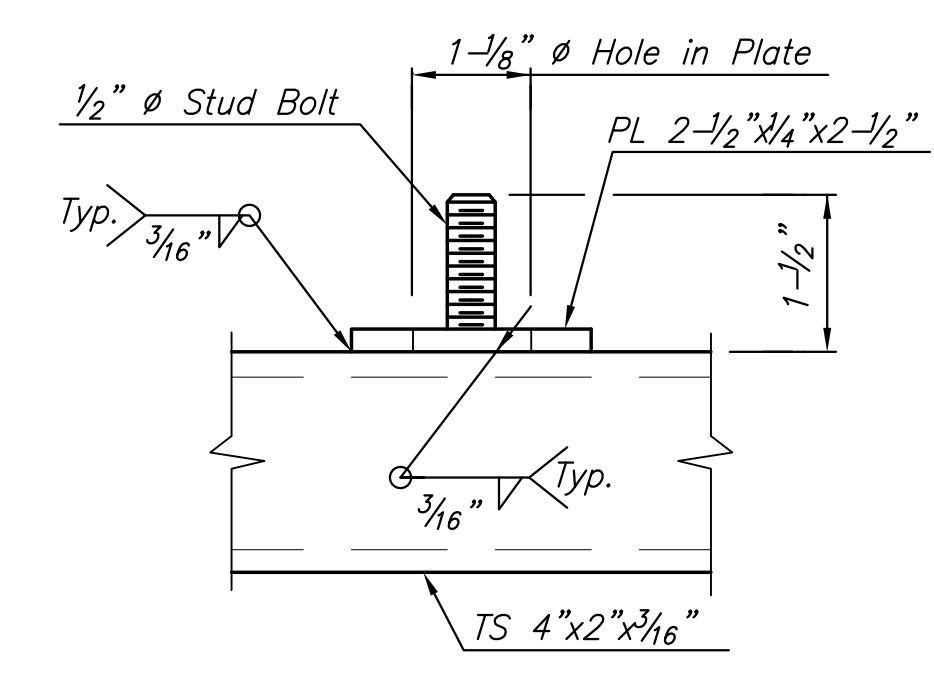
1/2" Ø U-bolts w/Hex Nuts, PL Wshrs & Lock Washers (Drill and epoxy grout 5/8" Ø Anchor bolts in Bridge Deck in lieu of u-bolts) (All galv.) (Use HILTI HIT HY 200 Adhesive Anchors & HIT-Z anchor rods with 3-3/4" min. embed.)



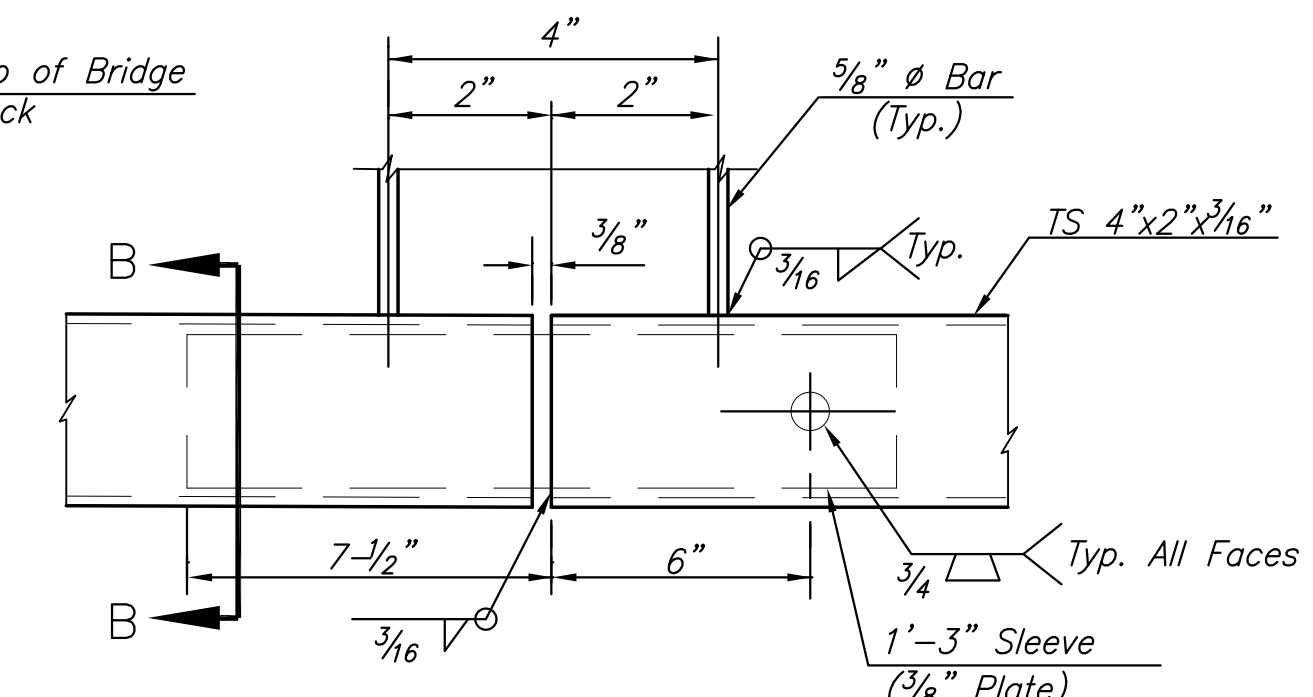
TYPICAL PANEL DETAIL



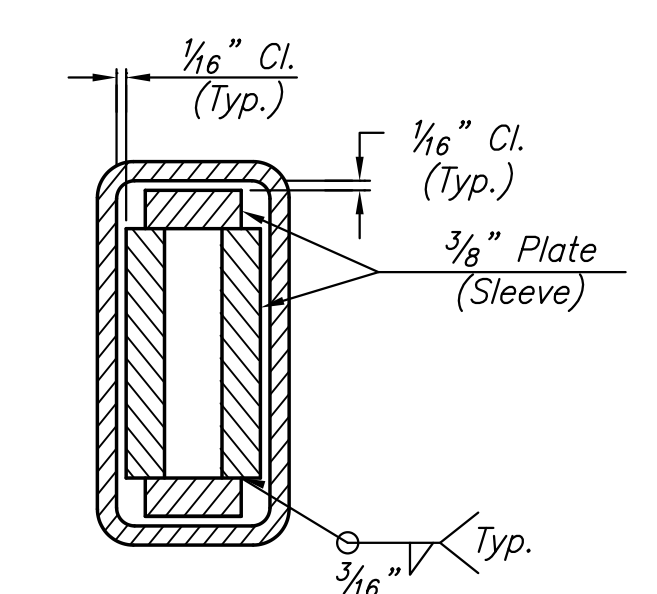
RAIL CONNECTION DETAIL



STUD BOLT DETAIL



SLEEVE DETAIL
 (Bottom Rail Shown, Top Rail Similar)



SECTION B-B

STREET IMPROVEMENTS FOR

127TH STREET EAST

FROM 13TH STREET NORTH TO 21ST STREET NORTH

©2017 MKEC Engineering All Rights Reserved www.mkec.com These drawings and their contents, including, but not limited to, all concepts, designs, & ideas are the exclusive property of MKEC Engineering (MKEC), and may not be used or reproduced in any way without the express consent of MKEC.

"HANDRAIL, PEDESTRIAN"

PROJECT NO.	472-85158	
DATE	11/29/17	
SCALE	NTS	
DESIGNED	DRAWN	CHECKED
JRA	LES	JRA
NO.	REVISION	DATE
SHEET NO.	96 OF 183	