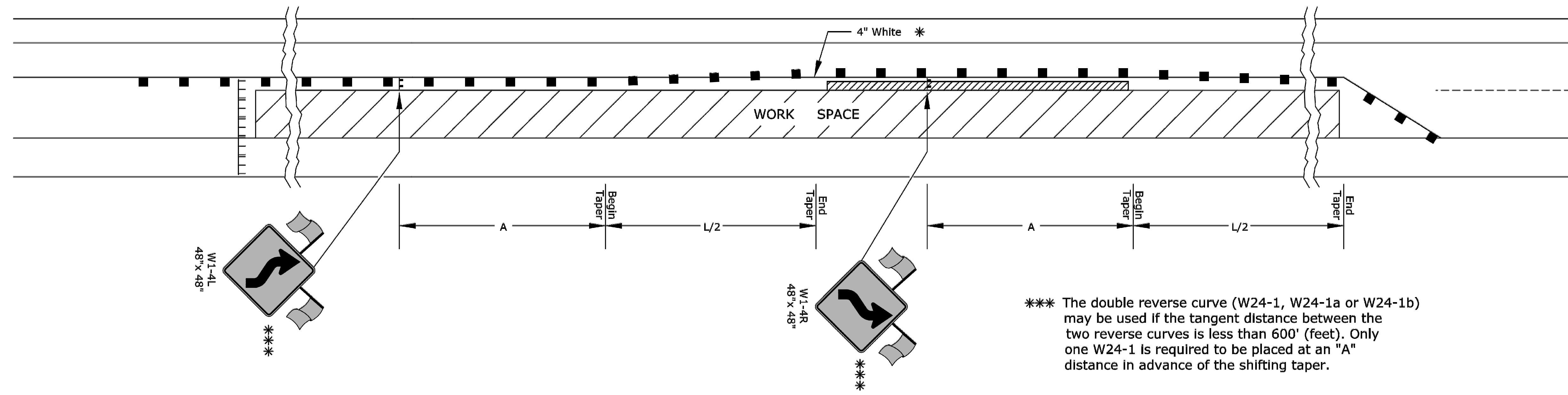
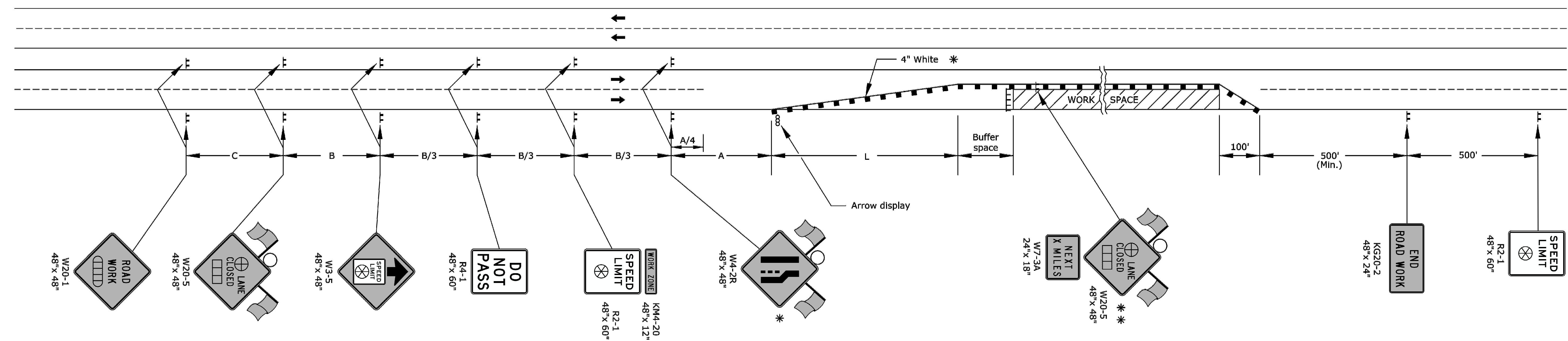


SHIFTING TAPER DETAIL

Add signs and devices as shown for work inside a closed lane that extends near to (or into) the open traffic lane.



*** The double reverse curve (W24-1, W24-1a or W24-1b) may be used if the tangent distance between the two reverse curves is less than 600' (feet). Only one W24-1 is required to be placed at an "A" distance in advance of the shifting taper.



- ▤ Type 3 barricades
- X Length to the nearest whole mile
- Channelizing device
- ▭ Ahead, 1500 ft, or 1 mile
- ▭ Ahead, 1000 ft, 1500 ft, or 1/2 mile
- ⊕ Right or left
- ⊗ Speed to be determined by the Engineer
- Type "A" low intensity warning light

- * For left lane closures use W4-2L and yellow edge line along channelizing devices.
- ** The W20-5 (⊕ Lane Closed) and W7-3A (Next X Miles) signs should be placed at 2 mile increments on a project of 4 miles or longer.

Left-side signs shall be omitted for a four-lane undivided highway.

One flagger should be stationed within each multi-lane roadway activity area where work is in a closed lane adjacent to traffic and not separated by a concrete safety barrier system.

3				
2				
1				
NO.	DATE	REVISIONS	BY	APP'D

KANSAS DEPARTMENT OF TRANSPORTATION

**TRAFFIC CONTROL
LANE CLOSURE ON MULTILANE HWY**

TE744

DESIGNED	B.A.H	DATE	06/01/15	APP'D	Kristina Ericksen
DESIGN CK.		DETAIL CK.		QUAN. CK.	

PLOTTED: Wednesday, November 29, 2017 @ 05:37PM
 J:\PROJECTS\2014\140\040280 - COM - 12TH E 13TH TO 21ST\05-CIVIL\CAD\TRAFFIC\TE744.DWG